



DREAM CRUISES

# GENTING DREAM

Top 10 Large Resort Ship



100%  
**FRESH**  
VENTILATION *air*



# GENTING DREAM

Here you'll find everything from world-class entertainment and fine dining to spas, bars, boutiques and bespoke experiences – delivered with our heartfelt Asian hospitality. You'll enjoy your favourite foods from around Asia, plus the best of international cuisine. All handpicked to inspire the greatest travel experience of your life.

## GENTING DREAM IN NUMBERS

Gross Tonnage: 150,695 tons

Length: 335m

Width: 40m

Decks: 18

Passenger Capacity: 3,352 (lower berth)

Staterooms: 1,674

Manufacturer: Meyer Werft, Germany

100% Fresh air ventilation system



## Top 10 Highlights



### 1 The Palace

Enter a world of exclusivity with spacious suites, luxurious facilities and European-style butler service.



### 2 The Lido

Enjoy sumptuous Asian and International dishes at a spacious dining setting.



### 3 Waterslide Park

Get drenched in fun on one of our six different waterslides.



### 4 Ropes Course & Zipline

Feel the thrill of gliding above the ocean on a 35-metre zipline.



### 5 Zodiac Theatre

Enjoy live production shows from the acclaimed entertainment team.



### 6 Bar City & Johnnie Walker House™

Enjoy world-renowned vintage and premium Scotch whisky at one of these exclusive settings.



### 7 Crystal Life Spa™

Rejuvenate mind, body and soul with our holistic spa experience.



### 8 The Dream Boutiques

Splurge on international luxury brands with our duty-free shopping.



### 9 Blue Lagoon

Savour sizzling Asian-style and mouth-watering international street hawker food.



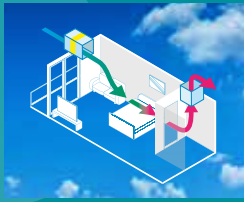
### 10 Little Dreamers Club

Offer exciting activities and classes to kids aged two to 12.



# Dream Cruises Cares, Cruise with Confidence

For more details on  
preventive measures



## 100% fresh air ventilation system No air re-circulation

Incoming air is filtered and a dedicated ventilation system redirects air out of the ship to ensure no re-circulation of air between cabins. Air intake and exhaust on opposite sides of the vessel.



## 100% Online Check-in Less Contact

All guests are required to complete check-in online, obtain their key cards from check-in kiosks and embark the ship in designated groups to avoid crowd congestion at the terminal.



## 360° Comprehensive Preventive Measures Enhanced Cleaning Process

Over 40 health and safety measures cover eight areas of the ship ranging from embarkation and disembarkation, cabins, public spaces, safe food and beverage handling procedures, recreational facilities, ventilation systems, medical services and crew safety.



## First Cruise Line to Receive DNV-GL Certification International Recognition

In July 2020, Dream Cruises' ship received the Certification in Infection Prevention for the Maritime Industry (CIP-M) from the world's leading classification society, DNV GL.

RESTAURANTS & BARS	Deck
Palm Court	19
Sun Deck Bar	17
The Lido*	16
Pool Deck Bar	16
Crystal Life Cuisine	15
Dream Dining Room Upper*	8
Hot Pot	8
Umi Uma	8
Seafood Grill by Mark Best	8
Prime Steakhouse by Mark Best	8
Gelateria	8
Bar City	8
Johnnie Walker House	
Penfolds Wine Vault	
Bubbles Champagne Bar	
Humidor Cigar Lounge	
Mixt Cocktail Bar	
Dream Dining Room Lower*	7
Blue Lagoon	7
Red Lion	7
Bar 360	6
Lobby Café	6
Silk Road	6

TEENAGERS & CHILDREN	Deck
Little Dreamers Club	16
Arcade	16,6

SPORTS & RECREATION	Deck
Waterslide Park	20
SportsPlex	19
Mini-Golf	18
Rock Climbing Wall	18
Ropes Course	18
Sun Deck	17
Jogging Track	17
Main Pool Deck	16
Kids Water Park	16
Boardwalk	8

BEAUTY & WELLNESS	Deck
Crystal Life Fitness	15
Crystal Life Spa	15
Le Salon	15
The Gentlemen's Barber	15
Crystal Life Asian Spa	5

THE PALACE	Deck
Palace Pool Side Café	18
Palace Pool & Sun Deck	18
Palace Gymnasium and Studio	18
Palace Spa	18
Palace Restaurant	17
Palace Lounge	17
Palace Reception	17

GENTING CLUB	Deck
Club	16
Lounge	16

ENTERTAINMENT	Deck
Zouk Private Party Deck	18
Zouk Beach Club	17
Zouk	17
Resorts World At Sea	8,7,6
Zodiac Theatre	7
Karaoke	6
International Room	6
Premium Room	6

RETAIL	Deck
Art Gallery	8
The Dream Boutiques	7,6
Souvenir Mart	6
Photo Gallery	6

OTHER SERVICES	Deck
Business Centre	19
Bridge Viewing Room	15
Helipad Embarkation Lounge	9
Function 8 – Multi-purpose Venue	8
Tributes	8
Executive Boardrooms	7
Reception	6
Shore Excursions	6
Cruise Consultant	6
Clinic	5
Meeting Rooms	5

\*Inclusive restaurant  
Operation hours may vary with itineraries,  
please refer to announcement onboard.

# Staterooms

## PALACE VILLA



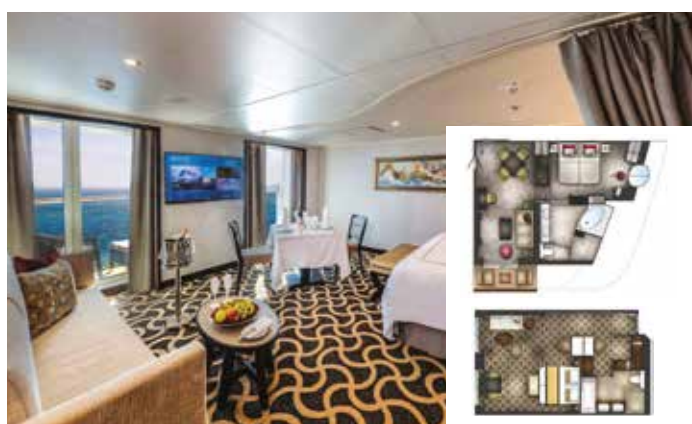
Approx. 224 sq.m | Max Occupancy 6 | Deck 17  
1 King-size Bed + 1 Queen-size Bed + 1 Double Sofa Bed

## PALACE PENTHOUSE



Approx. 37/56 sq.m | Max Occupancy 4-6\* | Deck 13/16  
1 King Size Bed + 1 Double Sofa Bed/ 1 King Size Bed + 2 Double Sofa Beds

## PALACE DELUXE SUITE



From 41 sq.m | Max Occupancy 4 | Deck 9/10/11/12/13/15  
1 Queen-size Bed + 1 Double Sofa Bed

## PALACE SUITE



From 37 sq.m  
Max Occupancy 4 | Deck 13/15/16/17  
1 Queen-size Bed + 1 Double Sofa Bed

## BALCONY DELUXE STATEROOM



From 22 sq.m  
Max Occupancy 3 – 4  
Deck 8/9/10/11/12/13/15  
1 Queen-size Bed + 1 Single Sofa Bed/  
1 Double Sofa Bed/ 1 Single Sofa Bed +  
1 Ceiling Pullman Bed

## BALCONY STATEROOM



From 20 sq.m  
Max Occupancy 3 – 4  
Deck 8/9/10/11/12/13/15  
1 Queen-size Bed + 1 Single Sofa Bed/  
1 Single Sofa Bed +  
1 Ceiling Pullman Bed

## OCEANVIEW STATEROOM



From 16 sq.m  
Max Occupancy 2 – 4  
Deck 5/9/10/11/12/13  
2 Single Beds + 1 Double Sofa Bed/  
2 Single Beds + 1 Single Sofa Bed

## INTERIOR STATEROOM



From 13 sq.m  
Max Occupancy 2 – 4^  
Deck 5/8/9/10/11/12/13/15  
2 Single Beds/ 2 Single Beds +  
1 Ceiling Pullman Bed/  
1 Single Bed + 1 Pullman Bed +  
1 Double Sofa Bed

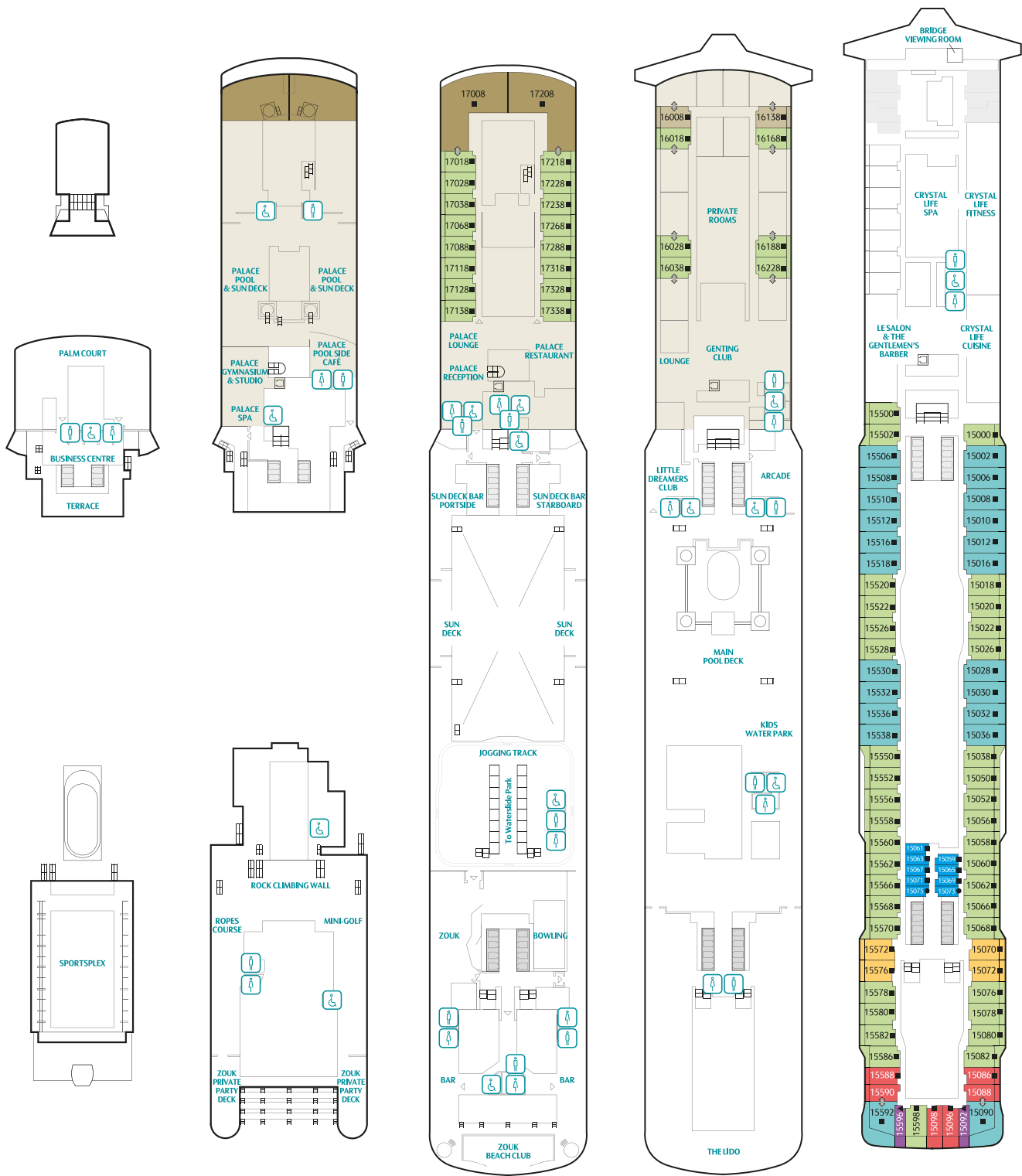
\*The maximum occupancy of designated Palace Penthouse can be up to 6 guests upon request, subject to stateroom availability.

^The above image is for a stateroom configuration for 2 persons – other stateroom configurations for 3 persons and 4 persons are also available.

# Genting Dream Deck Plans

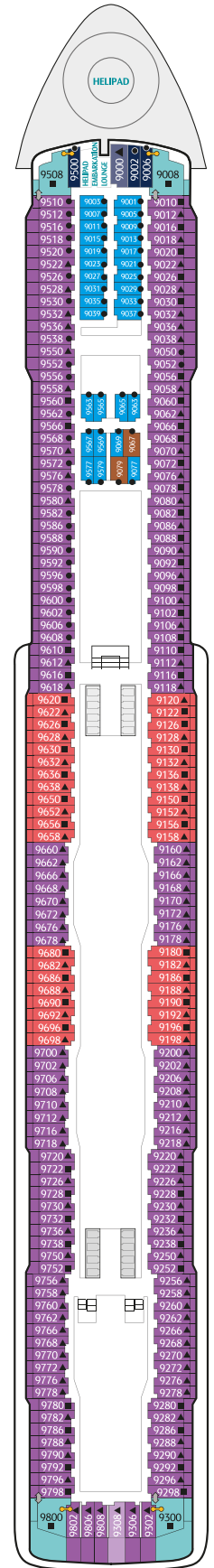
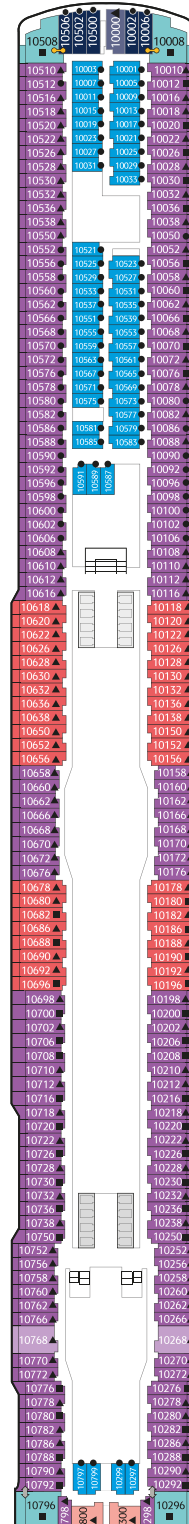
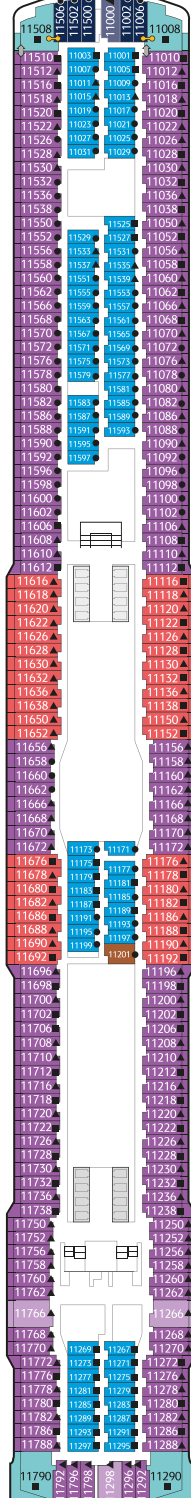
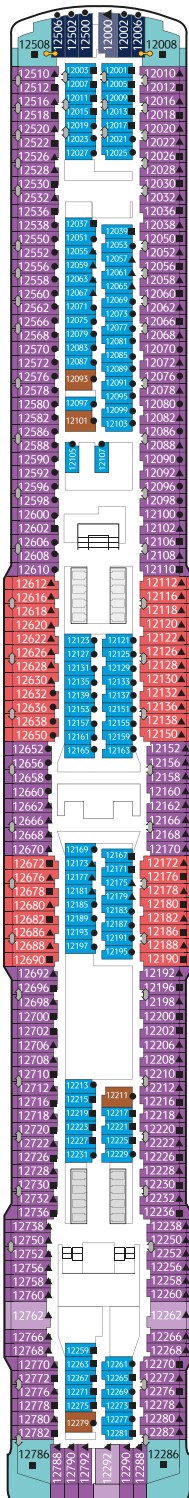
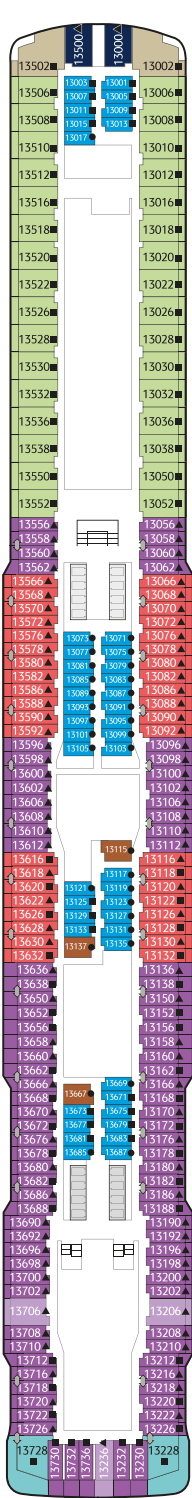
## CATEGORIES

- Palace Villa
- Palace Penthouse
- Palace Deluxe Suite
- Palace Suite
- Palace Suite (Accessible)





- Balcony Deluxe Stateroom
- Balcony Deluxe Stateroom(Accessible)
- Balcony Stateroom
- Balcony Stateroom (Accessible)
- Oceanview Stateroom
- Oceanview Stateroom (Accessible)
- Interior Stateroom
- Interior Stateroom (Accessible)
- Up to two persons occupancy available
- Third person occupancy available
- Up to four persons occupancy available
- Connecting stateroom
- Adjoining Stateroom



### DECK 13

Suites, Balcony Deluxe, Balcony, Oceanview & Interior Staterooms

### DECK 12

Suites, Balcony Deluxe, Balcony, Oceanview & Interior Staterooms

### DECK 11

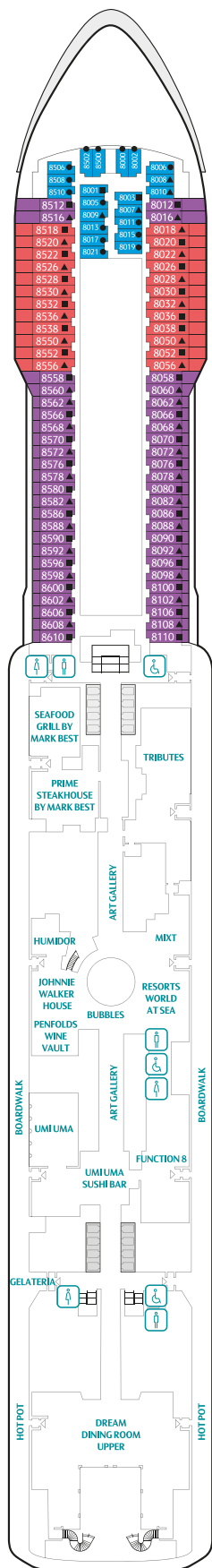
Suites, Balcony Deluxe, Balcony, Oceanview & Interior Staterooms

### DECK 10

Suites, Balcony Deluxe, Balcony, Oceanview & Interior Staterooms

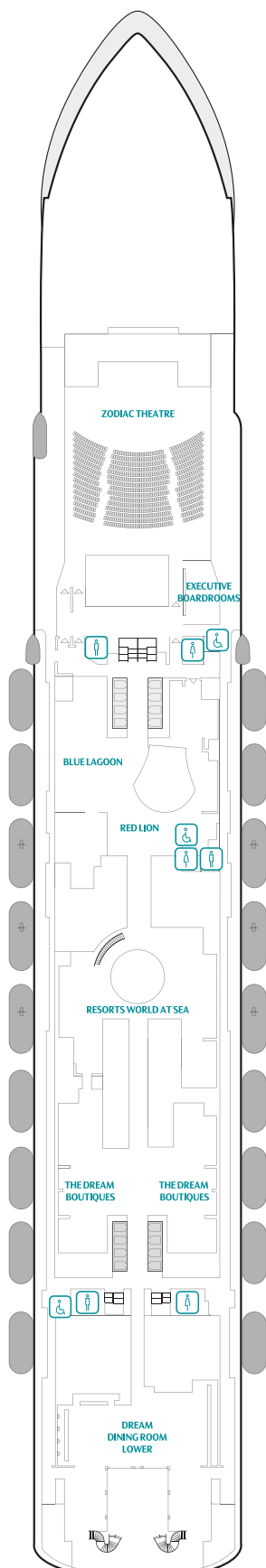
### DECK 9

Suites, Balcony Deluxe, Balcony, Oceanview & Interior Staterooms, Helipad



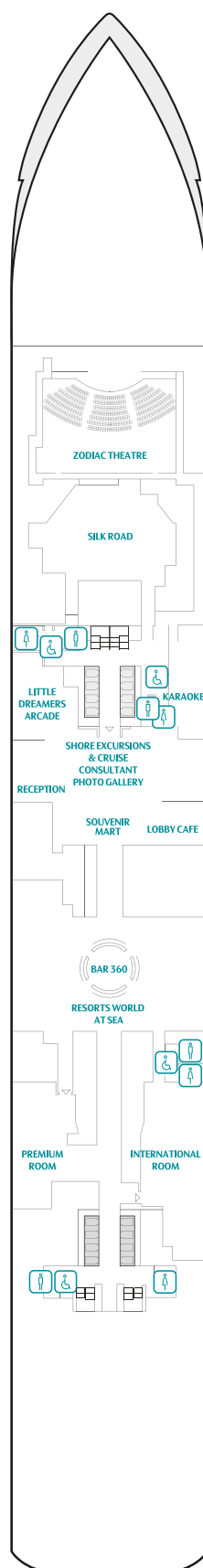
#### DECK 8

Restaurants, Bars, Lounges & Multi-purpose Venue, Balcony Deluxe, Balcony & Interior Staterooms



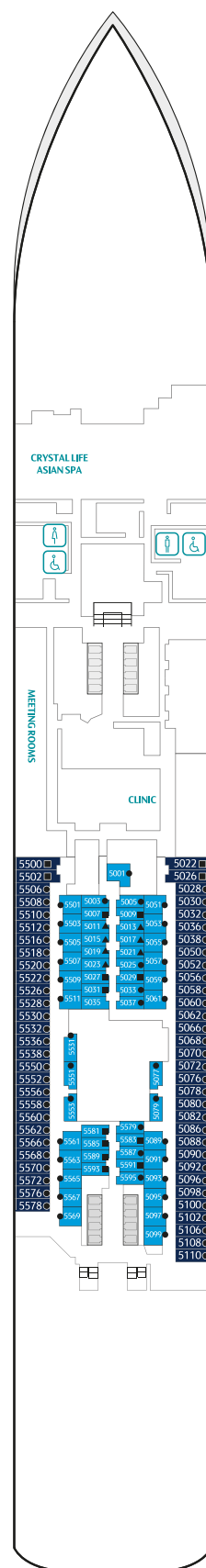
#### DECK 7

Main Theatre, Executive Boardrooms, Restaurants, Retail Venues & Entertainment Venues



#### DECK 6

Main Lobby, Reception, Restaurant, Café, Lounges & Entertainment Venues



#### DECK 5

Asian Spa, Oceanview & Interior Staterooms



The Palace is in a class of its own – our "luxury ship-within-a-ship" concept with over 140 suites and private VIP facilities, including its own swimming pool, spa, gym and dining venues. The luxurious essence of The Palace is embodied by the meticulous personalised services of its dedicated team of Dream Butlers, chosen for their gracious attitude, incomparable level of hospitality and unparalleled expertise.

## THE PALACE



Complimentary dining



Exclusive facilities



European-style butler service



Over 140 luxury suites

## Meet the Dream Fleet

Since its debut in 2016, Dream Cruises has been breaking new ground in the cruise industry with a family of award-winning and critically acclaimed, premium cruise ships providing guests with inspirational journeys at sea that are truly Asian at heart and international in spirit. Purpose-built for the Asian market, every Dream Cruises vessel is a standard bearer of German built quality, legendary Asian service and hospitality and uncompromising North European safety standards. Genting Dream and her sister ship World Dream have garnered both popular and critical renown since their debut in 2016 and 2017, respectively, and are currently the only two Top 10 ranked Large Resort Ships operating in the region\*. Sailing outside of Asian waters for the first time in brand history, Dream Cruises latest addition, Explorer Dream, is a pathfinder for the brand with her inaugural voyages around Australia and New Zealand in 2019. The upcoming debut of Global Dream in 2022 will further raise the bar through the brand's most advanced mega ships ever, heralding a new chapter in the future of cruising with a state-of-the-art, 208,000 gross ton, next generation vessels incorporating cutting-edge technology, innovative features and facilities to service up to 9,000+ guests.

## Your First Choice for CruiseSafe

As the pioneer in the Asian cruise industry, Genting Cruise Lines is reshaping the concept of cruising to inspire confidence with enhanced preventive measures for its fleet created through exhaustive consultations and first-hand experience and that have been recognized and certified by international governments and expert authorities. Additional flexible and convenient booking options featuring easy and hassle-free cancellation and cruise credit solutions deliver additional peace of mind for guests.



To start your Dream vacation, please contact your preferred travel agent, visit us at [dreamcruiseline.com](http://dreamcruiseline.com) or call us:



Scan for contact information

\* Berlitz Cruising and Cruise Guide 2018-2020

Information is correct at time of printing. Dream Cruises reserves the right to cancel and/or substitute any information or any scheduled port of call/itinerary/price/programme at any time and for any reason whatsoever without notice.

© Copyright 2021 by Dream Cruises. All rights reserved. No part of this brochure may be reproduced or used in any means – graphics, electronic or event ideas, including but not limited to photocopying, recording, taping or information from storage and retrieval systems without prior written permission from Dream Cruises. Images are for reference only. Ver.5.0

A MEMBER OF  
**GENTING CRUISE LINES**