

# ASIA & OCEANIA COLLECTION

WINTER CRUISES 2017 - 2018





# EDITO



# Fragrances of Asia and lands of Oceania

For the Winter 2017-2018 season, PONANT invites you to discover new cruises, taking in *Millennial Asia and Oceania*.

Itineraries full of the history of Japan, former trading counters with evocative names in Vietnam, sumptuous landscapes in Indonesia, Khmer jewels and sacred temples in Cambodia, or the vast plain with its 2,000 pagodas in Myanmar, for travellers in quest of dreams and mystery, Asia is still the promised land.

Authentic, captivating, welcoming – you will sail aboard *L'Austral* to discover Asia's many facets.

If you choose the Polynesian atolls, *Le Boréal* will take you to the shores of Bora Bora, Tahiti or the Marquesa Islands – exotically perfumed archipelagos, swaying to the gentle breeze of the Trade Winds.

Further to the East, the *Island Continent* will offer you the unforgettable experience of some of the last pristine Australian expanses with its remote lands and mosaics of colors, mineral and wild.

As you sail from port to port, let yourself fall under the spell of the subtle alchemy that characterises PONANT's *great journeys*, a delicate blend of authenticity, luxury and the discovery of sublime destinations...

*See you on board very soon.*





# SUMMARY

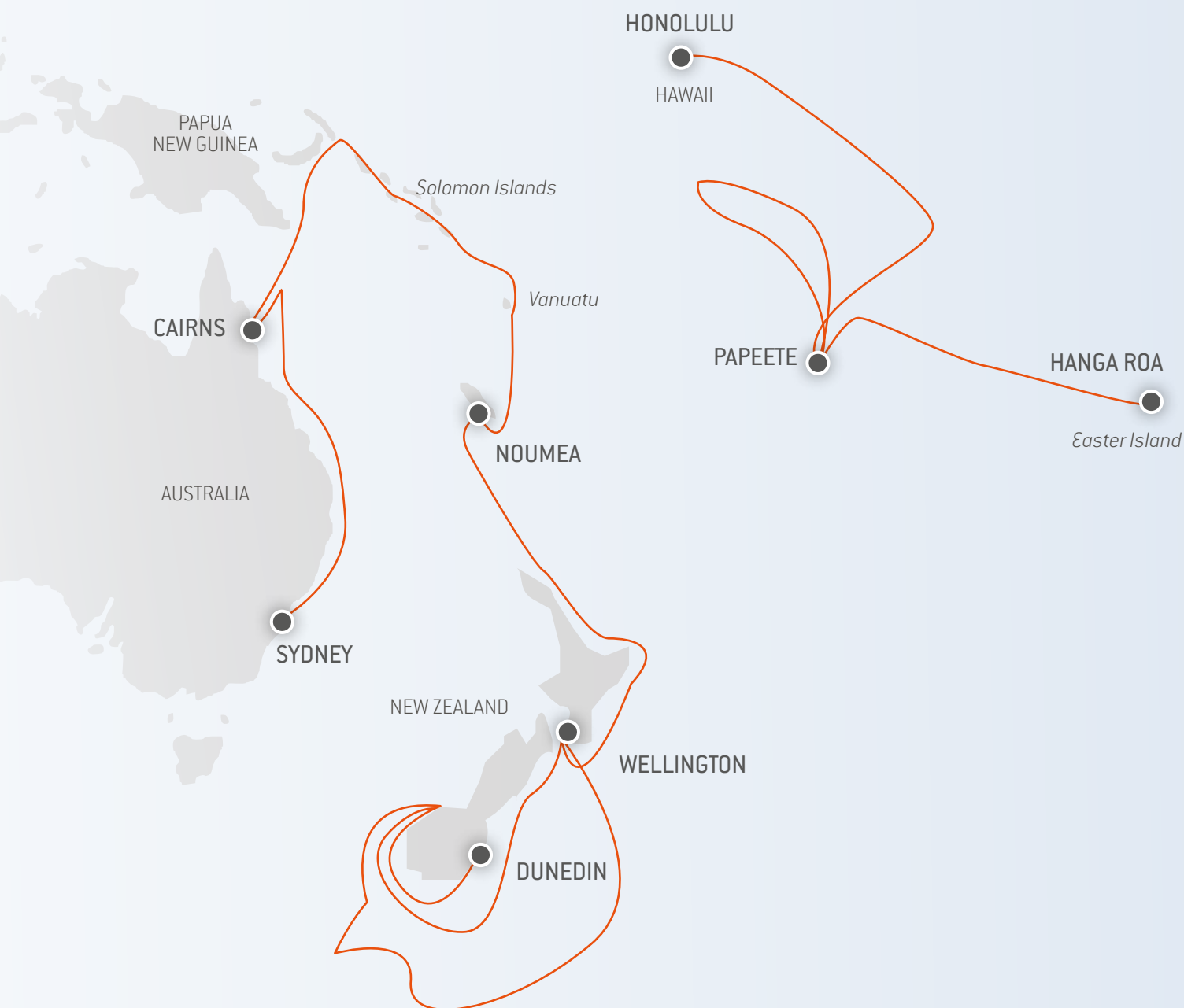
---

YOUR CRUISES.....	6
WHY TRAVEL WITH PONANT? .....	8
THE MUST-SEE SITES IN ASIA.....	10
THE MUST-SEE SITES IN POLYNESIA AND OCEANIA.....	12
TROPICAL EXPEDITION.....	14
ITINERARIES.....	18
DESTINATION HIGHLIGHTS .....	46
PRE & POST CRUISES PROGRAMMES .....	50
FORMALITIES.....	54
LE BORÉAL & L'AUSTRAL.....	56
STATEROOMS & DECKS .....	60
GENERAL IMPORTANT INFORMATION.....	62
INSURANCE.....	67



## YOUR CRUISES IN ASIA

DATE	SHIP	ITINERARY	NIGHTS	PAGE
October 28 <sup>th</sup> , 2017	<i>L'Austral</i>	Ho Chi Minh • Yangon	12	FROM VIETNAM TO MYANMAR..... p24
November 09 <sup>th</sup> , 2017	<i>L'Austral</i>	Yangon • Bali	15	ISLANDS OF INDONESIA..... p26
November 24 <sup>th</sup> , 2017	<i>L'Austral</i>	Bali • Cairns	14	FROM INDONESIA TO AUSTRALIA ..... p28
March 15 <sup>th</sup> , 2018	<i>L'Austral</i>	Cairns • Manila	16	FROM AUSTRALIA TO THE PHILIPPINES ..... p38
March 31 <sup>st</sup> , 2018	<i>L'Austral</i>	Manila • Kobe	9	ISLANDS OF SOUTHERN JAPAN ..... p40
April 25 <sup>th</sup> , 2018	<i>L'Austral</i>	Osaka • Maizuru	8	THE BEST OF JAPAN ..... p42
May 03 <sup>rd</sup> , 2018	<i>L'Austral</i>	Maizuru • Osaka	8	THE BEST OF JAPAN ..... p42
May 18 <sup>th</sup> , 2018	<i>L'Austral</i>	Osaka • Osaka	7	TRADITIONS OF JAPAN..... p44



## YOUR CRUISES IN OCEANIA

DATE	SHIP	ITINERARY	NIGHTS	PAGE
October 05 <sup>th</sup> , 2017	<i>Le Boréal</i>	Honolulu • Papeete	15	HAWAII AND FRENCH POLYNESIA ..... p18
October 20 <sup>th</sup> , 2017	<i>Le Boréal</i>	Papeete • Papeete	7	TREASURES OF POLYNESIA..... p20
October 27 <sup>th</sup> , 2017	<i>Le Boréal</i>	Papeete • Hanga Roa	13	POLYNESIA AND EASTER ISLAND ..... p22
December 08 <sup>th</sup> , 2017	<i>L'Austral</i>	Cairns • Noumea	15	IN THE HEART OF THE PACIFIC ..... p30
December 23 <sup>rd</sup> , 2017	<i>L'Austral</i>	Noumea • Dunedin	13	THE BEST OF NEW ZEALAND..... p32
January 05 <sup>th</sup> , 2018	<i>L'Austral</i>	Dunedin • Wellington	16	SUBANTARCTIC ISLANDS ..... p34
March 06 <sup>th</sup> , 2018	<i>L'Austral</i>	Sydney • Cairns	9	AUSTRALIAN GETAWAY..... p36









# WHY TRAVEL with PONANT IN ASIA AND OCEANIA?

Is your dream to travel differently, moving from destination to destination and country to country without having to pack and unpack your suitcase each time? PONANT is giving you the opportunity to travel to centuries-old Asia or to discover the islands of the Pacific and Oceania.

And because cruising doesn't mean just seeing the coastline and brushing against the shores of a distant land, we are offering you a different perspective thanks to our programmes of shore excursions that are rich in culture and sensations. Our carefully selected ports of call and extensions will have you visiting the must-see sites of these faraway lands.

As a privileged passenger, whichever itinerary you choose, set sail aboard *L'Austral* or *Le Boréal* and discover the major sites of this part of the world.



## "PONANT" STYLE IN ASIA

- **8** cruises that cross **5** countries in Asia.
- **16** stops at UNESCO World Heritage Sites.
- "Expedition" voyages for certain destinations.
- Zodiac® outings and shore visits to get as close as possible to nature.
- Discovery of an authentic culture, of an Asian continent with a thousand faces.
- For many of the destinations, consecutive cruises options are available (please contact us).
- "Clean ship" certified ships that are respectful of the environment in the heart of Asia's islands, nature reserves and archipelagos.
- 5\* yacht cruises aboard ultra-modern ships combining elegance, luxury and cutting-edge technology.
- On all cruises, a team of lecturers and/or naturalist selected for their areas of expertise.



## "PONANT" STYLE IN OCEANIA

- **7** cruises that cross numerous archipelagos in Polynesia and Oceania.
- **14** stops at UNESCO World Heritage Sites.
- "Expedition" voyages for certain destinations.
- Zodiac® outings and shore visits to get as close as possible to nature.
- Possibility of snorkelling in the heart of crystal-clear lagoons.
- For many of the destinations, consecutive cruises options are available (please contact us).
- "Clean ship" certified ships that are respectful of the environment in the heart of Oceania's islands, nature reserves and archipelagos.
- 5\* yacht cruises aboard ultra-modern ships combining elegance, luxury and cutting-edge technology.
- On all cruises, a team of lecturers and/or naturalists selected for their areas of expertise.

# THE MUST-SEE SITES IN ASIA



UNESCO

## THE BAGAN PLAINS in Burma (Myanmar)

Bagan was founded nearly one thousand years ago by the first king of the Burmese Empire and for a long time it was the capital of a kingdom that rivalled that of Angkor in Cambodia. A majestic archaeological site with a magical feel, these Burma's finest jewels is reason enough to travel to the country of pagodas and golden roofs. With over 2,800 Buddhist monuments, the oldest of which date back to the 10<sup>th</sup> century, the Bagan plains stretch out as far as the eye can see along the Irrawaddy River, where the fragile silhouettes of hundreds of temples and pagodas seem to be reaching for the sky. This invaluable site, listed with UNESCO, is sure to be the highlight of your visit once the Shwezigon Pagoda and the great Ananda Temple have revealed to you their secrets. In the fading light of day, you will be captivated by the magic of the moment when the thousand slender stupas emerge from a powdery haze as the sun slowly sets on the horizon.

In pre & post cruise from Yangon: Ho Chi Minh • Yangon - page 24  
Yangon • Bali - page 26

UNESCO

## BABA NYONYA CULTURE in Malaysia

Lying along the shores of the eponymous Strait, Malacca City has been listed as a UNESCO World Heritage Site. A witness of the maritime traffic between Asia and the West, the city is inextricably linked to the trade of spices and silk. This cultural oasis will show you the history of a fascinating ancient civilisation, the Baba Nyonya. Also known as Peranakan, which means "people born here" in Malay, these people are the descendants of Chinese immigrants who married Malay women and whose culture offers a superb example of the blending of traditions. In a Peranakan house in Chinatown, you will discover the Baba Nyonya Heritage Museum, which reproduces the interior of a traditional elegant home from the 19<sup>th</sup> century. The Baba Nyonya were wealthy traders who liked to indulge their taste for sumptuous furniture made from teak and mother-of-pearl, rare jewels and silk brocade.

From Malacca : Ho Chi Minh • Yangon - page 24



UNESCO

## MOUNT BROMO in Indonesia

On the island of Java, there is a lunar landscape of gigantic proportions and surreal beauty, the Gunung Bromo, one of the most fantastic sites in the country. Rising from the depths of the ancient Tengger caldera, Mount Bromo is one of three volcanoes that emerged from a crater measuring some 10 km in diameter. For the Hindu Tenggers, this is the home of benevolent gods who fertilise crops and offer abundant harvests three times a year. During this visit, you can discover the Tengger caldera, a vast desert of varying shades of brown. The splendour of this site and the intensity of the light make it unique in the world. Do not miss this unusual excursion to some majestic landscapes.

From Probolinggo : Yangon • Bali - page 26







UNESCO

## THE MIYAJIMA SANCTUARY in Japan

When your ship calls in Hiroshima, we invite you to take a local ferry to a small island paradise, Miyajima, the island where people and gods live together. The entrance to this sanctuary is jealously guarded by a magnificent vermillion Torii that stands proudly facing the tides. It is said that from the sea its silhouette resembles that of a bird taking flight. This magnificent construction seems to float on the water's surface, as light as a feather. This place hides the most precious of Shinto treasures, the Itsukushima Shrine, which dates back to the 12<sup>th</sup> century and has been harmoniously renovated. The panorama combining natural landscape and human creation perfectly illustrates the Japanese conception of beauty. The serenity in this sacred and unique site listed with UNESCO will leave you spellbound.

From Hiroshima : Manila • Kobe - page 40  
Osaka • Maizuru & Maizuru • Osaka - page 42  
Osaka • Osaka - page 44



UNESCO

## THE TEMPLES OF ANGKOR in Cambodia

The mysterious Angkor complex, an edifying sanctuary dating back to the former Khmer Empire, encompasses the country's most beautiful temples. Built between the 12<sup>th</sup> and 13<sup>th</sup> centuries and stretching out over some 400 km<sup>2</sup>, the majestic stone silhouettes that emerge from a décor of tropical rainforest give magical power to this place. Discover the magnificent Angkor Wat, home to a few monks with frail silhouettes wearing saffron robes. In the heart of the city of Angkor Thom, you will find the most mysterious of the "temple-mountains": the Bayon, with its 54 gothic towers decorated with 216 faces all sporting an enigmatic grin, a symbol of the power and authority of this former empire. Lastly, do not miss the "citadel of the women", Banteay Srei, considered to be the "jewel of Khmer art" dedicated to Shiva. It is carved from pinkish stone, with finely chiselled sculptures.

In pre cruise : Ho Chi Minh • Yangon - page 24



## HO CHI MINH in Vietnam

A gracious country whose silhouette forms the shape of a dragon, Vietnam remains unspoiled and continues to appeal to travellers in search of authenticity. From the pagodas and temples that embody Vietnam's timeless nature to the elegant buildings from the French period, each of the city's facets reveals an identity that has provided Marguerite Duras with legendary inspiration for her novels. With its fragrant stalls and floating markets, the former Saigon gives the impression of a lively metropolis. Do not miss your chance to discover its streets along which ride young girls on bicycles, wearing the traditional tunic. Not far from there, to the city's East, you will experience the Saigon River and its ceaseless ballet of fragile-looking skiffs transporting heavy loads of rice, plants and flowers.

From Ho Chi Minh : Ho Chi Minh • Yangon - page 24

# THE MUST-SEE SITES IN POLYNESIA & OCEANIA



## THE MARQUESAS ISLANDS in Polynesia

*"On these islands where the solitude is total, I found a kind of inner peace,"* wrote Jacques Brel. The singer-songwriter from Brussels sang about the Marquesas Islands and the painter Paul Gauguin was inspired by them. These islands stand like dark green fortresses surrounded by the indigo blue of the Pacific. Here, you will find neither lagoons nor reefs. The archipelago's charm lies in its wild beauty and each island of *"the Land of Men"* is more majestic than the next. In the heart of the dense and lush forests of Nuku Hiva, droplets from the waterfalls dive off the vertiginous cliffs. As for the islands of Hiva Oa and Fatu Hiva, they still hide mysterious ancient petroglyphs and the vestiges of marae – temples which served both a religious and a political purpose. Renowned for their crafts, the Marquesans sculpt wood, stone and bone, but they also distinguish themselves through their mastery of the complex art of tattooing.

Honolulu • Papeete - page 18

## THE VANUATU ARCHIPELAGO in the Coral Sea

Imagine a small, independent country in the middle of Oceania, between Australia, Fiji and New Caledonia. Once called the New Hebrides, the Vanuatu Islands offer an extraordinary variety of landscapes, including active volcanoes, diving sites and transparent lagoons. Gem of the Pacific Ocean, the Vanuatu archipelago offers an idyllic setting for anyone seeking adventure or a change of scenery and it's a country with a rich cultural heritage, making it a paradise for ethnologists. In addition to the long golden beaches that stretch out along its coastlines and its tropical rainforests, this archipelago is also known for its high volcanic activity. The sea bed is particularly rich here, with 300 varieties of coral and over 450 species of fish, including some endemic.

Cairns • Noumea - page 30



## MEET TRADITIONAL TRIBES

A cruise in Oceania is a chance to take in spectacular landscapes, but it is also the occasion for discovering the ancient rituals of people living on the land of their ancestors. Your cruise aboard *L'Austral* will take you far from the busiest tourist routes to meet these people from the other side of the world. Famous for their primitive ways and their ancestral customs, these ancient Papuan, Aboriginal and Maori tribes all have different rites and traditions, and their geographical positioning all differ too. You will be both surprised and moved by the cheerfulness and open-mindedness of these locals who will welcome you with traditional dancing, singing and laughter. You will also discover some examples of local traditional art: woven baskets or carved objects.

Cairns • Noumea - page 30

Noumea • Dunedin - page 32

Cairns • Manila - page 38





## PAPUA NEW GUINEA

Travelling to Papua New Guinea means leaving the beaten track and discovering a rich and still little-known culture. A land at the end of the earth, this country brings a number of islands, mostly containing active volcanoes, in the heart of Oceania. To the heart of raw nature, the destination is wild and captivating and boasts one of the richest endemic ecosystems in the world. Whether you are a diver, hiker, or have the soul of an explorer in search of spirituality, a cruise to Papua New Guinea is undoubtedly the promise of discovering a mysterious and remote land. During your Zodiac® expeditions, discover the country's primitive people who live in perfect symbiosis with unspoiled nature in the heart of an outstanding ethnic mosaic.

Cairns • Noumea - page 30



UNESCO

## THE MILFORD SOUND in New Zealand

The Milford Sound, or "Piopiotahi" in Maori, is an ancient glacial valley flowing directly into the Tasman Sea. It offers an extraordinary, rugged landscape of steep mountains, calm and deep waters, and sheer cliffs with peaks stretching upwards to touch the sky. The fjord is a world famous natural wonder listed as a UNESCO World Heritage Site. It is home to a rich and unique marine flora, including magnificent black coral reefs. *L'Austral* will take you to the foot of its mountain slopes, to which clings lush vegetation. From a comfortable spot on one of the outside decks, do not miss the spectacular Mitre Peak, whose slender silhouette stands 1,692 m tall, towering over the blue waters. It's a fascinating sight.

Noumea • Dunedin - page 32



## CORAL GARDENS in Australia

Ensconced on the outer decks of your ship as she sails in the crystal waters that line the Australian coast, you will have a commanding view of the seabed and the picture-postcard beaches of these remote islands. Whether they are named Percy, Fraser, Lady Elliot or Lizard, all the islands that edge the North-East coast of Australia offer pristine landscapes of fascinating beauty. The biodiversity of the sea life here is of inestimable value and is the object of special protection measures. Veritable sanctuaries for more than 1,200 species of marine wildlife, here the term of "coral garden" really takes on its full meaning. Do not miss the chance to discover this protected ecosystem, which is world-renowned for its diving, between neon tetras, clown fish, parrot fish, sponges and other crustaceans.

Sydney • Cairns - page 36

# TROPICAL EXPEDITION

The PONANT way

**When you choose a PONANT “Expedition” voyage,  
you are choosing comfort, refinement and discovery.**

At PONANT, we create for our passengers innovative itineraries, as close as possible to nature, wildlife and flora. Irrespective of the destination, from the distant Japanese archipelago to the peaceful Indonesian shores, the remote lagoons of the Pacific or the jungles of Borneo, PONANT takes you off the beaten track, far from regular maritime routes. Experience the unique opportunity of a true “Expedition” voyage, in an atmosphere of relaxed elegance and comfort.







## UNIQUE ENCOUNTERS

Sailing to remote and seldom visited destinations allows you to experience spectacular landscapes, and an endemic fauna. From Papua New Guinea to Solomon Islands, and from the Vanuatu to the little villages of New Zealand, it also provides opportunities to discover the ancient customs of many tribes and ethnic groups that proudly continue their rituals on the land of their forefathers. During your Expedition voyage, you will gain an understanding of their tradition and cultures. When visiting their villages take time to interact with these warm and friendly people.



## SHORE VISITS IN A ZODIAC®

Each day, shore visits in Zodiac® landing crafts are organised to take you as close as possible to the fauna and flora of the regions visited. Our Zodiac® are designed to accommodate small groups of 10 passengers. They are easy to step on to from the marina platform at the rear of your ship and they enable fast and safe landings. Our Zodiac® excursions are one-of-a-kind, unforgettable experiences, whether you are landing on a deserted cove in the Maluku islands, observing a colony of tortoises on a sandy beach, or discovering the mangroves of Australia or the magical New-Zealand fjords.



## AN EXPERIENCED EXPEDITION TEAM

Travelling with renowned anthropologists, marine biologists, historians, botanists, geologists, naturalists and ornithologists, enables you to gain a greater understanding and appreciation of the destinations to create a rewarding and memorable experience. Your Expedition team have been selected for their knowledge and expertise to enhance your experience both on board and in the field, providing fascinating lectures and valuable insight into the culture, history and wildlife of the region. Accompanying you throughout your voyage they are ideal companions for a journey of discovery.

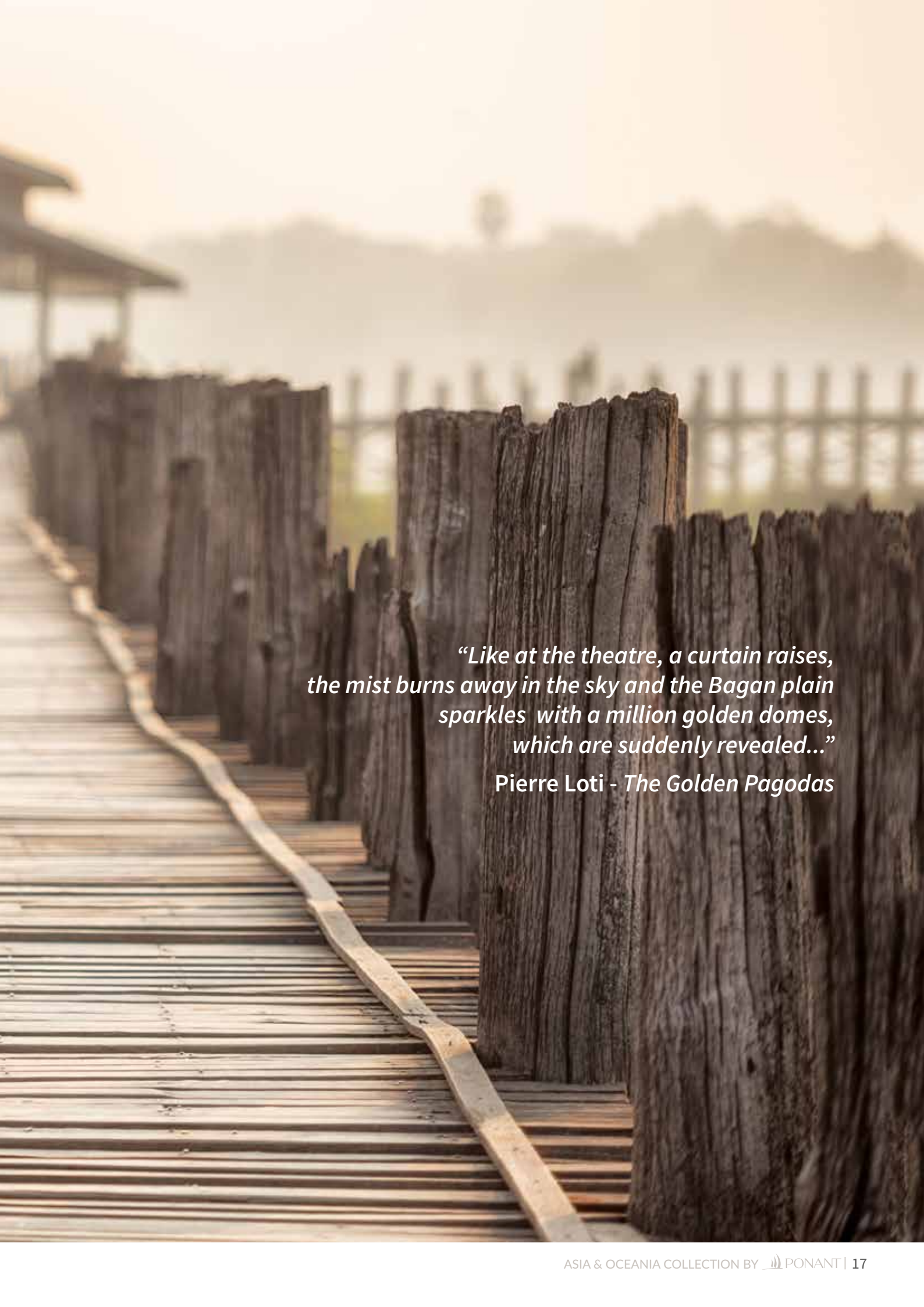


## IDYLIC INTERLUDES ON PRISTINE ISLETS

Our tropical expeditions in Oceania offer travellers privileged moments, another way of discover the islands that emerge from the surface of the ocean – rather like Robinson Crusoe. With long white sandy beaches and the translucent waters of sun-kissed seas, disembarking at the heart of lagoons or along the palm-tree lined shores is an invitation from PONANT to relax, to bathe in the waters or observe the underwater world, for those who dream of swimming alongside elegant Manta rays and picturesque clown fish. During these nature-filled escapades, let a feeling of well-being wash over you on these idyllic beaches, which have become a refuge for species of marine birds.





A photograph of a wooden walkway or boardwalk made of horizontal planks, leading from the bottom left towards the center. To the right of the walkway is a rustic fence made of vertical wooden posts. The background is a soft-focus landscape with a misty sky and several pagodas visible in the distance. The lighting is warm and golden, suggesting sunrise or sunset.

*“Like at the theatre, a curtain raises,  
the mist burns away in the sky and the Bagan plain  
sparkles with a million golden domes,  
which are suddenly revealed...”*

*Pierre Loti - The Golden Pagodas*

# HAWAII & FRENCH POLYNESIA

*Set sail aboard Le Boréal to discover the islands of the Pacific. From exuberant Hawaii, your cruise will take you to the fascinating Marquesas Islands, a place of wild and powerful beauty. Then, between coral and coconut trees, you will cruise toward the stunning turquoise lagoons of Polynesia's islands to reach Papeete.*



UNESCO

## HAWAII

Discover Honolulu, capital of the Hawaiian Islands, which will reveal the Waikiki coast to you. Under the benevolent gaze of the Diamond Head crater, discover lush vegetation in the heart of the tropical rainforests, interspersed with waterfalls and sumptuous gardens of orchids. Then, *Le Boréal* will call at Hilo, whose emerald landscape is undoubtedly one of the finest illustrations of the islands' volcanic heritage. Here, visit the Volcanoes National Park, the only site in Hawaii currently listed as a UNESCO World Heritage Site and admire the lava fields and tubes, as you get as close as possible to the majestic and still- active cones.

## ATUONA - HIVA OA

You'll immediately understand why this remote and unusual chain of islands bathing in the crystal-clear waters of the Pacific Ocean inspired Jacques Brel's final album. During your cruise, we will stop at Hiva Oa, considered to be the "garden of the Marquesas Islands." A special kind of power and charm emanate from its craggy skyline and black sand beaches. You'll want to explore its lush, green valleys, home to impressive archaeological sites and a wide array of plants and wildlife. Visit the small village of Atuona, considered to be the island's capital, and discover the tombs of Paul Gauguin and Jacques Brel, as well as two small museums dedicated to their life and work.

## HONOLULU • PAPEETE

Aboard Le Boréal

From October 05<sup>th</sup> to 20<sup>th</sup>, 2017 (15 nights)

From € 3 920

## HIGHLIGHTS

- UNESCO sites: From Hilo, Volcanoes National Park; Biosphere Reserve of Fakarava in the Tuamotu Archipelago.
- Visit exceptional ports of call in the heart of the Marquesas Islands, whose volcanic landscapes are home to secluded bays and abundant wildlife.
- Beach, swim and snorkelling in the crystal-clear waters of French Polynesia.
- Lecturer on board, specialist in French Polynesia.





## HANAVAVE - FATU HIVA

Grandiose, striking and powerful, the Marquesas are more rugged than their Polynesian sisters. Here, you will find neither lagoons nor reefs; the archipelago's charm lies in its extraordinary wild beauty: waterfalls flowing down vertiginous peaks, jagged cliffs sinking into the indigo sea, and lush vegetation. When the ship stops on the island of Fatu Hiva, the inhabitants of what is considered to be one of the beautiful bays in the world, Hanavave Bay, will welcome you with ukulele music and traditional songs. Do not miss your chance to discover these exotic dances and customs as the trade winds gently blow through the palm trees, infusing the island with the scent of frangipane and Tahitian flowers.



UNESCO

## FAKARAVA

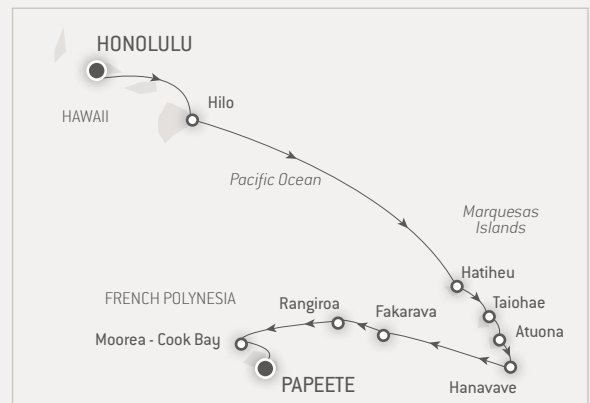
Fakarava's coral ellipsis stretches out over 28 km and is only 8 km large. Listed as a UNESCO Biosphere Reserve, the atoll is a narrow stretch of land sitting on a crystal-clear sea. Travellers here are surprised by the immensity of the lagoon, whose colours evoke an infinite palette. On land, beyond the white-sand beaches, Fakarava is home to pearl farms that are open to visitors. Here you will find the most stunning examples of the famous Tahitian pearls – black pearls with glints of colour, also called tears of the gods. Do not miss this beautiful port of call during which *Le Boréal* will find its place alongside traditional Polynesian dugout canoes.



## HONOLULU • PAPEETE

Le Boréal - From October 05<sup>th</sup> to 20<sup>th</sup>, 2017

16 days / 15 nights



### DAY ITINERARY

- D 1 **Honolulu (Hawaii, USA)**  
Embarkation from 16.00 to 17.00
- D 2 **Hilo (Hawaii, USA)**
- D 3 à 7 **At sea**
- D 8 **Hatiheu (Nuku Hiva, Marquesas Islands)**  
Sailing along Anaho Bay
- D 9 **Sailing along Ua Pou**  
Taiohae (Nuku Hiva, Marquesas Islands)
- D 10 **Atuona (Hiva Oa, Marquesas Islands)**
- D 11 **Hanavave (Fatu Hiva, Marquesas Islands)**
- D 12 **At sea**
- D 13 **Fakarava (Tuamotu, French Polynesia)**
- D 14 **Rangiroa (French Polynesia)**
- D 15 **Moorea - Cook Bay (French Polynesia)**  
**Papeete (French Polynesia)**
- D 16 **Papeete (French Polynesia)**  
Disembarkation.

**PRE-BOOKABLE EXCURSION:** Circle of Fire by helicopter from Hilo. See page 53.

PRE & POST CRUISE PROGRAMMES  
(see page 50 to 53)

### PRICE LIST\*

CRUISE (15 nights on board)

Superior Stateroom	5 230 €	3 920 €
Deluxe Stateroom	5 650 €	4 230 €
Prestige Stateroom - Deck 4	5 980 €	4 480 €
Prestige Stateroom - Deck 5	6 220 €	4 660 €
Prestige Stateroom - Deck 6	6 470 €	4 850 €
Deluxe Suite	8 740 €	6 550 €
Prestige Suite - Deck 5	9 340 €	7 000 €
Prestige Suite - Deck 6	9 710 €	7 280 €
Owner Suite	12 620 €	

Individual stateroom rate

Consult us

Safety and port taxes

750 €

(\*) for details, please refer to General Terms and Conditions and General Important Information, see pages 62 to 66.

# TREASURES OF POLYNESIA

*Moorea, Bora Bora, Rangiroa... From Papeete, set sail to discover the most beautiful islands of Polynesia whose names evoke exoticism and wild beauty. Le Boréal will set sail for the treasures of Polynesia and invites you to discover the sweetness of their exotic scents, their white-sand beaches, volcanic landscapes and colourful sea beds.*



## MARINE LIFE

The beauty of Polynesia's landscapes can only be rivalled by the splendour of the Pacific Ocean's sea beds. Divers all over the world love this spot for the richness and diversity of its ecosystem. These idyllic waters will reveal their secrets to you, even if you are just an amateur snorkeller. Here, colourful exotic fish, sea turtles and manta rays weave a path between the anemones, sponges and lace coral that line the aquamarine lagoons. During your cruise, do not miss the opportunity to admire Polynesia's treasures, the famous black pearls. They are as precious as they are exceptional.



## PAPEETE • PAPEETE

Aboard Le Boréal

From October 20<sup>th</sup> to 27<sup>th</sup>, 2017 (7 nights)

From € 2 740

## HIGHLIGHTS

- Set sail for a cruise 100% Polynesia and discover islands regarded as the most beautiful in the world.
- Discover Polynesia's culture and traditions.
- From Rangiroa, visit a pearl farm and discover the extraordinary black pearl industry.
- Take a scenic helicopter flight over Bora Bora, the "Pearl of the Pacific", considered to be the most beautiful lagoon in the world (optional).
- Enjoy white sand beaches and snorkelling in the calm, clear waters of these archipelago.
- A lecturer with a passion for Polynesian culture will be on board.



## MOOREA - COOK BAY

Lush, emerald vegetation contrasting with the limpid turquoise of the ocean, charming wooden bungalows scattered along pristine beaches...the beauty of Moorea is sumptuous, unchanged since James Cook discovered the island in 1769. Edged with coral, this small island is renowned for its natural gardens of tropical flowers as well as for its pineapple plantations. Wander along the two bays that slice through the coral island, or head off to explore the Belvedere, which will offer you a breathtaking view over the majestic volcanic peaks of the island, such as Mount Rotui. Unless you would rather encounter the many dolphins and rays that swim gracefully in the opalescent lagoon.



## BORA BORA

There are no words to describe the extravagant and disarming beauty of Bora Bora. With its vast ring of coral encircling the majestic silhouette of Mount Otemanu, the pearl of the Leeward Islands, offers travellers perfect harmony in infinite shades of blue or an explosion of colours with red hibiscuses and tropical fish. *Le Boréal* will take you to the heart of this earthly paradise that is more beautiful than you can imagine – an unspoiled Eden with extraordinary marine life. Succumb to the delightfully sweet scent of Tahitian flowers and vanilla, and discover ancestral Polynesian traditions.



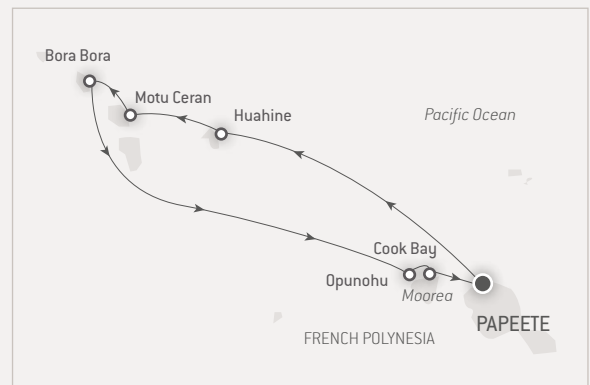
## PAPEETE

Discover Papeete, capital of French Polynesia, located on the famous island of Tahiti, at the heart of the Society Islands. If Tahiti as a whole is renowned throughout the world for its legendary beauty and its precious pearls, Papeete is one of the jewels in its crown. At the water's edge, bungalows on stilts offer a breathtaking view over the azure lagoons, whilst the lush forests are teeming with secret and wild areas, without forgetting the "Mapuru Paraita" market, for which the city is famous. Do not miss the chance to immerse yourself in this concerto of multicoloured flavours and fragrances, between coconut milk, Tiare flower garlands and precious mother-of-pearl ornaments.

## PAPEETE • PAPEETE

Le Boréal - From October 20<sup>th</sup> to 27<sup>th</sup>, 2017

8 days / 7 nights



### DAY ITINERARY

D 1	<b>Papeete</b> (French Polynesia) Embarkation from 18.00 to 19.00
D 2	Huahine (French Polynesia)
D 3	Motu Ceran (French Polynesia)
D 4	Bora Bora (French Polynesia)
D 5	Bora Bora (French Polynesia)
D 6	Moorea - Opunohu (French Polynesia)
D 7	Moorea - Cook Bay (French Polynesia) Papeete (French Polynesia)
D 8	<b>Papeete</b> (French Polynesia) Disembarkation.

PRE & POST CRUISE PROGRAMMES  
(see page 50 to 53)

### PRICE LIST\*

#### CRUISE (7 nights on board)

Superior Stateroom	3 430 €	2 740 €
Deluxe Stateroom	3 710 €	2 960 €
Prestige Stateroom - Deck 4	4 010 €	3 200 €
Prestige Stateroom - Deck 5	4 330 €	3 460 €
Prestige Stateroom - Deck 6	4 670 €	3 730 €
Deluxe Suite	6 310 €	5 040 €
Prestige Suite - Deck 5	8 650 €	6 920 €
Prestige Suite - Deck 6	9 340 €	7 470 €
Owner Suite	12 150 €	

Individual stateroom rate

Consult us

Safety and port taxes

350 €

PROVANT BONUS  
Up to  
-20%

(\*) for details, please refer to General Terms and Conditions and General Important Information, see pages 62 to 66.

# POLYNESIA & EASTER ISLAND

*From Papeete, set sail aboard Le Boréal and discover Fakarava, the jewel of the Tuamotus, then off unusual destinations such as the Gambier or Pitcairn Islands. Next, you will visit Easter Island and its mysterious sculpted basalt statues which stand with their backs to the immensity of the Pacific Ocean.*



## THE POLYNESIAN ATOLLS

French Polynesia will not fail to live up to expectations. This cruise will offer you a unique opportunity to discover the Polynesian atolls, consisting of sandy islets emerging at the surface of the Pacific Ocean. Formed by the collapse of a volcano, these islands with a more or less mountainous terrain are generally encircled by a coral ring. They boast an exceptional biodiversity, so you'll be able to observe hundred of different fish species in their colourful and captivating world. Lost in the midst of the South Pacific, this "Blue Paradise" offers the perfect blend of vast white sand beaches edged with palm trees in Moorea and the volcanic and mountainous landscapes of Tahiti.

## GAMBIER ISLANDS

Aboard *Le Boréal*, we invite you to come and discover the most remote and little-known Polynesian archipelago: the Gambier Islands. The tall island of Mangareva, meaning "floating mountain" in Polynesian, is an unusual place between sea and ocean, surrounded by a magnificent coral reef and boasting an unusual, lush vegetation including pines and tropical flowers. Far from the usual tourist destinations, these islands are encircled by a large ring of coral, forming a lagoon of varying and changing colours. When the ship calls in Rikitea, come and discover the town's exceptional cultural heritage, including its wonderful cathedral built entirely from coral and wood and the quality of its black pearls.

## PAPEETE • HANGA ROA

Aboard Le Boréal

From October 27<sup>th</sup> to November 09<sup>th</sup>, 2017 (13 nights)

From € 3 170

COMPLIMENTARY  
SHORE EXCURSIONS

## HIGHLIGHTS

- Trips in Zodiac® dinghies and snorkelling at Fakarava, listed as a UNESCO Biosphere Reserve.
- On the Gambier Islands, visit Saint Michel's Cathedral, a magnificent building erected in 1840.
- From Mangareva, you can visit one of the most renowned pearl farms.
- From Pitcairn, visit the museum and its great collection of items from *the Bounty*.
- From Hanga Roa, discover the impressive Ahu Tahai and its monumental statues listed as Archaeological Heritage by UNESCO.
- A lecturer passionate about Rapa Nui and Orongo culture will be on board.





## PITCAIRN

During your cruise, *Le Boréal* will take you to the Pitcairn Islands, an unspoiled and idyllic subtropical environment with crystal-clear water, abundant flora and endemic wildlife. First, its capital, Adamstown, a charming village named after James Adam, one of the mutineers of the famous HMS *Bounty*. During your stop here, do not miss the chance to visit the museum, which houses a large collection of objects retrieved from the *Bounty*. Farther North, sail past Ducie Island, surrounded by a turquoise lagoon encircled by precious coral reefs that are home to rich and surprising marine life. Succumb to the charms of this fascinating archipelago at the heart of generous landscapes brimming with history.



UNESCO

## EASTER ISLAND

Easter Island, or *Rapa Nui*, bears witness to a unique culture and its tradition of monumental sculpture and architecture is powerful, imaginative and enigmatic. Like a piece of confetti sitting off the Chilean coast, Easter Island is one of the most isolated parts of the planet and it fuels the dreams of countless travellers. When this small piece of land was visited by the explorer J. Roggeveen on Easter Sunday in 1722, it had 4,000 inhabitants. Join us aboard *Le Boréal* to discover the mysterious Moai, or 'walking statues', their backs turned to the sea and listed as a UNESCO World Heritage Site. You might attempt to solve the mystery of how these sculpted blocks of basalt were made or what the mysterious Rongorongo tablets say.



## PAPEETE • HANGA ROA

Le Boréal - From Oct. 27<sup>th</sup> to Nov. 09<sup>th</sup>, 2017

14 days / 13 nights



### DAY ITINERARY

D 1	<b>Papeete</b> (French Polynesia) Embarkation from 16.30 to 17.30
D 2	<b>Fakarava</b> (Tuamotu, French Polynesia)
D 3, 4	<b>At sea</b>
D 5	<b>Rikitea</b> (Mangareva, Gambier Islands)
D 6	<b>Aukena</b> (Gambier Islands)
D 7	<b>At sea</b>
D 8	<b>Adamstown</b> (Pitcairn, British Overseas Territory)
D 9	<b>Sailing along Ducie Island</b> (Pitcairn, British Overseas Territory)
D 10	<b>At sea</b>
D 11	<b>At sea</b>
D 12	<b>Hanga Roa</b> (Easter Island, Chile)
D 13	<b>Hanga Roa</b> (Easter Island, Chile)
D 14	<b>Hanga Roa</b> (Easter Island, Chile) Disembarkation.

### PRE & POST CRUISE PROGRAMMES

(see page 50 to 53)

### PRICE LIST\*

#### CRUISE (13 nights on board)

Superior Stateroom	4 530 €	3 170 €
Deluxe Stateroom	4 890 €	3 420 €
Prestige Stateroom - Deck 4	5 190 €	3 630 €
Prestige Stateroom - Deck 5	5 390 €	3 770 €
Prestige Stateroom - Deck 6	5 610 €	3 920 €
Deluxe Suite	7 570 €	5 290 €
Prestige Suite - Deck 5	8 090 €	5 660 €
Prestige Suite - Deck 6	8 420 €	5 890 €
Owner Suite	10 940 €	

Individual stateroom rate

Consult us

Safety and port taxes

650 €

(\*) for details, please refer to General Terms and Conditions and General Important Information, see pages 62 to 66.

POYANT BONUS  
Up to  
-30%

# FROM VIETNAM TO MYANMAR

*L'Austral will take you from the shores of Vietnam to the golden pagodas of the country once known as Burma, via the colonial cities of Malaysia. Before you sail on to Myanmar, Singapore and Kuala Lumpur will reveal their modernity and singularity, while Malacca and Penang will present their historical treasures.*



## HO CHI MINH CITY

Founded in the 17<sup>th</sup> century, Ho Chi Minh City, formerly Saigon, was initially a small trading port of the Khmer kingdom. A century later, it became the capital of Cochinchina and the largest French colony of the Far East. Its former name of Saigon, which still evokes the mysteries of the East, was a legendary source of inspiration for the novels of the French author Marguerite Duras. Today it is a thriving metropolis, both the largest city in the country and the economic powerhouse of Vietnam. From Ho Chi Minh, you will set off to discover the Mekong, the bearer of riches in its bright green surroundings, and also known as the “River of Nine Dragons.” Do not miss the Mekong Delta where little coloured ships throng on market days.



## HO CHI MINH • YANGON

Aboard L'Austral

From Oct. 28<sup>th</sup> to Nov. 09<sup>th</sup>, 2017 (12 nights)

From € 3 270

## HIGHLIGHTS

- UNESCO sites: Discover the old town Malacca and its fascinating Asian, Portuguese and Dutch heritage.
- Overnight in Singapore and tour of the city, areas and temples.
- Call in Port Klang, gateway to Kuala Lumpur, the capital of Malaysia.
- From Yangon, discover the most sacred Burmese pagoda: Schwedagon.
- Lecturer on board, expert in the region and its culture.



## SINGAPORE

Strategically situated at the crossroads of Asia on the tip of the Malay Peninsula, Singapore is one of the “Four Asian Dragons”. A trading city on the edges of the Orient, Singapore invites travellers to stroll through its districts, all with different atmospheres, from Chinatown to Arab Street, and from Little India to the Colonial District. Its ethnic, religious and cultural diversity are an illustration of the complexity of an entire continent. Still rich in British traditions and stoicism, the city is now the third largest financial centre in the world. Entirely dedicated to business, Singapore is also home to a remarkable artistic vitality. Do not miss this opportunity to discover the charming Temple of Heavenly Happiness and the Colonial District, the true cultural heart of the city.



## MYANMAR, a spiritual land

Former jewel of the British Indian Empire, Burma (now Myanmar), is a country of gold and lights, and deeply attached to Buddha. Lying between India and China, like an enclave at the base of the Himalayas, Myanmar resonates like a name taken from old maps, like a stopping point on the route of the Messageries Maritimes of the time... A country of ruby and jade, of conquering kings on a quest to find sacred relics, a country of 1,000 pagodas whose domes sparkle in warm amber shades - through its port of calls, *L'Austral* will open the doors of the kingdom of lords to you.

*"I found that in my recollections, so vague and uncertain, the Shwedagon rose superb as on that first morning it had risen, glistening with its gold, like a sudden hope in the dark night of the soul, glistening against the fog and smoke of the thriving city".*  
W. Somerset Maugham - *The Gentleman in the Parlour*.



## YANGON

Better known under its colonial name, Rangoon, the former capital of Myanmar was long nicknamed "the garden city of the East" and it remains the country's administrative and economic capital. The city is lush and refreshing thanks to its luxuriant vegetation, its shaded parks and its royal lakes. Having retained a colonial ambiance that contributes to its nostalgic charm, Yangon exudes a very special atmosphere. During your visit, do not miss the majestic Shwedagon Pagoda, the most sacred in Burma. Its dome is covered in gold and encrusted with over 2,500 precious stones. Nestling in the heart of a vast religious complex, it is surrounded by 72 other buildings, small pagodas and prayer rooms. The purely Burmese architecture includes golden Buddhas and legendary Nats.



## HO CHI MINH • YANGON

*L'Austral* - From Oct. 28<sup>th</sup> to Nov. 09<sup>th</sup>, 2017

13 days / 12 nights



### DAY ITINERARY

D 1	<b>Ho Chi Minh (Vietnam)</b> Embarkation from 16.00 to 17.00
D 2	Ho Chi Minh (Vietnam)
D 3	Ho Chi Minh (Vietnam) - Departure 07.00 Sailing in Saigon River
D 4	At sea
D 5	Singapore (Singapore)
D 6	Singapore (Singapore)
D 7	Malacca (Malaysia)
D 8	Port Klang (Malaysia)
D 9	Penang (Malaysia)
D 10	Phang Nga (Thailand)
D 11	At sea
D 12	Yangon (Myanmar)
D 13	<b>Yangon (Myanmar)</b> Disembarkation.

### PRE & POST CRUISE PROGRAMMES

(see page 50 to 53)

### PRICE LIST\*

#### CRUISE (12 nights on board)

Superior Stateroom	4 680 €	3 270 €
Deluxe Stateroom	5 060 €	3 540 €
Prestige Stateroom - Deck 4	5 360 €	3 750 €
Prestige Stateroom - Deck 5	5 580 €	3 900 €
Prestige Stateroom - Deck 6	5 800 €	4 060 €
Deluxe Suite	7 830 €	5 480 €
Prestige Suite - Deck 5	8 360 €	5 850 €
Prestige Suite - Deck 6	8 700 €	6 090 €
Owner Suite	11 310 €	

Individual stateroom rate

Consult us

Safety and port taxes

600 €



(\*) for details, please refer to General Terms and Conditions and General Important Information, see pages 62 to 66.

# ISLANDS OF INDONESIA

*Indonesia is composed of a multitude of islands scattered across the Indian Ocean. It is home to some of the world's most stunning landscapes, from impenetrable jungles to volcanic mountains and long, unspoiled beaches. From Yangon, set sail to the heart of this mosaic of cultures where ancient temples and ultra-modern cities exist side by side.*



## MERGUI ARCHIPELAGO

As *L'Austral* glides along the turquoise waters of the Mergui Archipelago among the 800 islets, sit back and enjoy the magnificent landscapes: unspoiled nature, mangrove and primary jungle. Located in the far South of the country, the archipelago remains little-known, isolated from the most popular maritime routes. Yet this small but extraordinary island paradise is inhabited by "Sea Gypsies": the Moken, a semi-nomadic people. They are outstanding divers who live mainly off what they gather from the sea. Do not miss their flat-bottomed boats with a palm-frond top. These "kabangs" glide across the clear waters from island to island.

## SUMATRA

Sumatra, Indonesia's largest island, is a land of adventure and yet it is still little-known. This vast green garden, largely covered in sparkling rice fields and dotted with majestic volcanic cones boasts exceptional cultural diversity and is home to an unusual population made up of a multitude of ethnic groups, such as the Batak people, who were once head-hunters, and whose traditional houses are shaped like a horse's saddle. During your cruise aboard *L'Austral*, you will be able to get as close as possible to the idyllic beaches, but also to discover during your stops in Belawan or Banda Aceh, towns with exceptional charm whose history can be read on the many facades of the former colonial dwellings that line the streets.

## YANGON • BALI

Aboard *L'Austral*

From November 09<sup>th</sup> to 24<sup>th</sup>, 2017 (15 nights)



From € 4 380

## HIGHLIGHTS

- "Expedition" voyage accompanied by our professional naturalist- guide.
- Outings every day in Zodiac® dinghies.
- An exceptional moment spent sailing around the Krakatoa volcano, listed as a UNESCO World Heritage Site.
- Discovering Sumatra, Indonesia's largest island.
- Meeting the Moken, a semi-nomadic people nicknamed "the Sea Gypsies".
- Possibility of snorkelling in the heart of Indonesia's islands.





UNESCO

## SAILING AROUND KRAKATOA

The legendary Krakatoa is familiar to all, although few know where it is located. It is relatively peaceful and lies in the Sunda Strait, between Java and Sumatra. At the heart of the Pacific ring of fire, aboard *L'Austral*, set off to visit the Krakatoa Islands, with their fertile volcanic peaks, lakes, natural water sources and the sinuous waterfalls that race down the slopes of the volcano. Although its name means "Silent Mountain" you will be able to see vapours and smoke rising from its majestic cone. You may also see some of the traditional fishing boats calmly moored in the shadow of the volcano.



UNESCO

## FROM YANGON

While Yangon has remained an Indo-Chinese capital where the memories of the Indian Empire are gradually fading, Mandalay is still rich in the secular traditions of the former royal patronage. Here, the people still know how to beat gold into fine sheets, sculpt teak into gracious deities, carve marble and hammer iron to produce precious gongs. We invite you to discover the "Plain of Temples" in Bagan, a vast expanse bordering the shores of the Irrawaddy River, bristling with a thousand golden pagodas whose spires seem to be reaching for the sky. Here, some 2,000 religious foundations built between the 11<sup>th</sup> and 14<sup>th</sup> centuries offer travellers a glimpse of eternity. The visits included in these programmes will allow you to get to the very heart of fascinating, mysterious Myanmar and its ancestral traditions.



## YANGON • BALI

L'Austral - From Nov. 09<sup>th</sup> to 24<sup>th</sup>, 2017

16 days / 15 nights



### DAY ITINERARY

- D 1 **Yangon (Myanmar)**  
Embarkation from 16.00 to 17.00
- D 2 *At sea*
- D 3, 4 **Mergui Archipelago (Myanmar)**
- D 5 *At sea*
- D 6 **Belawan (Sumatra, Indonesia)**
- D 7 **Banda Aceh (Sumatra, Indonesia)**
- D 8 **Pulau Simeulu (Indonesia)**
- D 9 **Pulau Nias (Teluk Dalam, Indonesia)**
- D 10 **Padang (Sumatra, Indonesia)**
- D 11 **Bengkulu (Sumatra, Indonesia)**
- D 12 **Krakatoa (Indonesia)**
- D 13 *At sea*
- D 14 **Sumenep (Indonesia)**
- D 15 **Probolinggo (Java, Indonesia)**
- D 16 **Bali (Indonesia)**  
Disembarkation.

### PRE & POST CRUISE PROGRAMMES

(see page 50 to 53)

### PRICE LIST\*

#### CRUISE (15 nights on board)

Superior Stateroom	5 850 €	4 380 €
Deluxe Stateroom	6 320 €	4 740 €
Prestige Stateroom - Deck 4	6 700 €	5 020 €
Prestige Stateroom - Deck 5	6 970 €	5 220 €
Prestige Stateroom - Deck 6	7 250 €	5 430 €
Deluxe Suite	9 780 €	7 330 €
Prestige Suite - Deck 5	10 450 €	7 830 €
Prestige Suite - Deck 6	10 870 €	8 150 €
Owner Suite	14 130 €	

Individual stateroom rate

Consult us

Safety and port taxes

750 €

POYANT BONUS  
Up to  
-25%

(\*) for details, please refer to General Terms and Conditions and General Important Information, see pages 62 to 66.

# FROM INDONESIA TO AUSTRALIA

*Your journey will begin in Bali, the island paradise blessed by the gods. Next, L'Austral will head North to the Maluku Islands before making its way South to reach Australia, "the island continent", between cosmopolitan cities, aboriginal culture, and extraordinary underwater world.*



## PINK BEACH, APTLY NAMED FOR ITS PINK SAND

Imagine a pure blue sky with only a few cotton wool clouds lazily bobbing across it, green hills covered in lush vegetation interspersed with rocky cliffs, a calm sea that gently laps against a beach where the soft sand is neither golden nor black, but a delicate powder pink... Lying to the west of the island of Flores, Pink Beach is one of just seven beaches on the planet where this very special pink sand can be seen. The colour comes from a red pigment left on the corals by a microscopic animal, a pigment which is mixed in minuscule fragments with the grains of white sand, giving the shore this romantic colour. A wonder of nature that will form one of the magical memories of your cruise!



UNESCO

## KOMODO NATIONAL PARK

On the remote island of Komodo, the eye can feast on a landscape of savannah and mangrove. A protected natural reserve, it is home to the largest lizards still walking the Earth, distant cousins of the dinosaurs: the monitor lizards of Komodo - the Komodo dragons. Do not miss the visit to the Komodo National Park, which has been a UNESCO World Heritage Site since 1991. These volcanic islands are inhabited by around 5,700 giant lizards, who earned their name of "Komodo Dragon". These reptiles can grow to 4 metres in length and weigh around 70 kg, and are found nowhere else on earth, so they present a huge scientific interest for the study of evolution.

## BALI • CAIRNS

Aboard L'Austral

From Nov. 24<sup>th</sup> to Dec. 08<sup>th</sup>, 2017 (14 nights)



From € 4 530

## HIGHLIGHTS

- "Expedition" voyage accompanied by our professional naturalist- guide.
- Outings everyday in Zodiac® dinghies.
- UNESCO site: Komodo National park.
- The translucent waters and pink sand of Indonesia's most beautiful beach, Pink Beach.
- Discover the Asmat region with small rural settlements and a wild beauty, and canoe warriors ceremony.
- From Lizard Island, snorkelling in Watson's Bay.



## BANDA NEIRA

Like a pearl necklace set against a coral backdrop, the 10 small Banda Islands are dotted between Asia and the Pacific Ocean. From the age-old traditions of authentic cultures to ancient vestiges, traditional arts and crafts and, above all, powerful volcanoes, coral reefs and lush green jungle... The attractions of this remote archipelago seem endless. Better known as the legendary "Spice Islands" of the Ancient World, these small volcanic landmasses are covered with imposing aromatic conifers that produce nutmeg and mace, two precious spices. During your voyage, visit Banda Neira, the islands' capital. Located on the main island of Palau Neira, this picturesque town proudly invites visitors to admire its rich and moving history, reflected in its architecture - a mix of forts, old cannons and beautiful colonial homes.



## FLORES ISLAND - LARANTUKA

Many travellers consider that Flores, or "flower island", is one of the most beautiful islands in the Indonesian archipelago. Far from the most popular maritime routes, this small remote land off the east coast of Bali is authentic, and home to a number of ethnic groups, still living on the lands of their forefathers to the pace of their customs and traditions. When *L'Austral* calls at Larantuka, you will discover a region that is still very much marked by the Portuguese colonial period, when trading precious sandalwood from the Timor Sea was one of the island's main resources and will visit a small traditional village where the inhabitants will welcome you with ancient songs and dances and demonstrate the art of weaving the famous Ikat, a colourful artisanal fabric with harmonious patterns.

## BALI • CAIRNS

*L'Austral* - From Nov. 24<sup>th</sup> to Dec. 08<sup>th</sup>, 2017

15 days / 14 nights



### DAY ITINERARY

- D 1 **Bali (Indonesia)**  
Embarkation from 16.00 to 17.00
- D 2 Pink Beach (Komodo, Indonesia)
- D 3 Komodo, Loh Liang (Indonesia)
- D 4 Larantuka (Flores, Indonesia)
- D 5 At sea
- D 6 Banda Neira (Indonesia)
- D 7 Kai Islands (Indonesia)
- D 8 Triton Bay (Indonesia)
- D 9 At sea
- D 10 Agats (West Papua)
- D 11 At sea
- D 12 Cape York (Australia)
- D 13 At sea
- D 14 Lizard Island (Australia)
- D 15 **Cairns (Australia)**  
Disembarkation.

PRE & POST CRUISE PROGRAMMES  
(see page 50 to 53)

### PRICE LIST\*

#### CRUISE (14 nights on board)

Superior Stateroom	6 050 €	4 530 €
Deluxe Stateroom	6 530 €	4 890 €
Prestige Stateroom - Deck 4	7 060 €	5 290 €
Prestige Stateroom - Deck 5	7 620 €	5 710 €
Prestige Stateroom - Deck 6	8 230 €	6 170 €
Deluxe Suite	11 110 €	8 330 €
Prestige Suite - Deck 5	15 240 €	11 430 €
Prestige Suite - Deck 6	16 460 €	12 340 €
Owner Suite	21 400 €	

Individual stateroom rate

Consult us

Safety and port taxes

700 €

POYANT BONUS  
Up to  
-25%

(\*) for details, please refer to General Terms and Conditions and General Important Information, see pages 62 to 66.

# IN THE HEART OF THE PACIFIC

*Located in the Coral Triangle, the faraway land of Papua New Guinea is one of the most mysterious in the world. Aboard L'Austral, discover the wild beauty of this remote country before setting sail for the Solomon Islands and the Vanuatu archipelago, which will reveal to you a unique décor of long beaches and slumbering volcanoes.*



## TUFI

Situated between the Salomon and Coral seas, to the North of its imposing neighbour, Australia, Papua New Guinea offers visitors extraordinary nature that cannot be found anywhere else. Often referred to as the land of a thousand cultures, where more than 800 languages are spoken, Papua New Guinea remains a land of wild beauty and permanent contrast of jagged mountains covered in dense rainforest, and of white-sand beaches surrounding the world's most stunning underwater scenery. During your cruise, we will make an exceptional stop on Tufi. Often called "country's best kept secret", this natural wonder nestling in the fjords of the South Pacific boasts an exceptional cultural richness thanks to its numerous traditional villages; but also extraordinary underwater scenery.



## THE SOLOMON ISLANDS

This secluded, remote destination is a tropical Eden where Nature is as beautiful as it was at the dawn of time. For over two centuries, the Solomon Islands have been fuelling the dreams of romantic souls. An archipelago of over 900 mostly volcanic islands, this "lost paradise" boasts mountains and rugged landscapes covered in lush, tropical vegetation. Renowned around the world for its crystal waters, it offers visitors the chance to see a combination of exceptional coral reefs and several hundred warships. Aboard *L'Austral*, we invite you to discover this archipelago via the small Kennedy Island, named after J. F. Kennedy during the Second World War, or Ghizo Island, renowned for its crystal-clear waters and its long, fine-sand beaches.



## CAIRNS • NOUMEA

Aboard L'Austral

From December 08<sup>th</sup> to 23<sup>rd</sup>, 2017 (15 nights)



From € 4 530

## HIGHLIGHTS

- "Expedition" voyage accompanied by our professional naturalist-guides to talk about hidden treasures of those faraway islands.
- Take numerous trips in Zodiac® dinghies to get closer to nature and wildlife.
- Discover Papua New Guinea, mysterious land of fine-sand beaches and deep jungle.
- From Rabaul, observation of the Mount Tavurvur, the most active volcano of the region.
- Discover the Solomon Islands and their picture-postcards landscapes.
- Possibility of snorkelling in the clear waters of the Vanuatu archipelago.



## NEW CALEDONIA - NOUMEA

A distant land, a land of contrasts, an authentic land... New Caledonia is a unique and multi-dimension destination. Bathed in crystal waters and with gentle trade winds blowing all year round, the island offers visitors exceptional scenery whilst on the horizon a unique aquarium looms - the Pacific Ocean. As the final port of call on your voyage, discover Noumea, whose evocative name means "little island of fish". Typifying the French South Pacific, Noumea is a garden city where urban development and nature manage to successfully co-exist. Built on a starfish-shaped peninsula, the city is surrounded by large bays that are home to beaches and marinas. Do not miss the visit of Tjibaou Cultural Centre, dedicated to the traditional Kanak's culture. During this visit, you will discover the true identity of this autochthon tribe of New-Caledonia.



## TANNA

Located to the North of New Caledonia, the Vanuatu archipelago scatters its 81 islands and islets bordering the Coral Sea and the Pacific Ocean. Made up of volcanic lands covered in mountains and deep forests with giant banyan trees, this corner of the world is considered to be one of the most unspoiled places on our planet. Aboard *L'Austral*, you will have the chance to discover these small faraway islands and, more particularly, Tanna. First sighted by Captain Cook in 1774, it offers visitors magical landscapes, including bays with crystal-clear water, fertile plains and abundant vegetation. Tanna is also called "mysterious island", who ascribe many legends to the Yasur volcano and perpetuate an extremely rich and original culture.



## CAIRNS • NOUMEA

*L'Austral* - From Dec. 08<sup>th</sup> to 23<sup>rd</sup>, 2017  
16 days / 15 nights



### DAY ITINERARY

- D 1 **Cairns (Australia)**  
Embarkation from 16.00 to 17.00
- D 2 *At sea*
- D 3 *Alotau (Papua New Guinea)*
- J 4 *Tufi (Papua New Guinea)*
- D 5 *Trobriand Islands (Papua New Guinea)*
- D 6 *Rabaul (Papua New Guinea)*
- D 7 *Rabaul (Papua New Guinea)*
- D 8 *At sea*
- D 9 *Roderick Bay (Solomon Islands)*
- D 10 *Santa Ana (Solomon Islands)*
- D 11 *Vanikoro (Solomon Islands)*
- D 12 *Ureparapara (Vanuatu)*  
*Sana Island (Espiritu Santo, Vanuatu)*
- D 13 *Lagoon Paradise (Vanuatu)*
- D 14 *Tanna (Vanuatu)*
- D 15 *Noumea (New Caledonia) - late arrival*
- D 16 **Noumea (New Caledonia)**  
Disembarkation.

PRE & POST CRUISE PROGRAMMES  
(see page 50 to 53)

### PRICE LIST\*

CRUISE (15 nights on board)

Superior Stateroom	6 040 €	4 530 €
Deluxe Stateroom	6 530 €	4 890 €
Prestige Stateroom - Deck 4	6 920 €	5 190 €
Prestige Stateroom - Deck 5	7 190 €	5 390 €
Prestige Stateroom - Deck 6	7 480 €	5 610 €
Deluxe Suite	10 100 €	7 570 €
Prestige Suite - Deck 5	10 790 €	8 090 €
Prestige Suite - Deck 6	11 220 €	8 410 €
Owner Suite	14 590 €	

Individual stateroom rate

Consult us

Safety and port taxes

750 €

POYANT BONUS  
Up to  
-25%

(\*) for details, please refer to General Terms and Conditions and General Important Information, see pages 62 to 66.

# THE BEST OF NEW ZEALAND

*For the Christmas and New Year holidays, in the company of your loved ones, set sail aboard L'Austral from Noumea to the heart of New Zealand. In an elegant and comfortable setting, discover "the Land of the Long White Cloud", raising from the deep blue of the Pacific Ocean, offering travellers an insular realm with an infinity of landscapes.*



## AKAROA

As you watch from the exterior decks of *L'Austral*, the Banks Peninsula will slowly start to appear. This long oval strip of land is interspersed with many bays and natural harbours. Nestling in a large bay with clear water, at the foot of a volcanic cirque, the charm of the gorgeous village of Akaroa lies in its French colonial heritage against a backdrop of wild landscapes. The small port owes its French influence to the French captain of a whaling ship, Jean-François Langlois, since 1838. From here, a number of excursions out to sea are organised to get close to the fauna, between sheep, blue penguins and seals.



## AUCKLAND

Before reaching Auckland, as *L'Austral* cruises off the coast of the Coromandel Peninsula, you will be able to admire a landscape lined with clear-water inlets and rocky outcrops against a backdrop of pristine forest. Further on, discover the "city of many lovers" according to its Maori name, *Tamaki Makaurau*. Welcome to the "City of Sails"! One of the few cities in the world to have harbours on two separate major bodies of water, it cleverly blends modernity and culture through numerous architectural gems. A place of art and fashion, Auckland's charm lies in its cosmopolitan atmosphere, its exceptional cultural venues and, of course, the omnipresence of water, which only adds to the magic of the place. This is an exceptional journey to the heart of the home of the *All Blacks*.

CHRISTMAS &  
NEW YEAR'S CRUISE

## NOUMEA • DUNEDIN

Aboard L'Austral

From Dec. 23<sup>rd</sup>, 2017 to Jan. 05<sup>th</sup>, 2018 (13 nights)



From € 4 280

## HIGHLIGHTS

- Spend Christmas and New Year's Day in the heart of New Zealand.
- 6 "Expedition" stops, accompanied by our professional naturalist- guide.
- Numerous trips in Zodiac® dinghies to get closer to nature and wildlife.
- Sail in New Zealand's fjords, listed with UNESCO.
- Meet the Maori people, brave warriors with ancestral traditions and customs.
- In Wellington, discover the Te Papa Tongarewa museum.
- A lecturer passionate by New Zealand history will be on board.





## TAURANGA - ROTORUA

The North Island, also known as “the smoking island”, is home to New Zealand’s most atypical city. Nestled on the shores of the lake bearing the same name, Rotorua is considered to be the “Maori face” of this country. Surrounded by bush, forests and cultivated lands, a chain of fifteen lakes dots the landscape like pearls on a dazzling necklace. From your port of call in Tauranga to the edges of Rotorua, set out to discover the protected forests, whose thick mantle conceals an astonishing landscape: volcanoes, hot springs, spouting geysers, rivers and gorges, and lakes that are sometimes deep blue, sometimes tinged in orange. Wonder at this land of a thousand and one colours, birthplace of the Maori culture.



## MAORI CULTURE

During your cruise aboard *L'Austral*, discover the ancestral culture of the brave Maori, the indigenous Polynesian warrior people of New Zealand, who settled here in successive waves from the 13<sup>th</sup> century onwards. The very ancient tribal way of life of the Maori is passed down from generation to generation. Today, numerous dances and songs still remain and are performed by the current generations during traditional shows. The Maori language and gestures are a core part of New Zealand’s identity. Don’t miss their traditional dress, which has remained unchanged for centuries. Discover the Maori greeting ceremony, their war dances, crafts and, in particular, their impressive tattoo art, with incredible drawings which can cover a warrior’s entire body.

## NOUMEA • DUNEDIN

L'Austral - From Dec. 23<sup>rd</sup>, 2017 to Jan. 05<sup>th</sup>, 2018

14 days / 13 nights



### DAY ITINERARY

D 1	<b>Noumea</b> (New Caledonia) Embarkation from 18.00 to 19.00
D 2	<b>Amedee Island</b> (New Caledonia)
D 3	At sea
D 4	At sea
D 5	<b>Bay of Islands</b> (Waitangi, New Zealand)
D 6	<b>Auckland</b> (New Zealand)
D 7	<b>Tauranga</b> (New Zealand)
D 8	At sea
D 9	<b>Wellington</b> (New Zealand)
D 10	<b>Akaroa</b> (New Zealand)
D 11	At sea
D 12	Sailing through the Milford Sound and through the Doubtful Sound (New Zealand)
D 13	Sailing through the Dusky Sound (New Zealand)
D 14	<b>Dunedin</b> (New Zealand) Disembarkation.

PRE & POST CRUISE PROGRAMMES  
(see page 50 to 53)

## PRICE LIST\*

### CRUISE (13 nights on board)

Superior Stateroom	6 120 €	4 280 €
Deluxe Stateroom	6 610 €	4 620 €
Prestige Stateroom - Deck 4	7 140 €	4 990 €
Prestige Stateroom - Deck 5	7 710 €	5 390 €
Prestige Stateroom - Deck 6	8 330 €	5 830 €
Deluxe Suite	11 240 €	7 860 €
Prestige Suite - Deck 5	15 420 €	10 790 €
Prestige Suite - Deck 6	16 660 €	11 660 €
Owner Suite	21 660 €	

Individual stateroom rate

Consult us

Safety and port taxes

650 €

POYANT BONUS  
Up to  
-30%

(\*) for details, please refer to General Terms and Conditions and General Important Information, see pages 62 to 66.

# SUBANTARCTIC ISLANDS

*Fjords, black-sand beaches or imposing cliffs.... L'Austral will introduce you to the primitive beauty of the New Zealand Subantarctic Islands. At the gateway to the Southern Ocean, these archipelagos of volcanic origin are home to an exuberant flora and fauna with many endemic species.*



## DUNEDIN • WELLINGTON

Aboard L'Austral

From January 05<sup>th</sup> to 21<sup>st</sup>, 2018 (16 nights)



From € 6 330

## HIGHLIGHTS

- “Expedition” voyage accompanied by our professional naturalist-guides.
- Outings in Zodiac® dinghies.
- Hiking possible at the heart of islands, all listed at UNESCO World Heritage.
- Wildlife: colonies of fur seals, elephant seals, king and yellow-eyed penguins. A very wide variety of birds: Gibson's albatross, giant petrels, and Auckland shags. Also rorquals, Commerson's dolphins and orcas.
- Landscapes: Beaches of black sand, cliffs and lush green prairies, snow - capped mountain chains, glacial valleys fjords, primary forests.

UNESCO

## SUBANTARCTIC ISLANDS

Composed of five small archipelagos and situated in the Southern Ocean between the Antarctic and Subtropical Convergences, New Zealand's Sub Antarctic Islands will reveal their strange, primitive beauty to you. Also nicknamed “the Galápagos of the Southern Ocean”, these volcanic islands are known for the surprisingly rich biodiversity which has earned them their place as UNESCO World Heritage Sites. As they are less mountainous and less iced over than South Georgia or the Falkland Islands, it is easier to explore them through hiking. Cruising aboard *L'Austral*, discover their exuberant fauna composed of species that are often endemic, such as the yellow-eyed penguin, which is the rarest of its species.



UNESCO

## MACQUARIE ISLAND

This nature reserve in the Pacific Ocean is a curious speck of dust sitting on the water halfway between Australia and the Antarctic continent. Macquarie Island is a protected area listed as a UNESCO World Heritage Site due to its natural beauty and its geological features. The island's wild landscapes, including sheer rock faces and coastal plateaux scattered with natural pools and lakes, offer an exceptional biodiversity. Beyond the black-sand beaches, lush vegetation covers the island's mountains and astonishing wildlife has taken up residence here. The island is a gathering place for seals, penguins and a number of bird colonies. When *L'Austral* calls here, discover these magnificent lands sculpted by the winds and sea.





UNESCO

## THE AUCKLAND ISLANDS

Lying 500 km South of New Zealand, the Auckland Islands, or "Motu Maha" in Maori are the largest, highest and biologically richest of the New Zealand Sub Antarctic Islands. The islands have been identified as an Important Bird Area (IBA) by BirdLife International as they hold important seabird breeding colonies. They are the stronghold of the rare yellow-eyed penguin. Most of the world's population of white capped albatross breed here (some 90 –100,000) as do Gibson's wandering albatross, Southern royal albatross, light-mantled sooty albatross and antipodean albatross. The Auckland Islands are also the primary breeding location of the threatened New Zealand sea lion.



UNESCO

## EXPEDITION TO THE "GALÁPAGOS OF THE SOUTHERN OCEAN"

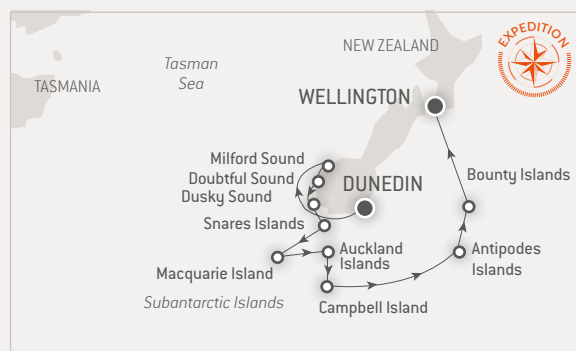
During your expedition, our expert team of naturalists and historians will guide you through these unique destinations. Remarkably, every destination we visit is a UNESCO World Heritage Site. These destinations are among the last unspoilt environments on Earth, they are home to a rich diversity of plants, seabirds and marine mammals, many of which are found nowhere else in the world. An estimated 170,000 people visit the Galápagos Islands every year, yet less than 1,200 get the opportunity to experience the unique habitats of the Subantarctic Islands. If you are looking for your next great adventure, sail aboard *L'Austral* for an amazing experience.



## DUNEDIN • WELLINGTON

*L'Austral* - From Jan. 05<sup>th</sup> to 21<sup>st</sup>, 2018

17 days / 16 nights



### DAY ITINERARY

- D 1 **Dunedin (New Zealand)**  
Embarkation from 16.00 to 17.00
- D 2 *At sea*
- D 3 **Milford Sound (New Zealand)**
- J4 **Doubtful sound (New Zealand)**  
**Dusky Sound (New Zealand)**
- D 5 **Snares Islands (New Zealand)**
- D 6 *At sea*
- D 7 **Macquarie Island - Anare (Australia)**
- D 8 **Macquarie Island - Sandy Bay (Australia)**
- D 9 *At sea*
- D 10 **Auckland Islands - Enderby Island (New Zealand)**
- D 11 **Auckland Islands - Enderby Island (New Zealand)**  
**Carnley Harbour (New Zealand)**  
**Musgrave Inlet (New Zealand)**
- D 12 **Campbell Island (New Zealand)**
- D 13 *At sea*
- D 14 **Antipodes Islands (New Zealand)**
- D 15 **Bounty Islands (New Zealand)**
- D 16 *At sea*
- D 17 **Wellington (New Zealand)**  
Disembarkation.

### PRE & POST CRUISE PROGRAMMES

(see page 50 to 53)

### PRICE LIST\*

#### CRUISE (16 nights on board)

Superior Stateroom	9 050 €	6 330 €
Deluxe Stateroom	10 770 €	7 530 €
Prestige Stateroom - Deck 4	12 070 €	8 440 €
Prestige Stateroom - Deck 5	12 670 €	8 860 €
Prestige Stateroom - Deck 6	13 300 €	9 310 €
Deluxe Suite	18 490 €	12 940 €
Prestige Suite - Deck 5	21 790 €	15 250 €
Prestige Suite - Deck 6	22 880 €	16 010 €
Owner Suite	29 750 €	

Individual stateroom rate

Consult us

Safety and port taxes

800 €

POYANT BONUS  
Up to  
-30%

(\*) for details, please refer to General Terms and Conditions and General Important Information, see pages 62 to 66.

# AUSTRALIAN GETAWAY

*Aboard L'Austral, set off to discover magnificent islets just off the East coast of Australia and enjoy the charms of a wild environment. Coral reefs, fine-sand beaches and multicoloured fish... start your Australian adventure in Sydney, against an azure blue backdrop.*



## SYDNEY

Between past and future... Nestled in the heart of one of the world's most beautiful harbours, Sydney is both trendy and classic, the object of many a fantasy. Composed of ocean and light, of sailors and businessmen, this city alone inspires many travellers to visit the antipodes. Located between the Pacific Ocean and the elegant silhouettes of the Blue Mountains, it perfectly reflects the Australian way of life: surfing beaches, quiet suburbs, skyscrapers, Victorian cottages and tropical gardens. Although a recent city, Sydney is filled with history and harmoniously blends old world charm and ultra-modern architecture, with its sail-shaped Opera House which sits alongside the historic district of The Rocks as the Harbour Bridge stretches across the bay. From the decks of *L'Austral*, do not miss the preparations for casting off in this vast natural inlet, recognised as one of the most beautiful in the world.

## SYDNEY • CAIRNS

Aboard L'Austral

From March 06<sup>th</sup> to 15<sup>th</sup>, 2018 (9 nights)



From € 2 620

## HIGHLIGHTS

- “Expedition” voyage, accompanied by our team of professional naturalist-guides.
- Take numerous trips in Zodiac® dinghies to get closer to nature, beaches and wildlife.
- UNESCO sites: Fraser Island, the world's largest sand island.
- Swimming and leisure time in preserved islands.
- Discover Sydney & the Blue Mountains.
- Varied marine life and coral reefs.



## FRASER ISLAND

Located off the East coast of Australia, Fraser Island is undoubtedly the largest sand island in the world. Its exceptionally beautiful and immaculate long beaches form elegant, uninterrupted curves along the edge of the ocean. Its strikingly coloured sand cliffs offer visitors a landscape of fresh-water dune lakes surrounded by tropical rainforest that tirelessly pushes the sand dunes towards the sea. Covered in eucalyptus trees, acacia and huge ferns, this protected site is home to hundreds of sea birds. From *L'Austral's* marina platform, our Zodiac® dinghies will take you to this island discovered long ago by the British explorer James Cook. It continues to hold undeniable appeal for adventurers in search of authenticity.



## CAIRNS

In the far North of Australia's Queensland coast, Cairns, a city of a thousand colours, is surrounded on one side by lush slopes covered in exotic rainforests and on the other by the turquoise blue waters of the Coral Sea. With its tropical atmosphere, mangrove-lined paths, hip inner suburbs and numerous historic sites, Cairns has a few surprises in store for you, combining both the advantages of a modern city and fabulous landscapes. Comfortably settled aboard *L'Austral's* outside decks, you will be able to watch as its numerous old colonial buildings, its picturesque port and the exceptional panorama surrounding the city appear before you. An idyllic setting at the heart of an unspoiled environment.



## LIZARD ISLAND

Lying off the coast of Queensland, Lizard Island is a true haven of peace. More than an island of idyllic shores edging the cobalt blue lagoon, its beauty also comes from the many white sandy beaches that give on to eucalyptus and acacia forests. Discovered in 1770, like so many other Australian islets, by Captain James Cook, this speck of confetti lost in the immensity of the Pacific Ocean is a renowned diving site, where gardens of coral reefs and multicoloured fish surrounding it. When your ship calls here, do not miss the chance to explore the terrestrial and aquatic marvels that this remote paradise offers you.



## SYDNEY • CAIRNS

*L'Austral* - From March 06<sup>th</sup> to 15<sup>th</sup>, 2018

10 days / 9 nights



### DAY ITINERARY

D 1	<b>Sydney (Australia)</b> Embarkation from 16.00 to 17.00
D 2	At sea
D 3	At sea
D 4	Fraser Island (Australia)
D 5	Lady Elliot Island (Australia)
D 6	Percy Islands (Australia)
D 7	Hardy Reef (Australia)
D 8	Sailing around Willis Island
D 9	Lizard Island (Australia)
D 10	<b>Cairns (Australia)</b> Disembarkation.

PRE & POST CRUISE PROGRAMMES  
(see page 50 to 53)

### PRICE LIST\*

CRUISE (9 nights on board)

Superior Stateroom	3 750 €	2 620 €
Deluxe Stateroom	4 050 €	2 830 €
Prestige Stateroom - Deck 4	4 290 €	3 000 €
Prestige Stateroom - Deck 5	4 460 €	3 120 €
Prestige Stateroom - Deck 6	4 640 €	3 240 €
Deluxe Suite	6 270 €	4 380 €
Prestige Suite - Deck 5	6 690 €	4 680 €
Prestige Suite - Deck 6	6 960 €	4 870 €
Owner Suite	9 050 €	

Individual stateroom rate

Consult us

Safety and port taxes

450 €

(\*) for details, please refer to General Terms and Conditions and General Important Information, see pages 62 to 66.



# FROM AUSTRALIA TO THE PHILIPPINES

*Set sail for a brand new Expedition cruise from Australia, “the Island Continent”, to the Philippines. From Cairns, known by its poetic nickname of the “city of a thousand colours”, L’Austral will sail North towards the Maluku Islands, with their dormant volcanoes and remarkable coral reefs, before charting a course for Malaysia, then Manila, the “Pearl of the East”.*



## THE MALUKU - BANDA NEIRA & KAI ISLANDS

Mountainous and volcanic islands that seem to have emerged from the sea, with craters that are still in activity, the Maluku are also known as the Spice Islands. It was indeed the trade in nutmeg and cloves that made the fortunes of the Malay sultans, then the Dutch settlers in the 16<sup>th</sup> century, and the fortresses of their colonial counters can still be visited today. The natural beauty of these islands is the reward for the traveller. Far from the usual tourist circuits, whether it be during your stop in Banda Neira or in Kai Islands, you will be able to visit these natural paradises, between brightly coloured coral reefs offering some of the best diving sites in the world, deserted beaches of immaculate sand edged with coconut palms, not forgetting the warm welcome of the inhabitants

## TANGKOKO & BUNAKEN

With their rugged coastline bathed by the clear waters of the Maluku and Celebes Seas, Sulawesi offers travellers the beauty of its landscapes, great ethnic and cultural diversity and unusual flora and fauna. During your cruise aboard L’Austral, enjoy a walk in the Tangkoko Nature Reserve. Located on the Northern peninsula, between sea and jungle, this reserve is home to a number of rare species such as the Celebes crested macaque, the Maleo bird and the famous Tarsier, one of the smallest primates in the world. Further on, the Bunaken Marine Park, created in 1991, offers more than 75,000 hectares of marine biodiversity, with coral gardens and underwater walls, where turtles, giant clams, sponges and tropical fish all live in harmony.

## CAIRNS • MANILA

Aboard L’Austral

From March 15<sup>th</sup> to 31<sup>st</sup>, 2018 (16 nights)



From € 3 940

## HIGHLIGHTS

- “Expedition” voyage accompanied by our professional naturalist-guides.
- Take numerous trips in Zodiac® dinghies to get closer to nature and wildlife.
- Discover Coron Island, listed at the UNESCO World Heritage.
- Discover the Maluku Islands, truly a paradise on earth, the original Spice Islands.
- Visit the Tangkoko National Park to look for the famous Tarsier, one of the tiniest primates in the world.
- Sandakan, a natural paradise and an encounter with the orang-utans, majestic primates with flamboyant hair.





## SANDAKAN

On leaving Sandakan, discover the Orang-utan Rehabilitation Centre. Located in the North-West of Borneo, the protected reserve of Kabili Sepilok covers some 43 ha. The Orang-utan is the only Asian representative of the great apes and this primate, whose Malaysian name means “man of the forest” is easily recognisable by its long arms and its flamboyant orange hair. Aside from mothers and their young, orang-utans are a solitary species that spend most of their life swinging from the tops of tall trees. Here, orphaned animals or those born in captivity are taught to live independently so that they can be returned to their natural habitat, which are always very moving moments. This reserve offers you the opportunity to admire these adorable creatures in their natural environment. Treat yourself to this thrilling encounter and a fascinating return to nature.



UNESCO

## CORON ISLAND

Located at the heart of the Philippines, Coron Island is like an emerald laid onto a turquoise backdrop, fringed with coconut palms and dark limestone cliffs. Considered by nature lovers to be a unique site, it also offers travellers exceptional underwater worlds, revealing the ghostly silhouettes of shipwrecked vessels, still intact and surrounded by colourful coral reefs. This sacred land listed as a UNESCO World Heritage Site, offers you its tropical rainforests, romantic waterfalls and its fine sandy beaches. During your stay here, do not miss the chance to discover Lake Kayangan, which legend says is the purest in the Philippines. Surrounded by cliffs colonised by lush vegetation, this lake has a unique beauty that invites you to relax, and take a trip in a Bangca, traditional outrigger sailing craft characteristic of these islands.



## CAIRNS • MANILA

L'Austral - From March 15<sup>th</sup> to 31<sup>st</sup>, 2018

17 days / 16 nights



### DAY ITINERARY

- D 1 **Cairns (Australia)**  
Embarkation from 16.00 to 17.00
- D 2 *At sea*
- D 3 **Cape York (Australia)**
- D 4 *At sea*
- D 5 **Asmat (West Papua, Indonesia)**
- D 6 *At sea*
- D 7 **Kai Islands (Maluku, Indonesia)**
- D 8 **Banda Neira (Maluku, Indonesia)**
- D 9 *At sea*
- D 10 **Palau Lihaga (North Sulawesi, Indonesia)**  
**Tangkoko (North Sulawesi, Indonesia)**
- D 11 **Pulau Saronde (Gorontalo, Indonesia)**
- D 12 *At sea*
- D 13 ❤️ **Sandakan (Sabah, Malaysia)**
- D 14 **Sandakan (Sabah, Malaysia)**
- D 15 *At sea*
- D 16 **Coron (Philippines)**
- D 17 **Manila (Philippines)**  
Disembarkation.

❤️ **OVERLAND:** Kinabatangan River from Sandakan.  
See page 53.

**PRE & POST CRUISE PROGRAMMES**  
(see page 50 to 53)

### PRICE LIST\*

**CRUISE** (16 nights on board)

Superior Stateroom	5 640 €	3 940 €
Deluxe Stateroom	6 090 €	4 260 €
Prestige Stateroom - Deck 4	6 450 €	4 510 €
Prestige Stateroom - Deck 5	6 710 €	4 690 €
Prestige Stateroom - Deck 6	6 980 €	4 880 €
Deluxe Suite	9 420 €	6 590 €
Prestige Suite - Deck 5	10 070 €	7 040 €
Prestige Suite - Deck 6	10 470 €	7 320 €
Owner Suite	13 610 €	

Individual stateroom rate

Consult us

Safety and port taxes

800 €

(\*) for details, please refer to General Terms and Conditions and General Important Information, see pages 62 to 66.

POYANT BONUS  
Up to  
-30%

# ISLANDS OF SOUTHERN JAPAN

Poetically called “the Land of the Rising Sun”, Japan is a country of age-old traditions, ancient temples and ultra-modern cities. In the South, it is home to numerous small islands and islets, each a tropical paradise. Aboard L’Austral, take an exceptional cruise from Manila to Kobe to discover these unspoiled and little-known archipelagos.



## MANILA • KOBE

Aboard L’Austral

From March 31<sup>st</sup> to April 09<sup>th</sup>, 2018 (9 nights)

From € 2 330

### HIGHLIGHTS

- UNESCO World Heritage Sites: Shuri Castle in Naha, lush islands of Okinawa, and Hiroshima and its sactuary.
- Manila, the bustling capital of the Philippines, combining modern skyscrapers and old districts.
- Discovering the Japanese islands and archipelagos in the country’s south-west, their crystal-clear waters and long beaches of golden sand.
- Possibility of diving and/or snorkelling on the Okinawa Islands.
- Presence of a specialised lecturer, chosen for his or her area of expertise.

## TAÏWAN - HUALIEN

Nicknamed “the beautiful island” by Portuguese sailors, 70% of the island of Taiwan is covered in lush, subtropical vegetation. When L’Austral stops in Hualien discover the stunning Taroko Gorge, one of the island’s must-see sites. This natural masterpiece, sculpted by the pure waters of the Liwu River, is known for its 1,200 metre-high marble cliffs, from which a unique panorama unfolds. During your stop here, discover the Eternal Spring Shrine, a complex clinging to the side of a mountain, made up of several small temples and overlooking a glistening waterfall. Then, along the Tunnel of Nine Turns, you will be able to admire the spectacular gorges which wind their way through deep canyons over some twenty kilometres.



UNESCO

## NAHA - SHURI CASTLE

Capital of Okinawa prefecture and the former capital of the Ryukyu Kingdom, Naha is a modern, active city with a rich history. Do not miss the visit to the famous Shuri Castle, built in the 14<sup>th</sup> century, a political, religious and cultural centre of the archipelago until 1879. Entirely renovated in the style of the original, it is today listed as a UNESCO World Heritage Site. Its architectural style is clearly different from that of the classic Japanese castles and presents a quite unique structure, a blend of Chinese and Japanese styles and the traditional art of Okinawa. The site also includes a number of monuments of great artistic interest, which will take you on a journey to the heart of this mysterious civilisation.



UNESCO

## OKINAWA ISLANDS

Often referred to as “the Japanese Hawaii”, the archipelago of the former Ryukyu Kingdom is a string of semi-tropical islands that reveals a very different side of Japan, far from the traditional image of cherry blossoms or Mount Fuji. The long beaches of white sand, the clear and sunny sky, and the crystalline water make Okinawa the ideal destination for anyone wanting a different experience of Japan. It is an unspoiled and beautiful paradise for nature lovers. During your cruise, *L'Austral* will forge a path through the many islands and islets, such as the Miyako Islands, where you will find sugar cane plantations lined with picture-postcard beaches, or Ishigaki Island, renowned for its exceptional diving.



## MANILA • KOBE

*L'Austral* - From March 31<sup>st</sup> to April 09<sup>th</sup>, 2018

10 days / 9 nights



### DAY ITINERARY

D 1	<b>Manila (Philippines)</b> Embarkation from 16.00 to 17.00
D 2	At sea
D 3	At sea
D 4	Hualien (Taiwan)
D 5	Ishigaki-jima (Japan)
D 6	Okinawa Islands (Japan)
D 7	Tokunoshima Island (Japan)
D 8	At sea
D 9	Hiroshima (Japan)
D 10	<b>Kobe (Japan)</b> Disembarkation.

PRE & POST CRUISE PROGRAMMES  
(see page 50 to 53)

UNESCO

## HIROSHIMA

Founded in 1589 by the feudal lord Terumoto Mori, Hiroshima has become a modern, lively and very active city. It is also the “City of Peace”, following the tragic event whose scars it secretly hides... This port of call offers the unique opportunity to a moving visit the Peace Memorial Park where you can visit the Memorial Museum, a UNESCO World Heritage site. Not far from here, anchored deep in the Inland Sea, discover the sacred island of Miyajima, home to both men and gods. It is the gateway to the sublime Shinto Shrine of Itsukushima, a UNESCO World Heritage Site whose entrance is guarded by a magnificent vermillion *torii*, which seems to float on the waters.

### PRICE LIST\*

CRUISE (9 nights on board)

Superior Stateroom	3 340 €	2 330 €
Deluxe Stateroom	3 610 €	2 520 €
Prestige Stateroom - Deck 4	3 830 €	2 680 €
Prestige Stateroom - Deck 5	3 980 €	2 780 €
Prestige Stateroom - Deck 6	4 140 €	2 890 €
Deluxe Suite	5 590 €	3 910 €
Prestige Suite - Deck 5	5 970 €	4 170 €
Prestige Suite - Deck 6	6 210 €	4 340 €
Owner Suite	8 070 €	

Individual stateroom rate

Consult us

Safety and port taxes

450 €

(\*) for details, please refer to General Terms and Conditions and General Important Information, see pages 62 to 66.

# THE BEST OF JAPAN

*Aboard L'Austral, Japan will reveal to you its powdery colours, a palette of gold and pastels that can be found everywhere, from the fragile paper umbrellas to the traditional tea houses. From one port of call to the next, the former Empire of Japan will unveil its ancestral culture, its secular temples, its samurai dwellings and its Zen gardens.*



## SAKAIMINATO - Samurai culture

Situated at the tip of the Yumigahama peninsula, Sakaiminato is a small Japanese city dating from the 20<sup>th</sup> century and covering some 28 km<sup>2</sup>. From this small city, protected from the waves by the Shimane peninsula opposite, set out to discover Medieval Japan and the former homes of the Samurais. Great feudal lords and valiant warriors, the Samurais built sumptuous homes and castles. During your time here, do not miss the chance to visit the famous 17<sup>th</sup> century Matsue Castle, an architectural marvel and the last structure of its type still standing on the Japanese coast, or the 300-year old Bukeyashiki Palace, a formidable legacy of the Golden Age of the Edo Dynasty.

## OSAKA

Discover Osaka, the most Japanese metropolis - a lively and multicultural city entirely focused on the future. Tucked away in a vast bay and offering extraordinary views over the neighbouring islands, the third biggest city of "the Empire of the Rising Sun" is known for its great modern and futuristic buildings, its many lively neighbourhoods where people like to linger in the evening. "Mokari makka?" - "How's business?". This is how people greet each other in Osaka, which, over the centuries, has successfully become Japan's leading national hub for trade and industry. During your visit, do not miss your chance to discover its port, which is completely open to the outside world; its famous castle, as well as Japan's most ancient Buddhist temple, where each day at sunset numerous followers come to pray.

## OSAKA • MAIZURU

Aboard L'Austral

From April 25<sup>th</sup> to May 03<sup>rd</sup>, 2018 (8 nights)

## MAIZURU • OSAKA

Aboard L'Austral

From May 03<sup>rd</sup> to 11<sup>th</sup>, 2018 (8 nights)

From € 3 580

## HIGHLIGHTS

- UNESCO World Heritage Sites: The Miyajima Sanctuary and its vermillion Torii, the Bulguska temple and its 7 national treasures; the Hiroshima Peace Memorial Museum.
- Sakaiminato and Matsue or medieval Japan and the former homes of the Samurais.
- Discovering Okayama, a former feudal domain with a surprising cultural heritage, and its famous "black castle".
- Discovering Japan's culture and ancestral traditions.
- Lecturer on board, specialised in art & Japanese history.





## KAGOSHIMA

In Kagoshima Bay, not far from the Sakurajima volcano, lies a sun-kissed city and a horizon of the most astonishing palette of blues: Kagoshima. This charming ancient fortified town lies in the South of Kyushu Island and is known as the "Naples of the East" because of its abundant sunshine, blue skies and the beauty of the surrounding Ocean. Mount Sakurajima was once an island in its own right, but the eruption of the volcano of the same name caused its landmass to join up with Kyushu when the lava filled in the strait that separated them. This still active volcano dominates the city and has become the symbol of it.



## GEISHA CULTURE

If there is one last enduring myth, it is that of the graceful Geisha. They first appeared around 1660 during the Edo period and quickly became appreciated for their education and refinement in Art and their elegance. Their name comes from the Japanese words Gei (art) and Sha (the person), and they were specially educated in the entertainment arts, such as singing, dancing, poetry, traditional musical instruments, the tea ceremony or conversation, and were used to provide entertainment during important meetings and dinners. The sumptuous handcrafted and brightly coloured kimonos, "split peach" chignon and immaculate white face of the Geisha are distinctions that make this icon of femininity truly a living work of art. As professionals in the "Art de Vivre", Geishas play an authentic cultural role and still represent one of the liveliest aspects of Japanese tradition.

## OSAKA • MAIZURU MAIZURU • OSAKA

L'Austral - From April 25<sup>th</sup> to May 03<sup>rd</sup>, 2018

L'Austral - From May 03<sup>rd</sup> to 11<sup>th</sup>, 2018

9 days / 8 nights



### DAY ITINERARY

- D 1 **Osaka (Japan)**  
Embarkation from 16.00 to 17.00
- D 2 Tamano - Okayama (Japan)
- D 3 Hiroshima (Japan)
- J4 Uwajima (Japan)
- D 5 Kagoshima (Japan)
- D 6 Nagasaki (Japan)
- D 7 Busan (South Korea)
- D 8 Sakaiminato (Japan)
- D 9 **Maizuru (Japan)**  
Disembarkation.

THE MAY 03<sup>RD</sup> DEPARTURE OPERATES IN REVERSE

PRE & POST CRUISE PROGRAMMES  
(see page 50 to 53)

### PRICE LIST\*

#### CRUISES (8 nights on board)

Superior Stateroom	5 120 €	3 580 €
Deluxe Stateroom	5 530 €	3 870 €
Prestige Stateroom - Deck 4	5 970 €	4 170 €
Prestige Stateroom - Deck 5	6 450 €	4 510 €
Prestige Stateroom - Deck 6	6 960 €	4 870 €
Deluxe Suite	9 400 €	6 580 €
Prestige Suite - Deck 5	12 900 €	9 030 €
Prestige Suite - Deck 6	13 930 €	9 750 €
Owner Suite	18 110 €	
Individual stateroom rate		Consult us
Safety and port taxes		400 €

PONANT BONUS  
Up to  
-30%

(\*) for details, please refer to General Terms and Conditions and General Important Information, see pages 62 to 66.

# TRADITIONS OF JAPAN

*Modernity and tradition... imperial mysteries... is there any country more fascinating than Japan to a Western traveller? The country of the Shogun warriors has managed to preserve its identity. It offers you the splendour of its landscapes and its Shinto sanctuaries, where time seems to stand still.*



## JAPAN

Long cloaked in mystery as a result of being autarchic and insular, Japanese civilisation has followed a truly unique path. With its 3,900 small islands and its 4 main isles, the Japanese archipelago offers visitors an unusual palette of landscapes and cultures and a rich medley of traditions, with secular temples and quiet sanctuaries co-existing alongside the futuristic technology of its bustling cities. In the Land of the Rising Sun, the pace is set by both the frenetic energy of the country's major cities with their unique architecture, and the serenity of its gardens, whose secrets are guarded by majestic scarlet "torii". Eager for progress and enriched by its medieval past, the former Empire of Japan has an exceptionally refined culture.

## OSAKA • OSAKA

Aboard L'Austral

From May 18<sup>th</sup> to 25<sup>th</sup>, 2018 (7 nights)

From € 2 740

## HIGHLIGHTS

- UNESCO World Heritage Sites: The Miyajima Sanctuary and its vermillion Torii, the Bulguska temple and its 7 national treasures; the Hiroshima Peace Memorial Museum, Hagi and its old houses, Gyeongju and its vestiges.
- Sakaiminato and Matsue: the former homes of the Samurai, Osaka and the oldest Buddhist temple in Japan, Okayama and its feudal city, Beppu, its hot springs and the stone Buddhas.
- Discovering Japan's culture and ancestral traditions.
- Lecturer on board, specialised in art & Japanese history.



UNESCO

## ULSAN - GYEONGJU

Ulsan will be your gateway to the former capital of the Silla dynasty, Gyeongju, and its two UNESCO World Heritage Sites, precious vestiges of the Korean kingdom of old. You will discover the Seokguram Grotto, one of the most beautiful sanctuaries dedicated to Buddha, built in the 8<sup>th</sup> century on the slopes of Mount Toham. Surrounded by deities, the imposing statue of Buddha serenely contemplates the wooded hills and the horizon beyond the Sea of Japan. Wonderfully preserved, the sculpture has retained its original appearance and this gives the place real spiritual value. Further on, you will visit the Bulguksa Temple, a World Heritage treasure and one of the most beautiful vestiges of Gyeongju's golden age, a perfect demonstration of the skill of Korean architects at the time of the old kingdom. This Korean port of call is sure to enchant you.



## TAMANO - OKAYAMA

Upon leaving Tamano Port, you will set off to discover Okayama, a former 16<sup>th</sup> century feudal domain, now a small Japanese city with a unique cultural heritage. During your stop here, do not miss the visit to its famous Korakuen Gardens, one of Japan's three must-see landscape gardens. Created during the prestigious Edo period, it greets visitors with vast lawns edged by tranquil lakes, gracious copses, and former tea houses. Further on, succumb to the charms of Kurashiki and its historic district, lined with wonderfully well preserved white houses with black ceramic roof tiles which stand along the river that was once used for conveying rice, sugar and textiles in the days when the city was a thriving port.



## BEPPU

A favourite destination for the Japanese, Beppu is now famous throughout the Japanese archipelago thanks to its *onsen* - volcanic hot springs in which people immerse themselves to relax with family or friends. From Beppu, you will set off to discover a lush, peaceful valley in which sit 60 majestic stone Buddhas carved out of the cliff face between the 12<sup>th</sup> and 14<sup>th</sup> centuries. Exuding a soothing air of serenity, the Mangetsuji site seems to have drifted off to sleep in the heart of a dense bamboo forest surrounded by rice fields. Recognised as a National Treasure of Japan, this set of sacred sculptures offers travellers a unique, wonderful experience.



## OSAKA • OSAKA

L'Austral - From May 18<sup>th</sup> to 25<sup>th</sup>, 2018

8 days / 7 nights



### DAY ITINERARY

- D 1 **Osaka (Japan)**  
Embarkation from 17.00 to 18.00
- D 2 **Beppu (Japan)**
- D 3 **Hiroshima (Japan)**
- D 4 **Ulsan (South Korea)**
- D 5 **Sakaiminato (Japan)**
- D 6 **Hagi (Japan)**
- D 7 **Tamano (Japan)**
- D 8 **Osaka (Japan)**  
Disembarkation.

### PRE & POST CRUISE PROGRAMMES

(see page 50 to 53)

### PRICE LIST\*

#### CRUISE (7 nights on board)

Superior Stateroom	3 920 €	2 740 €
Deluxe Stateroom	4 230 €	2 960 €
Prestige Stateroom - Deck 4	4 570 €	3 190 €
Prestige Stateroom - Deck 5	4 940 €	3 450 €
Prestige Stateroom - Deck 6	5 330 €	3 730 €
Deluxe Suite	7 200 €	5 040 €
Prestige Suite - Deck 5	9 870 €	6 900 €
Prestige Suite - Deck 6	10 660 €	7 460 €
Owner Suite	13 860 €	

Individual stateroom rate

Consult us

Safety and port taxes

350 €



(\*) for details, please refer to General Terms and Conditions and General Important Information, see pages 62 to 66.

# DESTINATION HIGHLIGHTS in Asia

Please find below samples of the optional destination highlights, exclusively sold on board. Full tour program is available on our website [www.ponant.com](http://www.ponant.com) 12 months prior to your cruise. Final program will be sent with your cruise documents.

PORT	COUNTRY	DESTINATION HIGHLIGHTS
AGATS	INDONESIA	Welcome by a local tribe on board their traditional canoes and war ceremonies.
BANDA ACEH	INDONESIA	Discover Banda Aceh, located on the Northwestern part of Sumatra Island. Visit the Tsunami Museum and the Baiturrahman mosque, paved entirely with white marble.
BANDA NEIRA	INDONESIA	At Banda Neira, the global centre for nutmeg trade, visit Fort Nassau and Fort Belgica, the Governor's house and the VOC church.
BELAWAN	INDONESIA	From this port of call, discover the exceptional Gulung Leuser National Park and Bukit Lawang National Park. In the heart of this peaceful nature and wildlife sanctuary, visit the Orangutan Rehabilitation Centre.
BENGKULU	INDONESIA	Founded in 1685 by the British East India Company, Bengkulu was Sir Thomas Stamford Raffles' base in Indonesia. During your stop, set off on a cultural and historical visit of the town, including the famous Fort Malbourough.
BEPPU	JAPAN	Visit the Yamako Usuki Art Museum which features a collection Inaba documents and lacquer wares painted in gold and silver powder. Then visit the Usuki Stone Buddha, these stone images were sculptured from the Heian to the Kamakura eras.
BUSAN	SOUTH KOREA	Visit the Buddhist temple Haedong Yonggungsa and the renowned Jagalchi Fishery Market, the largest sea fruit market in Korea.
CAPE YORK	AUSTRALIA	An outing in Zodiac® dinghies will drop you on the beach, from where an easy walk leads you to the Northernmost point of the Australian mainland. Cape York is the place where the Pacific and Indian Oceans meet, and remains wild and well-preserved.
HAGI	JAPAN	Discover Hagi, its famous castle and ancient houses, listed as UNESCO culture site. Visit the Tokoiji temple, and learn about the Mouri clan which ruled the town in the Edo era.
HIROSHIMA	JAPAN	Stroll around the charming island of Miyajima to discover the Shinto sanctuary of Itsukushima and its famous vermillion torii or visit the Hiroshima Peace Memorial Park and the Atomic Bomb Dome.
HUALIEN	TAIWAN	Discover Taroko National Park, a 19-kilometre long canyon, and its gorges, a breathtaking spectacle of craggy rocks and cascading waters.
KAGOSHIMA	JAPAN	Discover the majestic and imposing Mount Sakujima, one of the most active volcanoes in Japan, then head for Chiran, "Little Kyoto" renowned for its marvellous well-preserved Samurai houses.
KOMODO	INDONESIA	See the famous Komodo Dragons in their natural environment at the Komodo National Park.
KRAKATOA	INDONESIA	Discover the active volcano of Anak Krakatau in the Sunda Strait between Java and Sumatra. Enjoy splendid viewpoints of this huge volcanic cone from your Zodiac® dinghie.
LARANTUKA	INDONESIA	Visit a traditional village and spend time with the local people.
MALACCA	MALAYSIA	During your visit, see the Dutch and Portuguese heritage, old town, Dutch Square with its majestic Stadthuys (townhall), also visit the "Baba Nyonya" culture museum.
MERGUI ARCHIPELAGO	MYANMAR	Aboard a local boat, discover the Mergui archipelago. Enjoy the isolated islands of this seldom visited archipelago and swim and snorkel in the crystal-clear waters.
NAGASAKI	JAPAN	Discover Ground Zero, the Atomic Bomb Museum and Nagasaki Museum of History and Culture and its large Fine Art Collection.





PORT	COUNTRY	DESTINATION HIGHLIGHTS
<b>PADANG</b>	<b>INDONESIA</b>	Set off to an exceptional visit of Padang, the capital of the West Sumatra province and the cradle of the unique Minangkabau culture. After a discovery of the main monuments, head for Bukit Tinggi Highlands to admire some outstanding views.
<b>PENANG</b>	<b>MALAYSIA</b>	Witness the Peranakan history and culture and visit the Blue Mansion (where the movie Indochine with Catherine Deneuve was filmed)
<b>PHANG NGA ISLANDS</b>	<b>THAILAND</b>	Located in the Southern part of Thailand, the unparalleled scenery of Phang Nga Bay defies description. The dramatic ochre and amber – hued limestone outcrops contrast vividly with the startling blue of the ocean. Aboard local canoes you will discover these islands, stalactite caves and tunnels.
<b>PINK BEACH</b>	<b>INDONESIA</b>	Aboard one of our Zodiac® dinghies, you will come ashore on Pink Beach in the Komodo National Park. Take time to relax on the beautiful pink sand and admire the spectacular fringing coral reef.
<b>PORT KLANG</b>	<b>MALAYSIA</b>	Port Klang is your gateway to Kuala Lumpur, capital of Malaysia, and former royal city of the Selangor Sultans. Visit the National Museum, Petronas Towers and Independence Square with its historical and colonial buildings
<b>PROBOLINGGO</b>	<b>INDONESIA</b>	In the heart of Java Island, set off on an early morning trip to Mount Bromo for views across the ash plain, the Caldeira, and to the active crater.
<b>PULAU NIAS</b>	<b>INDONESIA</b>	Discover Pulau Nias and its unique architecture and stone sculptures. Witness a Stone Jumping Ceremony, which was formerly a ritual to prepare for war and fight.
<b>PULAU SIMEULU</b>	<b>INDONESIA</b>	Swimming and snorkelling over fringing reefs to discover a magnificent underwater world.
<b>SAKAIMINATO</b>	<b>JAPAN</b>	Visit Izumo and its sacred temple, one of the oldest shrines in Japan, or the Matsue Castle and the homes of the Bukeyashiki Samurais.
<b>SINGAPORE</b>	<b>SINGAPORE</b>	Discover different districts of this cosmopolite and vibrant city such as Little India, China Town and Gardens by the Bay or visit the Asian Civilization Museum.
<b>SUMENEP</b>	<b>INDONESIA</b>	During your port of call on the island of Madura, discover Semenep, a small Indonesian town with ancient Hindu culture. After a pleasant stroll to admire the many colonial houses, you will attend a "Karapan Sapi", a local bull racing.
<b>TAMANO (OKAYAMA)</b>	<b>JAPAN</b>	Visit Kurashiki city developed along the Kurashiki river and the magnificent Korakuen gardens.
<b>ULSAN</b>	<b>SOUTH KOREA</b>	Located on the slopes of Mt. Tohamsan, discover the Bulguksa Temple, a monument to Silla architectural skill and the depth of their Buddhist faith. Most of temple's wooden structures have been rebuilt over the centuries, but its stone bridges, stairways and pagodas are original.
<b>UWAJIMA</b>	<b>JAPAN</b>	Visit the old town of Uchiko, vestige of a traditional rural Japan and the Taga fertility shrine.
<b>YAKUSHIMA ISLAND</b>	<b>JAPAN</b>	Discover the UNESCO World Heritage site of Yakushima sheltering a rich flora including ancient specimens of the sugi (Japanese red cedar).
<b>YANGON</b>	<b>MYANMAR</b>	Discover Yangon, current capital of Myanmar, home town of Aung San Su Kyi. Visit the Shwedagon Pagoda, which enshrines strands of Buddha's hair and other holy relics. It is the most sacred and impressive Buddhist site for Burmese people.

# DESTINATION HIGHLIGHTS in Oceania

Please find below samples of the optional destination highlights, exclusively sold on board. Full tour program is available on our website [www.ponant.com](http://www.ponant.com) 12 months prior to your cruise. Final program will be sent with your cruise documents.

PORT	COUNTRY	DESTINATION HIGHLIGHTS
AKAROA	NEW ZEALAND	Visit a traditional sheep farm with a demonstration of sheep shearing and sheepdogs performance.
ALOTAU	PAPUA - NEW GUINEA	Visit the site of the first land defeat of the Japanese in World War II. Visit the bustling local market for an insight into daily life in this modern town in Papua New Guinea.
ANTIPODES	NEW ZEALAND	Enjoy a Zodiac® tour to view the wildlife and scenery (no landings). Endemic species include Erect Crested Penguins, Antipodean Albatross, Antipodes Island parakeet, surrounded by long black-sand beaches and high volcanic peaks.
ATUONA	MARQUESAS ISLANDS	Discover Paul Gauguin and Jacques Brel's resting places, as well as two museums devoted to their work.
AUKENA	GAMBIER ISLAND	Visit a pearl farm.
BAY OF ISLANDS - WAITANGI	NEW ZEALAND	Discover the Waitangi Treaty Grounds, the Birthplace of New Zealand, then have a privileged insight into Maori culture through dances and songs.
BORA BORA	FRENCH POLYNESIA	Snorkel in the lagoon's crystal-clear waters to observe manta rays and multicoloured fish or discover the island from the sky with an exceptional helicopter flight.
BOUNTY ISLANDS	NEW ZEALAND	Enjoy a Zodiac® tour to view the wildlife and scenery (no landings). Endemic species include Erect Crested Penguins, Salvins Mollymawks, Bounty Island Shags.
CAMPBELL	NEW ZEALAND	Take a walk to the Coll Lyell Saddle to view the fields of Megaherbs and Nesting Royal Albatross.
DOUBTFUL SOUND	NEW ZEALAND	Scenic ship based cruising to enjoy the spectacular scenery of Fjordland National Park.
DUSKY SOUND	NEW ZEALAND	Zodiac® cruise in search of wildlife (fur seals) and the scenery around Astronomer's point, notably Gondwanan temperate forest.
FRASER ISLAND	AUSTRALIA	Visit the pristine Lake Mackenzie, Satinay Trees at Pile Valley and the rainforest on the world's largest sand island, listed as UNESCO World Heritage site.
HANAVAVE	FATU HIVA, MARQUESAS ISLANDS	From the traditional village of Hanavave, take a panoramic tour of Omoa, a village where nature is wild and abundant.
HANGA ROA	CHILE EASTER ISLAND	Discover the impressive Rano Raruka volcano or the magnificent archaeological site of Ahu Tahai and its monumental statues, the enigmatic Moais.
HARDY REEF	AUSTRALIA	Enjoy a morning snorkelling on coral reef.
HATIHEU	MARQUESAS ISLANDS	Enjoy demonstrations and learn about costumes, weaving, coconut husking, cooking and carving. A local lunch kaikai will be served accompanied by dance, songs, chants, legends and music of Nuku Hiva providing a relaxed and enjoyable atmosphere.
HILO	HAWAII	Discover the Akaka Falls, the tallest interrupted waterfall in the state of Hawaii, and the Nani Maui botanic gardens, or visit the impressive Kilauea volcano in the Hawaii Volcanoes Park.
HUAHINE	FRENCH POLYNESIA	Discover the fascinating sites of the island in a snorkel or safari adventure or hike along Mata'irea Hill to the archaeological sites of the village of Maeva.
KAI ISLAND	INDONESIA	Enjoy some leisure time on this deserted picture postcard tropical island with beautiful fringing coral reef. Swim and snorkel among a multitude of multicoloured fish.



PORT	COUNTRY	DESTINATION HIGHLIGHTS
LIZARD ISLAND	AUSTRALIA	Enjoy beautiful white sand beaches, walking trails to Cook's viewpoint and the Blue Lagoon as well as good snorkelling over the famous "Clam Gardens".
MACQUARIE ISLANDS	AUSTRALIA	Visit the Research Station and Sandy Bay to view thousands of penguins and elephant seals, including King penguins, Royal penguins, Gentoo penguins and Rockhopper penguins.
MOOREA	FRENCH POLYNESIA	Discover Moorea deep valleys and mountains by 4-wheel drive and observe wild dolphins.
PARADISE LAGOON	VANUATU	Discover the beautiful fringing reefs of Paradise Lagoon and embark on a journey to the famed blue holes of Vanuatu.
PUERTO PRINCESA	THE PHILIPPINES	Discover the Underground River of Puerto Princesa, listed as UNESCO World Heritage site.
RABAU	PAPUA - NEW GUINEA	Discover the active volcano Mount TAVURVUR, famous World War II site, before seeing the remarkable Baining fire dancers.
RANGIROA	FRENCH POLYNESIA	From Rangiroa, discover turquoise lagoons by snorkelling or on a glassbottom boat.
RIKITEA	GAMBIER ISLAND	Explore the village of Rikitea on your own, see the old convent and the church or visit a pearl farm.
SANDAKAN	MALAYSIA	From Sandakan, encounter the Orangutans and the Proboscis monkeys of Borneo.
SANTA ANA	SOLOMON ISLANDS	Discover traditional village life at Santa Ana and attend cultural performances.
SNARES	NEW ZEALAND	Enjoy a Zodiac® cruise in search of wildlife and the scenery (no landings). Endemic species include the Snares crested Penguin, and abundant species of albatross and other endemic birds.
TANGKOKO NATIONAL PARK	INDONESIA	Visit Tangkoko National Park in search of the Crested Black Macaque, Spectral tarsier and various bird species.
TANNA	VANUATU	Enjoy a traditional welcome by the Cargo Cult Choir and a visit of Port Resolution. Then discover the Mount Yasur volcano and its lava fields by local pick-up.
TAURANGA	NEW ZEALAND	Hike to the heart of the Wai-O-Tapu Thermal Wonderland with geysers and the surprising geothermal feature of Champagne Pool.
TRITON BAY	INDONESIA	An unforgettable Zodiac® tour through the scenic karst islands of Triton Bay. Enjoy the isolated beaches of this idyllic location and swim in the warm waters of the Pacific Ocean.
TROBRIAND ISLANDS	PAPUA - NEW GUINEA	Enjoy a traditional welcome and dance performance during your visit of the village.
TUFI	PAPUA - NEW GUINEA	After a traditional welcome and cultural performance, paddle up an ancient mangrove river in a traditional outrigger canoe.
VANIKORO	SOLOMON ISLANDS	Visit the site of the lost voyage of La Perouse which ended in a wreckage in 1788, and enjoy a traditional welcome and cultural performance.
WELLINGTON	NEW ZEALAND	From Wellington, visit the innovative and interactive Museum of New Zealand "Te Papa Tongarewa".



# PRE & POST CRUISE PROGRAMMES

## OPTIONAL PROGRAMMES

We invite you to enhance your cruise and extend your trip with carefully designed, high-quality programmes, organised to tie in with the flights selected by PONANT. These are group excursions, and are available either immediately before or after your cruise; they must be booked before departure.

### MYANMAR - YANGON

#### Mandalay & Bagan (4 days/3 nights)

This magnificent program will allow you to go deeper to the heart of the ancestral traditions of fascinating Myanmar and discover sites that are still little-known.

You will be greeted at Yangon airport and taken to your hotel for an afternoon of relaxation, then the next day you will fly to **Bagan**. On the banks of the Irrawaddy River, the **Bagan Plains** are scattered with some **2,000 pagodas**, their spires soaring towards the sky. Built between the 11<sup>th</sup> and the 14<sup>th</sup> centuries, gilded in fine gold, these silent testimonies of a time when Bagan was centre of the teachings of Buddha offer travellers an impression of eternity. After visiting some of the most beautiful temples and pagodas in Bagan, as well as its **archeological museum**, you will have the privileged and magical experience of watching the **sunset** from the Pyat That Gyi temple, seeing the countless secular structures bathed in glittering light as the mist rises from the river.

The next day you will fly to **Mandalay**, the spiritual capital of the former kingdom. The old Royal City of Amarapura boast some unique vestiges including the longest teak bridge in the world, the **U Bein Bridge**, a wooden structure spanning more than 2 km. You will then visit **Mahagandayone**, the largest monastery in Myanmar, and the **Mahamuni Pagoda**, which is home to a revered statue of Buddha, without forgetting a trip to a workshop where craftsmen beat gold into fine sheets. At daybreak the next morning, you will fly over Mandalay in a **hot air balloon** (optional flight), one of the unforgettable moments of your programme, before taking your return flight to Yangon. You will also have the chance to see the reclining **Buddha of Chaukhtatgyi** and the **Shwedagon Pagoda** before joining your ship.

**PRE CRUISE / L'AUSTRAL: YANGON • BALI - NOVEMBER 09<sup>TH</sup> 2017**



For more information on the detailed programmes and prices,  
please consult [www.ponant.com](http://www.ponant.com) or call your travel agent.  
Flights selected by Ponant will be confirmed 10 months prior to your cruise.

## VIETNAM - HO CHI MINH CITY

### The imperial city of Angkor and visit of Saigon (4 days/4 nights)

After being greeted at the airport and spending a night in a five-star hotel on the banks of the Saigon River, you will spend the day discovering the museums, palaces, temples and markets of the bustling city of **Ho-Chi-Minh**, formerly Saigon. The following day you will fly to **Siem Reap** in Cambodia to discover the **site of Angkor**, a UNESCO World Heritage Site. You will visit the **Bayon** mountain temple, the **Terrace of the Elephants**, **Ta Prohm temple**, known as the temple of the jungle and **Banteay Srey**, without forgetting the famous temple of **Angkor Vat**. Weather permitting, you will watch the **sun set** over Angkor from a prime vantage point. During your stay, you will also discover the oldest temples in Angkor, the Roluos group: Preah Ko, Bakong and Lolei. You will visit the **museum of Angkor** which houses some of the site's most beautiful sculptures. Your excursion will conclude with a stroll along the **Tonlé Sap Lake** with its floating villages. Before you take your return flight to Ho-Chi-Minh, you will have time to visit a craft centre and Siem Reap Old Market.

**PRE CRUISE / L'AUSTRAL: HO CHI MINH • YANGON - OCTOBER 28<sup>TH</sup> 2017**



## JAPAN - KOBE

### Kyoto and Nara, imperial capitals (3 days/2 nights)

You will set out to discover the natural and architectural treasures of two of Japan's former capitals, **Kyoto** and **Nara**. Your trip will start at the **Tenryuji temple**, surrounded by a Japanese garden, in the region of Arashiyama. In Kyoto, admire the **Golden Pavilion of Kinkaku-ji**, a gilded Buddhist temple reflected in a lake, and enjoy the peacefulness of the rock and sand Zen garden of the Ryoanji temple. After a night in Kyoto, you will visit the **Kiyomizu temple**, reputed for its terrace, which offers a superb view over Kyoto and its surroundings. You will take part in a tea ceremony and an initiation into Zen meditation, then will visit **Nijo castle**, where the entrance into the Meiji period was proclaimed, the **Nanzenji temple**, a Zen Buddhist temple and finally, the **Hojo garden**, whose symbolism is inspired by Chinese mythology. During a Kaiseki dinner, accompanied by traditional Japanese music, admire the dances interpreted by a maiko, an apprentice geisha. The following day, discover **Nara** and the **Todaiji temple**, the biggest wooden construction in the world, home to the **largest Buddha in Japan**, and the **Kasuga Taisha**, the vermilion Shinto shrine, famous for its many stone and bronze lanterns.

**POST CRUISE / L'AUSTRAL: MANILA • KOBE - MARCH 31<sup>ST</sup> 2018**

## INDONESIA - BALI

### The cultural heritage of Bali (2 days/2 nights)

After spending the night and the following morning relaxing in your hotel in Nusa Dua, you will set out on an excursion that will first take you north to discover the famous **Pura Tanah Lot**, built on a **natural sea rock**. This fascinating temple stands like a lighthouse and is dedicated to the guardian Spirits of the sea. Next you will head to **Tegallalang** to admire the magnificent **terraced paddy fields**, the cascading lush vegetation like veritable terrestrial sculptures. The following day, you will take a mountain road edged by paddy fields clinging to the slopes of **Mount Agung** to reach **Pura Besakih**, the “**mother temple**”. A sacred site and the largest Hindu temple on the island, Besakih is a major pilgrimage destination. You will have lunch in a local restaurant before visiting the **Pura Tirta Empul temple**, built around the **sacred source of Tampak Siring**. You will join your ship in the port of Benoa.

PRE CRUISE / L'Austral: BALI • CAIRNS - NOVEMBER 24<sup>TH</sup> 2017



## PHILIPPINES - MANILA

### Discover historical Manila (1 day/1 night)

Set out to discover **Manila's historic past**. At the heart of the old town, *Intramuros* as the Filipinos say, you will visit Casa Manila, a perfect example of a Spanish colonial style dwelling, furnished with period items. Its **museum** is home to an astonishing collection of works of art from the colonial period. Then you will discover **Fort Santiago**, which was used to defend the city against pirates and invaders. This fort is one of the most important historical sites in Manila; many heroes of Filipino history were imprisoned here, including José Rizal. The memory of this doctor, poet and linguist is particularly present at the **Rizal Park**, which includes official monuments, museums and the national library.

PRE CRUISE / L'Austral: MANILA • KOBE - MARCH 31<sup>ST</sup> 2018



## AUSTRALIA - CAIRNS & SYDNEY

From Cairns, at the edge of Australia's Tropical Rainforest to Sydney: the opera and the Blue Mountains (3 days/2 nights)

After an unforgettable **journey in a cable car over the tropical rainforest** in Cairns, then a visit to the village of **Kuranda**, you will fly to Sydney and its stunning harbour. The next day, take a road trip into the **Blue Mountains**, a spectacularly beautiful region combining a plateau and steep gorges, and a UNESCO World Heritage Site. You will visit the **Scenic World** ecological complex there, then, after a pause at Echo Point to admire the emblematic **Three Sisters Mountains**, you will head to the **Featherdale Wildlife Park**, to see kangaroos and koala bears. The following day you will discover Sydney's emblematic monuments: the **Opera House**, the **Harbour Bridge** and **Manly Beach**, before heading to the airport for your return flight.

POST CRUISE / L'Austral: BALI • CAIRNS - NOVEMBER 24<sup>TH</sup> 2017

## NEW ZEALAND - DUNEDIN

Dunedin, the eco-capital of New Zealand and the Otago peninsula (1 day/1 night)

From Dunedin, you will discover the **Otago peninsula** and the **Natures Wonders reserve**, one of the best examples of a responsible eco-tourism project in the world. You will be able to admire the **penguins** and **fur seals** living in their preserved natural habitat, inhabiting the beaches without fear of humans. Then you will visit **Larnach castle**, an imposing neo-gothic residence surrounded by magnificent gardens, which are considered to be among the five most beautiful in New Zealand. And then, after a panoramic visit to **Dunedin**, you will rejoin your hotel. The next day, you will travel to the airport and take your return flight, with a change in Christchurch.

POST CRUISE / L'Austral: NOUMEA • DUNEDIN - DECEMBER 23<sup>RD</sup> 2017

For more information on the detailed programmes and prices, please consult [www.ponant.com](http://www.ponant.com) or call your travel agent.  
Flights selected by Ponant will be confirmed 10 months prior to your cruise.



## HAWAII - HONOLULU

### Honolulu, from the Hawaiian monarchs to the battles of the 20<sup>th</sup> century *(2 days/2 nights)*

You will stay in an historic hotel on the island, looking out over the famous **Waikiki beach**. During your break, you will discover the rich cultural heritage of the Pacific islands, with a visit to the **Bishop museum** and the **Iolani Palace**, the official residence of the last monarchs of the Kingdom of Hawaii. A panoramic tour will take in the **historic monuments** of downtown Honolulu, the Kawaiahao church, the State Capitol, seat of the government, and will take you to the **Diamond Head Lookout**, a volcanic crater offering spectacular views. Then you will be thrust into the dramatic history of the 20<sup>th</sup> century, with a visit to the **Pearl Harbor** Visitor Center, the USS Arizona Memorial, and the National Memorial Center of the Pacific, also known as **Punchbowl Cemetery**.

**PRE CRUISE / LE BORÉAL: HONOLULU • PAPEETE - OCT. 05<sup>TH</sup> 2017**

## TAHITI - PAPEETE

### Escapade in Bora Bora, pearl of the Pacific *(2 days/2 nights)*

Take a flight to the Pearl of the Pacific for an idyllic break. **Bora Bora**, a volcano lying on one of the most beautiful lagoons in the world, creating an infinite palette of blues, from light to dark. You will spend a night in an **overwater bungalow** on stilts, surrounded by the turquoise waters. The next day you will sail on the Bora Bora lagoon and have lunch on a coral sand islet, or motu, before returning to **Papeete**, to the fenua (the land) as the Polynesians call the island of Tahiti. You will be free to enjoy your last evening, before being taken to the airport the next morning for your return flight.

**POST CRUISE / LE BORÉAL: HONOLULU • PAPEETE - OCT. 05<sup>TH</sup> 2017**

# PRE-BOOKABLE TOURS

**Reservation and payment of these excursions must be made when booking your cruise or at least 60 days prior to your departure.**

Prices: please consult us. Full tour program is available on our website [www.ponant.com](http://www.ponant.com) 12 months prior to your cruise. A minimum of participants is required to confirm these programmes.

## HAWAII - HILO



### Circle of Fire by helicopter *(2 h 30 including a 35-minute flight)*

Fly over the most geologically active environment on earth during an **unforgettable Airbus A-star helicopter flight**. The tour will emphasize the most current areas of volcanic activity. You will search out **lava flows** and view **black-sand beaches**, lush **tropical rain forests** and small **cascading waterfalls** while being told with fascinating facts about the **history and culture of Hawaii**. Tour routes and sights visited may vary according to wind and weather conditions, and volcanic activity that varies hourly. Enjoy a powerful learning experience!

## MALAYSIA - SANDAKAN



### Along the Kinabatangan River *(2 days / 1 night)*

Often described as "Malaysia's gift to the earth", the meanders of the **Kinabatangan River** wind their way along 560 km and are home to one of the richest ecosystems in the world. In the heart of the mangroves and primary lowland forests that line the coast, discover one of **Borneo's** densest concentrations of **wildlife**. This program will enable you to fully appreciate this region's biodiversity. The activities on offer will give you the chance to head out for early morning and late afternoon expeditions through the tributaries and branches located along the river. As for the forest, it is one of the only places in the world where you can observe 10 different primate species.

# FORMALITIES ASIA

## FOR ALL CRUISES

The below information is current but subject to change at any time without advance notice from government authorities. Please consult your respective government agencies for visa and health information.

**Passport valid for at least six (6) months beyond the completion of your trip.** Passport must contain at least two completely clear, blank, unused visa pages for each visa required, not including any amendment pages. Visa pages with stains or ink from other pages in the passport are not usable. Guests who deviate from the scheduled embarkation or disembarkation port should research the foreign entry requirements for the port country. Due to government regulations, regrettably PONANT will have to deny boarding to any guest who fails to obtain the appropriate travel documentation for this trip.

## SPECIFIC FORMALITIES

**L'Austral: HO CHI MINH • YANGON** FROM OCTOBER 28<sup>TH</sup>, 2017 - PAGE 24 <sup>(1) (2)</sup>

**L'Austral: YANGON • BALI** FROM NOVEMBER 09<sup>TH</sup>, 2017 - PAGE 26 <sup>(3) (4)</sup>

**L'Austral: BALI • CAIRNS** FROM NOVEMBER 24<sup>TH</sup>, 2017 - PAGE 28 <sup>(5) (6) (7)</sup>

**L'Austral: CAIRNS • MANILA** FROM MARCH 15<sup>TH</sup>, 2018 - PAGE 38 <sup>(6)</sup>

(1) **Vietnam:** an individual visa must be obtained before your cruise.

(2) **Myanmar:** visa delivered and charged onboard (€45 subject to change). This visa allows you to exit Myanmar up to one month after disembarkation. Please bring two passport photos.

(3) **Myanmar:** an individual visa must be obtained before your cruise. You can apply for an e-Visa following the instruction on [www.evisa.moip.gov.mt](http://www.evisa.moip.gov.mt). The cost is 50USD and is valid for 90 days from date of issuance. Upon application of an E-Visa, you will receive a letter of confirmation which you will need to produce at the airport, which will be stamped by immigration along with your passport.

(4) **Indonesia:** visa delivered and charged onboard (€45 subject to change), the visa is valid for a 30-day period.

(5) **Indonesia:** the visa (35 USD subject to change) can be obtained at the airport in Bali. We recommend to have the exact change as credit cards are not accepted. Depending on your flight arrival time you might experience some waiting time.

(6) **Australia:** an Electronic Travel Authority (ETA) must be obtained before your arrival in Australia. For more information, please visit [www.immi.gov.au](http://www.immi.gov.au). Carriers should be aware that there will not be any physical evidence in your passport. Australian customs regulations are very strict, especially for the import of food items such as fresh food (even sealed), fruits, eggs, meat, plants, vegetables, seeds, grains. Fur and feathers are also forbidden. We highly recommend you consult this website for further details: [www.customs.gov.au](http://www.customs.gov.au).

(7) It is recommended that you contact your health professional for any specific medical advice relating to travel through these regions, including advice on Malaria prevention and dengue fever.

## IMPORTANT INFORMATIONS

- **Visas:** before departure, please check carefully that your visas are valid for the right date and time spent in the countries in order to avoid unpleasant situations.
- **Sightseeing:** some places can only be visited on foot. Also, sites may have stairs or require you to take off shoes.
- **Currency:** plan to have US dollars in small notes as they are easier to use outside of large cities.
- **Medication:** if you have a medical treatment, do not forget your prescription.
- **Coaches:** road conditions are poor in certain countries. Timings are unpredictable due to heavy traffic conditions. The comfort of coaches cannot be compared to that of international vehicles and often lack suspension.
- **Guides:** PONANT is aware that the quality of guides is of utmost importance and puts all efforts in place to secure the best local guides available. Note that guides in Asia often have heavy accents. Several of our calls visit small and isolated communities where resources (transportation and guides) are scarce, resulting in higher prices.

*As you will be visiting some very remote and isolated parts of the world, resources (transportation and guides) are scarce and may not be of the standards you are used to. We ask for your patience and understanding during these truly unique experiences as we share the lifestyle and cultures of these seldom visited people and places.*

# FORMALITIES OCEANIA

## FOR ALL CRUISES

The below information is current but subject to change at any time without advance notice from government authorities. Please consult your respective government agencies for visa and health information.

**Passport valid for at least six (6) months beyond the completion of your trip.** Passport must contain at least two completely clear, blank, unused visa pages for each visa required, not including any amendment pages. Visa pages with stains or ink from other pages in the passport are not usable. Guests who deviate from the scheduled embarkation or disembarkation port should research the foreign entry requirements for the port country. Due to government regulations, regrettably PONANT will have to deny boarding to any guest who fails to obtain the appropriate travel documentation for this trip.

## SPECIFIC FORMALITIES

**LE BORÉAL: HONOLULU • PAPEETE** FROM OCTOBER 10<sup>TH</sup> 2017 - PAGE 18

**USA:** Visa may be required. Please contact USA consulate website for details.

**LE BORÉAL: PAPEETE • PAPEETE** FROM OCTOBER 20<sup>TH</sup> 2017 - PAGE 20 <sup>(1)</sup>

**LE BORÉAL: PAPEETE • HANGA ROA** FROM OCTOBER 27<sup>TH</sup> 2017 - PAGE 22 <sup>(1)(2)</sup>

(1) **USA:** Should your flight transit via the USA, a visa or ESTA may be required. Please contact USA consulate website for details.

(2) **CHILE:** Entry/Exit requirements for Australian and Mexican citizens entering/exiting Chile must have a valid passport and pay a RECIPROCITY TAX that will be issued for a stay of up to 90 days upon payment. Currently, the fee is only charged at the Santiago International Airport. Payment can be made in U.S. currency or by credit card. At time of print, the fees were as follow (subject to change without notice): Australia: US\$117 - Mexico: US\$23.

**L'Austral: CAIRNS • NOUMEA** FROM DECEMBER 08<sup>TH</sup> 2017 - PAGE 30 <sup>(1) (2) (3) (4) (5)</sup>

**L'Austral: DUNEDIN • WELLINGTON** FROM JANUARY 05<sup>TH</sup> 2018 - PAGE 34 <sup>(1)</sup>

**L'Austral: SYDNEY • CAIRNS** FROM MARCH 06<sup>TH</sup> 2018 - PAGE 36 <sup>(1)</sup>

(1) **Australia:** an Electronic Travel Authority (ETA) must be obtained before your arrival in Australia. For more information, please visit [www.immi.gov.au](http://www.immi.gov.au). Carriers should be aware that there will not be any physical evidence in your passport.

(2) **Solomon Islands:** visa on arrival delivered onboard.

(3) **Papua New Guinea:** visa on arrival delivered onboard.

(4) **Vanuatu:** no visa necessary.

(5) It is recommended that you contact your health professional for any specific medical advice relating to travel through these regions, including advice on Malaria prevention, dengue fever as well as Ross River fever, tetanus, hepatitis and typhoid.

## IMPORTANT INFORMATIONS

- **Australia:** Australian customs regulations are very strict, especially for the import of food items such as fresh food (even sealed), fruits, eggs, meat, plants, vegetables, seeds, grains. Fur and feathers are also forbidden. We highly recommend you consult this website for further details: [www.customs.gov.au](http://www.customs.gov.au).
- **Visas:** Before departure, please check carefully that your visas are valid for the right date and time spent in the countries in order to avoid unpleasant situations.
- **Sightseeing:** Some places can only be visited on foot. Also, sites may have stairs or require you to take off shoes.
- **Currency:** Plan to have US dollars in small notes as they are easier to use outside of large cities.
- **Medication:** If you have a medical treatment, do not forget your prescription.
- **Coaches:** road conditions are poor in certain countries. Timings are unpredictable due to heavy traffic conditions. The comfort of coaches cannot be compared to that of international vehicles and often lack suspension.
- **Guides:** PONANT is aware that the quality of guides is of utmost importance and puts all efforts in place to secure the best local guides available. Note that guides in Asia often have heavy accents. Several of our calls visit small and isolated communities where resources (transportation and guides) are scarce, resulting in higher prices.

## EXPEDITION CRUISE SUBANTARCTICA, NEW ZEALAND AND AUSTRALIAN ISLANDS

- This program is first of all an expedition.
- Given the inaccessibility of the area visited, it is highly recommended to choose your insurance company carefully, especially if you are insured by your credit card. In addition, **it is mandatory to return the medical questionnaire, provided at time of booking, between 90 and 45 days prior to departure.** Any false information on this questionnaire may lead to a refusal of your embarkation at the port of departure, without any possible recourse.
- Due to the exceptional nature of this itinerary, the calls/sites listed are only a guide. The final route will be confirmed by the ship's Captain with priority being given to passenger safety. Pack ice may also force the Captain to change course at the last minute. His decision will be based on advice from expert pilots who are present on board during our cruise in South Georgia and Antarctica.
- Zodiac® landings or outings accompanied by your expedition team offer plenty of opportunities to discover and experience what Antarctica and/or South Georgia have to offer at close range. These will of course depend on the weather conditions, the ice, the wind and the sea state.
- A warm waterproof parka will be provided onboard (available for adults only, in case of consecutive cruises, only one complementary parka). We also recommend you follow the clothing instructions and advice you will find in your travel documents. Complementary boot hire is available, please contact us.





# Le Boréal & L'Austral

*Fluid lines, streamlined bow, and an appearance enhanced by two glass arches which let in light and provide water views: the exterior lines of Le Boréal and l'Austral reflect the spirit of a subtly revisited nautical theme. Aboard, our passengers truly enjoy the relaxed elegance of the atmosphere and experience a different and exclusive type of cruise, and a concept of travel that is intimate, luxurious and authentic...*



## EXCEPTIONAL DESIGN

These are ships on a human, intimate scale, perfectly adapted to this extreme destination, designed to allow all passengers to make the most of the breathtaking views of the Pacific Ocean. On board, an elegant selection of fine materials in discreet and soothing shades of taupe, grey, white, and natural wood gives these ships a unique style that is both contemporary and inviting.

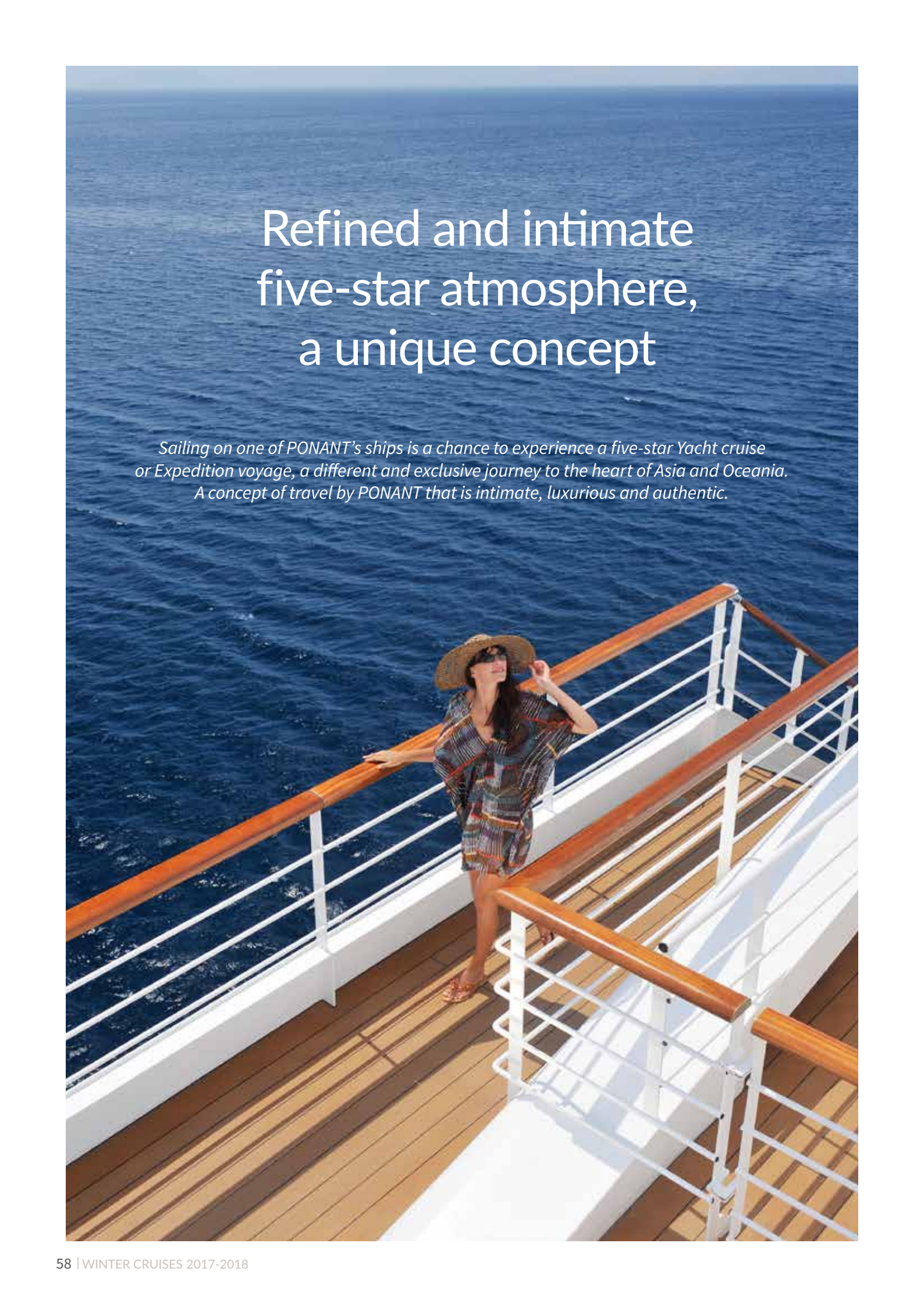
## SMALL IS BEAUTIFUL

Limited capacity, secluded destinations in Asia and Oceania: at a time when giant cruise ships abound, PONANT has chosen to remain true to its philosophy by developing an ultra-modern but always moderately-sized fleet. Thus *Le Boréal* and *L'Austral* boast only 132 cabins and suites. The perfect blend of luxury and cutting-edge technology.

## GREEN CHIC

Because we are convinced that a responsible approach is required in our quest for excellence, PONANT chose to equip its sisterships with efficient equipment. As a result, they have all been awarded the international "Clean Ship" label.



A woman wearing a wide-brimmed straw hat and a colorful patterned dress stands on the wooden deck of a cruise ship. She is leaning against the white railing with a polished wooden handrail. The ship is sailing on a deep blue ocean under a clear sky. The text is overlaid on the upper half of the image.

# Refined and intimate five-star atmosphere, a unique concept

*Sailing on one of PONANT's ships is a chance to experience a five-star Yacht cruise or Expedition voyage, a different and exclusive journey to the heart of Asia and Oceania. A concept of travel by PONANT that is intimate, luxurious and authentic.*





## SERVICE ON BOARD

Whichever cruise you take, even to the most extreme destinations, you will experience the same exceptional conditions of comfort and service that are PONANT's hallmark: the unique atmosphere which we go to great lengths to preserve in order to stay true to our philosophy, creating that privileged feeling of being aboard one's own private yacht.

PONANT makes your cruise unique through elegant design, an intimate atmosphere, and a French touch which gives pride of place to discreet service and excellent cuisine.

To make your trip even more perfect and ensure all of your needs are met, a butler service is available to passengers travelling in the suites on Deck 6.



## A JOURNEY TO THE LAND OF FLAVOURS

Whether you are having breakfast among friends with the horizon as special guest, a sun-kissed lunch on one of our exterior decks, or a delicious dinner prepared by our talented chefs in the elegant setting of our gastronomic restaurants, you will enjoy our refined and varied cuisine, served with a selection of fine wines presented by our expert sommeliers.



## SPA & WELLBEING BETWEEN SEA AND SKY

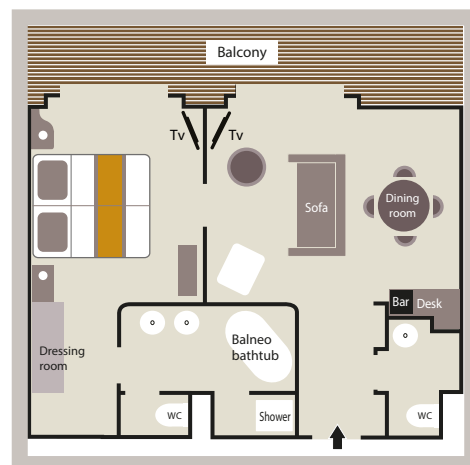
Your cruise is the ideal moment for treating yourself, and that is why PONANT has joined forces with the leading French cosmetic house, SOTHYS™ to offer you a series of expert, top-of-the-range treatments.

The onboard Spa invites you to experience total relaxation under the expert hands of our experienced therapists. The wellbeing centre also includes a hair salon as well as a fitness room with huge plate-glass windows opening onto the horizon.

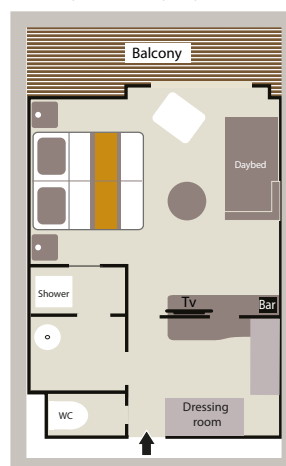
In order to secure your Spa treatments, please make your SPA reservation at time of cruise booking. For further details about Spa treatments, please consult our "Ponant Yacht Spa" available on [www.ponant.com](http://www.ponant.com).

# Staterooms & Decks

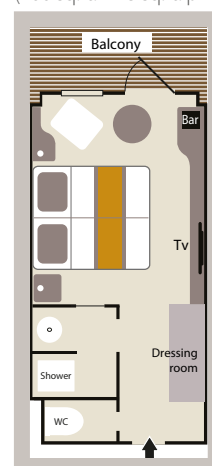
## OWNER'S SUITE (484 sq.ft + 97 sq.ft. private balcony)



## 3 DELUXE SUITES (290 sq.ft. + 54 sq.ft. priv. balcony)

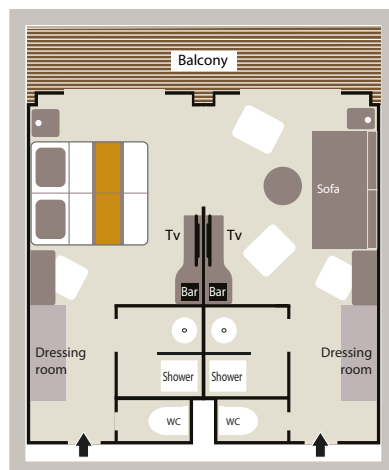


## 28 DELUXE STAT. (200 sq.ft. + 43 sq.ft. priv. balcony)

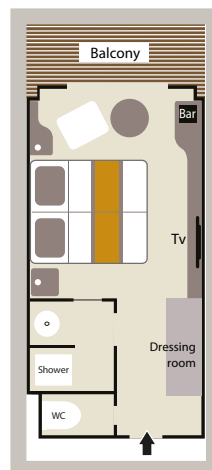


*Deluxe Suites aboard Le Boréal: 1 shower and 1 bathtub.*

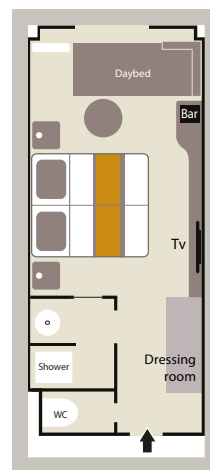
## 20 PRESTIGE SUITES (37 m<sup>2</sup> + 8 m<sup>2</sup> balcon privé)



## 92 PRESTIGE STAT. (18,5 m<sup>2</sup> + 4 m<sup>2</sup> balcon privé)

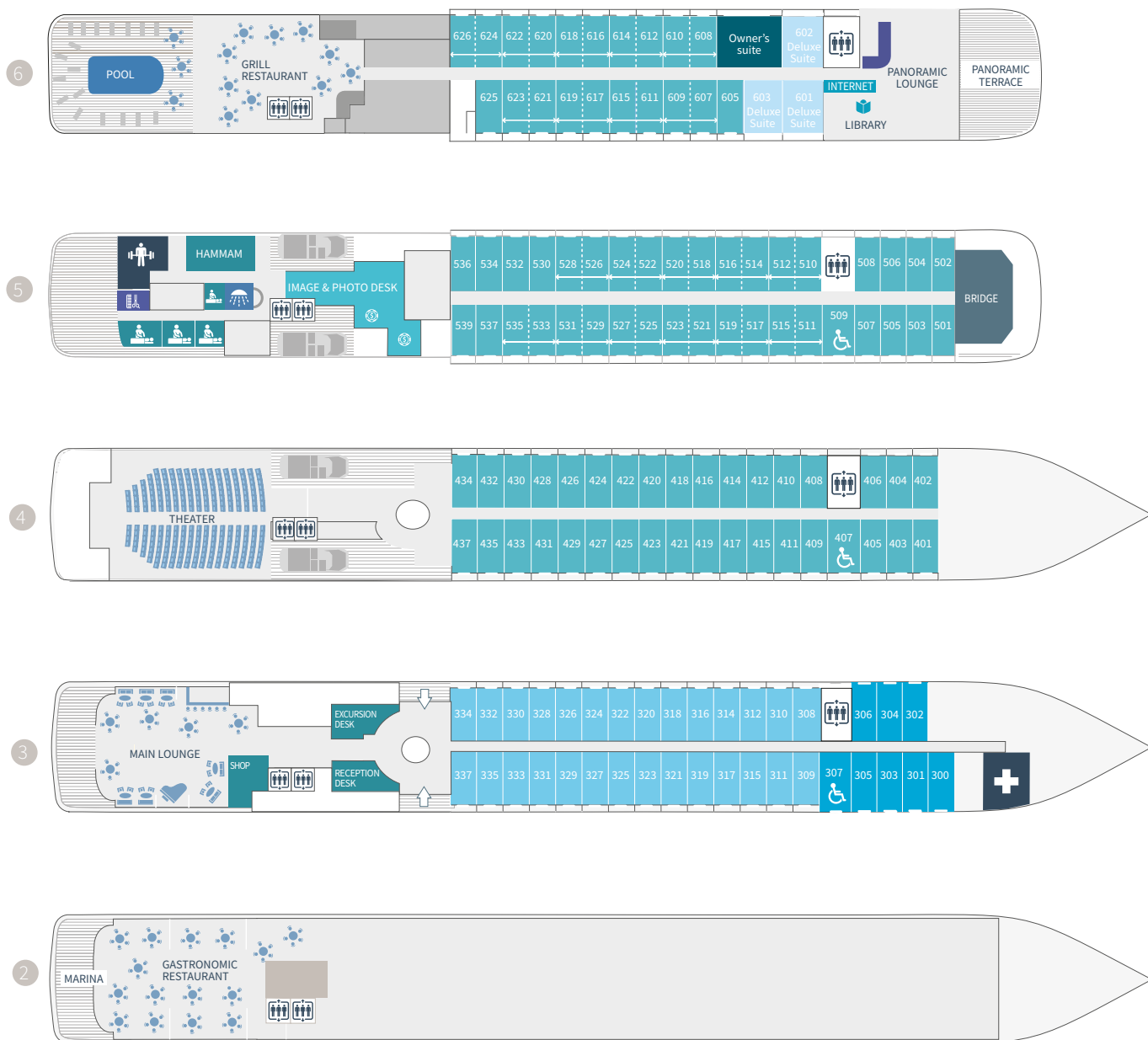


## 8 SUPERIOR STAT. (21 m<sup>2</sup>)



*Prestige Staterooms aboard Le Boréal, Decks 5 & 6: 1 shower or 1 bathtub depends on cabins.*

Le Boréal  
& L'Austral



- 2 Gastronomic Restaurant - Marina
- 3 28 Deluxe staterooms with private balcony  
8 Superior staterooms (cabins 300 & 301 have a porthole) - Main Lounge - Shop - Reception desk - Excursion desk - Medical centre
- 4 35 Prestige staterooms with private balcony Theatre
- 5 37 Prestige staterooms with private balcony (with 22 Prestige staterooms convertible into 11 Prestige suites) - Fitness - Beauty Corner Sothys™: Balneo, Hammam, Massage, Hairdresser - Relaxation room - Image & photo desk - Bridge
- 6 Owner's Suite - 3 Deluxe Suites with private balcony - 20 Prestige staterooms with private balcony (with 18 Prestige staterooms convertible into 9 Prestige suites) - Pool - Grill Restaurant - Internet space - Library - Panoramic lounge - Panoramic terrace

- Owner's Suite Deck 6
- Prestige Suites Decks 5 - 6
- Deluxe Suites Deck 6
- Prestige Staterooms Decks 4 - 5 - 6
- Deluxe Staterooms Deck 3
- Superior Staterooms Deck 3



# GENERAL TERMS AND CONDITIONS OF SALE

## Important notice

These General Terms and Conditions of Sale (GTCS) form an integral part of the Contract entered into by CDP and the Traveller. The Particular Terms and Conditions of Sale (PTCS) – which are specific to each Cruise season, summer or winter – may create an exception to these General Terms and Conditions of Sale. In any event, the specifications of the Cruise Ticket and of the Passenger Ticket shall prevail over the General and Particular Terms and Conditions of Sale. All these contractual documents make up the Contract entered into by CDP and the Traveller.

In the event that a provision in these General Terms and Conditions of Sale and/or in the Contract breaches a mandatory legal provision, and/or is considered as invalid, this invalidity shall not affect the validity of the other clauses.

In accordance with Law No. 78-17 of 6 January 1978 regarding data privacy, Travellers have the right to view and correct any personal information that concerns them, and that Compagnie du Ponant may be required to gather for the purposes of its business activities.

## 1. Definitions:

1.1 **“Tickets”**: refers interchangeably to Transportation, Cruise, and/or Airline Tickets.

1.2 **“Airline Ticket”**: A document that contains the specifications of the air transportation contract via which the Airline undertakes to carry the Traveller between the airports mentioned therein.

1.3 **“Cruise Ticket”**: a document that contains the specifications of the cruise contract via which the Organiser of the Cruise undertakes to have the Traveller carried by the Sea Carrier, and to provide them with the amenities and services that are mentioned on the Cruise Ticket. The Cruise Ticket delivered to the Traveller is governed by the general terms and conditions of the Cruise Ticket.

1.4 **“Passenger Ticket”**: a document that contains the specifications of the passenger transportation agreement via which the Sea Carrier undertakes to carry the Traveller between the ports mentioned therein. The Passenger Ticket delivered to the Traveller is governed by the general terms and conditions of the Passenger Ticket.

1.5 **“CDP”**: Compagnie du Ponant, a simplified joint stock company, which has its registered office at 408, avenue du Prado 13008 Marseille, with share capital of €3,644,607. The company is registered on the Marseille Trade and Companies Register under No. 344 497 011, holds Government Licence No. 013.06.0005, is a member of SNAV (French National Travel Agents' Association) and is registered with ATOUT France under No. IMO13120040. The company's financial cover is provided by APST, 15 avenue Carnot, 75017 Paris. Compagnie du Ponant has subscribed to an insurance policy covering its Professional Civil Liability under No. AA714708 with Generali Assurance IARD – 7 boulevard Haussmann – 75456 Paris Cedex 09.

1.6 **“Signing of the Contract”**: refers to the point when the contract is entered into between the Traveller(s) and CDP, i.e. when the latter confirms their booking to the Traveller.

1.7 **“General Terms and Conditions of Sale”** or **“GTCS”**: the clauses in this document.

1.8 **“Particular Terms and Conditions of Sale”** or **“PTCS”**: the contractual clauses applicable to the Contract, which are specific to each Cruise season – summer or winter.

1.9 **“Contract”**: all the respective obligations incumbent upon CDP and the Traveller, as specified on the invoice and the Tickets, as well as in the GTCS and PTCS.

1.10 **“Cruise”**: a round-trip by sea as described in the CDP Sales Brochure and/or on the CDP website, and on the Cruise Ticket.

1.11 **“Expedition Cruise”**: cruise during which exploration excursions are planned in inflatable dinghies, accompanied by nature guides.

1.12 **“Pre-Booked excursion and/or extension”**: Services including Transfers, sight-seeing trips and ground services before, during and/or after the Cruise.

1.13 **“Fixed-Rate Package”**: refers to the combination of a Cruise with a flight and/or a Transfer and/or Pre- and Post-Cruise Services, and/or Pre-Booked Excursions and/or Extensions, and/or any other tourism service booked when Signing the Contract. The Fixed-Rate Package does not include land excursions that have not been booked at the same time as the Cruise, and the services offered on board the ship.

1.14 **“Organiser of the Cruise”**: a private individual or a company that undertakes to have the Travellers carried by the Sea Carrier, and to provide them with the amenities and services that are mentioned on the Cruise Ticket, and whose letterhead appears on the Cruise Ticket.

1.15 **“Disabled Person”** or **“Person with Reduced Mobility”**: any person affected by a restriction on their movements or a restriction preventing them from enjoying the Services agreed due to a significant alteration of one or several of their physical, sensory, mental, cognitive, or psychological functions, to multiple handicaps, or to a debilitating health problem.

1.16 **“Service”**: refers to any Cruise, Fixed-Rate Package, flight, Transfer, Pre- and Post-Cruise Service, Pre-Booked Excursion and/or Extension, and any other tourism service booked when Signing the Contract.

1.17 **“Price”**: total cost of the Services booked by the Traveller.

1.18 **“Pre- and Post-Cruise Services”**: Services including Transfers, sight-seeing trips and ground services before and/or after the Cruise, as mentioned in the Contract.

1.19 **“Transfer”**: an operation that consists in carrying Travellers between the port of embarkation and/or disembarkation and a meeting point determined by CDP (airport, hotel, or railway station, etc.).

1.20 **“Sea Carrier”**: a private individual or company that operates the ship that carries the Travellers, and whose letterhead is shown on the Passenger Ticket.

1.21 **“Air Carrier”**: a company that undertakes to carry the Travellers by air, and whose letterhead is shown on the Airline Ticket.

1.22 **“Vendor”**: a private individual or legal entity that has sold the Services included in the Contract directly to the Travellers.

1.23 **“Travellers”**: any person named at the time of the booking and/or Signing of the Contract, and whose name is shown on an invoice and/or on the Tickets issued by CDP or by the Vendor.

## 2. Acceptance and application of the General Terms and Conditions

2.1 The Signing of the Contract implies acceptance of all these GTCS and PTCS by the Traveller, with no reservations, together with the clauses and conditions in the Passenger Ticket and the Cruise Ticket.

## 3. Applicable legislation

3.1 Where CDP acts in the capacity of a Sea Carrier, the contractual relations between CDP and the Traveller shall be governed by the Passenger Ticket and by the provisions of the French Transport Code, and specifically Articles L. 5420-1 to L. 5421-12, by the Application Decree of 31 December 1966, and by the provisions of the London International Convention of 19 November 1976, as well as by the provisions of Regulation 392/2009 issued by the European Parliament and Council on 23 April 2009, where applicable, which form an integral part of the Passenger Ticket.

3.2 Where CDP is the Organiser of the Cruise, the contractual relations between CDP and the Traveller shall be governed by the Contract, which includes the Cruise Ticket, as well as by Articles 47 to 49 of Law No. 66-420 of 18 June 1966 regarding chartering and sea carriage contracts, and its application decree of 31 December 1966.

3.3 Where CDP is the Vendor of a tourism package within the meaning of Article L. 211-2 of the French Tourism Code, the contractual relations between CDP and the Traveller shall be governed by the Contract, and by Articles L. 211-1 et seq. and R. 211-1 et seq. of the French Tourism Code.

## 4. Payment of the Price

4.1 The Signing of the Contract implies payment of 25% of the Price of this Service as an advance, while the balance must be paid within 60 business days at most prior to the beginning of the first Service featured in the Contract.

4.2 As an exemption to Article 4.1, the balance must be paid within 90 days at most before the beginning of the first Service featured in the Contract in the case of Expedition Cruises.

4.3 Once the Service has been paid for in full, the Traveller shall receive the Ticket(s) and the exchange vouchers, where applicable, together with the insurance policy, if that policy has been

subscribed directly with CDP.

## 5. Rates and reductions per person and per cruise

5.1 **Single Supplement**: The single supplement shall apply to any person who occupies a cabin on their own. The Supplement shall apply to the port-to-port section (excluding port taxes) of the Ponant Bonus rate in effect. This supplement may change depending on the occupancy rate of the cruises concerned. It may therefore change for certain categories of cabins and/or suites only, or for an entire cruise at any time with no notice. The single supplement shall be offered in certain cabin categories for a selection of cruises. This selection shall be updated in accordance with the occupancy rate, and can be viewed on our website at [www.ponant.com](http://www.ponant.com).

5.2 Depending on the occupancy of the ship (with the exception of the LE PONANT yacht) the time of reservation, a “guaranteed” Deluxe Deck 3 cabin may be offered. This means that the booking has been made in the Deluxe Deck 3 category without a cabin number being assigned, and that the cabin shall be assigned at the Company's discretion, and may change at any time until embarkation. Once the cabin number has been assigned, no request for a change may be accepted. This formula offers the advantage of potentially benefiting from a cabin in a higher category without a price surcharge. The minimum category selected at the time of booking shall be guaranteed in any event.

## 6. Passports, Visas and Vaccination Certificates

6.1 Every Traveller who is a French national shall be responsible for performing the administrative and/or health formalities required by the countries concerned by the Services, including those formalities disclosed by CDP and viewable on the [www.ponant.com](http://www.ponant.com) website as well as in the brochure, prior to Signing the Contract.

6.2 Travellers who are foreign nationals must contact the relevant embassies and/or consulates and perform the administrative and/or health formalities required by the countries concerned by the Services prior to Signing the Contract.

6.3 CDP shall not be held responsible for the consequences of a Traveller failing to comply with police, customs, or health formalities prior to or during the length of the Services under any circumstances. A Traveller who is unable to board a flight or a ship because they cannot present the documents required may not claim any refund or compensation.

6.4 In any event, Travellers are advised to check all the information with the authorities concerned prior to the departure date. CDP advises Travellers to consult the country factsheets relating to the chosen destinations prepared by the French Ministry of Foreign Affairs on the <http://www.diplomatie.gouv.fr/fr/conseils-aux-voyageurs> website, or to make enquiries by telephone (+33 1 43 17 53 53, French Ministry of Foreign Affairs). CDP specifically draws Travellers' attention to the fact that the information provided may change up until the departure date, and they are advised to consult that information up until the time of departure.

CDP invites Travellers to adjust their behavior to the visited country, to exercise vigilance and to avoid carrying valuable objects during their travel.

## 7. Embarkation and sea carriage conditions

### • General rules

7.1 The Traveller must present themselves for embarkation under the conditions determined by the Passenger Ticket, and at least two hours before the ship's scheduled departure time. The Passenger Ticket and/or the Cruise Ticket issued by CDP shall only be valid for the Cruise and the ship mentioned on the ticket.

7.2 The purpose of the Passenger Ticket is to transport the Travellers and their luggage from the time when they embark at the port of departure to the time when they disembark at their destination.

7.3 All Travellers must hold a valid passport, or an identity card, where applicable, that are valid for six months following the date of their return, together with the visas and vaccination certificates likely to be required in the ports where the ship calls and the port of destination. Every Traveller shall be personally responsible for complying with the legal and regulatory provisions required prior to departure. The Carrier, the Organiser of the Cruise, and/or CDP, and/or the Captain may refuse to allow a Traveller who does not show the documents enabling them to disembark at the port of destination port and at the scheduled ports of call to embark or disembark.

7.4 If a Traveller who has reserved a Cruise solely on a port-to-port basis organises their own air or ground transport to the port of embarkation and/or to their home address, they are strongly advised to purchase changeable and refundable transportation tickets, and to allow for reasonable transfer times between the station, the airport, and the port. In the event of a delay, cancellation or change, CDP shall not be responsible for the transport and Transfer expenses and/or for any other kind of amenities and services not included in the Cruise Ticket that were not directly purchased from CDP. CDP shall not be responsible for any incidents or accidental damage to equipment and/or bodily injury that may occur during travel to and/or from the ship.

7.5 Every Traveller shall guarantee that they are fit to travel by sea, and that their state of health or behaviour shall not harm the other Travellers or the proper performance of the Services agreed and/or proposed. If a Traveller's state of health is likely to limit their ability to enjoy the Services agreed, or to disrupt the proper provision of those Services, they must inform CDP, and must provide a medical certificate certifying their fitness on request. Any health problem, if known, must be mentioned to CDP's Medical Department in writing when Signing the Contract or before the departure of the ship (or prior to the beginning of the Services) at the latest.

7.6 Travellers shall be responsible for Doctor's appointments, medical care, and medication on land or on board the ships. All Travellers must ensure that they are covered by an appropriate medical insurance policy.

7.7 In the event of the threat of an epidemic, the Carrier, the Organiser of the Cruise, CDP, the Captain of the ship, or any other local health authority may demand that the Traveller fill in a health questionnaire and take a screening test, where applicable, before or at the time of embarkation or disembarkation, including during port calls.

7.8 In the specific case of Expedition Cruises, where you are reminded that any medical facilities are several days away by sea, a mandatory full medical questionnaire (a document provided on Signing the Contract) must be filled in by the Traveller's referring attendant physician between 90 and 45 days prior to the beginning of the Services, and must be returned to CDP's Medical Department ([medical@ponant.com](mailto:medical@ponant.com)) by mail or e-mail within 40 days prior to the beginning of the Services at the latest. Any medical certificate issued prior to the determined period shall not be valid. Any Traveller who has not returned their duly completed mandatory medical certificate shall not be allowed to embark, and shall not benefit from any refund.

7.9 Travellers must comply with the rules on board throughout the journey. Travellers are required to attend any safety demonstrations and explanations that are organised on board, and to follow the crew's instructions at all times.

7.10 If they consider it necessary, the Carrier, the Organiser of the Cruise, CDP and/or the Captain of the ship may terminate the contract and refuse to carry any Traveller who does not comply with the conditions for entering into the destination ports, or whose presence on board could be harmful to the comfort, health, and safety of the other Travellers and the crew, breach the laws and rules of the ports where the ship calls, or render the Carrier, the Organiser of the Cruise, and/or CDP liable for the Traveller's legal defence or repatriation. Accordingly, the Organiser of the Cruise, the Carrier, and/or CDP, and/or the Captain of the ship may decide to take the following appropriate measures: Refuse to allow the Traveller(s) to embark or disembark in any port that the ship calls at; 2) Disembark the Traveller(s) at any port that the ship calls at; 3) Transfer the Traveller(s) to another ship; 4) Confine the Traveller(s) on board, in their cabin, or in a cabin managed by the on-board medical team; 5) Have the doctor and their team administer any drugs, medications, or other permissible substances, and/or confine the Traveller in hospital or in any other similar facility at the port of destination if the on-board doctor considers it necessary.

### • Disabled Persons and Persons with Reduced Mobility

7.11 Due to safety requirements, every Traveller must be independent, or travel with a person who is capable of providing them with all the assistance required during the performance of

the Services.

7.12 Travellers whose mobility is restricted due to a physical disability or to a condition that requires special treatment and/or special assistance, including people who use wheelchairs, must inform CDP in writing at the time when they make the booking request, or as soon as the Traveller becomes aware of their disability if that disability occurs following the booking, but in any event at least 30 days prior to the beginning of the Services, in order to enable CDP to confirm to the Traveller that they will be physically able to enjoy the Cruise on board the ship and/or the Services agreed, *inter alia*.

7.13 The Organiser of the Cruise, the Carrier, and/or CDP, and/or the Captain reserve the right to refuse access to Travellers who have failed to inform CDP or the Vendor about a disability or their need for assistance, if such disability and need are not compatible with the applicable safety rules and the specific regulations for the navigation area, or require care that CDP and/or the Carrier would not be in a position to provide, or if the design of the passenger ship, and the port infrastructure and facilities, including port terminals, make the embarkation, disembarkation, or transportation of the person concerned under satisfactory safety conditions impossible.

7.14 Going ashore may be difficult or even impossible for Travellers with Restricted Mobility, or Disabled Travellers, especially in the event of disembarkation in launches or/and excursions in dinghies.

7.15 Once they have received CDP's written agreement, Travellers who use a wheelchair must embark with their own wheelchair, and must absolutely be accompanied by a person who is capable of assisting them at all times. Every disembarkation shall nonetheless be subject to the approval of the Captain.

7.16 The Boréal, the Austral, the Soléal and the Lyrial all have three cabins that are specially equipped to receive Disabled Persons, or Persons with Restricted Mobility. Please note that the Le Ponant yacht specifically does not allow access to Persons with Restricted Mobility or Disabled Persons due to a different design.

#### • Children and Pregnancy

7.17 Children under three years of age shall not be authorised to embark on the ships. Children aged over three and under eight may only embark on the ships on presentation of an embarkation authorisation, which shall preferably be requested as soon as the child is registered as a Traveller, and issued against a release, and which must be presented at the time of embarkation in all cases, failing which the Organiser of the Cruise, the Carrier, and/or CDP shall not be able to admit the child on board.

7.18 In the case of all the Expedition Cruises, children must be fully independent during all the outside activities organised and during disembarkation in rubber dinghies, be sufficiently tall to sit on the inflatable sides of the dinghies, and old enough to understand, and immediately respond to the orders given by the persons in charge. As a result, children's participation in any activity in an inflatable dinghy shall be subject to the agreement of the Captain and of the Expedition Head, depending on the sea conditions, and the difficulty of disembarking at each location visited.

7.19 Minor children shall remain under their parents or guardians' full and entire responsibility when on board and/or during excursions.

7.20 As the ships do not have any facilities to enable women to give birth on board, women who are over six months pregnant shall not be allowed to embark on the ships. In any event, pregnant women travelling on board the ship are advised to consult a doctor prior to embarkation, in order to ensure that their state of health is compatible with the planned cruise.

#### • Authorised luggage

7.21 Every Traveller must label each luggage item correctly, and indicate their full name, the name of the ship, their destination, and their cabin number in a highly legible manner. The markings must be visible and permanent.

7.22 Goods, property, and items where the contents may threaten the health and safety of the other Travellers and their Luggage, of persons or of property, and may damage or pollute the ship, inflammable, explosive, corrosive, hazardous, or odorous materials, or materials that are likely to leak, items where importation is prohibited or that do not comply with customs or police regulations, and generally speaking property and items other than those intended for the Traveller's personal use are prohibited on board and in their luggage (hereinafter the "Prohibited Items"). In any event, the Traveller shall be liable for any injury, loss, or damage suffered as a result of the presence of Prohibited Items in their luggage or in their cabin, and shall hold the Organiser of the Cruise, the Carrier, and/or CDP harmless against any proceedings that may be initiated against them as a result of the presence of these Prohibited Items on board or at the time of embarkation or disembarkation. These Prohibited Items may be disembarked, destroyed, thrown into the sea, or rendered harmless at any time and any place by the Organiser of the Cruise, the Carrier, the crew, and/or CDP, without compensation, and notwithstanding payment of any destruction costs by the Traveller.

7.23 Travellers must keep an eye on their luggage and personal effects throughout the length of the Services, including their stay on board and during embarkation, transfer, and disembarkation operations. The Organiser of the Cruise, the Carrier, and/or CDP shall decline any liability for luggage that is left unsupervised by the Traveller, and where the latter has not taken all necessary precautions to avoid theft, loss, or damage. The Organiser of the Cruise, the Carrier and/or CDP shall not be liable for fragile items, jewellery, watches, money, cash, computers and other electronic appliances, mobile phones, or any other valuable items that the Traveller has not declared as valuables, and entrusted for custody on board with a descriptive inventory and an estimate, and for which they have not paid the corresponding proportional custody fees.

7.24 Travellers shall be liable under civil and criminal law for any direct or indirect damage that they cause to the Organiser of the Cruise, the Carrier, and/or CDP, and to the other Travellers or third parties. They shall be solely liable for any fine or penalty inflicted by the relevant authorities on their account.

7.25 Travellers shall agree to allow the Organiser of the Cruise, the Carrier, the officers of the crew and/or CDP, together with the customs, health and/or administrative authorities in port of call countries or the State where the ship is registered free access to their cabin, luggage, and personal effects on request and without delay.

7.26 The Organiser of the Cruise, the Carrier, and/or CDP shall not be liable for the damage caused to photographic, telephone, and electronic equipment and cameras that are lost or damaged during the performance of the Services, whether on board the ship or in ancillary facilities, or during embarkation and disembarkation operations, or for any damage caused to items that have fallen into the water.

#### • Pets

7.27 Pets, including service or medical assistance animals are prohibited on board the ships, and are not admitted for embarkation.

#### • Smoking policies

7.28 The ships are non-smoking except for the specifically designated areas on the outside decks (the policy also applies to electronic cigarettes).

#### 8. Air carriage

8.1 The full Airline Tickets shall be presented in the form of electronic tickets. The surnames and given names must strictly be those indicated on the Traveller's valid passport. Any error or request for alteration shall result in the purchase of a new Airline Ticket.

8.2 In accordance with French Decree No. 2007-669 of 2 May 2007 regarding the obligation to inform Travellers of the identity of the Airline Carrier, CDP shall inform Travellers of the identity of the known Airline Carrier(s) likely to provide air transportation as at the date when they register. In the event of a change subsequent to the signing of the Contract, CDP undertakes to disclose any changes in the identity of the Airline Carrier(s) prior to departure as soon as it becomes aware of them.

8.3 Airline companies may enter into so-called mutual code-sharing agreements, which consist in marketing a flight under their own name even though it may be operated by an aircraft belonging to another airline.

8.4 The term "direct flight" means that there shall be no change of aircraft, but does not exclude the possibility of one or several stop-overs. The term "non-stop direct flight" means a flight with no change of aircraft and no stop-overs.

8.5 The timetables and types of transport mentioned by CDP shall be those disclosed by the Airline Carriers. They shall therefore be indicative up until the time of departure, and subject to alterations for all kinds of reasons (additional stop-overs, weather conditions, air traffic control authorisations, and strikes, etc.). In accordance with the Warsaw and Montréal Conventions, the timetables and itineraries, and the departure and destination airports shall never be a contractual feature of the Transportation Ticket; under these conditions, CDP cannot be held liable for any changes beyond its control.

8.6 CDP cannot be held responsible for any technical, climate-related or political incident, delay, cancellation or strike, additional stop-over, or change of aircraft or routing, etc. that may arise during the air transportation, and no compensation may result on any grounds whatsoever. If a Traveller wishes to waive their right to benefit from a Service, they shall be liable for the cancellation fees set out below.

8.7 The Airline Carrier's responsibility shall be limited in the event of damage, complaints, or claims of any kind, in accordance with the conditions set out on the Airline Tickets. CDP shall not refund any expenses (taxis, meals and hotels, etc.) if the Traveller is under the responsibility of the Airline Carrier. The consequences of any accidents and/or incidents that may arise during the performance of the air transportation shall be governed by the Warsaw and Montréal Conventions, and by the local regulations governing domestic transport systems in the country concerned.

8.8 Depending on the Airline Carrier, the usual baggage allowance on regular international flights (excluding the benefits granted to members of loyalty programmes) is strictly limited to a maximum of 23 kg in the hold and 8 kg in the cabin per Traveller. On regular domestic flights, the allowance usually ranges between a maximum of 15 and 20 kg in the hold. On charter flights operated by CDP, the maximum hold luggage allowance is 23 kg (subject to confirmation by the selected Airline Carrier) and 5 kg for each item of luggage in the cabin. Travellers are advised to pay close attention to this restriction. Airline Carriers do not hesitate to charge additional fees for excess baggage, and sometimes refuse to check luggage that is too heavy or too bulky due to strict security rules. The liability of CDP and of the Airline Carrier cannot be engaged in the event of refusal to check in a Traveller due to the fact that their luggage exceeds the allowance.

#### 9. Transfer of the Contract

9.1 A Traveller may transfer their Contract to a third party who fulfils the same conditions as them for the performance of all the Services, as long as those Services have not begun, in accordance with Article R. 211-7 of the French Tourism Code, and only where this Code applies to CDP.

9.2 The transferor and/or the transferee shall be required to pay the resulting fees. They must inform CDP of this decision by any means that enables them to obtain an acknowledgement of receipt (registered letter with acknowledgement of receipt, e-mail, or fax, etc.) within 60 business days at the latest prior to the beginning of the Services.

9.3 In the event that a Traveller transfers their Contract without informing CDP in accordance with the procedures provided for above, this transfer shall not be valid, and the Services provided for in the Contract shall be cancelled with no possible refund.

#### 10. Cancellation or alteration of the Contract by the Traveller

10.1 Pursuant to Article L. 121-21 of the French Consumer Code, Travellers are informed of the fact that they do not benefit from the right of withdrawal provided for in Article L. 121-17 of said Code.

10.2 Travellers cannot alter the Services provided for in the Contract without CDP's prior agreement.

10.3 If a Traveller alters or cancels a portion or all of the Services provided for in the Contract, shall need to inform CDP via any means that enables them to obtain an acknowledgement of receipt (fax, email, or registered letter with acknowledgement of receipt) as soon as the event resulting in this alteration or cancellation occurs. The date on which the document was sent shall be the date on which the alteration and/or cancellation fees are invoiced.

Requests to alter a cruise shall only be accepted subject to Compagnie du Ponant being informed within a timeframe of at least 90 days before the departure of the cruise, via the means set out above. This timeframe shall be increased to 150 days for Expedition Cruise programmes.

Beyond that deadline, alteration requests shall be considered as cancellation requests, and shall therefore be managed according to Paragraph 10.5, which governs cancellation fees.

The alteration terms and conditions exclusively involve the option for the traveller to replace a port-to-port cruise with another port-to-port cruise with Compagnie du Ponant.

##### 10.4 Alteration fees:

In the event of an alteration involving a higher-value travel package, and subject to compliance with the terms and conditions set out in Points 10.4.a to 10.4.d, no alteration fee shall be applied to the cruise service, or to the other services, (e.g. air travel). The rebooking fees shall amount to the expenses already incurred by Compagnie du Ponant:

-10.4.a: The passenger may alter their cruise subject to replacing it with a more expensive cruise than the one that is being replaced;

-10.4.b: The departure date of the cruise booked as a replacement must fall within a maximum timeframe of 12 months as from the date when the alteration request was made;

-10.4.c: The reservation and payment of the deposit for the replacement cruise must be made at the same time as the alteration request;

-10.4.d: The replacement cruise selected shall become non-exchangeable and non-refundable from that point; the passenger may only cancel it.

In the event that the Contract is switched to a Service of a lower value than the initial value, alteration fees shall apply, and shall be equal to those in the cancellation terms and conditions set out in Article 10.5 below. The fee percentage shall then apply to the difference between the price of the initial Service and/or of the new Service.

##### Specific terms and conditions for an alteration request from Ponant Yacht Club High Admirals

In the event of the 1st alteration of a tourism package: no fees shall be applied to the cruise service, as long as the request is made within a timeframe of at least 90 days before the departure of the cruise. This timeframe shall be extended to 150 days for Expedition Cruise programmes.

Any alteration request aside from the alteration of the 1st cruise shall be subject to the specific allocation conditions set out in Article 10.4 above.

In the case of other services (e.g. air travel), the alteration fees shall amount to the expenses already incurred by Compagnie du Ponant:

##### 10.5 Cancellation fees:

##### For the Expedition Cruises:

• From the registration confirmation date up to 91 days prior to the departure of the Cruise: 25% of the total amount of the Services;

• Between 90 days and 76 days before the departure of the Cruise: 50% of the total amount of the Services;

• Between 75 days and 61 days prior to the departure of the Cruise: 75 % of the total amount of the Services;

• Less than 61 days prior to the departure of the Cruise: 100 % of the total amount of the Services.

##### For other cruise programmes:

• From the registration confirmation date up to 91 days prior to departure: 10% of the total amount of the Services;

• Between 90 days and 61 days before the departure of the Cruise: 25% of the total amount of the Services;

• Between 60 days and 46 days prior to the departure of the Cruise: 50 % of the total amount of

## GENERAL TERMS AND CONDITIONS OF SALE

the Services;

- Between 45 days and 31 days prior to the departure of the Cruise: 75% of the total amount of the Services;
- Less than 30 days prior to the departure of the Cruise: 100 % of the total amount of the Services.

### For the other Services:

No refund shall be granted for any cancellation or waiver of an airline or ground Service included in the contract, or of any service that forms part of the Cruise, for any reason whatsoever.

10.6 In the event that a Traveller is prevented from taking the Cruise by a force majeure event, or due to their death, the Contract shall be terminated via the notice provided by the Traveller or their beneficiaries prior to the execution of the Contract. One quarter of the price of the Contract shall then be payable to CDP. The same conditions shall apply to the family members of a Traveller who was prevented from taking the Cruise by a force majeure event or who has died, and who were meant to be travelling with them.

10.7 A Traveller who does not present themselves at the departure of a Service, or who finds themselves unable to depart, or decides not to depart for any reason whatsoever, including due to a connection delay, cannot claim any refund.

10.8 Once the Services have begun, the Traveller shall be required to pay the full price of the Contract, regardless of the reason that may lead them to decide to waive it.

### **11. Cancellation, interruption, or alteration of the Contract by CDP**

11.1 The arrival and departure times are provided for information purposes and are not definitive. In its capacity as the Organiser of the Cruise, and/or the Carrier, and/or the Vendor of a Package, CDP cannot guarantee that the times will fit in with (air plane and train, etc.) connection timetables.

11.2 CDP may assign travellers different cabins than those initially provided for.

11.3 CDP reserves the right to interrupt a Cruise or to change its itinerary for any reason that it shall consider valid; in this case, CDP cannot be held liable for any loss or harm.

11.4 Specifically in the event of adverse weather conditions, or due to the political or social situation in a port of call country, or due to any other event that may endanger the safety of the Travellers, property, or the ship, or in the event of orders imposed by public authorities, the Organiser of the Cruise, and/or the Carrier, and/or CDP shall have the option to change the itinerary or the ports of call or destination, to delay the trip or to end it, to divert the ship, to tow another ship or to be towed, to transfer the Travellers and their luggage to any other means of transport, even if such transfer results in extending or shortening the length of the programme.

11.5 The ship may provide assistance to any person or property at sea under all circumstances, and cannot be held liable for the consequences of a change to the Cruise programme for that reason.

11.6 Where CDP is required to alter the Cruise after the Travellers have embarked for reasons beyond its control, the Travellers cannot claim any compensation other than the refund of the Services that were not provided and not replaced, or of the unused portion of the Tickets less any expenses incurred, from either CDP, the Carrier, or the Organiser of the Cruise. Conversely, CDP may ask the Travellers to pay a price supplement corresponding to the additional services provided to the Travellers due to an extension of the trip.

11.7 In the case of external events beyond the control of the Organiser of the Cruise, and/or the Carrier, and/or CDP, or for any reason relating to the safety of the Travellers, or of the ship, or due to an insufficient number of participants, CDP may cancel the Cruise, and must inform the Travellers and/or the Organiser of the Cruise, where applicable, by registered letter with acknowledgement of receipt, or via e-mail, or via a press release.

11.8 CDP's Cruises and other Services are subject to a minimum number of participants.

11.8.1 CDP reserves the right to cancel a Cruise up to 21 days prior to departure if the minimum number of Travellers registered is less than or equal to 50% of the ship's "passenger capacity" (200 Passengers for the Expedition Cruise programmes, 244 passengers for the other Cruises on board the Austral, Boréal, Lyrial and Soléal, and 55 passengers for the Le Ponant Yacht).

11.8.2 CDP reserves the right to cancel any other service other than the Cruise if the number of Passengers is less than 20 participants (unless specified otherwise).

11.9 Where CDP is the Organiser of the Cruise, and regardless of the reason for the cancellation, no compensation shall be payable to the Traveller, who shall have a choice between the following solutions: (i) The full refund of the price of the Contract, (ii) another Service at an identical price, (iii) a Service at a lower price, and the refund of the difference in price between the two Services on the basis of the published prices. Travellers must inform CDP of their choice as soon as possible, and in any event prior to the cut-off date mentioned in the cancellation documents.

11.10 The means of transport that are the subject of the Services shall be reserved by CDP in accordance with the terms and conditions of each operator who provides these services. CDP reserves the right to substitute one means of transport for another, or one hotel for another in the same category. In the second case, if the hotel is in a lower category, the excess amount paid shall be refunded to the Travellers.

11.11 All the Services shall be offered within the limit of the places available. If there is no more room in the category proposed, CDP may offer additional places in exchange for a price supplement, depending on availability.

### **12 Liability**

12.1 Where it acts in the capacity of a Sea Carrier, CDP shall be liable for any harm caused to Travellers in accordance with the provisions and compensation limits provided for in the following legislation, depending on their respective scopes of application, namely Articles L. 5421-1 to 5421-8 of the French Transport Code, and (EC) Regulation 392/2009 issued by the European Parliament and Council on 23 April 2009. Where this Regulation is applicable, the compensation limits assigned to the Carrier in the event of death or bodily harm amount to 400,000 drawing rights per Traveller and per event.

12.2 Where it acts in the capacity of a Sea Carrier, CDP shall be liable for any damage caused to luggage in accordance with the provisions and compensation limits provided for in the following legislation, depending on their respective scopes of application, namely Articles L. 5421-9 to 5421-12 of the French Transport Code, Decree No. 67-268 of 23 March 1967, as amended by Decree No. 86-1065 24 September 1986, and (EC) Regulation 392/2009 issued by the European Parliament and Council on 23 April 2009. Where this Regulation is applicable, the compensation limits assigned to the Carrier in the event of loss of or damage to luggage shall be 2,250 special drawing rights for each passenger and trip, while an excess of 149 special drawing rights per Traveller shall be applied in any event. Where (EC) Regulation 392/2009 does not apply, the maximum compensation for loss of or damage to luggage payable by the Carrier shall be €1,520 per Traveller and per trip.

12.3 In any event, where it acts in the capacity of a Sea Carrier, CDP shall benefit from the compensation limits included in the London International Convention of 19 November 1976, as amended by the 1996 Protocol; these limits shall prevail over any other limits determined by legislation where the application is not mandatory.

12.4 Where it operates as the Organiser of the Cruise, CDP shall be liable for any bodily harm or damage to property that occurs on board the ship or in its ancillary facilities or vessels during embarkation or disembarkation, or that occurs during carriage at sea within the same limits and under the same conditions as the Carrier. Where this damage or injury occurs outside such circumstances, but between the beginning and the end of the cruise, the compensation potentially payable to the Traveller by the Organiser of the Cruise and/or CDP shall be capped at 50% of the price of the Cruise.

12.5 Where it is involved in the capacity of the vendor of a fixed-price travel package within the meaning of the French Tourism Code, CDP shall be responsible for any harm or damage caused to Travellers or their luggage within the limits and conditions specified in Article L. 211-16 of said Code.

CDP's liability may specifically not be engaged in relation to the consequences of the following

events:

a) Loss or theft of the Tickets, failure to present the correct documents, or presentation of identity or health documents that are out of date or where the validity period is insufficient (identity card, passport, visas, and vaccination certificates, etc.), or that do not comply with the instructions mentioned in the documents delivered to the Traveller;

b) unforeseeable and unavoidable incidents or events that affect a third party to the travel contract (force majeure events). Where a cancellation is required by circumstances that have the nature of a force majeure event and/or for reasons relating to the security of Travellers, and/or as the result of an injunction issued by a French or foreign administrative authority.

12.6 CDP's liability in its capacity as the Organiser of the Cruise, and/or the Carrier, and/or the Vendor of a Package shall be expressly excluded in the case of non-pecuniary losses, loss of enjoyment and so-called punitive and or similar damages.

12.7 Where a Traveller is not allowed to embark on the ship – including after of during a port call – under the conditions mentioned in Articles 6.3, 6.9 and 6.10, neither CDP, in its capacity as Organiser of the Cruise, and/or the Carrier, and/or the Vendor of a Package, nor the Captain of the ship, nor the crew shall be held liable on any grounds whatsoever.

12.8 CDP shall not be held liable for bodily harm, or damage to property or non-physical damage caused by wars, blockades, riots, strikes, social conflicts, acts of piracy or terrorism, epidemics or periods of quarantine, natural disasters and catastrophes, nuclear fusion, fission, pollution or explosion or its consequences, the closure of the port of departure, of call, or destination, the impounding, requisition, or seizure of the ship for whatever reason, the use of the ship for special Government purposes, or due simply to the threat of the above events. Moreover, it shall not be held liable for any harm caused by the Traveller's deliberate involvement in an affray or in a hazardous activity or action that was not rendered necessary in order to safeguard human life.

12.9 CDP shall not be held liable under any circumstances for any damage caused by the interruption and/or the alteration of the trip as the result of a force majeure event, including, wars, blockades, riots, strikes, social conflicts, acts of piracy or terrorism, epidemics or periods of quarantine, natural disasters and catastrophes, nuclear fusion, fission, pollution or explosion or its consequences, the closure of the port of departure, of call, or destination, the impounding, requisition, or seizure of the ship for whatever reason, the use of the ship for special Government purposes, or due simply to the threat of the above events.

12.10 In the event that CDP is responsible for transporting luggage during a period prior or subsequent to the disembarkation of the ship in its capacity as the Organiser of the Cruise, and/or the Carrier, and/or the Vendor of a Package, it shall act as a representative on the Traveller's behalf, and its liability shall not replace the liability of the carriers who are effectively responsible for transporting the luggage.

12.11 Luggage that is not claimed at the time when the ship or any other means of transport arrives shall remain at the port at the Travellers' expense and at their own risk.

12.12 Any delay in delivering the luggage that inconveniences the Traveller may only give rise to the payment of a compensation amount that cannot exceed 20% of the amount that would be payable in the event of the loss of the luggage stowed in the hold under the terms of Article 11.2. CDP reserves a period of 3 (three) months to look for lost luggage.

12.13 Unless a specific written contractual agreement is in place, ground or air transport, Transfers, water sports and scuba diving from the deck, services included in the Pre- and Post-Cruise Services, Excursions and/or Extensions, excursions on land, including, where applicable, the booking of hotels and restaurants and guided tours when booked from the ship with CDP and invoiced by the latter, are supplied by independent service providers who are neither representatives nor employees of the Organiser of the Cruise, the Carrier, the Vendor of the Package, and/or CDP. Travellers shall use these services at their own risk, and CDP shall only be involved as an intermediary, in its capacity as the Organiser of the Cruise, the Carrier, and/or the Vendor of the Package, and shall not assume or engage any liability for the services, regardless of whether such liability involves bodily harm or damage to property, cancellation, delay or a change of programme.

12.14 Any Traveller who takes part in outside activities as part of the Expedition Cruises agrees to take part in them in good faith and solely at their own risk. In this case, participation engages the liability of each participant, in terms of their physical fitness, their safety, their behaviour, and their comfort. Travellers' attendance at the information briefings provided on board is mandatory. The liability of CDP, its Managing Directors, Directors, officers, crew members, and expedition team members, and the activity leaders cannot be engaged in the event of loss or damage suffered while taking part in outside activities offered during Expedition Cruises under any circumstances.

### **13. Price reviews**

13.1 The prices proposed by CDP are established in accordance with the economic conditions on the day when they are published. These economic conditions include, inter alia, the cost of transportation and fuel, the royalties and taxes relating to the services proposed (entry and/or exit duties in the countries visited, airport or port taxes, embarkation or disembarkation taxes, visa fees, and the cost of admission to tourist attractions), and the exchange rates used when setting the price of the programmes. CDP expressly reserves the right to review its prices. Any change in the cost of transportation and fuel, in taxes, royalties, in the euro and US dollar exchange rates, or special drawing rights and visa fees shall be fully reflected in the price of the trips, including travel agents' commissions, where applicable. Where the French Tourism Code applies, CDP also has the option to lower the Price pursuant to Article L. 211-12 of said Code, on the understanding that, in this case, no pricing review may occur less than 30 business days prior to the scheduled departure date.

13.2 Where the French Tourism Code applies, Travellers shall be informed of any increase in the Price via registered letter with acknowledgement of receipt – or via any other means as long as it enables the effective receipt of the correspondence to be proved – on the basis of a notice period of (30) days prior to the departure date. When they receive this notice, the Passenger and/or the purchaser of the Ticket(s) may cancel their contract and receive an immediate refund of the amount paid by informing the Vendor in writing within a period of 7 (seven) days following receipt of the notice of the price increase.

Any daily surcharge (S) in the case of cruise services only shall be calculated as follows:

$$S = \frac{\text{change in the price of fuel} \times \text{daily consumption}^{**}}{\text{Capacity of the ship}^{***}}$$

(\*) : MGO FOB Rotterdam 0.1% in US\$

(\*\*) : L'Austral, Le Boréal, Le Soléal and Le Lyrial: 20 tonnes; Le Ponant: 5.5 tonnes

(\*\*\*) : L'Austral, Le Boréal, Le Soléal and Le Lyrial: 200 for Expedition Cruises and 244 for the other programmes; Le Ponant: 55

### **14. Travel Insurance**

14.1 The sale of the Services by CDP does not include any kind of insurance.

14.2 CDP offers optional insurance that covers Travellers against the risks of cancellation, and in the event of assistance, repatriation, damage to and loss of their luggage, and medical expenses. These optional insurance policies must be subscribed at the time when the Contract is Signed.

### **15. After-sales**

15.1 Any comment or claim relating to a trip or stay must be sent by registered letter with acknowledgement of receipt, clearly specifying the alleged incident and loss, to either Compagnie du Ponant – 408 avenue du Prado 13008 Marseille, if the Traveller signed their Contract directly with CDP, or to the travel agency that sold them the Services, within a period of one month following the date of their return, subject to the statute of limitations. CDP encourages passengers to fill in the satisfaction questionnaires delivered on board the ship at the end of the Cruise.

15.2 Once they have contacted the After-Sales Departments mentioned in Article 14.1, and failing



a satisfactory reply within a period of 60 days, the Traveller may contact the French Tourism and Travel Mediator, whose details and contact methods are available on the following website: [www.mtv.travel](http://www.mtv.travel).

15.3 Any proceedings initiated by the Traveller against CDP in its capacity as the Organiser of the Cruise, and/or the Carrier must be initiated within a period of 1 (one) year for damage to property and of 2 (two) years for bodily harm, subject to the statute of limitations as from the date when the Traveller disembarked or should have disembarked.

15.4 The statute of limitations for any proceedings against CDP in its capacity as the vendor of a Package shall expire within the timeframe specified by Articles 2224 and 2226 of the French Civil Code.

#### 16. Applicable law & Jurisdiction

16.1 This Contract is governed by French law.

16.2 Only the courts in the area of the Marseille District Court, France, have jurisdiction to hear any proceedings initiated against CDP, its employees, subsidiaries, or sub-contractors, even in the event that third parties are involved.

#### 17. Excerpt from the French Tourism Code:

The information contained in CDP's hard-copy brochures and on the company's website is the prior information provided to the Traveller and provided for by Article L. 211-9 of the French Tourism Code. However, in accordance with Article R. 211-5 of the French Tourism Code, Compagnie du Ponant expressly reserves the right to alter certain items prior to the signing of the Contract.

Excerpt from the French Tourism Code determining the conditions for performance of the activities relating to the organisation and sale of trips or stays:

**Article R. 211-3:** Subject to the exclusions provided for in the third and fourth sub-paragraphs of Article L. 211-7, any offer and sale of travel or accommodation services shall give rise to the delivery of appropriate documents that comply with the rules determined in this section.

In the event of the sale of airline travel tickets or tickets for travel on a regular shipping line, which does not include services relating to this transportation, the vendors shall deliver one or several passenger tickets for the entire trip to the purchaser, issued by the carrier or under their responsibility. In the event of on-request transportation, the name and the address of the carrier on behalf of whom the tickets are issued must be mentioned.

The separate invoicing of the various components of the same travel package shall not release the vendor from the obligations incumbent on them as a result of the regulatory provisions in this section.

**Article R. 211-3-1:** The exchange of pre-contractual information on the availability of contractual terms shall be in writing. This process may take place via e-mail under the validity and performance conditions provided for in Articles 1369-1 to 1369-11 of the French Civil Code. The vendor's name or company name and their address shall be mentioned, together with the number relating to their registration on the register provided for under Sub-Paragraph a) of Article L. 141-3, or, where applicable, their name, address and a number relating to their registration with the association or union mentioned in the second sub-paragraph of Article R. 211-2.

**Article R. 211-4:** The vendor or must disclose information on the price, dates, and the other components of the services provided at the time of the trip or the stay to the consumer prior to the signing of the contract; this information shall include:

- 1) The destination, the means, the characteristic features, and the categories of transport used;
- 2) The accommodation type, its location, its level of comfort and its main characteristic features, its accreditation and its tourism classification in accordance with the regulations or practices of the host country;
- 3) The catering services provided;
- 4) A description of the itinerary where a tour is involved;
- 5) The administrative and health formalities to be performed by French nationals or by nationals of another EU Member State, or of a State that is party to the European Economic Area Agreement, specifically in the event that the crossing of borders is involved, together with the timeframe for performing those formalities;
- 6) The tours, excursions, and other services included in the fixed-price, or that may be available in exchange for a price supplement;
- 7) The minimum or maximum size of the group that will enable the trip or stay to go ahead, as well as the cut-off date for informing the consumer in the event that the trip or stay is cancelled, if the trip or stay going ahead is dependent on a minimum number of participants; that date cannot be set at less than twenty-one days prior to the departure date;
- 8) The amount or the percentage of the price payable as an advance on signing of the contract, as well as the timetable for payment of the balance;
- 9) The terms and conditions for price reviews, as provided for by the contract, pursuant to Article R. 211-8;
- 10) The contractual cancellation terms and conditions;
- 11) The cancellation terms and conditions set out in Articles R. 211-9, R. 211-10, and R. 211-8;
- 12) The information relating to optional subscription to an insurance policy covering the consequences of certain cancellation events, or to an assistance policy covering certain specific risks, including repatriation expenses in the event of an accident or illness;
- 13) Where the contract includes air transport services, the information for each leg of the flight, as provided for in Articles R. 211-15 to R. 211-18.

**Article R. 211-5:** The prior information provided to the consumer shall commit the vendor, unless the vendor specifically has the right to alter certain aspects of that information. In that case, the vendor must clearly specify the extent of that alteration, and which aspects it covers.

In any event, any alterations made to the prior information must be disclosed to the consumer prior to the signing of the contract.

**Article R. 211-6:** The contract entered into by the vendor and the purchaser must be in writing, and drawn up in two copies, one of which shall be given to the purchaser, and signed by both parties. Where the contract is entered into via electronic means, Articles 1369-1 to 1369-11 of the French Civil Code shall apply. The contract must include the following clauses:

- 1) the name and address of the vendor, their guarantor and their insurance company, together with the name and address of the organiser;
- 2) the trip destination or destinations, and the various periods and their dates in the event of a segmented trip;
- 3) the means of transport used, and their characteristic features and categories, and the departure and return dates and locations;
- 4) the accommodation type, its location, comfort level and main characteristic features, and its tourism classification pursuant to the regulations or practices of the host country;
- 5) the catering services provided;
- 6) the itinerary where a tour is involved;
- 7) the tours, excursions or other services included in the total price of the trip or stay;
- 8) the total price of the services invoiced, together with an indication of any potential review of that invoice pursuant to the provisions of Article R. 211-8;
- 9) an indication, where necessary, of the royalties or taxes relating to certain services such as landing disembarkation or embarkation taxes at ports and airports, and hotel taxes when they are not included in the price of the service or services provided;
- 10) the timetable and procedures for payment of the price; the final payment made by the purchaser cannot be less than 30% of the price of the trip or stay, and must be made at the time when the documents enabling the trip or stay to take place are delivered;
- 11) the special terms and conditions requested by the purchaser and accepted by the vendor;

12) the procedures according to which the purchaser may lodge a claim against the vendor on the grounds of their failure to execute, or their poor execution of the contract; this claim must be made as soon as possible, via any means that enables an acknowledgement of receipt by the vendor to be obtained (fax, e-mail, or registered letter with acknowledgement of receipt), and, where applicable, mentioned in writing to the organiser of the trip and to the service provider concerned;

13) the cut-off date for informing the purchaser in the event that the trip or stay is cancelled by the vendor if the trip or stay going ahead is dependent on a minimum number of participants, in accordance with the provisions of Sub-Paragraph 7) of Article R. 211-4;

14) the contractual cancellation terms and conditions;

15) the cancellation conditions provided for in Articles R. 211-9, R. 211-10, and R. 211-11;

16) further information regarding the risks covered, and the amount of the cover provided by the insurance policy covering the consequences of the vendor's professional third-party liability;

17) information regarding the insurance policy covering the consequences of certain cancellation cases subscribed by the purchaser (policy number and name of the insurance company), together with the information regarding the assistance policy covering certain specific risks, including repatriation expenses in the event of an accident or illness; in this case, the vendor must give the purchaser a document specifying the risks covered and the risks excluded, at the very least;

18) the cut-off date for informing the vendor in the event that the purchaser transfers the contract;

19) an undertaking to provide the following information to the purchaser, at least 10 days prior to their scheduled departure date:

a) the name, address, and telephone number of the vendor's local representative, or else, the names, addresses, and telephone numbers of local organisations likely to assist the consumer in the event of a problem, or else the telephone number enabling emergency contact to be made with the vendor;

b) in the event of trips and stays abroad involving minors, a telephone number and an address that enables direct contact with the child or the person in situ responsible for their stay to be established;

20) the clause governing the cancellation and refund, free of charge, of the amounts paid by the purchaser in the event of non-compliance with the information obligation provided for in Sub-Paragraph 13) of Article R. 211-4;

21) the undertaking to inform the purchaser of the departure and arrival times in good time prior to the beginning of the trip or the state.

**Article R. 211-7:** The purchaser may transfer their contract for the trip or stay to a transferee who meets the same conditions as them, as long as the contract has not taken effect. Unless the transferor benefits from a more favourable clause, they are required to inform the vendor of their decision via any means that enables an acknowledgement of receipt to be obtained (fax, e-mail, or registered letter with acknowledgement of receipt) at least seven days prior to the beginning of the trip. This deadline shall be extended to 15 days where it involves a cruise. This transfer shall not be subject to prior authorisation by the vendor under any circumstances.

**Article R. 211-8:** Where the contract includes an express price review option, within the limits provided for in Article L. 211-12, it must mention the specific calculation procedures for the price changes, in the case of both increases and decreases, and specifically the amount of the transportation expenses and related taxes, the currency or currencies that may have an impact on the price of the trip or the stay, the portion of the price to which the change applies, and the exchange rate for the currency or currencies used as a benchmark when determining the price shown in the contract.

**Article R. 211-9:** Where the vendor finds themselves required to alter one of the key aspects of the contract prior to the purchaser's departure, such as by significantly increasing the price, and where they ignore the information obligation mentioned in Sub-Paragraph 13) of Article R. 211-4, the purchaser may take the following measures, without prejudice to any appeals for compensation for the loss that they may suffer, and once they have been informed by the vendor via any means that enables an acknowledgement of receipt to be obtained (fax, e-mail, or registered letter with acknowledgement of receipt, etc.):

- either cancel the contract and obtain immediate repayment of the amounts paid with no penalty;
- or accept the change or the substitute trip proposed by the vendor; in that case, an amendment to the contract specifying the alterations made shall then be signed by the parties; any price decrease shall be deducted from the amounts that may remain payable by the purchaser, and if the payment already made by the latter exceeds the price of the altered service, the excess amount must be returned to them prior to their departure date.

**Article R. 211-10:** In the event provided for in Article L. 211-14, where the vendor cancels the trip or the stay prior to the purchaser's departure, they must inform the purchaser via any means that enables an acknowledgement of receipt to be obtained (fax, e-mail, or registered letter with acknowledgement of receipt, etc.); the purchaser shall then obtain immediate repayment of the amounts paid from the vendor without any penalty, without prejudice to any claims for compensation for any loss that they may have suffered; in this case, the purchaser shall receive a compensation amount that is at least equal to the penalty that they would have paid if they had been responsible for the cancellation on this date.

The provisions of this article shall not prevent the reaching of an amicable agreement with a view to the purchaser accepting a replacement trip or stay offered by the vendor under any circumstances.

**Article R. 211-11:** Where the vendor finds themselves unable to provide a major portion of the services provided for in the agreement, and which account for a significant percentage of the price paid by the purchaser after the latter's departure, the vendor must immediately take the following measures, without prejudice to the claims for compensation for any losses that may have been suffered:

- either offer services as a replacement for the services provided for, and potentially bear any additional cost, and, if the services accepted by the purchaser are of a lower quality, the vendor must refund the price difference to them as soon as they return;
- or, if they cannot offer any replacement service, or if that service is refused by the purchaser on valid grounds, provide the purchaser with transportation tickets enabling them to return to their place of departure under conditions that may be considered as equivalent, or to another place agreed by both parties, at no additional cost.

The provisions of this article shall apply in the event of non-compliance with the obligation provided for in Sub-Paragraph 13) of Article R. 211-4.

**Article R. 211-12:** The provisions of Articles R. 211-3 to R. 211-11 must be included in the brochures and the travel contracts offered by the persons mentioned in Article L. 211-1.

**Article R. 211-13:** The purchaser can no longer claim the benefit of the clause provided for under Sub-Paragraph 20 of Article R. 211-61 once the service has been provided.



La Compagnie du Ponant sign The Travel Charter and adheres to « la charte bleue » d'Armateurs de France.

### 1 - The rates of our cruises are per person and include the following:

- All meals while on board the ship (from dinner on the day of embarkation to breakfast on the day of disembarkation).
- Captain's welcome cocktail and gala dinner.
- "Open Bar" (pouring wines, house champagne, alcohol except premium brands...list available upon request).
- Evening entertainment and events.
- Room service 24h (special selection).
- English speaking lecturer on selected sailings identified by "lecturer on board" logo.
- Water sports activities (except scuba diving) using the ship's equipment, when permitted by local authorities and confirmed by ship Master according to safety and sea conditions onsite.
- Highly experienced bilingual (French-English) Expedition team for all cruises identified with "Expedition" logo.
- Parc entry fees into protected areas.

### 2- The rates of our cruises don't include:

- Pre or post cruise programmes, overland programmes or shore excursions mentioned in the cruise brochure and detailed on [www.ponant.com](http://www.ponant.com).
- Airport taxes (other than the ones included).
- Port and safety taxes.
- Visa expenses (which may include additional administrative charges imposed by the authorities of a country) and/or immigration reciprocity taxes if applicable.
- Luggage handling.
- Gratuities to onboard crew, local guides and drivers.
- Optional Spa package to be booked prior to your departure.
- Beverages other than the ones mentioned.
- Laundry services, hair salon and à la carte Spa treatments.
- Personal expenses, on board medical consultations and drug prescriptions.
- Cancellation/luggage/assistance/repatriation/medical insurance(s).

### 3-Ground services

Services to the port of departure, transfers to the ship, including, as applicable, hotel room and restaurant bookings or guided tours, are performed by independent suppliers who are not employees of Compagnie du Ponant. In this respect, Compagnie du Ponant acts only as an agent and shall not be held liable for said services or for the acts or omissions of sub-contractors or other contractors. The passenger agrees that Compagnie du Ponant acts as agent and/or trustee for any person including ground and maritime agents and subcontractors, who provide any service forming, or in connection with, any part of the cruise.

On International flights, check-in luggage is limited to 23kg/50lbs and 8kg/17lbs per person for carry-on luggage (besides airlines frequent flyer advantages). On regular domestic flights check-in luggage limits are between 15 and 20 kg/33 to 44lbs and 5 to 8kg/17lbs per person for carry-on. On Compagnie du Ponant private charter flights, check-in luggage is limited to 23 kg/50lbs and 5kg/11lbs maximum per person as carry-on. We thank you for taking these restrictions into account. Airline carriers charge for extra weight and sometimes refuse, for strict security reasons, to check-in overweight and oversized luggage. Compagnie du Ponant and the airline carriers waive all liability for luggage with extra weight that is refused at the check-in.

### 3.1 Ground activities included during expedition cruises itself:

By choosing an expedition cruise, passengers agree to follow the rules of good conduct presented by the expedition team during the cruise.

We remind you that being properly equipped is essential (clothing, sunglasses, etc.) and we recommend bringing binoculars to enable you to observe the wildlife comfortably and respectfully during your excursions and shore visits.

### 3-2 Pre and post-cruise programmes and pre bookable tours

Pre and Post-cruise programmes (as detailed on [www.ponant.com](http://www.ponant.com)), pre bookable tours and shore excursions are performed by independent suppliers who are not employees of Compagnie du Ponant. In this respect, Compagnie du Ponant acts only as an agent and shall not be held liable for said services or for the acts or omissions of sub-contractors or other contractors. The passenger agrees that Compagnie du Ponant acts as agent and/or trustee for any person including ground and maritime agents and subcontractors, who provide any service forming, or in connection with, any part of the cruise.

Hotel accommodations are based on 4 and 5-star rated hotels. Official check-in time is 4pm, check-out time is 11am unless early check-in or late check-out supplement are paid.

Travellers are advised to check all the information with the authorities concerned prior to the departure date. CDP advises Travellers to consult the country factsheets relating to the chosen destinations. CDP specifically draws Travellers' attention to the fact that the information provided may change up until the departure date, and they are advised to consult that information up until the time of departure. CDP invites Travellers to adjust their behavior to the visited country, to exercise vigilance and to avoid carrying valuable objects during their travel.

### 3.3 Shore excursions

Unless otherwise noted, shore excursions are sold and charged on board and are ruled by general conditions that apply to the contract signed with the local tour operator and the relevant national regulations. The passenger agrees that CDP acts as agent and/or trustee for any person including ground and maritime agents and subcontractors, who provide any service in connection with any part of the cruise.

Excursions can involve activities that may not suit persons with disabilities. Prices are only given as an indication and may change. Before departure, you will receive a tour program detailing the excursions on offer with the latest rates. Five months before cruise departure, shore excursions can also be viewed on [www.ponant.com](http://www.ponant.com). Shore excursions are currently only bookable onboard. In the event of an excursion being cancelled due to a technical reason, shortage of participants or a case of force majeure, the client will not be eligible for any compensation. Please note that you will not be reimbursed for excursions if you cancel after registration. Any meals offered during excursions are simple and should not be compared to the standards on board the ship.

# INSURANCE



## FOR YOUR SAFETY AND YOUR COMFORT, SUBSCRIBE TO AN EXCLUSIVE PONANT INSURANCE POLICY

The guarantees available are subject to a premium of 4% of the total cost of your cruise for an amount up to 25,000 euros per person, or a premium of 5.5% of the total cost of your cruise for an amount of between 25,001 and 50,000 euros. The Ponant Insurance Contract offers more extensive guarantees than those you already have or believe you have. It is perfectly adapted to the characteristics of your trip.

### **CRUISE CANCELLATION INSURANCE**

- Cancellation for "All justified reasons"
- Cancellation because of a natural disaster or terrorist attack at the destination
- Cancellation as a result of a strike by the airline that should take you to your cruise

### **"MISSED THE SHIP" INSURANCE**

- To allow you to join the ship at the next port of call or for an early return

### **LUGGAGE INSURANCE**

- Up to €3,000 per person
- If your luggage arrives late, you will have €400 to buy emergency supplies

### **MEDICAL ASSISTANCE AND REPATRIATION**

- Medical costs in Europe and the Mediterranean Basin €75,000
- Medical costs in the rest of the world €150,000

### **REIMBURSEMENT OF UNUSED SERVICES**

- Should you have to return home early, up to €50,000

### **COMPENSATION CRUISE**

- Following medical repatriation, up to €25,000

### **PASSENGER CIVIL LIABILITY INSURANCE**

- Physical injury up to €4,600,000
- Material and immaterial damage up to €46,000

### **"UNABLE TO GET HOME" INSURANCE**

- €150 per person from the second night (maximum 6 days)

### **PRICE GUARANTEE** Up to €150 per person

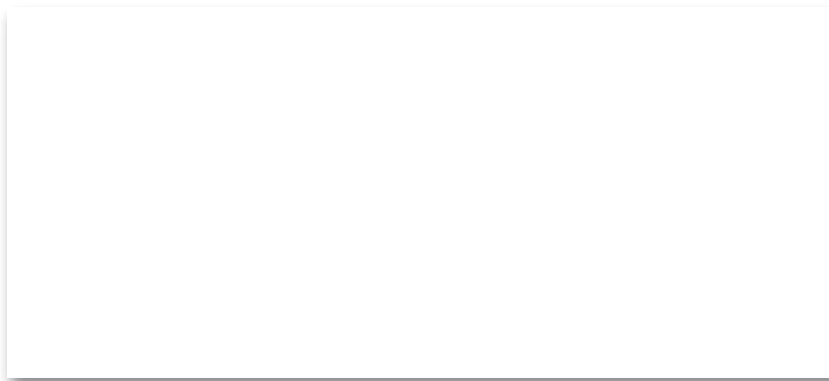
- In the event of an increase in port or airport taxes
- In the event of currency fluctuation
- In the event of a fuel surcharge

If the insured lives in a country other than one of the member countries of the European Union, the Overseas Departments and Regions, Overseas Collectivities and inhabited sui generis collectivities, Monaco, and Switzerland, **The Company** may, at the insured's request, repatriate him/her to his/her home or to the Hospital that is closest, best equipped or most specialised. In this case the insured undertakes to pay **The Company** the difference between the cost of his/her repatriation and a repatriation carried out in the same circumstances in Metropolitan France.

This information is an extract of the full guarantees and is not legally binding.

As with all insurance policies, this contract includes excesses, limits, and duties in the event of an incident. Contract details are available in full from Ponant on request.





FOLLOW US ON THE SOCIAL NETWORKS



facebook.com/ponant



Instagram : #ponantcruises



Pinterest : #ponantcruises



Youtube : PonantCroisieres



408 Avenue du Prado - 13008 Marseille - France

[www.ponant.com](http://www.ponant.com)

Licence 013060005 - Member of SNAV and the APS