

# LATIN AMERICA & CARIBBEAN COLLECTION

---

WINTER CRUISES 2017 - 2018



PONANT  
YACHT CRUISES & EXPEDITIONS



# EDITO





# Sail to Eldorado

Literally, the "golden one". From Latin America to the Caribbean, board one of our yachts in Winter 2017-2018 and sail towards the sunshine of these remote lands of adventure, once believed to be a treasure trove of gold and the subject of so many captivating explorers' tales.

Paradise islands, exceptional cultural heritage, wilderness areas, historic sites with fabulous legends – from the Panama Canal to Patagonia, the idyllic beaches of the Caribbean to mythical Cape Horn, PONANT has created a series of magnificent itineraries for you.

Sail to the heart of the Chilean fjords, dive into the turquoise waters of the Grenadines, perfect your putt on a Golf cruise or follow the traces of pre-Colombian civilizations - PONANT will fulfill your desire to see something new, while maintaining aboard that perfect alchemy of five-star comfort and adventure, authenticity and refinement.

To add the finishing touch to your trip, superb shore-based programs, organized before, during or after your cruise, will take you further into this continent of exceptional cultural wealth and its many UNESCO World Heritage sites.

Much more than just a cruise, it is a voyage rich in emotion that awaits you, so many unique experiences that our passengers have been enjoying for the last 30 years.

So now, we leave you to admire the evocative landscapes in these pages that maybe, one day, you will be seeing for real during one of your yacht's stopovers.

*See you on board very soon.*







# SUMMARY

---

SAILING IN LATIN AMERICA WITH PONANT.....	6
<i>LE BORÉAL &amp; LE SOLÉAL</i> .....	8
LONGING FOR LATIN AMERICA .....	10
YOUR CRUISES IN LATIN AMERICA.....	11
SAILING IN THE CARIBBEAN WITH PONANT .....	28
<i>LE PONANT</i> .....	30
LONGING FOR THE CARIBBEAN .....	32
YOUR CRUISES IN THE CARIBBEAN.....	33
STATEROOMS & DECKS PLANS.....	44
PRICE LIST.....	48
TERMS OF SALES.....	50
INSURANCE.....	55





# Sailing in Latin America with PONANT

Do you have a different vision of travel? Does it involve moving from destination to destination and country to country without having to pack and unpack your suitcase each time? Set sail with PONANT for an exceptional cruise to discover Latin America, a land of contrasts stretching from the Equator to the lower latitudes of the far South.

Because cruising does not mean just seeing the coastline and skimming the shores of a distant land, PONANT offers you another perspective with our program of shore excursions that are rich in culture and sensations. Enjoy the must-see sites of Latin America and the Caribbean as we drop anchor in carefully selected ports of call.

Whether you are interested in the vestiges of mysterious pre-Colombian civilizations, the rich architectural heritage of the colonial period or the observation of exceptional wildlife, our pre-and post-cruise programs, overlands and excursions will fulfil all your needs.

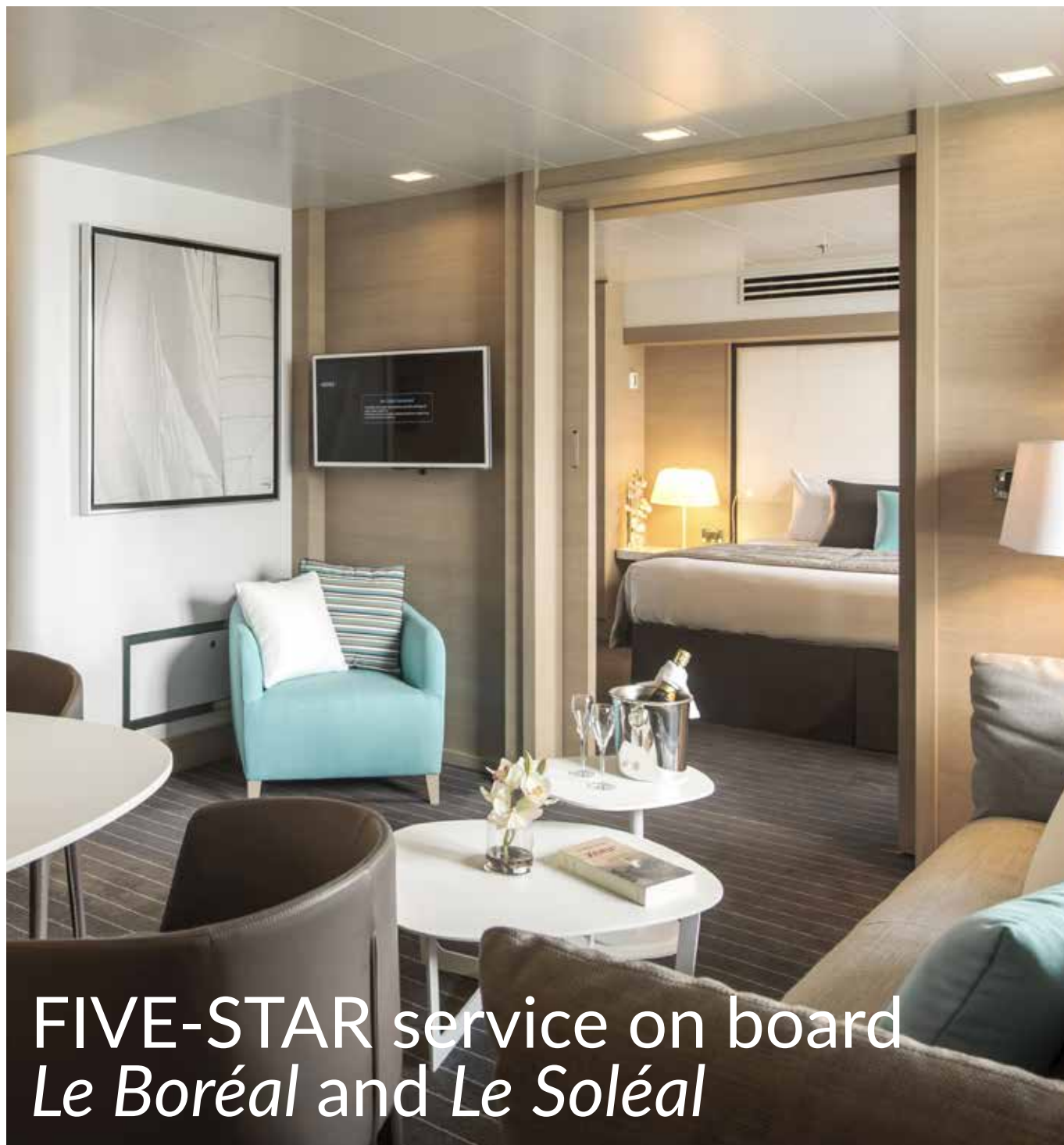
As a privileged passenger, choose your cruise and set sail aboard *Le Soléal* or *Le Boréal* to discover this authentic and welcoming continent of vast open spaces.



## THE "PONANT" SIGNATURE AT THE HEART OF LATIN AMERICA

- **7** cruises travelling through **8** countries: Nicaragua, Costa Rica, Panama, Ecuador, Peru, Chile, Colombia, Venezuela.
- **17** ports of call listed as UNESCO World Heritage Sites.
- **4** major pre-Columbian era sites.
- 2 Five-star Expedition cruises aboard ultra-modern ships, a blend of elegance, luxury and cutting-edge technology.
- "Cleanship" certified ships that are respectful of the environment in national parks & nature reserves.





## FIVE-STAR service on board *Le Boréal* and *Le Soléal*

### A modern fleet

These two vessels are sisterships and are the perfect size for sailing along the Pacific coast of Latin America, from the Panama Canal to Cape Horn.

Fluid lines, which let in light and provide views of the water: the exterior lines of *Le Boréal* & *Le Soléal* reflect the spirit of a subtly revisited nautical theme.

On board, an elegant selection of fine materials in discreet and soothing shades gives a unique style that is both contemporary and inviting.

Limited capacity, unique atmosphere, secluded destinations: at a time when giant cruise ships abound, PONANT has chosen to remain true to its philosophy by developing an ultra-modern but always moderately-sized fleet. Thus *Le Boréal* and *Le Soléal* boast only 132 cabins and suites. The perfect blend of luxury and cutting-edge technology.

Because we are convinced that a responsible approach is required in our quest for excellence, PONANT chose to equip its sisterships with efficient equipment. As a result, they have all been awarded the international "Clean Ship" label.



## Outstanding comfort and gastronomic cuisine

On board, whichever cruise you take, you will experience the exceptional conditions of comfort and service that are PONANT's hallmark: breakfast among friends with the horizon as your special guest, a sun-kissed lunch on one of our outside decks, or a delicious dinner in the elegant setting of our restaurants with their intimate atmosphere, you will appreciate the French touch that naturally gives pride of place to discreet service and excellent cuisine.

Our products are carefully selected, the service is elegant and discreet, and our talented chefs showcase their expertise by bringing out the very best in local flavours. You will enjoy our refined and varied cuisine, accompanied by a selection of fine wines presented by our expert sommeliers, in a setting that is worthy of the top French restaurants.



## Total well-being and relaxation

In partnership with the French beauty institute SOTHY'S Paris™, our Spa invites you to pamper yourself with a beauty session or massage aboard your ship. Indulge in a moment of total relaxation after having made good use of the gym, its plate glass windows giving unbroken views of the sky and the sea.



## Attentive service

A Butler service is provided for passengers travelling in the suites on Deck 6, offering you a tailor-made and effortless cruise. Attentive and discreet, your Butler will provide a personalized daily service and meet all your desires efficiently and discreetly.

*A cruise that is the embodiment of refinement, just like being aboard your own yacht.*



# LONGING FOR LATIN AMERICA

## Discover pre-Colombian sites

Chile, Peru, Guatemala - so many heady destinations, fascinating countries, "promised lands" of pre-Colombian archeology, with their Maya and Inca remains. Specially designed to allow you to discover the unmissable sites of these ancient civilizations, our cruise and our shore-based programs offer you a true concentration of history and culture, showcasing many of the magnificent UNESCO sites in the region. Taking in the pyramids of Tikal, Machu Picchu, the Chan Chan temple or the mysterious geoglyphs, discover the history of these still-mysterious peoples.

**Departures:** October 14<sup>th</sup> & 23<sup>rd</sup>, 2017; March 20<sup>th</sup> & April 1<sup>st</sup>, 2018.



## Admire the rich colonial heritage

Cuzco, Lima and Arequipa in Peru, Granada in Nicaragua, Quito and Cuenca in Ecuador, Antigua, Cartagena: These colonial cities with their flamboyant Baroque heritage will punctuate your PONANT itineraries. Founded from the 16<sup>th</sup> century onwards, these cities, churches and the sumptuous homes of the nobility, decorated with elaborately carved balconies, are an attractive and creative alliance of European inspiration and the richness of indigenous styles. In the heart of the Andes, discover these magnificent examples of the blending of Inca culture and Baroque architecture.

**Departures:** October 23<sup>rd</sup>, 2017; March 20<sup>th</sup> & April 1<sup>st</sup>, 2018.



## Observe exceptional wildlife

Discovering Latin America means getting as close as possible to its varied wildlife in their spectacular natural environments. From Central America to the Southern lands, between national parks, fjords and glaciers, set out to encounter some of the richest ecosystems in the world and their often endemic animal species. Llamas, condors, red macaws in the heart of the tropical rainforest, or sea turtles, without forgetting the humpback whales and sea lions of Patagonia. Nature, clad in its finery, will offer you its wonders – come and see it!

**Departures:** November 1<sup>st</sup>, 2017; March 07<sup>th</sup> & 20<sup>th</sup>, 2018; April 1<sup>st</sup> & 14<sup>th</sup>, 2018.



## Go on a 5-star expedition

Experience an Expedition under the sign of comfort and discovery! Our naturalist-guides will share their expert knowledge of the plant and wildlife, the local cultures... Shore visits in Zodiac® dinghies are organized to take you as close as possible to the regions visited. Our Zodiac® dinghies are designed to accommodate small groups of 10 passengers. They are easy to step on to from the rear of your ship and enable fast and safe landings. Aboard, cultural and historical conferences are organized to extend the pleasure.

**Departures:** November 1<sup>st</sup>, 2017; March 07<sup>th</sup>, 2018.







## YOUR CRUISES IN LATIN AMERICA

DATE	SHIP	ITINERARY	NIGHTS	PAGE
October 14 <sup>th</sup> , 2017	<i>Le Soléal</i>	Colon • Callao	9	PANAMA & PRECOLUMBIAN TREASURES ..... p12
October 23 <sup>rd</sup> , 2017	<i>Le Soléal</i>	Callao • Valparaiso	9	ALONG THE ANDES CORDILLERA..... p14
November 01 <sup>st</sup> , 2017	<i>Le Soléal</i>	Valparaiso • Ushuaia	13	CHILEAN FJORDS & PATAGONIA..... p16
March 07 <sup>th</sup> , 2018	<i>Le Boréal</i>	Ushuaia • Valparaiso	13	CHILEAN FJORDS & PATAGONIA..... p16
March 20 <sup>th</sup> , 2018	<i>Le Boréal</i>	Valparaiso • Guayaquil	12	CORDILLERA & ANDEAN SECRETS ..... p18
April 01 <sup>st</sup> , 2018	<i>Le Boréal</i>	Guayaquil • Colon	13	TREASURES OF CENTRAL AMERICA..... p20
April 14 <sup>th</sup> , 2018	<i>Le Boréal</i>	Colon • Fort-de-France	7	BETWEEN PANAMA & MARTINIQUE ..... p22

# PANAMA & PRECOLUMBIAN TREASURES

*Set sail aboard Le Soléal and enjoy a unique experience crossing from one ocean to another via the famous Panama Canal. Further on, fall under the spell of the unspoiled Pearl Islands and the magnificent beaches of the rugged coastline of Ecuador, before charting a course towards Peru, the legendary land of the Incas.*



## COLON • CALLAO

Aboard Le Soléal

From October 14<sup>th</sup> to 23<sup>rd</sup>, 2017 (9 nights)

From € 2 510

### HIGHLIGHTS

- UNESCO sites: the fortifications along the Caribbean coast from Panama to Portobelo; the Chan Chan archeological site; Quito; Cuenca; Machu Picchu; the historic center of Lima.
- The opportunity to sail from one ocean to another by crossing the mythical Panama Canal.
- Exceptional encounter with the Embera people, who are strongly attached to their traditions and their ancestral way of life.
- Lima and its exceptional architectural heritage from colonial times.
- Lecturer chosen for his/her area of expertise.

UNESCO

## CUZCO & MACHU PICCHU

From Callao, the port of Lima, do not miss a visit to Cuzco, the imperial city of the great Inca, Pachacutec. From the Inca fortress of Sacsayhuamán, you will overlook this incredible city, combining Inca ruins and Baroque churches and palaces from colonial times. Then, continue towards the UNESCO World Heritage site of Machu Picchu. This sanctuary, of exceptional cultural and natural value, is encircled by the spectacular Andes Mountains, lying at some 2,400 meters altitude. The mythical "Lost City of the Incas" with its terraced fields and its *Sun Temple* will not fail to fascinate you, and you will be able to recite the verses composed by Pablo Neruda, the great Chilean poet: "*Machu Picchu is a journey to the serenity of the soul, to eternal merging with the cosmos...another miracle*"



## THE EMBERAS

When you call at Forte Amador, we invite you to go back in time and meet the Emberas Indian tribe. Away from the modern world, the Emberas have managed to preserve their traditions and their ancestral way of life, and will initiate you into it with pride. As soon as you arrive in Chagres National Park, you will take a seat in a traditional dugout boat called a piragua and travel up-river. Little by little, huts start to appear, emerging from the vegetation, and the village chief will welcome you to his wild and pristine lands. In order to perfect this magical experience, you will watch traditional ancient dances before learning more about the customs of this very endearing tribe.





## MOGO MOGO, THE PEARL ISLANDS

On our way to Ecuador, *Le Soléal* will stop in the Pearl Islands, which nestle in the Gulf of Panama. These precious islands earned their name in the 16<sup>th</sup> century when the Spanish Conquistadors discovered the many pearl oysters there – the wealth of the indigenous Indians who lived on the islands at the time. It is within this archipelago composed of over 200 islands that the "La Peregrina" pearl was discovered. It is renowned for its perfection and although most recently it belonged to Elizabeth Taylor, several kings and queens of Europe had owned it in the past. At the heart of this paradise, discover Mogo Mogo, a secret desert island whose turquoise waters are home to exceptional sea life.



## PANAMA CANAL

Aboard *Le Soléal*, experience something unique: sailing through the Panama Canal, which has inspired the imagination of numerous adventurers in the 20<sup>th</sup> century. Construction of the canal started in 1880 under the direction of Ferdinand de Lesseps, and experienced many ups and downs, before being completed by the United States in 1914. The canal crosses the Isthmus of Panama and links the Atlantic Ocean to the Pacific Ocean. It includes three levels of locks and by raising ships to the level of Lake Gatunpar, almost as if the water was a lift, it allows them to avoid having to round Cape Horn. From the Miraflores Locks, you will have an unobstructed view of any port operations underway as well as of the ships of all sizes that seem to float between the trees.



## COLON • CALLAO

Le Soléal - From October 14<sup>th</sup> to 23<sup>rd</sup>, 2017  
10 days / 9 nights



### DAY ITINERARY

- | DAY  | ITINERARY  |
|------|--|
| D 1  | <b>Colon (Panama)</b><br>Embarkation from 16.00 to 17.00 |
| D 2  | Crossing the Panama Canal                                |
| D 3  | Fuerte Amador (Panama)<br>Mogo Mogo (Panama)             |
| D 4  | At sea   |
| D 5  | At sea   |
| D 6  | ♥ Guayaquil (Ecuador)                                    |
| D 7  | At sea   |
| D 8  | Salaverry (Peru)   |
| D 9  | Callao (Peru)  |
| D 10 | <b>Callao (Peru)</b><br>Disembarkation.                  |

♥ **OVERLANDS:** Quito or Cuenca from Guayaquil. See page 25.

### COMPLIMENTARY EXCURSIONS (see details page 26)

### YOUR PRE-CRUISE PROGRAM (from Colon)

- Colonial Panama and Miraflores locks (2 days/1 night)  
Price per person: from € 290.

### YOUR POST-CRUISE PROGRAMS (from Callao)

- Precolombian Art & Archeology (1 day)  
Price per person: from € 150
- Machu Picchu, sacred land of the Incas (4 days/3 nights)  
Price per person: from € 2 230.

For more information about your pre / post programs and prices, please consult [www.ponant.com](http://www.ponant.com) or your travel agent.

# ALONG THE ANDES CORDILLERA

*From Callao, set off to discover the Pacific coast of South America by visiting Peru, the ancient land of the Incas. Then, between ocean and cordillera, Chile will surprise you, the “pais longilíneo”, lauded by the Nobel Prize winning poet Pablo Neruda, a strange and fascinating country.*



## CALLAO • VALPARAISO

Aboard Le Soléal

From October 23<sup>rd</sup> to November 01<sup>st</sup>, 2017 (9 nights)

From € 2 280

### HIGHLIGHTS

- UNESCO sites: historic center of Lima, Arequipa and Valparaíso. The Santa Catalina Monastery; the Nazca Lines and geoglyphs (optional excursion).
- An optional visit to the Historic Sanctuary of Machu Picchu and the Humberstone and Santa Laura Saltpeter Works from Iquique is available.
- Presence of experienced lecturers, chosen for their expertise.

UNESCO

## PISCO: THE NAZCA LINES

*Le Soléal* will call at Pisco and offer you the possibility to take a flight over the enigmatic and mysterious Nazca Lines. The 450 km<sup>2</sup> of archaeological enigmas, whose size and sheer number have fired the imagination for decades, can only be seen in their true splendor from a certain altitude. Discovered in 1926, these very precise outlines drawn in the arid earth of the Peruvian plain represent living creatures such as lizards, monkeys, spiders and whales, plants and intertwined geometric figures, and to this day have yet to reveal their secrets, despite the many scientific studies dedicated to them. Try to resolve one of the greatest enigmas of Humanity when you fly over these exceptional vestiges of a vanished civilization, or indeed, simply fall under the spell of the legend!



## CHILE

Magnificent, little-known, secret and preserved, Chile extends its natural beauty over almost 4,300 km from North to South, revealing its glories to travelers who are lovers of the great outdoors. During your cruise aboard *Le Soléal*, let yourself be surprised by the magic and diversity of the Chilean landscapes. With 2,000 snow-capped volcanoes, the Atacama desert – the driest in the world –, the *salares* scattered with pink flamingoes, forests and vineyards, majestic glaciers, without forgetting Tierra del Fuego in Patagonia and the sublime Andes cordillera, Chile is a land of harmonious contrasts.



## ARICA

Located at the gateway to the Atacama desert, Arica, the Southernmost town in Chile, owes its reputation to the richness and beauty of its landscapes: long white sandy beaches edging the Pacific, millennial geoglyphs, arid valleys of the cordillera foothills, fertile altiplano and dormant volcanoes are just some of the sites that this visit has in store for you. Then, let yourself be swept back in time and discover the culture, traditions and mummies of the Chinchorro people, this Indian civilization, some 7,000 years old, which was the first in the world to develop mummification techniques. In town, the Cathedral and the former customs house, both designed by Gustave Eiffel, give the city a certain French "je ne sais quoi".



UNESCO

## MATARANI - AREQUIPA

When we drop anchor in Matarani, discover Arequipa, an old colonial city whose many whitewashed buildings have earned it the nickname "white city". With their rich heritage of legends, the Arequipenos say, rather poetically, that the moon forgot to take their town when it was separated from the earth! Then stroll through the vast maze of flower-bedecked courtyards of the Santa Catalina Convent, its winding streets with their Andalusian names and powder blue walls. Built in the 16<sup>th</sup> century and a UNESCO World Heritage site, the cloister, which was home to 450 reclusive Carmelites, only recently opened its doors to the public, after four centuries of total isolation. A photographer's paradise, this architectural masterpiece is home to the finest examples of Hispano- American religious art.



## CALLAO • VALPARAISO

Le Soléal - From Oct. 23<sup>rd</sup> to Nov. 01<sup>st</sup> 2017

10 days / 9 nights



### DAY ITINERARY

- D 1 **Callao (Peru)**  
Embarkation from 16.00 to 17.00
- D 2 ♥ **Pisco (Peru)**
- D 3 **At sea**
- D 4 **Matarani (Peru)**
- D 5 **Arica (Chile)**
- D 6 **Iquique (Chile)**
- D 7 **At sea**
- D 8 **Coquimbo (Chile)**
- D 9 **Valparaiso (Chile)**
- D 10 **Valparaiso (Chile)**  
Disembarkation.

♥ **OVERLAND** : Nazca Lines from Pisco. See page 25.

### COMPLIMENTARY EXCURSIONS

(see details page 26)

## YOUR PRE-CRUISE PROGRAMS

(from Callao)

- **Colonial Lima** (1 day/1 night)  
Price per person: from € 310.
- **Machu Picchu** (4 days/ 4 nights)  
Price per person: from € 2 570.

## YOUR POST-CRUISE PROGRAMS

(from Valparaiso)

- **From Valparaiso to Santiago** (2 days/1 night)  
Price per person: from € 520.
- **Atacama desert** (4 days/3 nights)  
Price per person: from € 2 290.

For more information about your pre / post programs and prices, please consult [www.ponant.com](http://www.ponant.com) or your travel agent.

# CHILEAN FJORDS & PATAGONIA

*Aboard Le Boréal or Le Soléal, discover the extreme South of the American continent during an unforgettable cruise between glacier valleys, colourful towns and natural parks. You will have the privilege of rounding the mythical Cape Horn and sailing the Chilean fjords. Further on, the villages of Patagonia, as well as the abundant and varied wildlife, will create wonderful memories of this trip.*



## EXPEDITION IN THE CHILEAN FJORDS

Your ship will chart a course towards the South of Chile, to archipelagos and torturous fjords where majestic glaciers seem to meet the ocean. This remote setting is remarkable for the splendor of its sea scattered with islands, and its slow and powerful glaciers that have been transforming and reshaping the landscapes over centuries. During some stopovers, you will have many opportunities to set out aboard our Zodiac® dinghies, piloted by your naturalist guides, to get as close as possible to this untamed natural world, where the presence of human beings is almost imperceptible.

## CAPE HORN & ZODIAC® OUTINGS

*"When Le Soléal lowers its anchor at the foot of Hornos Island, our enthusiasm is at its peak. Clad in our life jackets, we board the Zodiac® dinghies and set out for a short journey to the shores of the island. As soon as our feet touch the ground, our naturalist guide takes us to admire the famous "Cape Horn Memorial", built in the shape of an albatross in tribute to the sailors who crossed this difficult passage.*

*Our Captain then informs us that Le Soléal is about to sail around Cape Horn. At 5.30pm we have made it – at the very same spot that was discovered in January 1616 by two Dutch sailors who gave the name of their home town to this 400m high cliff!"*

**A passenger's account.**

## VALPARAISO • USHUAIA

Aboard Le Soléal

From November 01<sup>st</sup> to 14<sup>th</sup>, 2017 (13 nights)



From € 4 160

## USHUAIA • VALPARAISO

Aboard Le Boréal

From March 07<sup>th</sup> au 20<sup>th</sup>, 2018 (13 nights)



From € 4 160

## HIGHLIGHTS

- UNESCO sites: Torres del Paine National Park; Valparaíso; The Churches of Castro; The Cape Horn Biosphere Reserve; Tortel.
- Rounding the mythical Cape Horn and sailing to the heart of the Chilean canals.
- Outings and landings in Zodiac® dinghies.
- Wildlife: condors, humpback whales, fur seals, dolphins, sea lions, alpacas, Magellanic penguins and cormorants.
- Natural environments: the snow-capped peaks of the Andes towering above fjords, iridescent glaciers, and mountain lakes with crystal-clear water.
- A team of specialized naturalist-guides.





UNESCO

## PUERTO NATALES: TORRES DEL PAINE NATIONAL PARK

After an exceptional moment sailing in the Patagonian canals, discover Puerto Natales, a small fishing port with colourful wooden houses, nestled deep inside the Ultima Esperanza fjord. Here one encounters remarkable rocky peaks, whilst the many glaciers and fjords delicately encircle the town. During your visit here, set out to discover the Torres del Paine National Park. Declared a Biosphere Reserve by UNESCO, this astonishing sanctuary of greenery will reveal its grandiose landscapes to you. Maybe you will encounter its exceptional wildlife, make up of more than 25 species of mammals including the famous huemul, the emblem of the country, or the elegant condor, when it spreads its wings to offer you the most beautiful of sights.



UNESCO

## CHILOE ISLAND - CASTRO

At the heart of the Lake District, your ship will slip through the calm waters of an archipelago of 40 islands, scattered off the coast of Chile. Chiloe is a lush green island with remarkable architecture and a proliferation of wildlife. Indeed, before reaching Castro, it is highly likely that you will have witnessed a truly authentic aquatic ballet, where seals and porpoises swim nose-to-nose with our ship. The island boasts some 70 churches and the capital, Castro, is home to 16 that are listed as UNESCO World Heritage sites, remarkable for their architecture, which is inspired by naval construction techniques. You can also admire the Palafitos, brightly-coloured wooden houses in stilts which seem to float on the water at high tide.



## VALPARAISO • USHUAIA USHUAIA • VALPARAISO

From Valparaíso: Le Soléal - From Nov. 01<sup>st</sup> to 14<sup>th</sup>, 2017

From Ushuaia: Le Boréal - From March 07<sup>th</sup> to 20<sup>th</sup>, 2018

14 days / 13 nights



### DAY ITINERARY

- D 1 **Valparaíso (Chile)**  
Embarkation from 15.00 to 16.00
- D 2 *At sea*
- D 3 **Castro - Chiloe (Chile)**
- D 4 **Puerto Montt (Chile)**
- D 5 *At sea*
- D 6 **Tortel (Chile)**
- D 7 to 9 *Cruising in the heart of the Chilean Fjords*
- D 10 **Puerto Natales (Chile)**
- D 11 *Cruising in the heart of the Chilean Fjords and Magellan Strait*
- D 12 *Cruising along glaciers of the Beagle Channel*
- D 13 *Sailing around Cape Horn and in the Beagle Channel*
- Ushuaia (Argentina)**
- D 14 *Disembarkation. Transfer to the airport.  
Flight Ushuaia/Buenos-Aires International (Pistarini)*

### THIS CRUISE CAN BE MADE IN BOTH DIRECTIONS

For the cruise Ushuaia • Valparaíso aboard *Le Boréal*:

Day 1: Flight Buenos-Aires / Ushuaia (Argentina). Meet and greet and transfer to the port or lunch and time at leisure in the Arakur resort. Optional excursion to Tierra del Fuego National Park before embarkation. Your third day in the Chilean Fjords will be replaced by an half day in Valparaíso.

### YOUR PRE-CRUISE PROGRAMS (from Valparaíso)

- **From Santiago to Valparaíso (2 days/1 night)**  
Price per person: **from € 490.**
- **Atacama desert (4 days/3 nights)**  
Price per person: **from € 2 290.**

### YOUR PRE-CRUISE PROGRAMS (from Ushuaia)

- **Stay in Buenos Aires (1 day/1 night)**  
Price per person: **from € 480.**
- **Iguazu falls (4 days/4 nights)**  
Price per person: **from € 1 950.**

### YOUR POST-CRUISE PROGRAM (from Ushuaia)

- **Iguazu falls (4 days/4 nights)**  
Price per person: **from € 1 950.**

For more information about your pre / post programs and prices, please consult [www.ponant.com](http://www.ponant.com) or your travel agent.

# CORDILLERA & ANDEAN SECRETS

*Aboard Le Boréal, set sail for a cruise along the Chilean and Peruvian coasts, at the foot of the Andes cordillera, where the eternal snow blends in with the clouds. Discover the mysterious pre-Colombian civilizations and stroll through the colonial towns with their yesteryear charm. Picturesque and authentic, surrounded by spectacular nature, let yourself fall under the spell of the Andean treasures!*



## VALPARAISO • GUAYAQUIL

Aboard Le Boréal

From March 20<sup>th</sup> to April 01<sup>st</sup>, 2018 (12 nights)

From € 3 040

### HIGHLIGHTS

- Many UNESCO World Heritage Sites: Valparaiso, the saltpeter mining towns of Iquique, the historic centre of Lima, Cuzco, the site of Machu Picchu, the archeological zone of Chan Chan.
- Discover the major pre-Colombian sites and the mysterious geoglyphs.
- Exceptional architectural heritage, testimony to the colonial era.
- The possibility to discover the Galápagos Islands after your cruise.
- Specialist lecturers aboard to share their passion for their subject and their knowledge with you.

UNESCO

### VALPARAISO

To the West of Santiago, *Le Boréal* will open the gateway to Valparaiso. Sailors, writers and travelers have all extolled the beauty of its bay, surrounded by an amphitheatre of sheer hills. This “Valley of Paradise”, listed as a UNESCO World Heritage Site, preserves a nostalgic memory of its glory days, when one had to go through the port to sail between two oceans. Immortalized in the works of Pablo Neruda, Valparaiso is today one of the most charismatic and historic ports of South America. Don't miss the chance to take one of the cable-cars that climb the 44 hills of the city, overlooking the magnificent rainbow of colours created by the traditional dwellings.



UNESCO

### SALAVERRY - TRUJILLO & CHAN CHAN

When your ship calls at Salaverry, this is the occasion to discover Trujillo, an elegant colonial town with brightly coloured façades, decorated with ornate wooden balconies. With its yesteryear charm, this city is also a cultural symbol of Peru, as it is home to the vestiges of the Chimú and Mochica civilizations. Chan Chan, the former capital of the Chimú kingdom is the largest adobe citadel in pre-Colombian America, declared a World Heritage Site by UNESCO. Admire the Moche pyramids, the Huaca del Sol and the Huaca de la Luna, decorated with colourful mythological frescoes.





UNESCO

## IQUIQUE

This dynamic seaside town boasts an exceptional historic centre, a relic of the golden age of saltpeter mining, thanks to which this region once prospered. Come and admire Plaza Arturo Prat, the municipal theatre with its neo-classical style, entirely built out of pine wood, the Astoreca Palace and the streets lined with Georgian houses with columns and covered terraces. Not far from Iquique, you can visit Humberstone, a disused mining town deep inside the pampa, home to saltpeter works that are UNESCO World Heritage Sites. You can also admire the innumerable geoglyphs of the region, these mysterious drawings carved into the ground by a vanished civilization, including the Atacama giant, an imposing human figure some 80 meters tall.



UNESCO

## GUAYAQUIL – THE GALÁPAGOS

Known as the *Pearl of the Pacific*, Guayaquil is the starting point for discovering the Galápagos Islands. At the crossroads of three ocean currents, these 19 volcanic islands and the marine reserve surrounding them form a living museum and laboratory of evolution; they inspired Charles Darwin to elaborate his Theory of Evolution and have been UNESCO World Heritage sites. The extreme geographical isolation of the islands has produced unusual animal and plant life – marine iguanas, flightless cormorants, giant tortoises, enormous cacti, endemic trees and many species of birds. You will enjoy a truly unusual experience, a sublime site of teeming wildlife, a dreamlike and astonishing environment.



## VALPARAISO • GUAYAQUIL

Le Boréal - From March 20<sup>th</sup> to April 01<sup>st</sup>, 2018

13 days / 12 nights



### DAY ITINERARY

- |      |   |
|------|---|
| D 1  | <b>Valparaíso (Chile)</b><br><i>Embarkation from 16.00 to 17.00</i> |
| D 2  | <b>Coquimbo (Chile)</b>   |
| D 3  | <i>At sea</i>   |
| D 4  | <b>Iquique (Chile)</b>  |
| D 5  | <b>Arica (Chile)</b>  |
| D 6  | <b>Matarani (Peru)</b>  |
| D 7  | <i>At sea</i>   |
| D 8  | ♥ <b>Pisco (Peru)</b>   |
| D 9  | ♥ <b>Callao (Peru)</b>  |
| D 10 | <b>Callao (Peru)</b>  |
| D 11 | <b>Salaverry (Peru)</b>   |
| D 12 | <i>At sea</i>   |
| D 13 | <b>Guayaquil (Ecuador)</b><br><i>Disembarkation.</i>                |

♥ **OVERLANDS:** Nazca Lines from Pisco and Machu Picchu from Callao. See pages 24 & 25.

### COMPLIMENTARY EXCURSIONS

(see details page 26)

### YOUR PRE-CRUISE PROGRAMS

(from Valparaíso)

- **From Santiago to Valparaíso** (1 day/1night)  
Price per person: from € 490.
- **Atacama desert** (4 days/3 nights)  
Price per person: from € 2 290.

### YOUR POST-CRUISE PROGRAMS

(from Guayaquil)

- **From Quito to Cuenca along the Andes** (4 days/3nights)  
Price per person: from € 1 690.
- **The Galápagos, Nature's paradise** (5 days/4 nights)  
Price per person: from € 4 290.

For more information about your pre / post programs and prices, please consult [www.ponant.com](http://www.ponant.com) or your travel agent.

# TREASURES OF CENTRAL AMERICA

*From Ecuador to Panama, this cruise aboard Le Boréal invites you to discover the treasures of Central America, namely Costa Rica, Guatemala and Nicaragua. Between exceptional colonial heritage, pre-Colombian ruins and pristine natural delights, this is the promise of an unusual and fascinating journey to surprising countries and enchanting ports of call.*



## GUAYAQUIL • COLON

Aboard Le Boréal

From April 01<sup>st</sup> to 14<sup>th</sup>, 2018 (13 nights)

From € 3 620

### HIGHLIGHTS

- Visiting the pyramids of Tikal, a major feature of Mayan civilization and a UNESCO World Heritage Site.
- Discovering the national parks of Costa Rica, pristine natural sanctuaries that cover almost a quarter of the country.
- Rich and varied tropical plants and wildlife.
- Exceptional architectural heritage, testimony to the colonial era, alternating Baroque and Andalusian-Moorish styles.
- Specialist lecturers aboard, to share their passion for their subject and their knowledge with you.

## HERRADURA

Herradura takes its name in Spanish from the horseshoe form of its bay, covered in lush tropical vegetation, its beauty enhanced by the hills that loom over it. This small town, the centre of recreational fishing in Costa Rica, is surrounded by national parks that are remarkable for the rich variety of fauna and flora they protect. When *Le Boréal* calls here, it will be the moment to take a journey in small covered boats along the Tarcoles River, whose banks are home to crocodiles and iguanas. This mangrove also hosts the loyal and flamboyant Scarlet Macaw, with its red, blue and yellow plumage, known for mating with the same partner for life.



UNESCO

## PUERTO QUETZAL: PYRAMIDS OF TIKAL

*Le Boréal* will lead you to the port of Puerto Quetzal, gateway to one of the major sites of Mayan civilization: the Pyramids of Tikal. The imposing vestiges of a vanished culture make a real impression on the traveler. In this very dense jungle, the forest seems to emerge from the mist. Its ceremonial centre includes superb examples of temples, palaces, steles and sacrificial alters; you will visit the most remarkable buildings such as the Temple of the Great Jaguar, the Temple of the Masks and the Great Plaza. A magical moment combining culture and nature, the Tikal site will allow you to relive some original legends.



## SAN JUAN DEL SUR - GRANADA

San Juan del Sur will be the starting point for your trip to the "The Great Sultan". This nickname for sumptuous Granada comes from its buildings in the Andalusian-Moorish tradition with their splendid interior courtyards and brightly painted walls. Lying in the shadow of the Mombacho volcano, the city was founded in 1524 and has a rich colonial past that has survived through the years to offer you an picturesque architectural heritage today. Charming colonial constructions alternate with churches in the Baroque or Neo-Classical style. Before you return to the comfort of your ship, do not miss the Main Square, the Cathedral with its imposing white pillars, la *Casa de los Tres Mundos* and the many colonial houses in the town.



## COSTA RICA

Recently classified as "the happiest place to live in the world", Costa Rica is a small country at the heart of Central America. To the hospitality and the spontaneous kindness of its inhabitants, the Ticos, can be added the natural splendor of its lush vegetation. This pacifist nation, which has decided not to have an army and instead invest in development, boasting two ocean coastlines, is a true paradise. The mist-shrouded forest and the immense aquarium of the underwater world are home to extraordinary biodiversity, teeming with abundant, protected wildlife: tapirs, jaguars, macaws, sea turtles and nearly 8,000 species of butterfly. The stopovers in Costa Rica will allow you to fully appreciate all the charms of this exceptional country.



## GUAYAQUIL • COLON

Le Boréal - From April 01<sup>st</sup> to 14<sup>th</sup>, 2018

14 days / 13 nights



### DAY ITINERARY

- |      |   |
|------|---|
| D 1  | <b>Guayaquil (Ecuador)</b><br>Embarkation from 16.00 to 17.00 |
| D 2  | At sea  |
| D 3  | At sea  |
| D 4  | Quepos (Costa Rica)   |
| D 5  | At sea  |
| D 6  | ♥ Puerto Quetzal (Guatemala)                                  |
| D 7  | At sea  |
| D 8  | San Juan del Sur (Nicaragua)                                  |
| D 9  | Herradura (Costa Rica)  |
| D 10 | Golfito (Costa Rica)  |
| D 11 | Coiba (Panama)  |
| D 12 | Fuerte Amador (Panama)  |
| D 13 | Crossing the Panama Canal<br>Colon (Panama)                   |
| D 14 | <b>Colon (Panama)</b><br>Disembarkation.                      |

♥ **OVERLAND:** Pyramids of Tikal from Puerto Quetzal. See page 25.

### COMPLIMENTARY EXCURSIONS

(see details page 26)

## YOUR PRE-CRUISE PROGRAMS

(from Guayaquil)

- **Discovering Guayaquil** (1 day/1 night)  
Price per person: from € 230.
- **From Quito to Cuenca along the Andes** (4 days/3nights)  
Price per person: from € 1 900.
- **The Galápagos, Nature's paradise** (5 days/4 nights)  
Price per person: from € 3 550.

## YOUR POST-CRUISE PROGRAM

(from Colon)

- **Colonial Panama and Miraflores locks** (1 day)  
Price per person: from € 160.

For more information about your pre / post programs and prices, please consult [www.ponant.com](http://www.ponant.com) or your travel agent.



# BETWEEN PANAMA & MARTINIQUE

*Aboard Le Boréal, come and discover emblematic ports of call, from the famous Panama Canal to languorous Martinique, via the heritage of Colombia and the marvels of Saint Lucia. Don't miss this cruise to the heart of the most beautiful landscapes in the Caribbean.*



## COLON • FORT-DE-FRANCE

Aboard Le Boréal

From April 14<sup>th</sup> to 21<sup>st</sup>, 2018 (7 nights)

From € 1 950

### HIGHLIGHTS

- UNESCO sites: Cartagena de Indias, an old colonial city; Willemstad, capital of the island of Curaçao.
- Diving and snorkeling in the crystal-clear waters of the Pacific Ocean.
- Zodiac® excursions and discovering the stunning San Blas Islands.
- Stopping to enjoy the beach and swim in the turquoise waters of Blanquilla Island.
- Extraordinary encounters with the *Kuna Indians*, a warrior tribe of the San Blas archipelago.
- Lecturer chosen for his/her area of expertise.

UNESCO

### CARTAGENA

Founded in 1522 at the time of the conquistadors, Cartagena has preserved the traces of its rich colonial past. Its imposing ramparts are further proof of the tumultuous history of this city. As the site for storing the gold looted from the Aztec and Inca empires before it was taken to Spain, the city was also frequently the target of pirates and privateers. Declared a UNESCO World Heritage site, the romanticism of this city with its narrow streets and colourful façades will not fail to charm you. Set sail in the footsteps of the Spanish sailors who conquered Central America and relive this page of history during your stopover here.



UNESCO

### WILLEMSTAD - CURAÇAO

Off the coast of Venezuela, *Le Boréal* will call at an island with an evocative name: beautiful Curacao... The Dutch West Indies gradually reveal themselves as we cruise closer and the expanses of white sandy beaches at the foot of Mount Christoffel face the ship. Nearby, Porto Mari and its double coral reef offer you the unique opportunity to come and admire the incredible richness of its underwater world. The capital of the island, Willemstad, a UNESCO World Heritage site, has succeeded in preserving the charm of the colonial period and will reveal its colourful houses with their atypical architecture.



## HOLANDES CAYES - THE SAN BLAS ISLANDS

Too small to be mapped, the 365 islands of the San Blas archipelago scatter their minuscule silhouettes like confetti on the surface of an azure sea. Lagoons, virgin forest, palm trees inclining in the wind, remote islets...we invite you aboard *Le Boréal* to discover these heavenly islands, one of the treasures of Panama's Caribbean coast. Here "Comarca Kuna Yala" means "land of the Kuna", the smiling and proud Indian tribe whose bamboo huts are grouped near the beaches. Set out to discover this idyllic region which is home to a people that still live as hunter-gatherers, where the women weave magnificent multicolour fabrics with geometric patterns: the Molas.



## VENEZUELA - BLANQUILLA ISLAND

A trip to Venezuela is a truly original interlude, surrounded by untamed nature where adventure is the watchword... The longest Caribbean coastline in South America awaits you in the North of the country, where endless pristine, sun-kissed beaches make the traveler feel that they have arrived in paradise. A nature reserve with exceptional coral reefs, the elegant island of Blanquilla is an ideal destination for divers or those who simply love to swim in crystal waters surrounded by multicoloured fish. A fan-shaped paradise surrounded by an emerald sea, do not miss this stopover of matchless charm.



## COLON • FORT-DE-FRANCE

Le Boréal - From April 14<sup>th</sup> to 21<sup>st</sup>, 2018

8 days / 7 nights



### DAY ITINERARY

- |     |   |
|-----|---|
| D 1 | <b>Colon (Panama)</b><br><i>Embarkation from 16.00 to 17.00</i>                     |
| D 2 | Holandes Cayes (Panama)   |
| D 3 | Cartagena (Colombia)  |
| D 4 | At sea  |
| D 5 | Willemstad (Curacao)  |
| D 6 | Blanquilla Island (Venezuela)   |
| D 7 | Marigot Bay (Saint Lucia)<br>Soufriere (Saint Lucia)<br>Fort-de-France (Martinique) |
| D 8 | <b>Fort-de-France (Martinique)</b><br><i>Disembarkation.</i>                        |

### COMPLIMENTARY EXCURSIONS

(see details page 26)

### YOUR PRE-CRUISE PROGRAM

(from Colon)

- Colonial Panama and Miraflores locks (2 days/1 night)  
Price per person: from € 290.

### YOUR POST-CRUISE PROGRAM

(from Fort-de-France)

- Flavours of Martinique (1 day)  
Price per person: from € 130.

For more information about your pre / post programs and prices, please consult [www.ponant.com](http://www.ponant.com) or your travel agent.

Reservation and payment must be made when booking your cruise or at least 60 days prior to departure date.

Full tour program is available on our website [www.ponant.com](http://www.ponant.com) or with your travel agent. Prices can be changed or modified. A minimum of participants is required to confirm. The final program will be sent with your travel documents.

## CALLAO - PERU

### Cuzco and Machu Picchu, Sacred Sites of the Incas

*(3 days / 2 nights)*

**From € 2 259** per person

Overland on March 20<sup>th</sup>, 2018: Valparaiso • Guayaquil cruise.

From Callao, enjoy a short panoramic drive of Lima, then fly to Cuzco, former capital of the Inca Empire. The most striking aspect of Cuzco is the architecture and the vast stone walls, so perfectly constructed without mortar and testimony to the artistic and technical genius of these people. Your visit of Cuzco will end at the ruins of Sacsayhuamán, a fortress standing at the top of a hill, overlooking the city of Cuzco.

After a night at the hotel, you will ride the First Class Vistadome Train, with large panoramic windows, and enjoy sumptuous scenery on the Sacred Valley of the Incas up to the site of Machu Picchu.

Listed as a UNESCO World Heritage site, Machu Picchu is the crowning jewel of Inca architecture, a sacred site representing the ultimate expression of how man can live in harmony with his environment. Since its discovery in 1911, this city of granite extending across several terraces has remained swathed in mystery.

After your day of visit and a night in Cuzco, you will re-embark the next day at Salaverry.





## GUAYAQUIL - ECUADOR

### Quito by plane

(14 hours)

**From € 575** per person

From Guayaquil, you will have the opportunity to discover Quito and its best-preserved, least altered historic centre in Latin America, listed in UNESCO's World Heritage Sites. You will discover the cultural heritage of Quito, with the Presidential Palace, the famous "Compañía" dubbed as the most beautiful church in Latin America, or the beautiful Plaza San Francisco and its convent. After lunch, drive to El Panecillo, the landmark hill rising at the Southern edge of the historic centre, before you transfer to the airport for your flight to Guayaquil.



## PISCO - PERU

### Flight over the Nazca Lines

(3 hours 45 min)

**From € 545** per person

Drawing gigantic geometric shapes, the enigmatic Nazca Lines cover 450 km<sup>2</sup> of archaeological mysteries. Monkey, spider, lizard, whale and other plant figures are cut and interlaced in the earth, and only observable from the air. You will board small planes at Nazca airport for an unforgettable 30-minute flight over these mysterious lines, and try to grasp their greatness. Thus, you may be able to answer the question: how and why were these lines drawn so many centuries ago?



## PUERTO QUETZAL - GUATEMALA

### Tikal by plane

(10 hours)

**From € 675** per person

From Puerto Quetzal, fly to Tikal, one of the greatest Maya cities known and studied to date, declared "World Heritage" by UNESCO in 1970. Disembark at the entrance of the Park and begin a stroll along dirt roads and pathways leading back in time. A mysterious realm unfolds upon entering the forested surroundings that now involve the ruins. You will visit the most impressive structures, including the Pyramid of the Great Jaguar, and your guide will explain the theories of life in the time of the Maya. After lunch, it will be time to go back to the airport for your flight back.



## GUAYAQUIL - ECUADOR

### Cuenca by plane

(11 hours)

**From € 525** per person

From Guayaquil, discover Santa Ana de los Cuatro Rios de Cuenca. The centre of the city is listed as a UNESCO World Heritage Trust site because of its many historical buildings, like the renowned Las Conceptas museum, and the neo-Gothic "New Cathedral" and its distinctive blue domes which dominate the skyline. Then visit the famous Ortega Panama Hat Factory and its museum. After lunch discover Cuenca's famous flower market and its dazzlingly colourful displays of arum lilies, orchids, and roses. Then you will fly back to Guayaquil.



# SHORE EXCURSIONS HIGHLIGHTS

Please find below samples of the optional shore excursions, exclusively sold on board (excluding pre-bookable tours). Pricing, tour titles and duration are subject to change. Full tour program is available on our website [www.ponant.com](http://www.ponant.com) 12 months prior to your cruise. Final program will be sent with your cruise documents.

PORT	COUNTRY	YOUR SHORE EXCURSIONS	DURATION	PRICE
ARICA	CHILE	CITY TOUR AND GEOGLYPHS	4H30	FREE
CALLAO	PERU	COLONIAL LIMA	4H30	FREE
CARTAGENA	COLOMBIA	CARTAGENA OF THE INDIES	4H30	FREE
CASTRO	CHILE	CASTRO AND ITS CHURCHES	3H30	€ 89
COQUIMBO	CHILE	ELQUI VALLEY	5H15	FREE
FUERTE AMADOR	PANAMA	<b>FRANK GEHRY MUSEUM &amp; MIRAFLORES LOCKS</b> From Fuerte Amador, you will head to the Miraflores Locks, where you can admire the many vessels sailing through the Panama Canal and visit the famous Miraflores Visitor Centre. Later visit the Frank Gehry-designed biodiversity museum, retracing the history of the origins of the Panama isthmus.	3H45	FREE
FUERTE AMADOR	PANAMA	<b>AUTHENTIC EMBERA INDIAN VILLAGE</b>	5H00	€ 89
GOLFITO	COSTA RICA	<b>BOTANICAL GARDEN &amp; BEACH ESCAPE</b>	2H30	FREE
GUAYAQUIL	ECUADOR	<b>CITY TOUR &amp; PANAMA HAT</b>	5H45	FREE
HERRADURA	COSTA RICA	<b>CARARA NATIONAL PARK</b>	3H15	FREE
IQUIQUE	CHILE	<b>SANTA LAURA &amp; HUMBERSTONE</b> Visit the city of Iquique, and discover the former saltpeter mining towns of Santa Laura and Humberstone, also known as "ghost towns," deep in the heart of the Atacama Desert.	4H30	FREE
MARIGOT	ST. LUCIA	<b>MARIGOT BAY ESCAPE</b>	3H00	FREE
MARIGOT	ST. LUCIA	<b>SOUFRIERE BY SEA ADVENTURE</b>	7H00	€ 99
MATARANI	PERU	<b>AREQUIPA &amp; THE SANTA CATALINA CONVENT</b> Discover Arequipa, known as "the white city" and visit its main monuments. Continue to the Santa Catalina Convent, a UNESCO site and one of the jewels of Peru, a blend of patios, cloisters, individual homes and monastic buildings.	10H30	FREE
PISCO	PERU	<b>BALLESTAS ISLANDS</b> Aboard a local boat, you will sail to the small Ballestas Islands, a vibrant and colourful animal sanctuary. During this pleasure cruise, keep a lookout for dolphins, whales and sea lions, before getting closer to the mysterious hieroglyphs, similar to the Nazca geoglyphs, sculpted in the cliff face more than 1,000 years ago.	3H00	FREE
PUERTO MONTT	CHILE	<b>PETROHUE RAPIDS &amp; TODOS LOS SANTOS LAKE</b>	8H00	€ 139
PUERTO NATALES	CHILE	<b>TORRES DEL PAINE NATIONAL PARK</b>	10H00	€ 199
PUERTO QUETZAL	GUATEMALA	<b>CASA SANTO DOMINGO &amp; ANTIGUA DE GUATEMALA</b> Discover Antigua on foot, strolling through its many narrow cobbled streets until you reach the Plaza Mayor, a central park of incomparable beauty. You will then head to the Merced Church, and the Casa Santo Domingo church before visiting the famous cultural centre, La Azotea.	09H00	FREE
QUEPOS	COSTA RICA	<b>MANUEL ANTONIO NATIONAL PARK</b> Accompanied by your guide, discover the Manuel Antonio park, one of Costa Rica's jewels, and discover the fragile ecosystem of the tropical rainforest, home to abundant wildlife. Then, head for the beach to swim in the warm waters of the Ocean.	4H00	FREE
SALAVERRY	PERU	<b>TRUJILLO &amp; TEMPLES OF THE SUN &amp; MOON</b>	4H00	€ 55
SAN JUAN DEL SUR	NICARAGUA	<b>MASAYA VOLCANO &amp; COLONIAL GRANADA</b>	8H30	FREE
SOUFRIERE	ST. LUCIA	<b>SOUFRIERE NATURAL ATTRACTIONS</b>	3H30	FREE
VALPARAISO	CHILE	<b>VALPARAISO &amp; VINA DEL MAR</b>	4H15	€ 79
WILLEMSTAD	CURACAO	<b>UNESCO CITY WALK</b>	2H00	€ 49

# FORMALITIES

## FOR ALL CRUISES

The below information is current but subject to change at any time without advance notice from government authorities. Please consult your respective government agencies for visa and health information.

**Passport valid for at least six (6) months beyond the completion of your trip.** Passport must contain at least two completely clear, blank, unused visa pages for each visa required, not including any amendment pages. Visa pages with stains or ink from other pages in the passport are not usable. Guests who deviate from the scheduled embarkation or disembarkation port should research the foreign entry requirements for the port country. Due to government regulations, regrettably, PONANT will have to deny boarding to any guest who fails to obtain the appropriate travel documentation for this trip.

## SPECIFIC FORMALITIES

**LE SOLÉAL: COLON • CALLAO** FROM OCTOBER 14<sup>TH</sup> 2017, PAGE 12

**LE BORÉAL: COLON • FORT-DE-FRANCE** FROM MARCH 14<sup>TH</sup> 2018, PAGE 22

**Panama:** a tourist visa is required for Australian citizens. The visa can be obtained upon arrival at the airport: cost US\$5

**LE SOLÉAL: CALLAO • VALPARAISO** FROM OCTOBER 23<sup>RD</sup> 2017, PAGE 14 <sup>(1)</sup>

**LE SOLÉAL: VALPARAISO • USHUAIA** FROM NOVEMBER 01<sup>ST</sup> 2017, PAGE 16 <sup>(1) (2)</sup>

**LE BORÉAL: USHUAIA • VALPARAISO** FROM MARCH 07<sup>TH</sup> 2018, PAGE 16 <sup>(1) (2)</sup>

**LE BORÉAL: VALPARAISO • GUAYAQUIL** FROM MARCH 20<sup>TH</sup> 2018, PAGE 18 <sup>(1)</sup>

(1) **Chile:** Entry/Exit requirements for Australian and Mexican citizens entering/exiting Chile must have a valid passport and pay a RECIPROCITY TAX that will be issued for a stay of up to 90 days upon payment. Currently, the fee is only charged at the Santiago International Airport. Payment can be made in U.S. currency or by credit card. At time of print, the fees were as follow (subject to change without notice): Australia: US\$117 - Mexico: US\$23

(2) **Argentina:** Entry/Exit requirements for Australian, Canadian and U.S. citizens entering/exiting Argentina must have a valid passport and pay a RECIPROCITY TAX. This tax must be prepaid online and prior to the arrival in Argentina, please follow the instructions detailed on the Argentina Immigration Office website: [www.migraciones.gov.ar](http://www.migraciones.gov.ar)

At time of print, the fees were as follow (subject to change without notice): Australia: US\$100 - Canada: US\$75 - USA: US\$160

## IMPORTANT INFORMATION

**Machu Picchu program:** A medical certificate is compulsory. The city of Cuzco's altitude is around 3 350 meters.

**Chilean Fjords program:** During this cruise, Zodiac® outings and/or landings may be organized to bring you closer to the hidden wonders of these spectacular fjords and glaciers.

**Ecuador program:** A medical certificate is recommended for people with breathing or heart problems. In Ecuador, the city of Quito is at an altitude of around 2 850 meters.

**Galapagos program:** The average temperature in the Galapagos Islands at the time of our visit is around 30° C with scattered showers. Because you may have to wet your feet to go ashore, suitable shoes must be worn. Snorkelling equipment is available for hire on site, however if you have a prescription mask, please do bring your own. Remember to bring your binoculars and a camera (preferably waterproof) to immortalize your swims. During this program you will be required to walk 3 to 4 hours per day on volcanic soil, which can sometimes be slippery. You may bring trekking poles to help you. This program is not suitable for the mobility impaired. We strongly advise seeking your doctor's opinion before joining this program.

**Panama Canal program:** The schedules depend on several factors and despite our best efforts, crossing the Panama Canal during the day is not guaranteed.





# Sailing in the Caribbean with PONANT

Do you dream of endless beaches of fine sand, turquoise water, lagoons teeming with exotic multicoloured fish...or the fiery horizon of the setting sun...idyllic islands and pristine coves in which to drop anchor...then, set sail for a cruise with PONANT!

Aboard our racy three-mast yacht, you will have the privilege of discovering the treasures of the Caribbean from the sea, these islands that rival each other for beauty, each with their own personality, scattered in a rainbow formation on the indigo sea.

The Grenadines, Saint Lucia, Martinique, Guadeloupe – names that conjure images of long white sandy beaches edged with coconut palms and resplendent underwater worlds, but also, on the land, of luxuriant vegetation rich with colourful flowers and delicious tropical fruits. And everywhere you go, the welcoming smile of the local people, full of joy and proud to share their way of life with you, a blend of Biguine and Planter's Punch!

Choose your cruise aboard *Le Ponant* and set sail for superb moments of cruising, peace and relaxation.



## THE "PONANT" SIGNATURE AT THE HEART OF THE CARIBBEAN

- Our cruises aboard *Le Ponant* with a diving theme have a qualified diving instructor on board.
- 2 Golf cruises so that you can play on the greens of exceptional Caribbean courses.
- Discovery of a number of unspoiled archipelagos many of which are listed as UNESCO World Heritage Sites.
- The privilege of sailing under the power of the wind in the Caribbean, aboard a luxurious three-mast yacht.



With her low-profile and dynamic lines, her 88 meters (290 ft) of long, streamlined decks, her three masts soaring toward the sky and her sails billowing in the regular breeze of the Trade Winds... *Le Ponant* was the first of the company's ships. She flies the French flag and offers her passengers a refined, intimate and exclusive cruising experience.

You do not need to be familiar with the rudiments of sailing to board this jewel of the fleet: you will not be taking part in maneuvers, but a friendly and approachable crew is there to explain them all to you. Just like on a private yacht, you will sail with only a limited number of fellow passengers who truly love the sea.

Aboard, the design reworks the yacht spirit in refined marine tones: natural, warm wood and pure creamy whites associated with an azure blue and a bluish grey.



## Exceptional peace and quiet

With just 32 cabins, you are sure to experience the luxury of tranquility and be able to truly relax.

On the upper Antigua deck there are 5 cabins, each with a large port hole, and on the Marie Galante deck, we have created 19 standard cabins as well as 8 new Premium cabins; these are more spacious and offer our passengers exceptional comfort.



## Refined cuisine, discreet service

On board, you will experience the “French touch”, a subtle blend of relaxed elegance and conviviality. In the Karukera restaurant, you will be able to sample refined cuisine, inspired by the flavours of the sea, prepared by our chef in the finest French gastronomic traditions and served at sunset on the outdoor terrace to delight both the eyes and the palate.

Our attentive and discreet crew is determined to make your cruise an exceptional experience. Personalized service, the illustration of a way of living that is both elegant and relaxed.



## Absolute relaxation aboard an exceptional yacht

From the huge and aptly named sundeck and her observatory, enjoy the unique scenery as it unfolds before you. At the rear of the ship, the marina platform sits just above the water, inviting passengers to swim, enjoy some water sports, or go diving or snorkeling with an experienced instructor.

Lastly, this magnificent yacht's shallow draught, which is perfectly suited to island hopping, will allow you to get as close as possible to the beaches for exceptional moorings.

*Le Ponant offers you  
a unique cruising experience,  
a blend of nautical tradition  
and great elegance.*



# LONGING FOR THE CARIBBEAN

## See in the New Year in the tropics

From the sandy beaches with crystal-clear turquoise waters to the primary forests and the dormant volcanoes, the Caribbean islands offer their visitors a rich palette of colours and idyllic landscapes. For the Christmas and New Year celebrations, set sail aboard *Le Ponant* to enjoy the Caribbean sunshine, far from the dreary weather at home. There'll be no Christmas tree here, and lobster and rum will replace the traditional roast turkey! With your family or friends, treat yourself to the privilege of a holiday season in the tropics.

Departures: December 18<sup>th</sup> and 27<sup>th</sup>, 2017



## Go diving

The Caribbean is renowned for its rich underwater world, truly a paradise for divers. Here the year-round warm waters are home to abundant and colourful marine life. This silent universe will reveal its marvels to you: tropical fish, as well as turtles and manta rays, gliding elegantly amidst gardens of anemones and coral. Accompanied by our experience diving monitor, you will explore this strange kingdom of multicoloured jewels, whether scuba diving or snorkeling.

Departures: December 18<sup>th</sup> and 27<sup>th</sup>, 2017



## Play on exceptional golf courses

Come and discover the peerless beauty of the West Indies and practice your favorite sport in a different way, by choosing one of the PONANT golf cruises. From port to port, don't miss the opportunity to try out your swing on a selection of exceptional courses. You will appreciate the unique natural environment of these tropical islands and make the most of the colourful towns and the immaculate beaches. Come and live your passion in a privileged and refined setting, during one of these exceptional cruises aboard *Le Ponant*.

Departures: December 04<sup>th</sup> and 11<sup>th</sup>, 2017



## Experience Creole culture

The Caribbean islands are captivating with the beauty of their landscapes but also with their rich traditions. Here, the influences are manifold: Indian rites, African memories and European customs live side-by-side and produce a subtle blend of contentment and a gentle lifestyle. At the colourful markets, the air is filled with the scent of fruit and spices, and the ancient fortresses and historic sites are testimony to the often tumultuous past of these islands, while the notes of calypso and biguine set the pace of life for the inhabitants.

Departures: December 04<sup>th</sup>, 11<sup>th</sup>, 18<sup>th</sup> and 27<sup>th</sup>, 2017





## YOUR CRUISES IN THE CARIBBEAN

DATE	SHIP	ITINERARY	NIGHTS	PAGE
December 04 <sup>th</sup> , 2017	<i>Le Ponant</i>	Fort-de-France • Pointe-à-Pitre	7 	TEE-TIME IN THE WEST INDIES ..... p34
December 11 <sup>th</sup> , 2017	<i>Le Ponant</i>	Pointe-à-Pitre • Pointe-à-Pitre	6 	GOLF IN THE CARIBBEAN ..... p36
December 18 <sup>th</sup> , 2017	<i>Le Ponant</i>	Pointe-à-Pitre • Fort-de-France	9	CHRISTMAS IN THE GRENADINES ..... p38
December 27 <sup>th</sup> , 2017	<i>Le Ponant</i>	Fort-de-France • Fort-de-France	7	NEW YEAR IN THE CARIBBEAN ..... p40



# TEE-TIME IN THE WEST INDIES

*Departing from Fort-de-France, set sail for the treasures of the Caribbean: Discover the West Indies, a series of miniature paradises like those upon which Robinson Crusoe was stranded. Follow this brand-new itinerary and live your love of golf to the full, with our selection of courses that will reveal some of the most beautiful scenery in the islands, a blend of lush greenery and turquoise waters.*



## THE GRENADINES ESTATE GOLF CLUB

• 18 Holes – Par 72

An exhilarating and challenging Jim Fazio designed 18-hole championship golf course, set on dramatic sloping hills and along the ocean edge, every hole overlooking the Caribbean Sea. Awarded “Best Golf Course” by Robb Report, this is a most distinctive course of unique character and playability.

## ST ANDREWS GOLF CLUB

• 18 Holes – Par 72

Often considered to be the most beautiful course in the Caribbean, the Saint Andrews Golf Club nestles in the heart of the hills to the North of Port of Spain, Trinidad’s capital. With its narrow, green and streamlined fairways and its soaring tropical trees, discover this exceptional course and play against a backdrop of beaches and turquoise water.

## MAGDALENA GRAND BEACH & GOLF CLUB

• 18 Holes – Par 72

Designed by Bob Hunt and Marcus Blackburn, woven into the landscape of an old coconut plantation, this beautiful course enjoys panoramic views of the capital of Tobago, and the Atlantic Ocean. The landscape varies greatly with lakes, woodland thickets, beaches, mangroves and wild grass.

## ROYAL WEST MORELAND GOLF CLUB

• 18 Holes – Par 72

Robert Trent Jones Jr. built this challenging and superbly maintained course on a former sugar plantation, offering golfers unmatched views of the Caribbean Sea. Surrounded with thriving greenery and flourishing tropical landscape, you will experience the tricky back nine.



IN PARTNERSHIP WITH

**LE FIGARO**  
CROISIÈRES

**FORT-DE-FRANCE • POINTE-À-PITRE**

Aboard Le Ponant

From December 04<sup>th</sup> to 11<sup>th</sup>, 2017 (7 nights)



From € 3 140

## The "GOLF PACKAGE"

Reservation and prepayment must be made at least 45 days prior to your departure date.

- 4 green fees with shared carts, electric or manual trolley (when possible),
- Return transfers to golf courses,
- Handling of clubs and bags at each call,
- Organization and supervision by a Sports Coach present on board during the whole cruise,
- Golf handicap is mandatory. Gentlemen Handicap Index 28; Ladies Handicap Index 35. In order to better organize the golf days, we ask you to register. Golfers must have their handicap book validated less than 1 year.

*Each golfer should bring their own equipment as rental at the golf courses may not be available and is very restrictive.*

## SAINT LUCIA – SOUFRIERE

Located a few miles from Martinique, Saint Lucia is a green and volcanic island, where an abundance of wildlife has found refuge. A small English-speaking island shaped like a mango, one of the poetically-named “Windward Islands”, it offers visitors luxuriant nature and long fine-sand beaches, not to mention its two rocky peaks listed as UNESCO World Heritage Sites. These huge volcanic cones shaped like sugarloaves loom over the island’s west coast. When you call at the island, do not miss the chance to discover Soufriere, its impressive and still-active volcano, but also the many typical Creole villages.



## TRINIDAD ET TOBAGO

Small islands in the South of the Caribbean, their names bringing to mind coconut palms and long sandy beaches, Trinidad and Tobago form a tiny republic, a veritable tropical paradise located off the coast of Venezuela. Conquered by Christopher Columbus in 1498, the island was successively ruled by the French, Dutch and British, leaving the islands with a very unique culture. When you call here, you will first discover Trinidad, the larger of the two islands, and its unusual landscapes. Here the aromas of mangos, lemon trees and sea spray perfume the air, while the azure water contrasts with the pinky beaches and the tropical rainforest. Further on, *Le Ponant* will moor in Tobago. Known as Robinson Crusoe’s island, you will be able to admire its remarkable coral reefs, many sheltered coves and its golden sunsets.



## FORT-DE-FRANCE • POINTE-À-PITRE

*Le Ponant* - From December 04<sup>th</sup> to 11<sup>th</sup>, 2017

8 days / 7 nights



### DAY ITINERARY

- |     |   |
|-----|---|
| D 1 | <b>Fort-de-France</b> (Martinique).<br><i>Embarkation from 16.00 to 17.00</i>               |
| D 2 | <b>Canouan Island - THE GRENADINES ESTATE GOLF CLUB</b><br>(Saint Vincent & the Grenadines) |
| D 3 | <b>Tobago Cays</b> (Saint Vincent & the Grenadines)   |
| D 4 | <b>Port of Spain - SAINT ANDREWS GOLF CLUB</b> (Trinidad)                                   |
| D 5 | <b>Scarborough - MAGDALENA GRAND BEACH GOLF CLUB</b><br>(Tobago)                            |
| D 6 | <b>Bridgetown - ROYAL WESTMORELAND GOLF CLUB</b><br>(Barbados)                              |
| D 7 | <b>Pigeon Point</b> (Saint Lucia)   |
| D 8 | <b>Pointe-à-Pitre</b> (Guadeloupe)<br><i>Disembarkation.</i>                                |

# GOLF IN THE CARIBBEAN

*From Guadeloupe, discover the French West Indies and St. Kitts & Nevis. Aboard Le Ponant, the islands reveal their magnificent landscapes, their underwater world and their traditions. From call to call, live your passion for golf on the most beautiful and internationally renowned courses, offering spectacular views of the ocean and its crystal-clear coves.*



## SAINT-BARTHELEMY

Located to the North of the Lesser Antilles, Saint-Barthelemy is a veritable haven of peace covering some 25 km<sup>2</sup>. This small Creole paradise in the French West Indies is unlike any other and surprises visitors with the beauty and variety of its landscapes: long beaches of golden sand, lagoons in an infinite palette of blues, gardens teeming with tropical flowers, savannah shaded by palm trees. When you call here, take the time to explore this island that has succeeded in preserving the undeniable charm of its colourful natural environment. Indeed, by the time you come back aboard *Le Ponant*, you will be affectionately calling it "Saint-Barth".



## ST. KITTS & NEVIS

Mountainous and covered in forest, the two volcanic islands of St. Kitts and Nevis, lying to the North of Guadeloupe, appear like an exclamation mark on the ocean. Here the golden sandy beaches lie alongside countless lagoons and lava formations, whilst coral reefs and luxuriant vegetation are examples of the natural settings that await the traveler. When *Le Ponant* calls here, discover the hidden treasures of these islands, between historical sites, former plantation homes, and gardens of a thousand colours, and set out to meet the local inhabitants who will share their Creole customs and traditions with you.

IN PARTNERSHIP WITH

**LE FIGARO**  
CROISIÈRES

POINTE-À-PITRE • POINTE-À-PITRE

Aboard Le Ponant

From December 11<sup>th</sup> to 17<sup>th</sup>, 2017 (6 nights)



From € 3 140

### The "GOLF PACKAGE"

Reservation and prepayment must be made at least 45 days prior to your departure date.

- 5 green fees with shared carts, electric or manual trolley (when possible),
- Return transfers to golf courses,
- Handling of clubs and bags at each call,
- Organization and supervision by a Sports Coach present on board during the whole cruise,
- Golf handicap is mandatory. Gentlemen Handicap Index 28; Ladies Handicap Index 35. In order to better organize the golf days, we ask you to register. Golfers must have their handicap book validated less than 1 year.

*Each golfer should bring their own equipment as rental at the golf courses may not be available and is very restrictive.*





## NEVIS FOUR SEASONS GOLF CLUB

• 18 Holes - Par 71

Designed by Robert Trent Jones Jr., this is one of the most popular golfing destinations in the Caribbean. Nevis Peak, a dormant volcano, brings many changes in level to the course as well as panoramic views. The rounds offer a number of challenges with aquatic obstacles and more than 70 bunkers scattered throughout the green.

## ROYAL ST. KITTS GOLF CLUB

• 18 Holes - Par 72

The Royal St. Kitts Golf Club lies in a valley bordered by mountains to the West and the ocean to the East, offering a varied and picturesque backdrop to the course. The course offers golfers the unique opportunity of playing on both the Atlantic Ocean and the Caribbean Sea in the same round.

## CUISINART GOLF CLUB

• 18 Holes - Par 71

Designed by Greg Norman, this course offers superb panoramic views over the Caribbean Sea. The opening hole in particular is very spectacular. The uneven terrain provides interesting changes in level and natural aquatic obstacles.

## SAINT-FRANÇOIS INTERNATIONAL GOLF CLUB

• 18 Holes - Par 72

Created in 1978 by the architect Robert Trent Jones Senior and completely renewed in 2010, the only 18-holes course in Guadeloupe nestles in a unique environment. The course nests at the heart of a beautiful seaside resort and extends between coconut trees, sandy bunkers and small ponds.

## POINTE-À-PITRE • POINTE-À-PITRE

Le Ponant - From December 11<sup>th</sup> to 17<sup>th</sup>, 2017

7 days / 6 nights



### DAY ITINERARY

D 1	<b>Pointe-à-Pitre</b> (Guadeloupe). Embarkation from 16.00 to 17.00
D 2	Nevis - FOUR SEASONS GOLF CLUB (St. Kitts & Nevis)
D 3	Basseterre - ROYAL ST. KITTS GOLF CLUB (St. Kitts & Nevis)
D 4	Saint-Barthelemy (French West Indies)
D 5	Road Bay - CUISINART GOLF CLUB (Anguilla)
D 6	Nevis - FOUR SEASONS GOLF CLUB (St. Kitts & Nevis)
D 7	<b>Pointe-à-Pitre</b> - SAINT-FRANÇOIS INTERNATIONAL GOLF CLUB (Guadeloupe) Disembarkation.



# CHRISTMAS IN THE GRENADINES

*The islands create the spirit of the journey... the Caribbean brings it to life with its brilliant colours. Nature is prodigious here, scattering the vermillion of flame trees on the shores of pale-golden beaches. Set sail aboard Le Ponant for an exceptional Christmas, between Guadeloupe and the Grenadines. In the company of your friends or family, discover these pristine islands and their natural beauty.*



## UNION ISLAND - CHATHAM BAY

Deserted bays, long stretches of golden sand, turquoise waters and endless coral reefs – Union Island is without a doubt one of the most beautiful islands in the Caribbean. Overlooked by soaring peaks, this strange little strip of land owes its nickname of “the Tahiti of the West Indies” to its volcanic silhouette and its large swathes of greenery. When you call here, you will discover what the locals consider to be “the best-kept secret in the Grenadines” -Chatham Bay. Surrounded by hills and valleys carpeted in tropical rainforest, sheltering many sea turtles, this delightful half-moon of sand is, each day, the setting for the tireless ballet of the numerous pelicans who inhabit the island.

## CANOUAN ISLAND & MAYREAU

Between the tropics and the Equator, discover Canouan, a tiny island renowned for the spectacular coral reef that lies along its Atlantic coast. Originally named “Hairoun” this small parcel of land, whose shape is reminiscent of a scorpion, was initially inhabited by Carib Indians, while Christopher Columbus was the first European to set foot on it. Later, *Le Ponant* will set sail for Mayreau, where picturesque small villages nestle amid the verdant vegetation. Clad in your snorkeling gear and dive among the underwater coral gardens teeming with life and colour!

CHRISTMAS  
CRUISE

## POINTE-À-PITRE • FORT-DE-FRANCE

Aboard Le Ponant

From December 18<sup>th</sup> to 27<sup>th</sup>, 2017 (9 nights)



From € 3 310

## HIGHLIGHTS

- Spending Christmas Eve in the Caribbean.
- Discovering Saint Lucia and its two rocky peaks, listed as UNESCO World Heritage Sites.
- Lazing around on the long white-sand beaches.
- Discovering the Grenadines Islands, considered to be one of the world's most stunning archipelagos.
- Exceptional underwater worlds where you'll be able to observe sea turtles, barracudas, spiny lobsters, and parrotfish.
- The presence of an experienced diving instructor.



## THE GRENADINES

Jewels of the Caribbean, the sweetly-named Grenadines are more than 600 small islands, like the beads of a necklace in the colours of tropical dreams. This terrestrial paradise is particularly well known for its picture-postcard landscapes, but also for the beauty of its coral reefs, home to a whole rainbow of fish and sea turtles. Aboard *Le Ponant*, let the gentle Trade Winds transport you from island to island, to the palm-fringed shores of the white sandy beaches, from whence the high volcanic peaks of neighboring islands can be glimpsed. Revisit the spirit of the sailors of yore and discover the Grenadines, a still-pristine and unchanged world, against a backdrop of rum and West Indian beats.



## LES SAINTES

Made up of 9 small islets and discovered by Christopher Columbus, Les Saintes awaken the imagination of travelers and offer extraordinary panoramas. Proudly ranked as the third most beautiful bay in the world, Les Saintes Bay, which formerly welcomed pirates and privateers, is now a highly desirable anchorage. During your stopover here, do not miss the chance to discover the richness and diversity of the underwater world in these translucent waters during unforgettable dives, and let your gaze wander to the horizon, guided by the entertaining ballet of the saintoises, the small and colourful local fishing boats.



## POINTE-À-PITRE • FORT-DE-FRANCE

**Le Ponant - From December 18<sup>th</sup> to 27<sup>th</sup>, 2017**  
10 days / 9 nights



DAY	ITINERARY
D 1	<b>Pointe-à-Pitre</b> (Guadeloupe) Embarkation from 16.00 to 17.00
D 2	<b>Les Saintes</b> (Guadeloupe)
D 3	<b>Marigot Bay</b> (Saint Lucia) <b>Soufriere</b> (Saint Lucia)
D 4	<b>Canouan Island</b> (Saint Vincent & the Grenadines)
D 5	<b>Mayreau</b> (Saint Vincent & the Grenadines)
D 6	<b>Saint George's</b> (Grenade)
D 7	<b>Carriacou</b> (Grenade) <b>Chatham Bay, Union</b> (Saint Vincent & the Grenadines)
D 8	<b>Chatham Bay, Union</b> (Saint Vincent & the Grenadines) <b>Tobago Cays</b> (Saint Vincent & the Grenadines)
D 9	<b>Bequia</b> (Saint Vincent & the Grenadines)
D 10	<b>Fort-de-France</b> (Martinique) Disembarkation.

## YOUR PRE-CRUISE PROGRAM

(from Pointe-à-Pitre)

- Transfer to the port of Pointe-à-Pitre  
Price per person: from € 30.

## YOUR POST-CRUISE PROGRAMS

(from Fort-de-France)

- Flavours of Martinique (1 day)  
Price per person: from € 130.
- Relaxing day at Bakoua Hotel 3\* (1 day)  
Price per person: from € 130.

For more information about your pre / post programs and prices, please consult [www.ponant.com](http://www.ponant.com) or your travel agent.



# NEW YEAR IN THE CARIBBEAN

*From Fort-de-France, set sail to discover the Grenadines and see in the New Year with friends or family, surrounded by crystal-clear waters edged with white sandy beaches, the coconut palms dancing to the breeze of the Trade Winds. Aboard Le Ponant, let yourself fall under the spell of these charming landscapes as the turquoise sea stretches into infinity.*



## FRAGRANCES OF MARTINIQUE

How can one speak of Martinique without having in mind the multitude of colourful flowers that brighten up the island, the fragrances of exotic fruits blended with sugar cane or the voluptuous sensation on the tastebuds of the rounded flavours of the most authentic Martinican rums? From Fort-de-France, set out to discover Habitation Clement and its distillery, founded in 1887 and currently classified as a historical monument. After a visit to the main house, its outbuildings, cellars, distillery, the workers' huts and the grounds, your host will invite you to sample what are proudly proclaimed as being "the finest rums in the world".

## SAINT GEORGE'S

All the islands of the West Indies are attractive, but some truly stand out. Grenada, also known as "the Spice Island", is a small, hilly island forged by volcanic activity, with crater lakes and mountain slopes covered with dense tropical rainforest, minuscule villages and numerous plantations. Its elegant capital, Saint George's, lies in a horseshoe-shaped harbor on the West coast. It is a particularly picturesque town has preserved its colonial architecture with its red-tiled roofs and pastel colours. When *Le Ponant* drops anchor here, discover this island off the beaten path, the wild beauty of its tropical rainforest, its immaculate beaches and its many waterfalls.

NEW YEAR  
CRUISE

## FORT-DE-FRANCE • FORT-DE-FRANCE

Aboard Le Ponant

From Dec. 27<sup>th</sup>, 2017 to Jan. 03<sup>rd</sup>, 2018 (7 nights)



From € 3 110

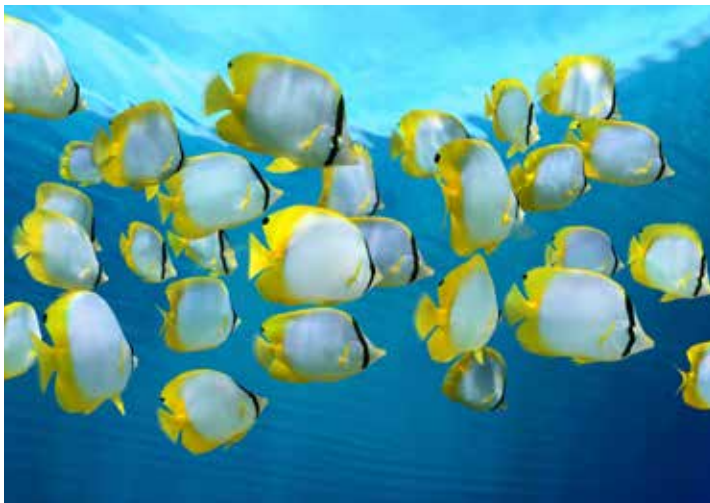
## HIGHLIGHTS

- Spending New Year's Eve in the Caribbean.
- Discovering Saint Lucia and its two rocky peaks, listed as UNESCO World Heritage Sites.
- Lazing around on the long white-sand beaches.
- Discovering the Grenadine Islands, considered one of the world's most stunning archipelagos.
- Exceptional underwater world with the possibility of observing turtles, barracudas, spiny lobsters and parrot fishes.
- The presence of an experienced diving instructor.



## DIVE INTO THE CARIBBEAN SEA

The Grenadines, Saint Lucia, Guadeloupe... scattered across the Caribbean Sea, this myriad of islands is evocative of dreams and adventure, and a paradise for divers from around the world. During your cruise aboard *Le Ponant*, we offer you the chance to enjoy some exploration dives and snorkeling circuits with an experienced and qualified instructor. Whether you are a beginner or an advanced diver, our variety of scuba diving and snorkeling excursions caters to all levels of experience. Come and explore the underwater world of this unique sea, where you will witness unusual encounters: coral reefs, mysterious shipwrecks and tropical fish. From port to port and at your own pace, discover the underwater world of the Caribbean.



## BEQUIA

With its charming beaches of fine sand, its turquoise waters home to brightly coloured coral reefs and its many bays surrounded by deep green hills, Bequia is undoubtedly one of the most beautiful islands in the Caribbean. Lying at the heart of the Grenadines, this secret land, known as the "island of clouds" by the Amerindians, will reveal a history rich in fishing and boat building traditions, as well as many picturesque and lively small villages. When *Le Ponant* calls here, do not miss the chance to explore this miniature green paradise, former base of the famous pirate Blackbeard in the 18<sup>th</sup> Century, and encounter its exceptional wildlife.



## FORT-DE-FRANCE • FORT-DE-FRANCE

Le Ponant - From Dec. 27<sup>th</sup>, 2017 to Jan. 03<sup>rd</sup>, 2018

8 days / 7 nights



### DAY ITINERARY

- |     |   |
|-----|---|
| D 1 | <b>Fort-de-France</b> (Martinique)<br>Embarkation from 16.30 to 17.30                               |
| D 2 | Bequia (Saint Vincent & the Grenadines)   |
| D 3 | Saint George's (Grenade)  |
| D 4 | Sandy Island (Grenadines)<br>Chatham Bay, Union (Saint Vincent & the Grenadines)                    |
| D 5 | Chatham Bay, Union (Saint Vincent & the Grenadines)<br>Tobago Cays (Saint Vincent & the Grenadines) |
| D 6 | Marigot Bay (Saint Lucia)<br>Soufriere (Saint Lucia)  |
| D 7 | Les Saintes (Guadeloupe)  |
| D 8 | <b>Fort-de-France</b> (Martinique)<br>Disembarkation.   |

## YOUR PRE-CRUISE PROGRAM

(from Fort-de-France)

- Transfer to the port of Fort-de-France  
Price per person: from € 30.

## YOUR POST-CRUISE PROGRAMS

(from Fort-de-France)

- Flavours of Martinique (1 day)  
Price per person: from € 130.
- Relaxing day at Bakoua Hotel 3\* (1 day)  
Price per person: from € 130.

For more information about your pre / post programs and prices, please consult [www.ponant.com](http://www.ponant.com) or your travel agent.

# SHORE EXCURSIONS HIGHLIGHTS

Please find below samples of the optional shore excursions, exclusively sold on board. Pricing, tour titles and duration are subject to change. Full tour program is available on our website [www.ponant.com](http://www.ponant.com) 12 months prior to your cruise. Final program will be sent with your cruise documents.

PORT	COUNTRY	YOUR SHORE EXCURSIONS	DURATION	PRICE
BEQUIA	GRENADINES ISLANDS	Time at leisure on the beach		
CARRIACOU	GRENADA	Time at leisure on the beach		
CHATMAY BAY	ST VINCENT & THE GRENADINES	Time at leisure on the beach		
LES SAINTES	GUADELOUPE	Walking tour & Napoléon fortress	4H30	€ 45
MARIGOT	SAINT LUCIA	Marigot Escapade	3H00	€ 35
MAYREAU	ST VINCENT & THE GRENADINES	Time at leisure on the beach		
SOUFRIERE	SAINT LUCIA	Magical soufriere	3H00	€ 39
ST. GEORGES	GRENADA	Spices & Falls	4H00	€ 39
TOBAGO CAYS	GRENADINES ISLANDS	Time at leisure on the beach		

## FORMALITIES

### FOR ALL CRUISES

The below information is current but subject to change at any time without advance notice from government authorities. Please consult your respective government agencies for visa and health information.

**Passport valid for at least six (6) months beyond the completion of your trip.** Passport must contain at least two completely clear, blank, unused visa pages for each visa required, not including any amendment pages. Visa pages with stains or ink from other pages in the passport are not usable. Guests who deviate from the scheduled embarkation or disembarkation port should research the foreign entry requirements for the port country. Due to government regulations, regrettably, PONANT will have to deny boarding to any guest who fails to obtain the appropriate travel documentation for this trip.

### DIVING CRUISES



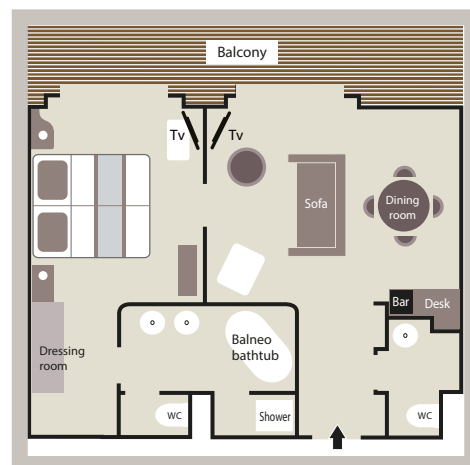
Dives when authorized by local authorities and feasible with ship equipment and Zodiac® dinghies. Rates: € 70 per standard dive; € 80 per dive when local equipment or staff must be used, € 80 for a "discover scuba dive" course. In order to participate to diving sessions, guests must have with them a medical certificate less than 1 year old and their up to date dive book.



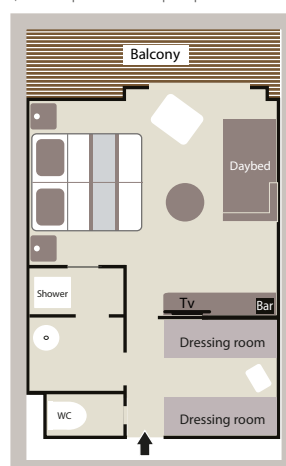


# Staterooms & Decks

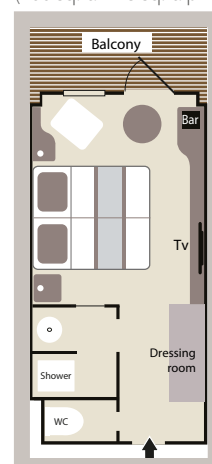
## OWNER'S SUITE (484 sq.ft + 97 sq.ft. private balcony)



## 3 DELUXE SUITES (290 sq.ft. + 54 sq.ft. priv. balcony)

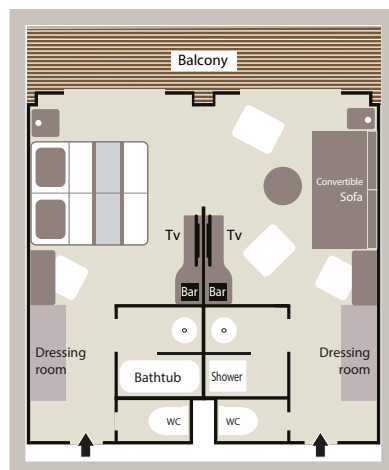


## 28 DELUXE STAT. (200 sq.ft. + 43 sq.ft. priv. balcony)

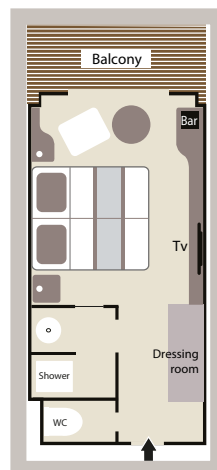


*Deluxe Suites aboard Le Boréal et le Soléal:  
1 shower and 1 bathtub.*

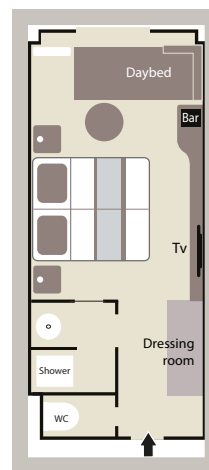
## 20 PRESTIGE SUITES (37 m² + 8 m² balcon privé)



## 92 PRESTIGE STAT. (18,5 m² + 4 m² balcon privé)



## 8 SUPERIOR STAT. (21 m²)

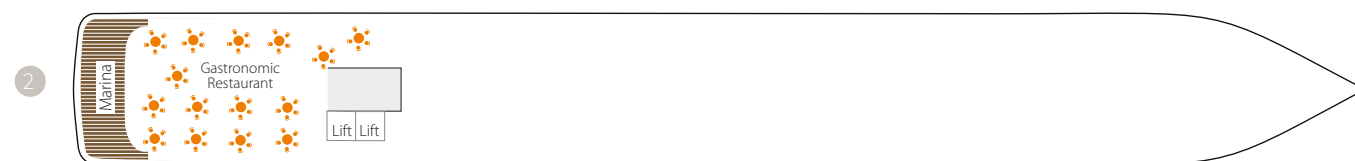


*Prestige Staterooms aboard Le Boréal & Le Soléal, Decks 5 & 6: 1 shower or 1 bathtub depends on cabins.*

Le Boréal  
& Le Soléal



Le Soléal configuration: <sup>(1)</sup> Hammam <sup>(2)</sup> Locker <sup>(3)</sup> Massage



2 Gastronomic Restaurant - Marina

3 28 Deluxe staterooms with private balcony  
8 Superior staterooms (cabins 300 & 301 have a porthole) - Main Lounge - Shop - Reception desk - Excursion desk - Medical centre

4 35 Prestige staterooms with private balcony Theatre

5 37 Prestige staterooms with private balcony (with 22 Prestige staterooms convertible into 11 Prestige suites) - Fitness - Beauty Corner Sothys™: Balneo, Hammam, Massage, Hairdresser - Relaxation room - Image & photo desk - Bridge

6 Owner's Suite - 3 Deluxe Suites with private balcony - 20 Prestige staterooms with private balcony (with 18 Prestige staterooms convertible into 9 Prestige suites) - Pool - Grill Restaurant - Internet space - Library - Panoramic lounge - Panoramic terrace

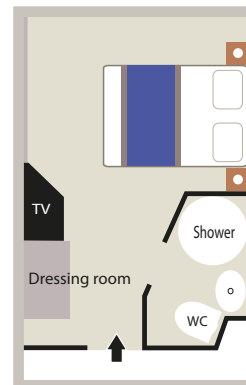
Owner's Suite  
Deck 6  
Prestige Suites  
Decks 6 - 5  
Deluxe Suites  
Deck 6

Prestige Staterooms  
Decks 4 - 5 - 6  
Deluxe Staterooms  
Deck 3  
Superior Staterooms  
Deck 3

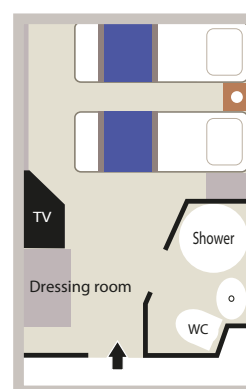


# Staterooms & Decks

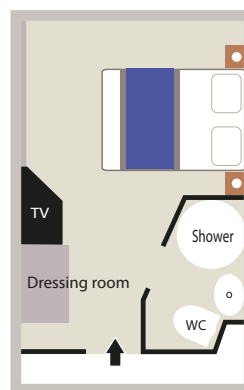
## 5 ANTIGUA STATEROOMS (134 sq.ft. to 165 sq.ft.)



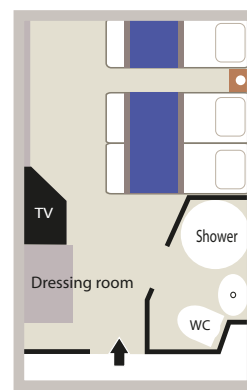
## 19 MARIE-GALANTE STATEROOMS & 8 MARIE-GALANTE PREMIUM STATEROOMS (113 sq.ft. to 145 sq.ft.)



Twin Bed Version



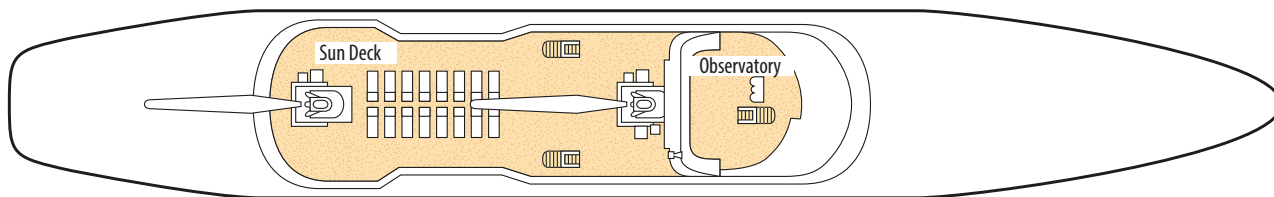
Double Bed version



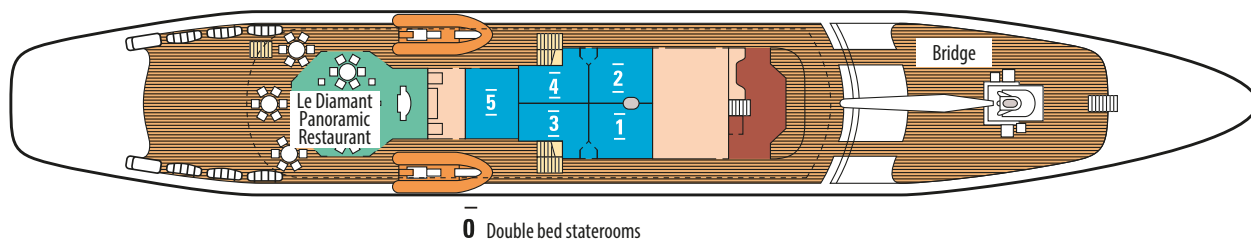
Triple version

Le Ponant

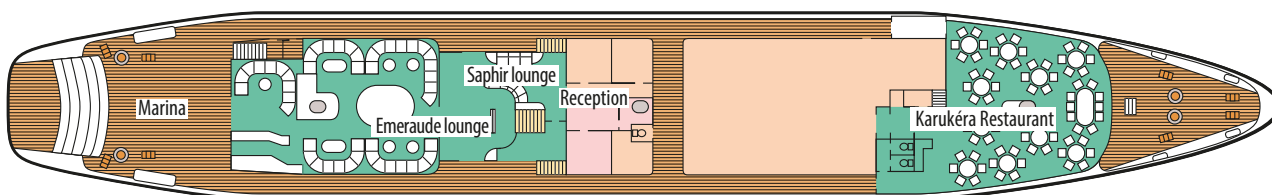
## 5 SUN DECK



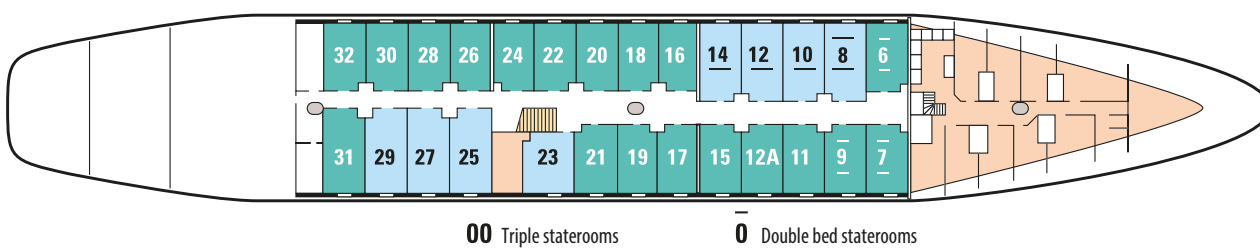
## 4 ANTIGUA DECK



## 3 SAINT-BARTH DECK



## 2 MARIE-GALANTE DECK



2 27 staterooms (with 3 triple staterooms and 4 double bed staterooms)

4 Le Diamant Panoramic Restaurant - Bridge

3 Marina - Emeraude lounge - Lobby - Saphir lounge - Karukéra Gastronomic Restaurant

5 Observatory - Sun Deck

32 cabins, all with a porthole and soothing pastel interiors. No lift on board.

- Antigua staterooms
- Marie Galante staterooms
- Marie Galante Premium staterooms

# Price list\*

## Your cruises in Latin America

### OCTOBER 14<sup>TH</sup>, 2017

9 nights on board

#### COLON • CALLAO LE SOLÉAL

Superior Stateroom	3 590 €	<b>2 510 €</b>
Deluxe Stateroom	3 870 €	<b>2 700 €</b>
Prestige Stateroom - Deck 4	4 110 €	<b>2 870 €</b>
Prestige Stateroom - Deck 5	4 270 €	<b>2 980 €</b>
Prestige Stateroom - Deck 6	4 440 €	<b>3 100 €</b>
Deluxe Suite	6 000 €	<b>4 200 €</b>
Prestige Suite - Deck 5	6 410 €	<b>4 480 €</b>
Prestige Suite - Deck 6	6 660 €	<b>4 660 €</b>
Owner Suite	8 660 €	-
Individual stateroom rate	consult us	
Safety and port taxes	450 €	

### OCTOBER 23<sup>RD</sup>, 2017

9 nights on board

#### CALLAO • VALPARAISO LE SOLÉAL

Superior Stateroom	3 260 €	<b>2 280 €</b>
Deluxe Stateroom	3 530 €	<b>2 470 €</b>
Prestige Stateroom - Deck 4	3 740 €	<b>2 610 €</b>
Prestige Stateroom - Deck 5	3 890 €	<b>2 720 €</b>
Prestige Stateroom - Deck 6	4 040 €	<b>2 820 €</b>
Deluxe Suite	5 460 €	<b>3 820 €</b>
Prestige Suite - Deck 5	5 830 €	<b>4 080 €</b>
Prestige Suite - Deck 6	6 060 €	<b>4 240 €</b>
Owner Suite	7 880 €	-
Individual stateroom rate	consult us	
Safety and port taxes	450 €	

### NOVEMBER 01<sup>ST</sup>, 2017

13 nights on board, return flight and transfer

#### VALPARAISO • USHUAIA LE SOLÉAL

Superior Stateroom	5 950 €	<b>4 160 €</b>
Deluxe Stateroom	6 380 €	<b>4 460 €</b>
Prestige Stateroom - Deck 4	6 850 €	<b>4 790 €</b>
Prestige Stateroom - Deck 5	7 360 €	<b>5 150 €</b>
Prestige Stateroom - Deck 6	7 910 €	<b>5 530 €</b>
Deluxe Suite	10 500 €	<b>7 350 €</b>
Prestige Suite - Deck 5	14 210 €	<b>9 940 €</b>
Prestige Suite - Deck 6	15 310 €	<b>10 710 €</b>
Owner Suite	19 750 €	-
Charter flights included	510 €	-
Individual stateroom rate	consult us	
Safety and port taxes	650 €	
Airport taxes <sup>(*)</sup>		36 €

### MARCH 07<sup>TH</sup>, 2018

13 nights on board, outward flight and transfer

#### USHUAIA • VALPARAISO LE BORÉAL

Superior Stateroom	5 950 €	<b>4 160 €</b>
Deluxe Stateroom	6 380 €	<b>4 460 €</b>
Prestige Stateroom - Deck 4	6 850 €	<b>4 790 €</b>
Prestige Stateroom - Deck 5	7 360 €	<b>5 150 €</b>
Prestige Stateroom - Deck 6	7 910 €	<b>5 530 €</b>
Deluxe Suite	10 500 €	<b>7 350 €</b>
Prestige Suite - Deck 5	14 210 €	<b>9 940 €</b>
Prestige Suite - Deck 6	15 310 €	<b>10 710 €</b>
Owner Suite	19 750 €	-
Charter flights included	510 €	-
Individual stateroom rate	consult us	
Safety and port taxes	650 €	
Airport taxes <sup>(*)</sup>		36 €

### MARCH 20<sup>TH</sup>, 2018

12 nights on board

#### VALPARAISO • GUAYAQUIL LE BORÉAL

Superior Stateroom	4 350 €	<b>3 040 €</b>
Deluxe Stateroom	4 700 €	<b>3 290 €</b>
Prestige Stateroom - Deck 4	4 980 €	<b>3 480 €</b>
Prestige Stateroom - Deck 5	5 180 €	<b>3 620 €</b>
Prestige Stateroom - Deck 6	5 390 €	<b>3 770 €</b>
Deluxe Suite	7 270 €	<b>5 080 €</b>
Prestige Suite - Deck 5	7 770 €	<b>5 430 €</b>
Prestige Suite - Deck 6	8 080 €	<b>5 650 €</b>
Owner Suite	10 510 €	-
Individual stateroom rate	consult us	
Safety and port taxes	600 €	

### APRIL 01<sup>ST</sup>, 2018

13 nights on board

#### GUAYAQUIL • COLON LE BORÉAL

Superior Stateroom	5 180 €	<b>3 620 €</b>
Deluxe Stateroom	5 600 €	<b>3 920 €</b>
Prestige Stateroom - Deck 4	5 930 €	<b>4 150 €</b>
Prestige Stateroom - Deck 5	6 170 €	<b>4 310 €</b>
Prestige Stateroom - Deck 6	6 420 €	<b>4 490 €</b>
Deluxe Suite	8 660 €	<b>6 060 €</b>
Prestige Suite - Deck 5	9 250 €	<b>6 470 €</b>
Prestige Suite - Deck 6	9 620 €	<b>6 730 €</b>
Owner Suite	12 510 €	-
Individual stateroom rate	consult us	
Safety and port taxes	650 €	

### APRIL 14<sup>TH</sup>, 2018

7 nights on board

#### COLON • FORT-DE-FRANCE LE BORÉAL

Superior Stateroom	2 790 €	<b>1 950 €</b>
Deluxe Stateroom	3 020 €	<b>2 110 €</b>
Prestige Stateroom - Deck 4	3 200 €	<b>2 240 €</b>
Prestige Stateroom - Deck 5	3 330 €	<b>2 330 €</b>
Prestige Stateroom - Deck 6	3 460 €	<b>2 420 €</b>
Deluxe Suite	4 670 €	<b>3 260 €</b>
Prestige Suite - Deck 5	4 990 €	<b>3 490 €</b>
Prestige Suite - Deck 6	5 190 €	<b>3 630 €</b>
Owner Suite	6 740 €	-
Individual stateroom rate	consult us	
Safety and port taxes	350 €	

(\*) for details, please refer to General Terms and Conditions pages 50 to 54.



# Your cruises in the Caribbean

DECEMBER 04<sup>TH</sup>, 2017

7 nights on board

FORT-DE-FRANCE • POINTE-À-PITRE

LE PONANT

Marie Galante Stateroom	3 140 €
Marie Galante Premium Stateroom	3 420 €
Antigua Stateroom	3 690 €
Individual stateroom rate	consult us
Safety and port taxes	350 €
"Golf package" supplement	790 €

DECEMBER 11<sup>TH</sup>, 2017

6 nights on board

POINTE-À-PITRE • POINTE-À-PITRE

LE PONANT

Marie Galante Stateroom	3 140 €
Marie Galante Premium Stateroom	3 420 €
Antigua Stateroom	3 690 €
Individual stateroom rate	consult us
Safety and port taxes	300 €
"Golf package" supplement	870 €

DECEMBER 18<sup>TH</sup>, 2017

9 nights on board

POINTE-À-PITRE • FORT-DE-FRANCE

LE PONANT

Marie Galante Stateroom	4 730 €	3 310 €
Marie Galante Premium Stateroom	5 140 €	3 590 €
Antigua Stateroom	5 550 €	3 880 €
Individual stateroom rate	consult us	
Safety and port taxes	450 €	

DECEMBER 27<sup>TH</sup>, 2017

7 nights on board

FORT-DE-FRANCE • FORT-DE-FRANCE

LE PONANT

Marie Galante Stateroom	4 450 €	3 110 €
Marie Galante Premium Stateroom	4 900 €	3 430 €
Antigua Stateroom	5 350 €	3 740 €
Individual stateroom rate	consult us	
Safety and port taxes	350 €	



(\*) for details, please refer to General Terms and Conditions pages 50 to 54.

# GENERAL TERMS AND CONDITIONS OF SALE

## Important notice

These General Terms and Conditions of Sale (GTCS) form an integral part of the Contract entered into by CDP and the Traveller. The Particular Terms and Conditions of Sale (PTCS) – which are specific to each Cruise season, summer or winter – may create an exception to these General Terms and Conditions of Sale. In any event, the specifications of the Cruise Ticket and of the Passenger Ticket shall prevail over the General and Particular Terms and Conditions of Sale. All these contractual documents make up the Contract entered into by CDP and the Traveller.

In the event that a provision in these General Terms and Conditions of Sale and/or in the Contract breaches a mandatory legal provision, and/or is considered as invalid, this invalidity shall not affect the validity of the other clauses.

In accordance with Law No. 78-17 of 6 January 1978 regarding data privacy, Travellers have the right to view and correct any personal information that concerns them, and that Compagnie du Ponant may be required to gather for the purposes of its business activities.

## 1. Definitions:

1.1 **“Tickets”**: refers interchangeably to Transportation, Cruise, and/or Airline Tickets.

1.2 **“Airline Ticket”**: A document that contains the specifications of the air transportation contract via which the Airline undertakes to carry the Traveller between the airports mentioned therein.

1.3 **“Cruise Ticket”**: a document that contains the specifications of the cruise contract via which the Organiser of the Cruise undertakes to have the Traveller carried by the Sea Carrier, and to provide them with the amenities and services that are mentioned on the Cruise Ticket. The Cruise Ticket delivered to the Traveller is governed by the general terms and conditions of the Cruise Ticket.

1.4 **“Passenger Ticket”**: a document that contains the specifications of the passenger transportation agreement via which the Sea Carrier undertakes to carry the Traveller between the ports mentioned therein. The Passenger Ticket delivered to the Traveller is governed by the general terms and conditions of the Passenger Ticket.

1.5 **“CDP”**: Compagnie du Ponant, a simplified joint stock company, which has its registered office at 408, avenue du Prado 13008 Marseille, with share capital of €3,644,607. The company is registered on the Marseille Trade and Companies Register under No. 344 497 011, holds Government Licence No. 013.06.0005, is a member of SNAV (French National Travel Agents' Association) and is registered with ATOUT France under No. IMO13120040. The company's financial cover is provided by APST, 15 avenue Carnot, 75017 Paris. Compagnie du Ponant has subscribed to an insurance policy covering its Professional Civil Liability under No. AA714708 with Generali Assurance IARD – 7 boulevard Haussmann – 75456 Paris Cedex 09.

1.6 **“Signing of the Contract”**: refers to the point when the contract is entered into between the Traveller(s) and CDP, i.e. when the latter confirms their booking to the Traveller.

1.7 **“General Terms and Conditions of Sale”** or **“GTCS”**: the clauses in this document.

1.8 **“Particular Terms and Conditions of Sale”** or **“PTCS”**: the contractual clauses applicable to the Contract, which are specific to each Cruise season – summer or winter.

1.9 **“Contract”**: all the respective obligations incumbent upon CDP and the Traveller, as specified on the invoice and the Tickets, as well as in the GTCS and PTCS.

1.10 **“Cruise”**: a round-trip by sea as described in the CDP Sales Brochure and/or on the CDP website, and on the Cruise Ticket.

1.11 **“Expedition Cruise”**: cruise during which exploration excursions are planned in inflatable dinghies, accompanied by nature guides.

1.12 **“Pre-Booked excursion and/or extension”**: Services including Transfers, sight-seeing trips and ground services before, during and/or after the Cruise.

1.13 **“Fixed-Rate Package”**: refers to the combination of a Cruise with a flight and/or a Transfer and/or Pre- and Post-Cruise Services, and/or Pre-Booked Excursions and/or Extensions, and/or any other tourism service booked when Signing the Contract. The Fixed-Rate Package does not include land excursions that have not been booked at the same time as the Cruise, and the services offered on board the ship.

1.14 **“Organiser of the Cruise”**: a private individual or a company that undertakes to have the Travellers carried by the Sea Carrier, and to provide them with the amenities and services that are mentioned on the Cruise Ticket, and whose letterhead appears on the Cruise Ticket.

1.15 **“Disabled Person”** or **“Person with Reduced Mobility”**: any person affected by a restriction on their movements or a restriction preventing them from enjoying the Services agreed due to a significant alteration of one or several of their physical, sensory, mental, cognitive, or psychological functions, to multiple handicaps, or to a debilitating health problem.

1.16 **“Service”**: refers to any Cruise, Fixed-Rate Package, flight, Transfer, Pre- and Post-Cruise Service, Pre-Booked Excursion and/or Extension, and any other tourism service booked when Signing the Contract.

1.17 **“Price”**: total cost of the Services booked by the Traveller.

1.18 **“Pre- and Post-Cruise Services”**: Services including Transfers, sight-seeing trips and ground services before and/or after the Cruise, as mentioned in the Contract.

1.19 **“Transfer”**: an operation that consists in carrying Travellers between the port of embarkation and/or disembarkation and a meeting point determined by CDP (airport, hotel, or railway station, etc.).

1.20 **“Sea Carrier”**: a private individual or company that operates the ship that carries the Travellers, and whose letterhead is shown on the Passenger Ticket.

1.21 **“Air Carrier”**: a company that under takes to carry the Travellers by air, and whose letterhead is shown on the Airline Ticket.

1.22 **“Vendor”**: a private individual or legal entity that has sold the Services included in the Contract directly to the Travellers.

1.23 **“Travellers”**: any person named at the time of the booking and/or Signing of the Contract, and whose name is shown on an invoice and/or on the Tickets issued by CDP or by the Vendor.

## 2. Acceptance and application of the General Terms and Conditions

2.1 The Signing of the Contract implies acceptance of all these GTCS and PTCS by the Traveller, with no reservations, together with the clauses and conditions in the Passenger Ticket and the Cruise Ticket.

## 3. Applicable legislation

3.1 Where CDP acts in the capacity of a Sea Carrier, the contractual relations between CDP and the Traveller shall be governed by the Passenger Ticket and by the provisions of the French Transport Code, and specifically Articles L. 5420-1 to L. 5421-12, by the Application Decree of 31 December 1966, and by the provisions of the London International Convention of 19 November 1976, as well as by the provisions of Regulation 392/2009 issued by the European Parliament and Council on 23 April 2009, where applicable, which form an integral part of the Passenger Ticket.

3.2 Where CDP is the Organiser of the Cruise, the contractual relations between CDP and the Traveller shall be governed by the Contract, which includes the Cruise Ticket, as well as by Articles 47 to 49 of Law No. 66-420 of 18 June 1966 regarding chartering and sea carriage contracts, and its application decree of 31 December 1966.

3.3 Where CDP is the Vendor of a tourism package within the meaning of Article L. 211-2 of the French Tourism Code, the contractual relations between CDP and the Traveller shall be governed by the Contract, and by Articles L. 211-1 et seq. and R. 211-1 et seq. of the French Tourism Code.

## 4. Payment of the Price

4.1 The Signing of the Contract implies payment of 25% of the Price of this Service as an advance, while the balance must be paid within 60 business days at most prior to the beginning of the first Service featured in the Contract.

4.2 As an exemption to Article 4.1, the balance must be paid within 90 days at most before the beginning of the first Service featured in the Contract in the case of Expedition Cruises.

4.3 Once the Service has been paid for in full, the Traveller shall receive the Ticket(s) and the exchange vouchers, where applicable, together with the insurance policy, if that policy has been

subscribed directly with CDP.

## 5. Rates and reductions per person and per cruise

5.1 **Single Supplement**: The single supplement shall apply to any person who occupies a cabin on their own. The Supplement shall apply to the port-to-port section (excluding port taxes) of the Ponant Bonus rate in effect. This supplement may change depending on the occupancy rate of the cruises concerned. It may therefore change for certain categories of cabins and/or suites only, or for an entire cruise at any time with no notice. The single supplement shall be offered in certain cabin categories for a selection of cruises. This selection shall be updated in accordance with the occupancy rate, and can be viewed on our website at [www.ponant.com](http://www.ponant.com).

5.2 Depending on the occupancy of the ship (with the exception of the LE PONANT yacht) the time of reservation, a “guaranteed” Deluxe Deck 3 cabin may be offered. This means that the booking has been made in the Deluxe Deck 3 category without a cabin number being assigned, and that the cabin shall be assigned at the Company's discretion, and may change at any time until embarkation. Once the cabin number has been assigned, no request for a change may be accepted. This formula offers the advantage of potentially benefiting from a cabin in a higher category without a price surcharge. The minimum category selected at the time of booking shall be guaranteed in any event.

## 6. Passports, Visas and Vaccination Certificates

6.1 Every Traveller who is a French national shall be responsible for performing the administrative and/or health formalities required by the countries concerned by the Services, including those formalities disclosed by CDP and viewable on the [www.ponant.com](http://www.ponant.com) website as well as in the brochure, prior to Signing the Contract.

6.2 Travellers who are foreign nationals must contact the relevant embassies and/or consulates and perform the administrative and/or health formalities required by the countries concerned by the Services prior to Signing the Contract.

6.3 CDP shall not be held responsible for the consequences of a Traveller failing to comply with police, customs, or health formalities prior to or during the length of the Services under any circumstances. A Traveller who is unable to board a flight or a ship because they cannot present the documents required may not claim any refund or compensation.

6.4 In any event, Travellers are advised to check all the information with the authorities concerned prior to the departure date. CDP advises Travellers to consult the country factsheets relating to the chosen destinations prepared by the French Ministry of Foreign Affairs on the <http://www.diplomatie.gouv.fr/fr/conseils-aux-voyageurs> website, or to make enquiries by telephone (+33 1 43 17 53 53, French Ministry of Foreign Affairs). CDP specifically draws Travellers' attention to the fact that the information provided may change up until the departure date, and they are advised to consult that information up until the time of departure.

CDP invites Travellers to adjust their behavior to the visited country, to exercise vigilance and to avoid carrying valuable objects during their travel.

## 7. Embarkation and sea carriage conditions

### • General rules

7.1 The Traveller must present themselves for embarkation under the conditions determined by the Passenger Ticket, and at least two hours before the ship's scheduled departure time. The Passenger Ticket and/or the Cruise Ticket issued by CDP shall only be valid for the Cruise and the ship mentioned on the ticket.

7.2 The purpose of the Passenger Ticket is to transport the Travellers and their luggage from the time when they embark at the port of departure to the time when they disembark at their destination.

7.3 All Travellers must hold a valid passport, or an identity card, where applicable, that are valid for six months following the date of their return, together with the visas and vaccination certificates likely to be required in the ports where the ship calls and the port of destination. Every Traveller shall be personally responsible for complying with the legal and regulatory provisions required prior to departure. The Carrier, the Organiser of the Cruise, and/or CDP, and/or the Captain may refuse to allow a Traveller who does not show the documents enabling them to disembark at the port of destination port and at the scheduled ports of call to embark or disembark.

7.4 If a Traveller who has reserved a Cruise solely on a port-to-port basis organises their own air or ground transport to the port of embarkation and/or to their home address, they are strongly advised to purchase changeable and refundable transportation tickets, and to allow for reasonable transfer times between the station, the airport, and the port. In the event of a delay, cancellation or change, CDP shall not be responsible for the transport and Transfer expenses and/or for any other kind of amenities and services not included in the Cruise Ticket that were not directly purchased from CDP. CDP shall not be responsible for any incidents or accidental damage to equipment and/or bodily injury that may occur during travel to and/or from the ship.

7.5 Every Traveller shall guarantee that they are fit to travel by sea, and that their state of health or behaviour shall not harm the other Travellers or the proper performance of the Services agreed and/or proposed. If a Traveller's state of health is likely to limit their ability to enjoy the Services agreed, or to disrupt the proper provision of those Services, they must inform CDP, and must provide a medical certificate certifying their fitness on request. Any health problem, if known, must be mentioned to CDP's Medical Department in writing when Signing the Contract or before the departure of the ship (or prior to the beginning of the Services) at the latest.

7.6 Travellers shall be responsible for Doctor's appointments, medical care, and medication on land or on board the ships. All Travellers must ensure that they are covered by an appropriate medical insurance policy.

7.7 In the event of the threat of an epidemic, the Carrier, the Organiser of the Cruise, CDP, the Captain of the ship, or any other local health authority may demand that the Traveller fill in a health questionnaire and take a screening test, where applicable, before or at the time of embarkation or disembarkation, including during port calls.

7.8 In the specific case of Expedition Cruises, where you are reminded that any medical facilities are several days away by sea, a mandatory full medical questionnaire (a document provided on Signing the Contract) must be filled in by the Traveller's referring attendant physician between 90 and 45 days prior to the beginning of the Services, and must be returned to CDP's Medical Department ([medical@ponant.com](mailto:medical@ponant.com)) by mail or e-mail within 40 days prior to the beginning of the Services at the latest. Any medical certificate issued prior to the determined period shall not be valid. Any Traveller who has not returned their duly completed mandatory medical certificate shall not be allowed to embark, and shall not benefit from any refund.

7.9 Travellers must comply with the rules on board throughout the journey. Travellers are required to attend any safety demonstrations and explanations that are organised on board, and to follow the crew's instructions at all times.

7.10 If they consider it necessary, the Carrier, the Organiser of the Cruise, CDP and/or the Captain of the ship may terminate the contract and refuse to carry any Traveller who does not comply with the conditions for entering into the destination ports, or whose presence on board could be harmful to the comfort, health, and safety of the other Travellers and the crew, breach the laws and rules of the ports where the ship calls, or render the Carrier, the Organiser of the Cruise, and/or CDP liable for the Traveller's legal defence or repatriation. Accordingly, the Organiser of the Cruise, the Carrier, and/or CDP, and/or the Captain of the ship may decide to take the following appropriate measures: Refuse to allow the Traveller(s) to embark or disembark in any port that the ship calls at; 2) Disembark the Traveller(s) at any port that the ship calls at; 3) Transfer the Traveller(s) to another ship; 4) Confine the Traveller(s) on board, in their cabin, or in a cabin managed by the on-board medical team; 5) Have the doctor and their team administer any drugs, medications, or other permissible substances, and/or confine the Traveller in hospital or in any other similar facility at the port of destination if the on-board doctor considers it necessary.

### • Disabled Persons and Persons with Reduced Mobility

7.11 Due to safety requirements, every Traveller must be independent, or travel with a person who is capable of providing them with all the assistance required during the performance of



the Services.

7.12 Travellers whose mobility is restricted due to a physical disability or to a condition that requires special treatment and/or special assistance, including people who use wheelchairs, must inform CDP in writing at the time when they make the booking request, or as soon as the Traveller becomes aware of their disability if that disability occurs following the booking, but in any event at least 30 days prior to the beginning of the Services, in order to enable CDP to confirm to the Traveller that they will be physically able to enjoy the Cruise on board the ship and/or the Services agreed, inter alia.

7.13 The Organiser of the Cruise, the Carrier, and/or CDP, and/or the Captain reserve the right to refuse access to Travellers who have failed to inform CDP or the Vendor about a disability or their need for assistance, if such disability and need are not compatible with the applicable safety rules and the specific regulations for the navigation area, or require care that CDP and/or the Carrier would not be in a position to provide, or if the design of the passenger ship, and the port infrastructure and facilities, including port terminals, make the embarkation, disembarkation, or transportation of the person concerned under satisfactory safety conditions impossible.

7.14 Going ashore may be difficult or even impossible for Travellers with Restricted Mobility, or Disabled Travellers, especially in the event of disembarkation in launches or/and excursions in dinghies.

7.15 Once they have received CDP's written agreement, Travellers who use a wheelchair must embark with their own wheelchair, and must absolutely be accompanied by a person who is capable of assisting them at all times. Every disembarkation shall nonetheless be subject to the approval of the Captain.

7.16 The Boréal, the Austral, the Soléal and the Lyrial all have three cabins that are specially equipped to receive Disabled Persons, or Persons with Restricted Mobility. Please note that the Le Ponant yacht specifically does not allow access to Persons with Restricted Mobility or Disabled Persons due to a different design.

#### • Children and Pregnancy

7.17 Children under three years of age shall not be authorised to embark on the ships. Children aged over three and under eight may only embark on the ships on presentation of an embarkation authorisation, which shall preferably be requested as soon as the child is registered as a Traveller, and issued against a release, and which must be presented at the time of embarkation in all cases, failing which the Organiser of the Cruise, the Carrier, and/or CDP shall not be able to admit the child on board.

7.18 In the case of all the Expedition Cruises, children must be fully independent during all the outside activities organised and during disembarkation in rubber dinghies, be sufficiently tall to sit on the inflatable sides of the dinghies, and old enough to understand, and immediately respond to the orders given by the persons in charge. As a result, children's participation in any activity in an inflatable dinghy shall be subject to the agreement of the Captain and of the Expedition Head, depending on the sea conditions, and the difficulty of disembarking at each location visited.

7.19 Minor children shall remain under their parents or guardians' full and entire responsibility when on board and/or during excursions.

7.20 As the ships do not have any facilities to enable women to give birth on board, women who are over six months pregnant shall not be allowed to embark on the ships. In any event, pregnant women travelling on board the ship are advised to consult a doctor prior to embarkation, in order to ensure that their state of health is compatible with the planned cruise.

#### • Authorised luggage

7.21 Every Traveller must label each luggage item correctly, and indicate their full name, the name of the ship, their destination, and their cabin number in a highly legible manner. The markings must be visible and permanent.

7.22 Goods, property, and items where the contents may threaten the health and safety of the other Travellers and their Luggage, of persons or of property, and may damage or pollute the ship, inflammable, explosive, corrosive, hazardous, or odorous materials, or materials that are likely to leak, items where importation is prohibited or that do not comply with customs or police regulations, and generally speaking property and items other than those intended for the Traveller's personal use are prohibited on board and in their luggage (hereinafter the "Prohibited Items"). In any event, the Traveller shall be liable for any injury, loss, or damage suffered as a result of the presence of Prohibited Items in their luggage or in their cabin, and shall hold the Organiser of the Cruise, the Carrier, and/or CDP harmless against any proceedings that may be initiated against them as a result of the presence of these Prohibited Items on board or at the time of embarkation or disembarkation. These Prohibited Items may be disembarked, destroyed, thrown into the sea, or rendered harmless at any time and any place by the Organiser of the Cruise, the Carrier, the crew, and/or CDP, without compensation, and notwithstanding payment of any destruction costs by the Traveller.

7.23 Travellers must keep an eye on their luggage and personal effects throughout the length of the Services, including their stay on board and during embarkation, transfer, and disembarkation operations. The Organiser of the Cruise, the Carrier, and/or CDP shall decline any liability for luggage that is left unsupervised by the Traveller, and where the latter has not taken all necessary precautions to avoid theft, loss, or damage. The Organiser of the Cruise, the Carrier and/or CDP shall not be liable for fragile items, jewellery, watches, money, cash, computers and other electronic appliances, mobile phones, or any other valuable items that the Traveller has not declared as valuables, and entrusted for custody on board with a descriptive inventory and an estimate, and for which they have not paid the corresponding proportional custody fees.

7.24 Travellers shall be liable under civil and criminal law for any direct or indirect damage that they cause to the Organiser of the Cruise, the Carrier, and/or CDP, and to the other Travellers or third parties. They shall be solely liable for any fine or penalty inflicted by the relevant authorities on their account.

7.25 Travellers shall agree to allow the Organiser of the Cruise, the Carrier, the officers of the crew and/or CDP, together with the customs, health and/or administrative authorities in port of call countries or the State where the ship is registered free access to their cabin, luggage, and personal effects on request and without delay.

7.26 The Organiser of the Cruise, the Carrier, and/or CDP shall not be liable for the damage caused to photographic, telephone, and electronic equipment and cameras that are lost or damaged during the performance of the Services, whether on board the ship or in ancillary facilities, or during embarkation and disembarkation operations, or for any damage caused to items that have fallen into the water.

#### • Pets

7.27 Pets, including service or medical assistance animals are prohibited on board the ships, and are not admitted for embarkation.

#### • Smoking policies

7.28 The ships are non-smoking except for the specifically designated areas on the outside decks (the policy also applies to electronic cigarettes).

#### 8. Air carriage

8.1 The full Airline Tickets shall be presented in the form of electronic tickets. The surnames and given names must strictly be those indicated on the Traveller's valid passport. Any error or request for alteration shall result in the purchase of a new Airline Ticket.

8.2 In accordance with French Decree No. 2007-669 of 2 May 2007 regarding the obligation to inform Travellers of the identity of the Airline Carrier, CDP shall inform Travellers of the identity of the known Airline Carrier(s) likely to provide air transportation as at the date when they register. In the event of a change subsequent to the signing of the Contract, CDP undertakes to disclose any changes in the identity of the Airline Carrier(s) prior to departure as soon as it becomes aware of them.

8.3 Airline companies may enter into so-called mutual code-sharing agreements, which consist in marketing a flight under their own name even though it may be operated by an aircraft belonging to another airline.

8.4 The term "direct flight" means that there shall be no change of aircraft, but does not exclude the possibility of one or several stop-overs. The term "non-stop direct flight" means a flight with no change of aircraft and no stop-overs.

8.5 The timetables and types of transport mentioned by CDP shall be those disclosed by the Airline Carriers. They shall therefore be indicative up until the time of departure, and subject to alterations for all kinds of reasons (additional stop-overs, weather conditions, air traffic control authorisations, and strikes, etc.). In accordance with the Warsaw and Montréal Conventions, the timetables and itineraries, and the departure and destination airports shall never be a contractual feature of the Transportation Ticket; under these conditions, CDP cannot be held liable for any changes beyond its control.

8.6 CDP cannot be held responsible for any technical, climate-related or political incident, delay, cancellation or strike, additional stop-over, or change of aircraft or routing, etc. that may arise during the air transportation, and no compensation may result on any grounds whatsoever. If a Traveller wishes to waive their right to benefit from a Service, they shall be liable for the cancellation fees set out below.

8.7 The Airline Carrier's responsibility shall be limited in the event of damage, complaints, or claims of any kind, in accordance with the conditions set out on the Airline Tickets. CDP shall not refund any expenses (taxis, meals and hotels, etc.) if the Traveller is under the responsibility of the Airline Carrier. The consequences of any accidents and/or incidents that may arise during the performance of the air transportation shall be governed by the Warsaw and Montréal Conventions, and by the local regulations governing domestic transport systems in the country concerned.

8.8 Depending on the Airline Carrier, the usual baggage allowance on regular international flights (excluding the benefits granted to members of loyalty programmes) is strictly limited to a maximum of 23 kg in the hold and 8 kg in the cabin per Traveller. On regular domestic flights, the allowance usually ranges between a maximum of 15 and 20 kg in the hold. On charter flights operated by CDP, the maximum hold luggage allowance is 23 kg (subject to confirmation by the selected Airline Carrier) and 5 kg for each item of luggage in the cabin. Travellers are advised to pay close attention to this restriction. Airline Carriers do not hesitate to charge additional fees for excess baggage, and sometimes refuse to check luggage that is too heavy or too bulky due to strict security rules. The liability of CDP and of the Airline Carrier cannot be engaged in the event of refusal to check in a Traveller due to the fact that their luggage exceeds the allowance.

#### 9. Transfer of the Contract

9.1 A Traveller may transfer their Contract to a third party who fulfils the same conditions as them for the performance of all the Services, as long as those Services have not begun, in accordance with Article R. 211-7 of the French Tourism Code, and only where this Code applies to CDP.

9.2 The transferor and/or the transferee shall be required to pay the resulting fees. They must inform CDP of this decision by any means that enables them to obtain an acknowledgement of receipt (registered letter with acknowledgement of receipt, e-mail, or fax, etc.) within 60 business days at the latest prior to the beginning of the Services.

9.3 In the event that a Traveller transfers their Contract without informing CDP in accordance with the procedures provided for above, this transfer shall not be valid, and the Services provided for in the Contract shall be cancelled with no possible refund.

#### 10. Cancellation or alteration of the Contract by the Traveller

10.1 Pursuant to Article L. 121-21 of the French Consumer Code, Travellers are informed of the fact that they do not benefit from the right of withdrawal provided for in Article L. 121-17 of said Code.

10.2 Travellers cannot alter the Services provided for in the Contract without CDP's prior agreement.

10.3 If a Traveller alters or cancels a portion or all of the Services provided for in the Contract, shall need to inform CDP via any means that enables them to obtain an acknowledgement of receipt (fax, email, or registered letter with acknowledgement of receipt) as soon as the event resulting in this alteration or cancellation occurs. The date on which the document was sent shall be the date on which the alteration and/or cancellation fees are invoiced.

Requests to alter a cruise shall only be accepted subject to Compagnie du Ponant being informed within a timeframe of at least 90 days before the departure of the cruise, via the means set out above. This timeframe shall be increased to 150 days for Expedition Cruise programmes.

Beyond that deadline, alteration requests shall be considered as cancellation requests, and shall therefore be managed according to Paragraph 10.5, which governs cancellation fees.

The alteration terms and conditions exclusively involve the option for the traveller to replace a port-to-port cruise with another port-to-port cruise with Compagnie du Ponant.

10.4 Alteration fees:

In the event of an alteration involving a higher-value travel package, and subject to compliance with the terms and conditions set out in Points 10.4.a to 10.4.d, no alteration fee shall be applied to the cruise service, or to the other services, (e.g. air travel). The rebooking fees shall amount to the expenses already incurred by Compagnie du Ponant:

-10.4.a: The passenger may alter their cruise subject to replacing it with a more expensive cruise than the one that is being replaced;

-10.4.b: The departure date of the cruise booked as a replacement must fall within a maximum timeframe of 12 months as from the date when the alteration request was made;

-10.4.c: The reservation and payment of the deposit for the replacement cruise must be made at the same time as the alteration request;

-10.4.d: The replacement cruise selected shall become non-exchangeable and non-refundable from that point; the passenger may only cancel it.

In the event that the Contract is switched to a Service of a lower value than the initial value, alteration fees shall apply, and shall be equal to those in the cancellation terms and conditions set out in Article 10.5 below. The fee percentage shall then apply to the difference between the price of the initial Service and/or of the new Service.

#### Specific terms and conditions for an alteration request from Ponant Yacht Club High Admirals

In the event of the 1st alteration of a tourism package: no fees shall be applied to the cruise service, as long as the request is made within a timeframe of at least 90 days before the departure of the cruise. This timeframe shall be extended to 150 days for Expedition Cruise programmes.

Any alteration request aside from the alteration of the 1st cruise shall be subject to the specific allocation conditions set out in Article 10.4 above.

In the case of other services (e.g. air travel), the alteration fees shall amount to the expenses already incurred by Compagnie du Ponant:

10.5 Cancellation fees:

#### For the Expedition Cruises:

• From the registration confirmation date up to 91 days prior to the departure of the Cruise: 25% of the total amount of the Services;

• Between 90 days and 76 days before the departure of the Cruise: 50% of the total amount of the Services;

• Between 75 days and 61 days prior to the departure of the Cruise: 75 % of the total amount of the Services;

• Less than 61 days prior to the departure of the Cruise: 100 % of the total amount of the Services.

#### For other cruise programmes:

• From the registration confirmation date up to 91 days prior to departure: 10% of the total amount of the Services;

• Between 90 days and 61 days before the departure of the Cruise: 25% of the total amount of the Services;

• Between 60 days and 46 days prior to the departure of the Cruise: 50 % of the total amount of



## GENERAL TERMS AND CONDITIONS OF SALE

the Services;

- Between 45 days and 31 days prior to the departure of the Cruise: 75% of the total amount of the Services;
- Less than 30 days prior to the departure of the Cruise: 100 % of the total amount of the Services.

### For the other Services:

No refund shall be granted for any cancellation or waiver of an airline or ground Service included in the contract, or of any service that forms part of the Cruise, for any reason whatsoever.

10.6 In the event that a Traveller is prevented from taking the Cruise by a force majeure event, or due to their death, the Contract shall be terminated via the notice provided by the Traveller or their beneficiaries prior to the execution of the Contract. One quarter of the price of the Contract shall then be payable to CDP. The same conditions shall apply to the family members of a Traveller who was prevented from taking the Cruise by a force majeure event or who has died, and who were meant to be travelling with them.

10.7 A Traveller who does not present themselves at the departure of a Service, or who finds themselves unable to depart, or decides not to depart for any reason whatsoever, including due to a connection delay, cannot claim any refund.

10.8 Once the Services have begun, the Traveller shall be required to pay the full price of the Contract, regardless of the reason that may lead them to decide to waive it.

### **11. Cancellation, interruption, or alteration of the Contract by CDP**

11.1 The arrival and departure times are provided for information purposes and are not definitive. In its capacity as the Organiser of the Cruise, and/or the Carrier, and/or the Vendor of a Package, CDP cannot guarantee that the times will fit in with (air plane and train, etc.) connection timetables.

11.2 CDP may assign travellers different cabins than those initially provided for.

11.3 CDP reserves the right to interrupt a Cruise or to change its itinerary for any reason that it shall consider valid; in this case, CDP cannot be held liable for any loss or harm.

11.4 Specifically in the event of adverse weather conditions, or due to the political or social situation in a port of call country, or due to any other event that may endanger the safety of the Travellers, property, or the ship, or in the event of orders imposed by public authorities, the Organiser of the Cruise, and/or the Carrier, and/or CDP shall have the option to change the itinerary or the ports of call or destination, to delay the trip or to end it, to divert the ship, to tow another ship or to be towed, to transfer the Travellers and their luggage to any other means of transport, even if such transfer results in extending or shortening the length of the programme.

11.5 The ship may provide assistance to any person or property at sea under all circumstances, and cannot be held liable for the consequences of a change to the Cruise programme for that reason.

11.6 Where CDP is required to alter the Cruise after the Travellers have embarked for reasons beyond its control, the Travellers cannot claim any compensation other than the refund of the Services that were not provided and not replaced, or of the unused portion of the Tickets less any expenses incurred, from either CDP, the Carrier, or the Organiser of the Cruise. Conversely, CDP may ask the Travellers to pay a price supplement corresponding to the additional services provided to the Travellers due to an extension of the trip.

11.7 In the case of external events beyond the control of the Organiser of the Cruise, and/or the Carrier, and/or CDP, or for any reason relating to the safety of the Travellers, or of the ship, or due to an insufficient number of participants, CDP may cancel the Cruise, and must inform the Travellers and/or the Organiser of the Cruise, where applicable, by registered letter with acknowledgement of receipt, or via e-mail, or via a press release.

11.8 CDP's Cruises and other Services are subject to a minimum number of participants.

11.8.1 CDP reserves the right to cancel a Cruise up to 21 days prior to departure if the minimum number of Travellers registered is less than or equal to 50% of the ship's "passenger capacity" (200 Passengers for the Expedition Cruise programs, 244 passengers for the other Cruises on board the Austral, Boréal, Lyrial and Soléal, and 55 passengers for the Le Ponant Yacht).

11.8.2 CDP reserves the right to cancel any other service other than the Cruise if the number of Passengers is less than 20 participants (unless specified otherwise).

11.9 Where CDP is the Organiser of the Cruise, and regardless of the reason for the cancellation, no compensation shall be payable to the Traveller, who shall have a choice between the following solutions: (i) The full refund of the price of the Contract, (ii) another Service at an identical price, (iii) a Service at a lower price, and the refund of the difference in price between the two Services on the basis of the published prices. Travellers must inform CDP of their choice as soon as possible, and in any event prior to the cut-off date mentioned in the cancellation documents.

11.10 The means of transport that are the subject of the Services shall be reserved by CDP in accordance with the terms and conditions of each operator who provides these services. CDP reserves the right to substitute one means of transport for another, or one hotel for another in the same category. In the second case, if the hotel is in a lower category, the excess amount paid shall be refunded to the Travellers.

11.11 All the Services shall be offered within the limit of the places available. If there is no more room in the category proposed, CDP may offer additional places in exchange for a price supplement, depending on availability.

### **12 Liability**

12.1 Where it acts in the capacity of a Sea Carrier, CDP shall be liable for any harm caused to Travellers in accordance with the provisions and compensation limits provided for in the following legislation, depending on their respective scopes of application, namely Articles L. 5421-1 to L. 5421-8 of the French Transport Code, and (EC) Regulation 392/2009 issued by the European Parliament and Council on 23 April 2009. Where this Regulation is applicable, the compensation limits assigned to the Carrier in the event of death or bodily harm amount to 400,000 drawing rights per Traveller and per event.

12.2 Where it acts in the capacity of a Sea Carrier, CDP shall be liable for any damage caused to luggage in accordance with the provisions and compensation limits provided for in the following legislation, depending on their respective scopes of application, namely Articles L. 5421-9 to L. 5421-12 of the French Transport Code, Decree No. 67-268 of 23 March 1967, as amended by Decree No. 86-1065 24 September 1986, and (EC) Regulation 392/2009 issued by the European Parliament and Council on 23 April 2009. Where this Regulation is applicable, the compensation limits assigned to the Carrier in the event of loss of or damage to luggage shall be 2,250 special drawing rights for each passenger and trip, while an excess of 149 special drawing rights per Traveller shall be applied in any event. Where (EC) Regulation 392/2009 does not apply, the maximum compensation for loss of or damage to luggage payable by the Carrier shall be €1,520 per Traveller and per trip.

12.3 In any event, where it acts in the capacity of a Sea Carrier, CDP shall benefit from the compensation limits included in the London International Convention of 19 November 1976, as amended by the 1996 Protocol; these limits shall prevail over any other limits determined by legislation where the application is not mandatory.

12.4 Where it operates as the Organiser of the Cruise, CDP shall be liable for any bodily harm or damage to property that occurs on board the ship or in its ancillary facilities or vessels during embarkation or disembarkation, or that occurs during carriage at sea within the same limits and under the same conditions as the Carrier. Where this damage or injury occurs outside such circumstances, but between the beginning and the end of the cruise, the compensation potentially payable to the Traveller by the Organiser of the Cruise and/or CDP shall be capped at 50% of the price of the Cruise.

12.5 Where it is involved in the capacity of the vendor of a fixed-price travel package within the meaning of the French Tourism Code, CDP shall be responsible for any harm or damage caused to Travellers or their luggage within the limits and conditions specified in Article L. 211-16 of said Code.

CDP's liability may specifically not be engaged in relation to the consequences of the following

events:

a) Loss or theft of the Tickets, failure to present the correct documents, or presentation of identity or health documents that are out of date or where the validity period is insufficient (identity card, passport, visas, and vaccination certificates, etc.), or that do not comply with the instructions mentioned in the documents delivered to the Traveller;

b) unforeseeable and unavoidable incidents or events that affect a third party to the travel contract (force majeure events). Where a cancellation is required by circumstances that have the nature of a force majeure event and/or for reasons relating to the security of Travellers, and/or as the result of an injunction issued by a French or foreign administrative authority.

12.6 CDP's liability in its capacity as the Organiser of the Cruise, and/or the Carrier, and/or the Vendor of a Package shall be expressly excluded in the case of non-pecuniary losses, loss of enjoyment and so-called punitive and or similar damages.

12.7 Where a Traveller is not allowed to embark on the ship – including after of during a port call – under the conditions mentioned in Articles 6.3, 6.9 and 6.10, neither CDP, in its capacity as Organiser of the Cruise, and/or the Carrier, and/or the Vendor of a Package, nor the Captain of the ship, nor the crew shall be held liable on any grounds whatsoever.

12.8 CDP shall not be held liable for bodily harm, or damage to property or non-physical damage caused by wars, blockades, riots, strikes, social conflicts, acts of piracy or terrorism, epidemics or periods of quarantine, natural disasters and catastrophes, nuclear fusion, fission, pollution or explosion or its consequences, the closure of the port of departure, of call, or destination, the impounding, requisition, or seizure of the ship for whatever reason, the use of the ship for special Government purposes, or due simply to the threat of the above events. Moreover, it shall not be held liable for any harm caused by the Traveller's deliberate involvement in an affray or in a hazardous activity or action that was not rendered necessary in order to safeguard human life.

12.9 CDP shall not be held liable under any circumstances for any damage caused by the interruption and/or the alteration of the trip as the result of a force majeure event, including, wars, blockades, riots, strikes, social conflicts, acts of piracy or terrorism, epidemics or periods of quarantine, natural disasters and catastrophes, nuclear fusion, fission, pollution or explosion or its consequences, the closure of the port of departure, of call, or destination, the impounding, requisition, or seizure of the ship for whatever reason, the use of the ship for special Government purposes, or due simply to the threat of the above events.

12.10 In the event that CDP is responsible for transporting luggage during a period prior or subsequent to the disembarkation of the ship in its capacity as the Organiser of the Cruise, and/or the Carrier, and/or the Vendor of a Package, it shall act as a representative on the Traveller's behalf, and its liability shall not replace the liability of the carriers who are effectively responsible for transporting the luggage.

12.11 Luggage that is not claimed at the time when the ship or any other means of transport arrives shall remain at the port at the Travellers' expense and at their own risk.

12.12 Any delay in delivering the luggage that inconveniences the Traveller may only give rise to the payment of a compensation amount that cannot exceed 20% of the amount that would be payable in the event of the loss of the luggage stowed in the hold under the terms of Article 11.2. CDP reserves a period of 3 (three) months to look for lost luggage.

12.13 Unless a specific written contractual agreement is in place, ground or air transport, Transfers, water sports and scuba diving from the deck, services included in the Pre- and Post-Cruise Services, Excursions and/or Extensions, excursions on land, including, where applicable, the booking of hotels and restaurants and guided tours when booked from the ship with CDP and invoiced by the latter, are supplied by independent service providers who are neither representatives nor employees of the Organiser of the Cruise, the Carrier, the Vendor of the Package, and/or CDP. Travellers shall use these services at their own risk, and CDP shall only be involved as an intermediary, in its capacity as the Organiser of the Cruise, the Carrier, and/or the Vendor of the Package, and shall not assume or engage any liability for the services, regardless of whether such liability involves bodily harm or damage to property, cancellation, delay or a change of programme.

12.14 Any Traveller who takes part in outside activities as part of the Expedition Cruises agrees to take part in them in good faith and solely at their own risk. In this case, participation engages the liability of each participant, in terms of their physical fitness, their safety, their behaviour, and their comfort. Travellers' attendance at the information briefings provided on board is mandatory. The liability of CDP, its Managing Directors, Directors, officers, crew members, and expedition team members, and the activity leaders cannot be engaged in the event of loss or damage suffered while taking part in outside activities offered during Expedition Cruises under any circumstances.

### **13. Price reviews**

13.1 The prices proposed by CDP are established in accordance with the economic conditions on the day when they are published. These economic conditions include, inter alia, the cost of transportation and fuel, the royalties and taxes relating to the services proposed (entry and/or exit duties in the countries visited, airport or port taxes, embarkation or disembarkation taxes, visa fees, and the cost of admission to tourist attractions), and the exchange rates used when setting the price of the programmes. CDP expressly reserves the right to review its prices. Any change in the cost of transportation and fuel, in taxes, royalties, in the euro and US dollar exchange rates, or special drawing rights and visa fees shall be fully reflected in the price of the trips, including travel agents' commissions, where applicable. Where the French Tourism Code applies, CDP also has the option to lower the Price pursuant to Article L. 211-12 of said Code, on the understanding that, in this case, no pricing review may occur less than 30 business days prior to the scheduled departure date.

13.2 Where the French Tourism Code applies, Travellers shall be informed of any increase in the Price via registered letter with acknowledgement of receipt – or via any other means as long as it enables the effective receipt of the correspondence to be proved – on the basis of a notice period of (30) days prior to the departure date. When they receive this notice, the Passenger and/or the purchaser of the Ticket(s) may cancel their contract and receive an immediate refund of the amount paid by informing the Vendor in writing within a period of 7 (seven) days following receipt of the notice of the price increase.

Any daily surcharge (S) in the case of cruise services only shall be calculated as follows:

$$S = \frac{\text{change in the price of fuel} \times \text{daily consumption}^{**}}{\text{Capacity of the ship}^{***}}$$

(\*) : MGO FOB Rotterdam 0.1% in US\$

(\*\*) : L'Austral, Le Boréal, le Soléal and Le Lyrial: 20 tonnes; Le Ponant: 5.5 tonnes

(\*\*\*) : L'Austral, Le Boréal, Le Soléal and Le Lyrial: 200 for Expedition Cruises and 244 for the other programmes; Le Ponant: 55

### **14. Travel Insurance**

14.1 The sale of the Services by CDP does not include any kind of insurance.

14.2 CDP offers optional insurance that covers Travellers against the risks of cancellation, and in the event of assistance, repatriation, damage to and loss of their luggage, and medical expenses. These optional insurance policies must be subscribed at the time when the Contract is Signed.

### **15. After-sales**

15.1 Any comment or claim relating to a trip or stay must be sent by registered letter with acknowledgement of receipt, clearly specifying the alleged incident and loss, to either Compagnie du Ponant – 408 avenue du Prado 13008 Marseille, if the Traveller signed their Contract directly with CDP, or to the travel agency that sold them the Services, within a period of one month following the date of their return, subject to the statute of limitations. CDP encourages passengers to fill in the satisfaction questionnaires delivered on board the ship at the end of the Cruise.

15.2 Once they have contacted the After-Sales Departments mentioned in Article 14.1, and failing

a satisfactory reply within a period of 60 days, the Traveller may contact the French Tourism and Travel Mediator, whose details and contact methods are available on the following website: [www.mtv.travel](http://www.mtv.travel).

15.3 Any proceedings initiated by the Traveller against CDP in its capacity as the Organiser of the Cruise, and/or the Carrier must be initiated within a period of 1 (one) year for damage to property and of 2 (two) years for bodily harm, subject to the statute of limitations as from the date when the Traveller disembarked or should have disembarked.

15.4 The statute of limitations for any proceedings against CDP in its capacity as the vendor of a Package shall expire within the timeframe specified by Articles 2224 and 2226 of the French Civil Code.

#### 16. Applicable law & Jurisdiction

16.1 This Contract is governed by French law.

16.2 Only the courts in the area of the Marseille District Court, France, have jurisdiction to hear any proceedings initiated against CDP, its employees, subsidiaries, or sub-contractors, even in the event that third parties are involved.

#### 17. Excerpt from the French Tourism Code:

The information contained in CDP's hard-copy brochures and on the company's website is the prior information provided to the Traveller and provided for by Article L. 211-9 of the French Tourism Code. However, in accordance with Article R. 211-5 of the French Tourism Code, Compagnie du Ponant expressly reserves the right to alter certain items prior to the signing of the Contract.

Excerpt from the French Tourism Code determining the conditions for performance of the activities relating to the organisation and sale of trips or stays:

**Article R. 211-3:** Subject to the exclusions provided for in the third and fourth sub-paragraphs of Article L. 211-7, any offer and sale of travel or accommodation services shall give rise to the delivery of appropriate documents that comply with the rules determined in this section.

In the event of the sale of airline travel tickets or tickets for travel on a regular shipping line, which does not include services relating to this transportation, the vendors shall deliver one or several passenger tickets for the entire trip to the purchaser, issued by the carrier or under their responsibility. In the event of on-request transportation, the name and the address of the carrier on behalf of whom the tickets are issued must be mentioned.

The separate invoicing of the various components of the same travel package shall not release the vendor from the obligations incumbent on them as a result of the regulatory provisions in this section.

**Article R. 211-3-1:** The exchange of pre-contractual information on the availability of contractual terms shall be in writing. This process may take place via e-mail under the validity and performance conditions provided for in Articles 1369-1 to 1369-11 of the French Civil Code. The vendor's name or company name and their address shall be mentioned, together with the number relating to their registration on the register provided for under Sub-Paragraph a) of Article L. 141-3, or, where applicable, their name, address and a number relating to their registration with the association or union mentioned in the second sub-paragraph of Article R. 211-2.

**Article R. 211-4:** The vendor or must disclose information on the price, dates, and the other components of the services provided at the time of the trip or the stay to the consumer prior to the signing of the contract; this information shall include:

- 1) The destination, the means, the characteristic features, and the categories of transport used;
- 2) The accommodation type, its location, its level of comfort and its main characteristic features, its accreditation and its tourism classification in accordance with the regulations or practices of the host country;
- 3) The catering services provided;
- 4) A description of the itinerary where a tour is involved;
- 5) The administrative and health formalities to be performed by French nationals or by nationals of another EU Member State, or of a State that is party to the European Economic Area Agreement, specifically in the event that the crossing of borders is involved, together with the timeframe for performing those formalities;
- 6) The tours, excursions, and other services included in the fixed-price, or that may be available in exchange for a price supplement;
- 7) The minimum or maximum size of the group that will enable the trip or stay to go ahead, as well as the cut-off date for informing the consumer in the event that the trip or stay is cancelled, if the trip or stay going ahead is dependent on a minimum number of participants; that date cannot be set at less than twenty-one days prior to the departure date;
- 8) The amount or the percentage of the price payable as an advance on signing of the contract, as well as the timetable for payment of the balance;
- 9) The terms and conditions for price reviews, as provided for by the contract, pursuant to Article R. 211-8;
- 10) The contractual cancellation terms and conditions;
- 11) The cancellation terms and conditions set out in Articles R. 211-9, R. 211-10, and R. 211-8;
- 12) The information relating to optional subscription to an insurance policy covering the consequences of certain cancellation events, or to an assistance policy covering certain specific risks, including repatriation expenses in the event of an accident or illness;
- 13) Where the contract includes air transport services, the information for each leg of the flight, as provided for in Articles R. 211-15 to R. 211-18.

**Article R. 211-5:** The prior information provided to the consumer shall commit the vendor, unless the vendor specifically has the right to alter certain aspects of that information. In that case, the vendor must clearly specify the extent of that alteration, and which aspects it covers.

In any event, any alterations made to the prior information must be disclosed to the consumer prior to the signing of the contract.

**Article R. 211-6:** The contract entered into by the vendor and the purchaser must be in writing, and drawn up in two copies, one of which shall be given to the purchaser, and signed by both parties. Where the contract is entered into via electronic means, Articles 1369-1 to 1369-11 of the French Civil Code shall apply. The contract must include the following clauses:

- 1) the name and address of the vendor, their guarantor and their insurance company, together with the name and address of the organiser;
- 2) the trip destination or destinations, and the various periods and their dates in the event of a segmented trip;
- 3) the means of transport used, and their characteristic features and categories, and the departure and return dates and locations;
- 4) the accommodation type, its location, comfort level and main characteristic features, and its tourism classification pursuant to the regulations or practices of the host country;
- 5) the catering services provided;
- 6) the itinerary where a tour is involved;
- 7) the tours, excursions or other services included in the total price of the trip or stay;
- 8) the total price of the services invoiced, together with an indication of any potential review of that invoice pursuant to the provisions of Article R. 211-8;
- 9) an indication, where necessary, of the royalties or taxes relating to certain services such as landing disembarkation or embarkation taxes at ports and airports, and hotel taxes when they are not included in the price of the service or services provided;
- 10) the timetable and procedures for payment of the price; the final payment made by the purchaser cannot be less than 30% of the price of the trip or stay, and must be made at the time when the documents enabling the trip or stay to take place are delivered;
- 11) the special terms and conditions requested by the purchaser and accepted by the vendor;

12) the procedures according to which the purchaser may lodge a claim against the vendor on the grounds of their failure to execute, or their poor execution of the contract; this claim must be made as soon as possible, via any means that enables an acknowledgement of receipt by the vendor to be obtained (fax, e-mail, or registered letter with acknowledgement of receipt), and, where applicable, mentioned in writing to the organiser of the trip and to the service provider concerned;

13) the cut-off date for informing the purchaser in the event that the trip or stay is cancelled by the vendor if the trip or stay going ahead is dependent on a minimum number of participants, in accordance with the provisions of Sub-Paragraph 7) of Article R. 211-4;

14) the contractual cancellation terms and conditions;

15) the cancellation conditions provided for in Articles R. 211-9, R. 211-10, and R. 211-11;

16) further information regarding the risks covered, and the amount of the cover provided by the insurance policy covering the consequences of the vendor's professional third-party liability;

17) information regarding the insurance policy covering the consequences of certain cancellation cases subscribed by the purchaser (policy number and name of the insurance company), together with the information regarding the assistance policy covering certain specific risks, including repatriation expenses in the event of an accident or illness; in this case, the vendor must give the purchaser a document specifying the risks covered and the risks excluded, at the very least;

18) the cut-off date for informing the vendor in the event that the purchaser transfers the contract;

19) an undertaking to provide the following information to the purchaser, at least 10 days prior to their scheduled departure date:

a) the name, address, and telephone number of the vendor's local representative, or else, the names, addresses, and telephone numbers of local organisations likely to assist the consumer in the event of a problem, or else the telephone number enabling emergency contact to be made with the vendor;

b) in the event of trips and stays abroad involving minors, a telephone number and an address that enables direct contact with the child or the person in situ responsible for their stay to be established;

20) the clause governing the cancellation and refund, free of charge, of the amounts paid by the purchaser in the event of non-compliance with the information obligation provided for in Sub-Paragraph 13) of Article R. 211-4;

21) the undertaking to inform the purchaser of the departure and arrival times in good time prior to the beginning of the trip or the state.

**Article R. 211-7:** The purchaser may transfer their contract for the trip or stay to a transferee who meets the same conditions as them, as long as the contract has not taken effect. Unless the transferor benefits from a more favourable clause, they are required to inform the vendor of their decision via any means that enables an acknowledgement of receipt to be obtained (fax, e-mail, or registered letter with acknowledgement of receipt) at least seven days prior to the beginning of the trip. This deadline shall be extended to 15 days where it involves a cruise. This transfer shall not be subject to prior authorisation by the vendor under any circumstances.

**Article R. 211-8:** Where the contract includes an express price review option, within the limits provided for in Article L. 211-12, it must mention the specific calculation procedures for the price changes, in the case of both increases and decreases, and specifically the amount of the transportation expenses and related taxes, the currency or currencies that may have an impact on the price of the trip or the stay, the portion of the price to which the change applies, and the exchange rate for the currency or currencies used as a benchmark when determining the price shown in the contract.

**Article R. 211-9:** Where the vendor finds themselves required to alter one of the key aspects of the contract prior to the purchaser's departure, such as by significantly increasing the price, and where they ignore the information obligation mentioned in Sub-Paragraph 13) of Article R. 211-4, the purchaser may take the following measures, without prejudice to any appeals for compensation for the loss that they may suffer, and once they have been informed by the vendor via any means that enables an acknowledgement of receipt to be obtained (fax, e-mail, or registered letter with acknowledgement of receipt, etc.):

- either cancel the contract and obtain immediate repayment of the amounts paid with no penalty;
- or accept the change or the substitute trip proposed by the vendor; in that case, an amendment to the contract specifying the alterations made shall then be signed by the parties; any price decrease shall be deducted from the amounts that may remain payable by the purchaser, and if the payment already made by the latter exceeds the price of the altered service, the excess amount must be returned to them prior to their departure date.

**Article R. 211-10:** In the event provided for in Article L. 211-14, where the vendor cancels the trip or the stay prior to the purchaser's departure, they must inform the purchaser via any means that enables an acknowledgement of receipt to be obtained (fax, e-mail, or registered letter with acknowledgement of receipt, etc.); the purchaser shall then obtain immediate repayment of the amounts paid from the vendor without any penalty, without prejudice to any claims for compensation for any loss that they may have suffered; in this case, the purchaser shall receive a compensation amount that is at least equal to the penalty that they would have paid if they had been responsible for the cancellation on this date.

The provisions of this article shall not prevent the reaching of an amicable agreement with a view to the purchaser accepting a replacement trip or stay offered by the vendor under any circumstances.

**Article R. 211-11:** Where the vendor finds themselves unable to provide a major portion of the services provided for in the agreement, and which account for a significant percentage of the price paid by the purchaser after the latter's departure, the vendor must immediately take the following measures, without prejudice to the claims for compensation for any losses that may have been suffered:

- either offer services as a replacement for the services provided for, and potentially bear any additional cost, and, if the services accepted by the purchaser are of a lower quality, the vendor must refund the price difference to them as soon as they return;
- or, if they cannot offer any replacement service, or if that service is refused by the purchaser on valid grounds, provide the purchaser with transportation tickets enabling them to return to their place of departure under conditions that may be considered as equivalent, or to another place agreed by both parties, at no additional cost.

The provisions of this article shall apply in the event of non-compliance with the obligation provided for in Sub-Paragraph 13) of Article R. 211-4.

**Article R. 211-12:** The provisions of Articles R. 211-3 to R. 211-11 must be included in the brochures and the travel contracts offered by the persons mentioned in Article L. 211-1.

**Article R. 211-13:** The purchaser can no longer claim the benefit of the clause provided for under Sub-Paragraph 20 of Article R. 211-61 once the service has been provided.



La Compagnie du Ponant sign The Travel Charter and adheres to « la charte bleue » d'Armateurs de France.

## GENERAL IMPORTANT INFORMATION

---

### **1 - The rates of our cruises are per person and include the following:**

- All meals while on board the ship (from dinner on the day of embarkation to breakfast on the day of disembarkation)
- Captain's welcome cocktail and gala dinner
- "Open Bar" (pouring wines, house champagne, alcohol except premium brands...list available upon request)
- Evening entertainment and events
- Room service 24h (special selection)
- English speaking lecturer on selected sailings identified by "lecturer on board" logo
- English speaking golf escort on selected sailings identified by "golf cruise" logo
- English speaking dive master on selected sailings identified by "diver on board" logo
- Water sports activities (except scuba diving) using the ship's equipment, when permitted by local authorities and confirmed by ship Master according to safety and sea conditions onsite
- Highly experienced bilingual (French-English) Expedition team for all cruises identified with "Expedition" logo.
- Parc entry fees into protected areas

### **1.1 Our "Cruise, Flights & Transfers" program rates are per person and also include:**

- "Cruise, Flights & Transfers" Program for expedition voyage **Ushuaia-Valparaíso**:
  - one-way flight Buenos-Aires/Ushuaia
  - Meet and Greet by our representatives in Ushuaia and luggage direct transfer from the airport to the ship for port clearance
  - Choice between one full day in Arakur Resort located inside Cerro Alarken natural Reserve, time at leisure, lunch and / or optional excursion to Tierra del Fuego National Park OR direct transfer to the port for embarkation, buffet lunch and access to the Main Lounge (cabins/suites will not be accessible before 5pm)
- "Cruise, Flight & Transfer" Program for expedition voyage **Valparaíso -Ushuaia**: direct coach transfer to airport and one-way flight Ushuaia/Buenos-Aires

### **2- The rates of our cruises don't include:**

- Any ground services before and/or after the cruise other than the ones mentioned in each "Cruise, Flights & Transfers" package and for which details are available upon request. Don't hesitate to contact your travel agent or consult [www.ponant.com](http://www.ponant.com)
- Pre or post cruise programs, overland programs or shore excursions mentioned in the cruise brochure and detailed on [www.ponant.com](http://www.ponant.com)
- Airport taxes (other than the ones included)
- Port and safety taxes
- Visa expenses and/or immigration reciprocity taxes if applicable
- Luggage handling
- Gratuities to onboard crew, local guides and drivers
- Optional Spa package to be booked prior to your departure
- Dives when authorized by local authorities and feasible with ship equipment and zodiacs. Rates: 70 € per standard dive; 80€ per dive when local equipment or staff must be used, 80€ for a "discover scuba dive" course. In order to participate to diving sessions, guests must have with them a medical certificate less than 1 year old and their up to date dive book.
- Beverages other than the ones mentioned
- Laundry services, hair salon and à la carte Spa treatments
- Personal expenses, on board medical consultations and drug prescriptions
- Cancellation/luggage/assistance/repatriation/medical insurance(s)

### **3-Ground services**

#### **3.1 Services included in "Cruise, flights and Transfers packages:**

Packages "Cruise, Flights and Transfers" include ground services before and/or after the cruise as described in documents available 12 months prior departure of each cruise and available on [www.ponant.com](http://www.ponant.com). Services to the port of departure, transfers to the ship, including, as applicable, hotel room and restaurant bookings or guided tours, are performed by independent suppliers who are not employees of Compagnie du Ponant. In this respect, Compagnie du Ponant acts only as an agent and shall not be held liable for said services or for the acts or omissions of sub-contractors or other contractors. The passenger agrees that Compagnie du Ponant acts as agent and/or trustee for any person including ground and maritime agents and subcontractors, who provide any service forming, or in connection with, any part of the cruise.

Our Cruise and Flights package programs are made in connection with Compagnie du Ponant selected regular or private charter flights. Final timings and schedule of the day by day program will be communicated with the cruise ticket. All our programs are made in economy class and according to number of seats available. If the class is not available anymore, we will suggest, depending on the availability, extra seats with a supplement.

On International flights, check-in luggage is limited to 23kg/50lbs and 8kg/17lbs per person for carry-on luggage (besides airlines frequent flyer advantages). On regular domestic flights check-in luggage limits are between 15 and 20 kg/33 to 44lbs and 5 to 8kg/11lbs per person for carry-on. On Compagnie du Ponant private charter flights, check-in luggage is limited to 23 kg/50lbs and 5kg/11lbs maximum per person as carry-on. We thank you for taking these restrictions into account. Airline carriers charge for extra weight and sometimes refuse, for strict security reasons, to check-in overweight and oversized luggage. Compagnie du Ponant and the airline carriers waive all liability for luggage with extra weight that is refused at the check-in.

#### **3-2 Pre and post-cruise programs and pre bookable tours:**

Pre and Post-cruise programs (as detailed on [www.ponant.com](http://www.ponant.com)), pre bookable tours and shore excursions are performed by independent suppliers who are not employees of Compagnie du Ponant. In this respect, Compagnie du Ponant acts only as an agent and shall not be held liable for said services or for the acts or omissions of sub-contractors or other contractors. The passenger agrees that Compagnie du Ponant acts as agent and/or trustee for any person including ground and maritime agents and subcontractors, who provide any service forming, or in connection with, any part of the cruise.

Hotel accommodations are based on 4 and 5-star rated hotels. Official check-in time is 4pm, check-out time is 11am unless early check-in or late check-out supplement are paid.

### **3.3 Shore excursions**

Unless otherwise noted, shore excursions are sold and charged on board and are ruled by general conditions that apply to the contract signed with the local tour operator and the relevant national regulations. The passenger agrees that CDP acts as agent and/or trustee for any person including ground and maritime agents and subcontractors, who provide any service in connection with any part of the cruise.

Excursions can involve activities that may not suit persons with disabilities. Prices are only given as an indication and may change. Before departure, you will receive a tour program detailing the excursions on offer with the latest rates. Five months before cruise departure, shore excursions can also be viewed on [www.ponant.com](http://www.ponant.com). Shore excursions are currently only bookable onboard. In the event of an excursion being cancelled due to a technical reason, shortage of participants or a case of force majeure, the client will not be eligible for any compensation. Please note that you will not be reimbursed for excursions if you cancel after registration. Any meals offered during excursions are simple and should not be compared to the standards on board the ship.



# INSURANCE



## FOR YOUR SAFETY AND YOUR COMFORT, SUBSCRIBE TO AN EXCLUSIVE PONANT INSURANCE POLICY

The guarantees available are subject to a premium of 4% of the total cost of your cruise for an amount up to 25,000 euros per person, or a premium of 5.5% of the total cost of your cruise for an amount of between 25,001 and 50,000 euros. The Ponant Insurance Contract offers more extensive guarantees than those you already have or believe you have. It is perfectly adapted to the characteristics of your trip.

### **CRUISE CANCELLATION INSURANCE**

- Cancellation for "All justified reasons"
- Cancellation because of a natural disaster or terrorist attack at the destination
- Cancellation as a result of a strike by the airline that should take you to your cruise

### **"MISSED THE SHIP" INSURANCE**

- To allow you to join the ship at the next port of call or for an early return

### **LUGGAGE INSURANCE**

- Up to €3,000 per person
- If your luggage arrives late, you will have €400 to buy emergency supplies

### **MEDICAL ASSISTANCE AND REPATRIATION**

- Medical costs in Europe and the Mediterranean Basin €75,000
- Medical costs in the rest of the world €150,000

### **REIMBURSEMENT OF UNUSED SERVICES**

- Should you have to return home early, up to €50,000

### **COMPENSATION CRUISE**

- Following medical repatriation, up to €25,000

### **PASSENGER CIVIL LIABILITY INSURANCE**

- Physical injury up to €4,600 000
- Material and immaterial damage up to €46,000

### **"UNABLE TO GET HOME" INSURANCE**

- €150 per person from the second night (maximum 6 days)

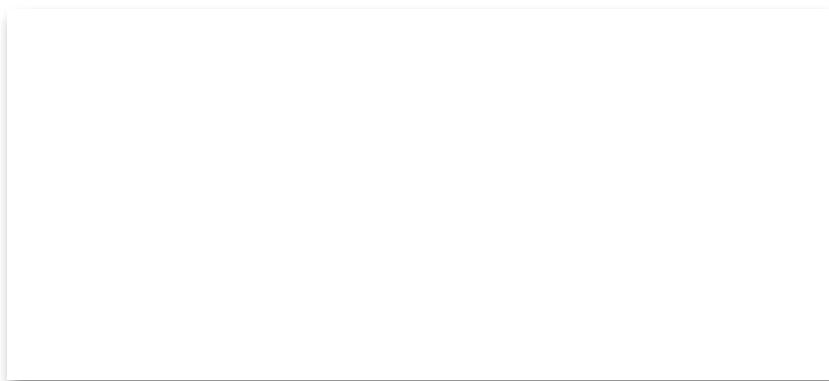
### **PRICE GUARANTEE** Up to €150 per person

- In the event of an increase in port or airport taxes
- In the event of currency fluctuation
- In the event of a fuel surcharge

If the insured lives in a country other than one of the member countries of the European Union, the Overseas Departments and Regions, Overseas Collectivities and inhabited sui generis collectivities, Monaco, and Switzerland, **The Company** may, at the insured's request, repatriate him/her to his/her home or to the Hospital that is closest, best equipped or most specialised. In this case the insured undertakes to pay **The Company** the difference between the cost of his/her repatriation and a repatriation carried out in the same circumstances in Metropolitan France.

This information is an extract of the full guarantees and is not legally binding.

As with all insurance policies, this contract includes excesses, limits, and duties in the event of an incident. Contract details are available in full from Ponant on request.



FOLLOW US ON THE SOCIAL NETWORKS



facebook.com/ponant



Instagram : #ponantcruises



Pinterest : #ponantcruises



Youtube : PonantCroisieres



408 Avenue du Prado - 13008 Marseille - France

[www.ponant.com](http://www.ponant.com)

Licence 013060005 - Member of SNAV and the APS