

ASIA & PACIFIC COLLECTION

WINTER CRUISES 2016 - 2017



PONANT

YACHT CRUISES & EXPEDITIONS



THE

Scents of Asia and pearls of the Pacific

Mysterious, authentic, captivating and cheerful... Asia will reveal to you all of its facets, from the traditional to the modern, from its futuristic architecture to its age-old temples, while the Pacific islands, suspended between the sky and the sea, will show you their most stunning treasures.

For this new season, PONANT has designed fantastic travel experiences for you, with unique ports of call and enhanced land-based programmes. Our itineraries, cruise-tours and excursions provide a wonderful overview of history and culture, including legendary and emblematic sites, many of which are listed as UNESCO World Heritage Sites.

Aboard *L'Austral*, set off to discover Japan, a delightful blend of modernity and imperial influences, or choose to visit the fragrant trading posts and dynastic cities of Vietnam. Your ship will then take you to the shores of Indonesia before reaching the coast of New Zealand, an insular realm with an infinite variety of landscapes.

If you opt for Polynesia's atolls, you will sail aboard *LE SOLÉAL* to discover islands with magical names such as Bora Bora, Tahiti and the Marquesas, archipelagos where the trade winds gently blow, infusing the islands with the sweet scent of Tahitian flowers.

We invite you to discover these magnificent itineraries for yourself. Admiring the photos is in itself the beginning of a journey.

See you on board very soon.







SUMMARY

YOUR CRUISES.....	6
WHY SAIL WITH PONANT?	8
THE MUST-SEE SITES IN ASIA.....	10
THE MUST-SEE SITES IN POLYNESIA AND IN THE PACIFIC.....	12
ITINERARIES	16
SHORE EXCURSIONS HIGHLIGHTS.....	48
L'AUSTRAL & LE SOLÉAL.....	52
STATEROOMS & DECKS.....	54
PRICE LIST	56
FORMALITIES.....	60
GENERAL IMPORTANT INFORMATION.....	62
INSURANCE.....	66



YOUR CRUISES IN ASIA

DATE	SHIP	ITINERARY	NIGHTS	PAGE
Oct. 05 th 2016	L'AUSTRAL	KANAZAWA • OSAKA	9	JAPAN'S TRADITIONS.....p22
Oct. 14 th 2016	L'AUSTRAL	OSAKA • HONG KONG	12	FROM JAPANESE COASTS TO HONG KONGp24
Oct. 26 th 2016	L'AUSTRAL	HONG KONG • HO CHI MINH	9	VIETNAMESE COASTLINESp26
Nov. 04 th 2016	L'AUSTRAL	HO CHI MINH • HONG KONG	9	VIETNAMESE COASTLINESp26
Nov. 13 th 2016	L'AUSTRAL	HONG KONG • HO CHI MINH	9	VIETNAMESE COASTLINESp26
Nov. 22 th 2016	L'AUSTRAL	HO CHI MINH • BALI	10	VIETNAMESE MYSTERIES & INDONESIAN TREASURESp28
Mar. 01 st 2017	L'AUSTRAL	PORT VILA • KOTA KINABALU	17	BETWEEN PAPUA & INDONESIAp42
Mar. 18 th 2017	L'AUSTRAL	KOTA KINABALU • OSAKA	14	FROM PHILIPPINES TO JAPANESE COASTS.....p44
Apr. 01 st 2017	L'AUSTRAL	OSAKA • MAIZURU	8	THE BEST OF JAPAN.....p46
Apr. 09 th 2017	L'AUSTRAL	MAIZURU • OSAKA	8	THE BEST OF JAPAN.....p46
Apr. 17 th 2017	L'AUSTRAL	OSAKA • MAIZURU	8	THE BEST OF JAPAN.....p46
Apr. 25 th 2017	L'AUSTRAL	MAIZURU • OSAKA	8	THE BEST OF JAPAN.....p46



YOUR CRUISES IN POLYNESIA AND THE PACIFIC

DATE	SHIP	ITINERARY	NIGHTS	PAGE
Sep. 12 th 2016	LE SOLÉAL	HONOLULU • PAPEETE	14	HAWAII & FRENCH POLYNESIAp16
Sep. 26 th 2016	LE SOLÉAL	PAPEETE • PAPEETE	10	TREASURES OF POLYNESIAp18
Oct. 06 th 2016	LE SOLÉAL	PAPEETE • HANGA ROA	13	POLYNESIA & EASTER ISLANDp20
Dec. 02 nd 2016	L'AUSTRAL	BALI • CAIRNS	14	FROM INDONESIA TO AUSTRALIAp30
Dec. 16 th 2016	L'AUSTRAL	CAIRNS • PORT VILA	12	PAPUA NEW GUINEA & SALOMON ISLANDS.....p32
Dec. 28 th 2016	L'AUSTRAL	PORT VILA • AKAROA	10	TREASURES OF THE PACIFICp34
Jan. 07 th 2017	L'AUSTRAL	AKAROA • MILFORD SOUND	15	NEW ZEALAND & SUBANTARCTIC ISLANDSp36
Jan. 22 th 2017	L'AUSTRAL	MILFORD SOUND • AUCKLAND	9	THE BEST OF NEW ZEALANDp38
Jan. 31 st 2017	L'AUSTRAL	AUCKLAND • MILFORD SOUND	9	THE BEST OF NEW ZEALANDp38
Feb. 09 th 2017	L'AUSTRAL	MILFORD SOUND • AUCKLAND	9	THE BEST OF NEW ZEALANDp38
Feb. 18 th 2017	L'AUSTRAL	AUCKLAND • PORT VILA	11	BETWEEN NEW CALEDONIA & VANUATU.....p40

CHRISTMAS
CRUISE

NEW YEAR'S
CRUISE

WHY TRAVEL WITH PONANT ?

Is your dream to travel differently, moving from destination to destination and country to country without having to pack and unpack your suitcase each time? PONANT is giving you the opportunity to travel to centuries-old Asia or to discover the islands of the Pacific.

And because cruising doesn't mean just seeing the coastline and brushing against the shores of a distant land, we are offering you a different perspective thanks to our programme of shore excursions that are rich in culture and sensations. Our carefully selected ports of call and extensions will have you visiting the must-see sites of these faraway lands.

As a privileged passenger, whichever itinerary you choose, set sail aboard *L'Austral* or *Le Soléal* and discover the major sites of this vast continent of new empires and ancient kingdoms, the heirs to ancestral cultures.



"PONANT" STYLE IN THE HEART OF ASIA

- **9** cruises that cross **7** countries in Asia.
- **8 stops** at UNESCO World Heritage Sites.
- Discovery of an authentic culture, of an Asian continent with a thousand faces.
- For many of the destinations, **back-to-back cruise options** are available (please contact us).
- "Clean ship" certified ships that are respectful of the environment in the heart of Asia's islands, nature reserves and archipelagos.
- 5* yachting cruises aboard ultra-modern ships combining elegance, luxury and cutting-edge technology.
- On all cruises, a team of lecturers selected for their areas of expertise.



"PONANT" STYLE IN THE HEART OF PACIFIC

- **8** cruises that cross numerous archipelagos.
- **7 stops** at UNESCO World Heritage Sites.
- "Expedition" cruises for certain destinations.
- Zodiac® outings and shore visits to get as close as possible to nature.
- Possibility of snorkelling in the heart of lagoons on certain cruises.
- For many of the destinations, **back-to-back cruise options** are available (please contact us).
- "Clean ship" certified ships that are respectful of the environment in the heart of Pacific's islands, nature reserves and archipelagos.
- 5* yachting cruises aboard ultra-modern ships combining elegance, luxury and cutting-edge technology.
- On all cruises, a team of lecturers and/or naturalists selected for their areas of expertise.

Accédez par la Mer aux Trésors de la Terre...



THE MUST-SEE SITES IN ASIA

As a privileged passenger on *L'Austral*, we invite you to discover the principle sites of Asia on our cruise-tours. The ports of call, pre and post-cruise programs and the mid-cruise extensions will give you access to all the best-kept secrets of this distant and mysterious land.



UNESCO

MOUNT FUJI in Japan

The symbol of Japan of incomparable beauty, Mount Fuji dominates the region to the west of Tokyo. A UNESCO World Heritage Site, it is the highest peak in the country, its almost perfect conical shape permanently snow-topped and soaring to some 3,776 metres in altitude. It has become a sacred site, hiding place of the Shinto deities who reign over the visible and invisible worlds. During your port of call, the mysterious valley of Owakudani will reveal sublime vistas over the mountain, bordered to the North by five Fujigoko lakes and crowned by a crater of around 500 m in diameter. Although Mount Fuji is the crown jewel of this region, other gems sparkle in the area, all part of the Fuji-Hakone-Izu National Park, one of the country's natural highlights.

From Shimizu & Tokyo ; Kanazawa • Osaka, page 22

UNESCO

XIAN & THE TERRACOTTA WARRIORS from Shanghai

Nestled in the heart of the Yangtze Delta and bathed, the largest city of the "Middle Kingdom" is both modern and rich in ancestral customs. On the banks of the Huangpu River, the cosmopolitan and extroverted Shanghai combines winding streets with traditional homes with skyscrapers in the futuristic district of Pudong. It is from this port of call in Shanghai that we invite you to discover Xian and the legendary Terracotta Army with their timeless expressions. It is estimated that the three graves contained more than 7,000 figures, 600 horses and 130 chariots, all of them guard Quishihuandi's tombstone, first emperor of reunited China. These actual size figures are masterpieces of realism and also of great historical interest. Xian and the legendary clay soldiers are listed as a UNESCO World Heritage Site and was one of the greatest archaeological discoveries of the last century.

Osaka • Hong Kong in Overland, page 24



UNESCO

THE IMPERIAL CITY OF HUE in Vietnam

A picturesque city when the weather is fine, Hue is shrouded in mystery on less glorious days. The former imperial capital of Vietnam, built on the initiative of the founder of the Nguyen dynasty, this small city has a very particular character whose charm is conferred through the elegant poetry of its writings and the intellectual agility of its inhabitants. During your visit, do not miss the chance to visit the Imperial City, nestled within the walls of the Citadel and opposite the imposing Flag Tower, or the Thien Mu Pagoda, built on the hill overlooking the peaceful flow of the river. The collection of palaces, homes and royal tombs make Hue a calm and romantic small city, one that will leave you with a feeling of gentle melancholy.

From Chan May ; Hong Kong • Ho Chi Minh & Ho Chi Minh • Hong Kong, page 26





UNESCO

KYOTO in Japan

Capital of Japan from 794 until the Meiji Restoration in 1868, this city basks in a mellow atmosphere, lulled by the tranquil flow of the Kamo River. Now the sixth largest city in Japan, Kyoto is home to a history that dates back more than 1,000 years and has earned it the title of the *"true spiritual capital of the Japanese archipelago"*. With its wonderful sanctuaries, monuments and historical districts, gardens and natural sites, forested hills and more than 1,800 temples, Kyoto has everything a traveller likes. For more than a thousand years, the emperors lived in this city where the cult of beauty and tradition are still flourishing. Geishas, with their immaculate white faces and mouths painted like two bright red petals, represent a living work of art and have inspired the greatest directors and authors. A symbol and icon of femininity, they are also *"female artists"* whose culture and know-how goes back more than a thousand years.

From Maizuru in pre-post Cruise ; Osaka • Maizuru & Maizuru • Osaka, page 46



BALI in Indonesia

It would be tempting to ban visits to Bali just so that we can keep it a secret for ourselves. The *"Island of Gods"* is a constant source of charm and timeless beauty. Located at the Western tip of the Sunda Islands, between Java and Lombok, it is renowned for its artistic development in areas as varied as classical dance, sculpture, painting, leather and metal working. Bali is superb beaches, imposing volcanic hillsides covered with forest, terraced paddy fields that make the light dance, a lively and authentic culture and a remarkably friendly population. The Balinese have lost nothing of their charm or customs; we find the daily ritual of offerings in front of every store, on every bridge, at the entrance to paddy fields or in altars that adorn gardens. We should visit it, but visit it well, in order to protect the treasure that it represents.

In pre - post Cruise, Ho Chi Minh • Bali & Bali • Cairns pages 28 & 30



UNESCO

HA LONG BAY in Vietnam

Words are inadequate to describe the natural marvel of Ha Long Bay. Listed as a UNESCO World Heritage Site in 1994, its name means *"Bay of the descending dragon"*. Whether cones, rocky needles, pitons or hills, all of these limestone forms are the result of the combined actions of wind and waves. The 2,000 islands emerging from the jade waters offer a surreal and magical vision. In these strangely shaped hills that seem to float on the surface of the water, the silence of the sea is total, only broken by the cry of a seabird. In the 18th century, these coastlines and their many caves were the ideal location for Chinese and Vietnamese pirates. In this spectacular marine landscape of limestone pillars, untouched by human hand, you will see ancient karst caves formed at the foot of the cliffs. Discovering one of the most beautiful maritime sites in Vietnam is an unmissable and unforgettable event.

Hong Kong • Ho Chi Minh & Ho Chi Minh • Hong Kong, page 26

THE MUST-SEE SITES IN POLYNESIA AND IN THE PACIFIC

As a privileged passenger on *L'Austral* and *LE SOLÉAL*, we invite you to discover the atolls of Polynesia and the wonders of the Pacific on our cruise-tours. The ports of call, pre and post-cruise programs and the mid-cruise extensions will give you access to the most secret sites of these faraway lands.



THE POLYNESIAN ATOLLS

Fertile lands drenched in sunlight, wonderful otherworldly landscapes, a burst of a thousand tropical colours, discover the Polynesian atolls, true natural masterpieces in the Pacific. These 85 minuscule strips of land sitting on the surface of the water represent 775 km² of land mass scattered around the Ocean. Mainly composed of coral reefs, these rings of land are dotted with several coral sand islets (motus) and decorated with immaculate beaches shaded by coconut trees, surrounding a turquoise lagoon which is home to an incredibly rich marine life. You will be dazzled by these natural aquariums, these faraway gems containing unsuspected underwater worlds.

Honolulu • Papeete & Papeete • Papeete, pages 16 & 18

THE UNDERWATER WORLD in Polynesia

When we talk about the landscapes of Polynesia, the first image that comes to a traveller's mind is that of desert islands surrounded by beaches and turquoise Ocean. But this does not take into account the treasures to be found in the depths of its waters, which are like a giant aquarium. Discovering the underwater plant and marine life is a must on any trip to Polynesia. Equipped with your snorkel and mask, swim in the jade lagoons of the Tuamotu Islands and observe the countless species of fish with their delicate forms and multicolored markings. Among the lacy coral fronds, come and admire the schools of damselfish, red mullets and long spine squirrelfish, or the small clown fish, cautiously peeking out from anemone to greet the sea turtles and majestic manta rays gliding smoothly over the glittering sea bed.

Honolulu • Papeete & Papeete • Papeete, pages 16 & 18



UNESCO

EASTER ISLAND

Halfway between Chile and Tahiti, Easter Island, also known as Rapa Nui, is a mysterious and fascinating land considered to be the most isolated in the world. Steeped in an almost mystical, timeless aura, the vestiges of Easter Island's civilizations can be found within the safe confines of Rapa Nui National Park, listed as a UNESCO World Heritage Site. During your cruise, do not miss the stop on this mythical island with black lava cliffs against which crashes the clearest water in the world, to discover its Moai, monumental statues which turn their backs to the sea and face the settlements as a sign of protection. Many questions remain unanswered to this day, including "Why were they sculpted?" and "How were they transported?". Despite recent discoveries, the island we call "navel of the world" jealously guards its secrets and remains a legendary destination for travellers.

From Hanga Roa ; Papeete • Hanga Roa, page 20



MEET TRADITIONAL TRIBES

A cruise to the Pacific is a chance to take in spectacular landscapes you will not find anywhere else. But it is also the occasion for discovering the ancient rituals of people living on the land of their ancestor. In Australia, New Zealand or Papua New Guinea, your cruise aboard *L'Austral* will take you far from the busiest tourist routes to meet these people from the other side of the world. Famous for their primitive ways and their ancestral customs, these ancient Papuan, Aboriginal and Maori tribes all have different rites and traditions, and their geographical positioning and distribution across these many islands all differ too. You will be both surprised and moved by the cheerfulness and open-mindedness of these locals who will welcome you with traditional dancing, singing and laughter. You will also discover some examples of local traditional art: woven baskets or carved objects.



UNESCO

MILFORD SOUND in New Zealand

Romantic lakes, majestic glaciers, sulphur geysers, white sand beaches, and the Maori culture, as New Zealand's twin islands offer visitors the unique beauty of its national parks and its unfathomable fjords. Located at the Southern end of this *"Land of the Long White Cloud"*, off the crystal-clear waters of the Tasman Sea, the Milford Sound is an ancient glacial valley of remarkable pristine beauty. With its landscapes of rugged rocks, mirror lakes and virgin forests, the British author Rudyard Kipling described it as *"the eighth wonder of the world"*. The Milford Sound is also home to a surprising variety of wildlife: penguin and seal colonies soaking up the sun on the surrounding shorelines, dolphins and whales playing on the water's surface. When *L'Austral* stops here, do not miss your chance to discover this Southern Hemisphere paradise where numerous scenes from the famous *"Lord of the Rings"* trilogy were filmed.

Akaroa • Milford Sound & Auckland • Milford Sound, pages 36 & 38

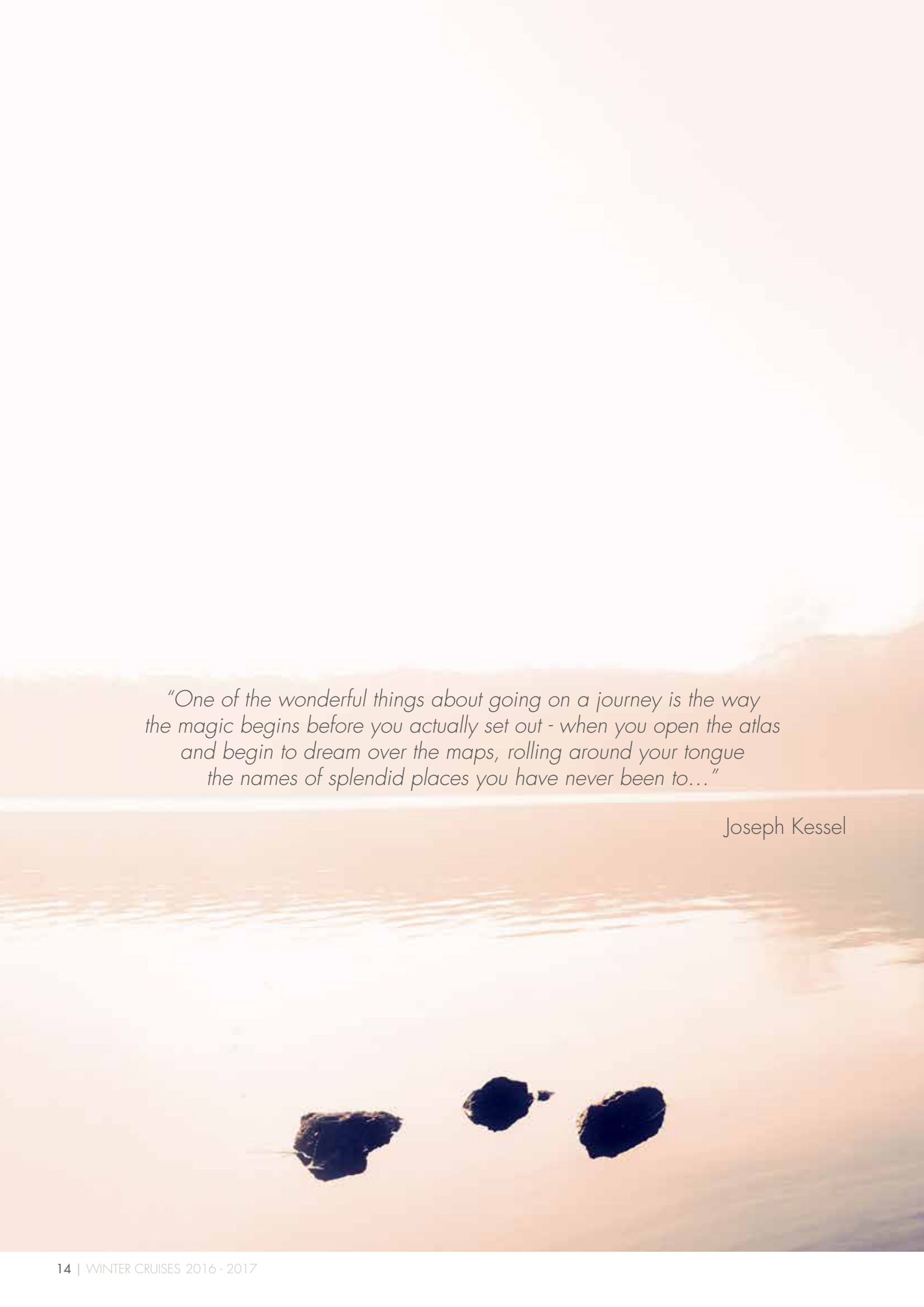


UNESCO

SUB ANTARCTIC ISLANDS

Fjords, black sandy beaches or imposing cliffs.... The Sub Antarctic Islands, or the Galápagos of the Southern Ocean, will hold no secrets for you! Composed of five small archipelagos and situated in the Southern Ocean between the Antarctic and Subtropical Convergences, New Zealand's Sub Antarctic Islands will reveal their strange, primitive beauty to you. Most of these islands, which are also nicknamed *"the Galápagos of the Southern Ocean"*, are volcanic and are known for the surprisingly rich biodiversity which has earned them their place as UNESCO World Heritage Sites. As they are less mountainous and, more importantly, less iced over than South Georgia or the Falkland Islands, it is easier to explore them through hiking. Cruising aboard *L'Austral*, discover their exuberant fauna composed of species that are often endemic, such as the yellow-eyed penguin, which is the rarest of its species.

Akaroa • Milford Sound, page 36

A full-page background image showing a calm body of water under a vast, hazy sky during a golden hour. The sun is low on the horizon, creating a warm, orange glow. In the foreground, three dark, jagged rocks are visible in the water.

"One of the wonderful things about going on a journey is the way the magic begins before you actually set out - when you open the atlas and begin to dream over the maps, rolling around your tongue the names of splendid places you have never been to..."

Joseph Kessel



HAWAII & FRENCH POLYNESIA

From Honolulu, the capital of the Hawaiian Islands, sail aboard LE SOLÉAL to discover the Marquesas Islands, those stunning jewels lost in the vast expanses of the Pacific. French Polynesia will reveal its mysteries, from pearl farms to white sand beaches and precious coral reefs that are home to a remarkable and rich marine life.



UNESCO

HAWAII

Discover Honolulu, capital of the Hawaiian Islands, which will reveal the Waikiki coast to you with its beaches that are famous throughout the world. Under the benevolent gaze of the Diamond Head crater, discover lush vegetation in the heart of the tropical rainforests, interspersed with waterfalls and sumptuous gardens of orchids. Before the emerald landscape of Hilo, undoubtedly one of the finest illustrations of the islands' volcanic heritage, *LE SOLÉAL* will call at Lahaina, the jewel of Maui Island. Visit the Volcanoes National Park, the only site in Hawaii currently listed as a UNESCO World Heritage Site and admire the lava fields and tubes, as you get as close as possible to the majestic and still-active cones.

HONOLULU • PAPEETE

Aboard LE SOLÉAL

From September 12th to 26th 2016 (14 nights)

From 3 200 €

See price list page 58.

HIGHLIGHTS

- **UNESCO sites:** From Hilo, Volcanoes National Park ; Biosphere Reserve of Fakarava in the Tuamotu Archipelago.
- Visit exceptional ports of call in the heart of the Marquesas Islands, whose volcanic landscapes are home to turquoise lagoons, secluded bays and abundant wildlife.
- Beach, swim and snorkelling in the crystal-clear waters of French Polynesia, from Tuamotu to Tahiti.
- Lecturer on board, specialist in French Polynesia.



THE MARQUESAS ISLANDS

Grandiose, striking and powerful are just some of the words that spring to mind when you catch sight of the imposing cliffs of the Marquesas Islands and glide along the jagged coastlines that plunge into the vast Pacific Ocean. Here, you will find neither lagoons nor reefs. The archipelago's charm lies in its wild beauty and each island of "*the Land of Men*" is more majestic than the next. At the heart of the dense and luxuriant forests of Nuku Hiva, droplets from the waterfalls dive off the vertiginous cliffs. As for the islands of Hiva Oa and Fatu Hiva, they still hide mysterious petroglyphs, many thousands of years old, as well as the remains of "*marae*" - temples with a religious and political purpose. Reputed for their arts and crafts, which are unrivalled in Polynesia, Marquesas Islanders sculpt wood, stone or bone to produce statues, small ornaments and jewelry.



TUAMOTU - FAKARAVA

The Tuamotu, an archipelago of 76 atolls in the Pacific Ocean, have everything of an earthly paradise: coral crowns lined with white sand and coconut trees, surrounding lagoons of crystal-clear water. In the heart of this palette of bright colours, an exceptionally rich and diverse marine life makes these islands one of the world's most stunning destinations for snorkelling. They are also the birthplace of the legendary Tahitian pearl, cultivated with patience and respect in this expanse of blue. At the heart of this myriad of idyllic islands, take the time to enjoy the magnificent Fakarava atoll and its dizzying decor. Its pristine environment is so unique that UNESCO listed it as a Biosphere Reserve in 2006. During a stay in Fakarava, the famous artist Henri Matisse was dazzled by the infinite variety of shades of blue in the lagoon. This discovery had such a profound impact that it triggered a new creative phase for him.



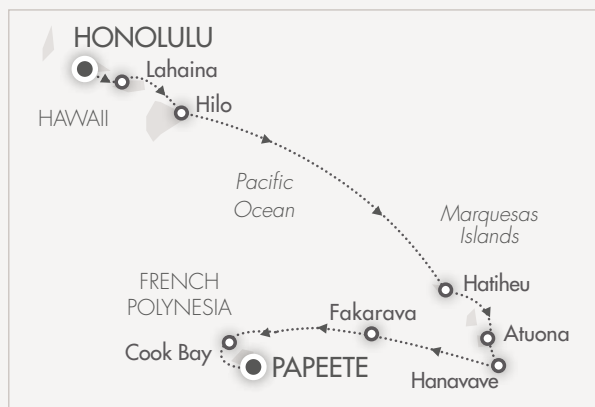
MOOREA

Lush, emerald vegetation contrasting with the limpid turquoise of the ocean, charming wooden bungalows scattered along pristine beaches...the beauty of Moorea is sumptuous, unchanged since James Cook discovered the island in 1769. Edged with coral, this small island, part of the Society Islands chain, is renowned for its natural gardens of tropical flowers as well as for its pineapple plantations. Wander along the two bays that slice through the coral island, or head off to explore the Belvedere, which will offer you a breathtaking view over the majestic volcanic peaks of the island, such as Mount Rotui. Unless you would rather encounter the many dolphins and rays that swim gracefully in the lagoon. Total relaxation in the middle of a paradise lost, fragranced with tiare flowers.



HONOLULU • PAPEETE

LE SOLÉAL - From September 12th to 26th 2016
15 days / 14 nights



DAY ITINERARY

- | | |
|------|---|
| D 1 | Honolulu (Hawaii - USA)
Embarkation from 16.00 to 17.00 |
| D 2 | Lahaina (Hawaii - USA) |
| D 3 | Hilo (Hawaii - USA) |
| D 4 | At sea |
| D 5 | At sea |
| D 6 | At sea |
| D 7 | At sea |
| D 8 | At sea |
| D 9 | Hatiheu (Nuku Hiva, Marquesas Islands) |
| D 10 | Atuona (Hiva Oa, Marquesas Islands) |
| D 11 | Hanavave (Fatu Hiva, Marquesas Islands) |
| D 12 | At sea |
| D 13 | Fakarava (Tuamotu, French Polynesia) |
| D 14 | Cook Bay (Moorea, French Polynesia) |
| D 15 | Papeete (Tahiti, French Polynesia). Disembarkation. |

YOUR PRE CRUISE (from Honolulu)

- From the Hawaiian monarchs to the battles of the 20th Century (2 days/ 2 nights)

Price per person: **please consult us.**

YOUR POST CRUISE (from Papeete)

- Visit and relaxation in Papeete (1 day)

Price per person: **please consult us.**

For more information on detailed descriptions of your programs and prices, please consult www.ponant.com or call our travel agents.

TREASURES OF POLYNESIA

The islands of Polynesia emerged from the water millions of years ago, as a result of violent volcanic eruptions. This outburst of nature created one of the most stunning destinations in the world, on the edge of reality. Aboard LE SOLÉAL, join us for a 100% Polynesian cruise to discover these unspoiled islands, their idyllic landscapes and their traditional tribes.



FRENCH POLYNESIA

From James Cook to Paul Gauguin, French Polynesia has been captivating generations of explorers, writers and painters. Scattered around the Southern seas, the 118 islands of this tropical Eden have never stopped inspiring people to dream. Here, the tall islands crowned with jagged peaks tower majestically over the opalescent lagoons dotted with "motus" (coral islets), whereas the islands unfurl their long and scintillating white-sand beaches lined with a multitude of coconut trees laden with fruit. Farther on, the atolls form on the horizon and offer travellers extraordinary panoramas with a symphony of blue colors.



RAIATEA & MAUPITI

With its sumptuous landscapes, Raiatea is without a doubt one of the most stunning islands in the Pacific. Considered to be "the birthplace of Polynesian culture", it is home to numerous archaeological treasures that provide further evidence of a rich history and culture which are still very present. When LE SOLÉAL drops anchor here, come and discover this island of many legends. Farther on, you will also discover the small, wild and authentic island of Maupiti. Located to the west of Bora Bora, it boasts magnificent landscapes of vast fine-sand beaches and legendary rocky outcrops, existing alongside its gorgeous lagoon and offering a number of activities, whether you prefer adventure or relaxation.



PAPEETE • PAPEETE

Aboard LE SOLÉAL

From Sept. 26th to Oct. 06th 2016 (10 nights)

From 2 520 €

See price list page 58.

HIGHLIGHTS

- Set sail for a cruise 100% Polynesia and discover islands regarded as the most beautiful in the world.
- From Rangiroa, visit a pearl farm and discover the extraordinary black pearl industry.
- From Huahine, go on a cultural hike through the village of Maeva to discover the sacred sites.
- Take a scenic helicopter flight over Bora Bora, the "Pearl of the Pacific", considered to be the most beautiful lagoon in the world (optional).
- Enjoy white sand beaches and snorkelling in the calm, clear waters of the Society Islands.
- A Lecturer with a passion for Polynesian culture will be on board.

BORA BORA

Surrounded by “*motus*” like a pearl necklace, the lagoon of Bora Bora, its aquamarine waters contrasting with the cobalt blue of the Ocean, is renowned for being unique in the world. “*Nowhere else on earth*” wrote Paul-Émile Victor when describing this idyllic atoll. “*Bora Bora*” means “*first born*” in Tahitian and legend tells that the island emerged from the water at the behest of the Gods, before its coral cousins. You will have the opportunity to enjoy its exceptional lagoon, relaxing in the shade of the coconut trees, as well as to dive with the multicolored fishes and harmless rays that dance in this water, in the midst of the coral reefs.



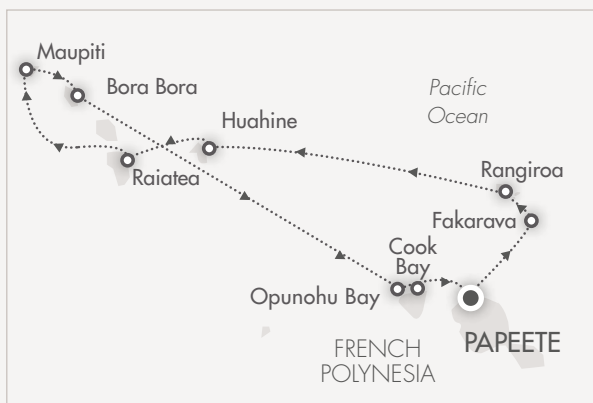
PAPEETE

Discover Papeete, capital of French Polynesia, located on the famous island of Tahiti, at the heart of the Society Islands. If Tahiti as a whole is renowned throughout the world for its legendary beauty and its precious pearls, Papeete is one of the jewels in its crown. At the water's edge, bungalows on stilts offer a breathtaking view over the azure lagoons, whilst the lush forests are teeming with secret and wild areas, without forgetting the “*Mapuru Paraita*” market, for which the city is famous. Do not miss the chance to immerse yourself in this concerto of multicolored flavours and fragrances, between coconut milk, Tiare flower garlands and precious mother-of-pearl ornaments.



PAPEETE • PAPEETE

LE SOLÉAL - From Sept. 26th to Oct. 06th 2016
11 days / 10 nights



DAY	ITINERARY
D 1	Papeete (Tahiti, French Polynesia) Embarkation from 16.00 to 17.00
D 2	Fakarava (Tuamotu, French Polynesia)
D 3	Rangiroa (Tuamotu, French Polynesia)
D 4	Huahine (Society Islands, French Polynesia)
D 5	Raiatea (Society Islands, French Polynesia)
D 6	Maupiti (Society Islands, French Polynesia)
D 7	Bora Bora (Society Islands, French Polynesia)
D 8	Bora Bora (Society Islands, French Polynesia)
D 9	Opunohu Bay (Society Islands, Moorea, French Polynesia)
D 10	Cook Bay (Society Islands, Moorea, French Polynesia)
D 11	Papeete (Tahiti, French Polynesia). Disembarkation.

YOUR PRE CRUISE (from Papeete)

- Visit and relaxation in Papeete (1 day/1 night)
Price per person: **please consult us.**

YOUR POST CRUISE (from Papeete)

- Relaxation at the Tahiti Pearl (1 day)
Price per person: **please consult us.**

For more information on detailed descriptions of your programs and prices, please consult www.ponant.com or call our travel agents.

POLYNESIA & EASTER ISLAND

From Papeete to Hanga Roa via the Tuamotu, discover unusual destinations such as the Gambier Islands, which figure among the most little-known destinations in Polynesia, or Easter Island and its mysterious megalithic statues. Join us aboard LE SOLÉAL for an exceptional cruise to the heart of the Pacific.



GAMBIER ISLANDS

Located in Polynesia's Far East, the Gambier Islands – without a doubt the most unspoiled and little-known destination in all of Polynesia – are calling you... Covered in unusual, lush vegetation ranging from pine trees to tropical flowers, this archipelago is mainly composed of myriad mountainous islands and islets encircled by a wide, 80 km-long coral belt (50 miles), creating a lagoon of varied and changing colours. Discovered and named by Captain Wilson in 1797, after Admiral James Gambier, the archipelago has become a true natural and cultural gem boasting numerous treasures. When *LE SOLÉAL* stops here, do not miss the gorgeous Saint Michael's Cathedral, situated on Mangareva, a faraway island with an unusual architectural heritage.

MANGAREVA - RIKITEA

During your cruise aboard *LE SOLÉAL*, discover the tall island of Mangareva, meaning "floating mountain" in Polynesian, an unusual place nestling between sky and Ocean, surrounded by a magnificent coral reef and boasting an abundance of vegetation. Located in the Gambier archipelago, it is the cradle of Catholicism in this part of the world and boasts an exceptional cultural heritage, as demonstrated by the many vestiges of 19th century religious buildings here. Nestling in the heart of this historic site with idyllic landscapes, do not miss the small village of Rikitea, where one of Polynesia's wonders, Saint Michael's Cathedral, stands proudly, entirely built from coral and timber. Renowned for the quality of its immaculate black pearls, this small corner of paradise will gladly reveal its most beautiful treasures to you.



COMPLIMENTARY
EXCURSIONS
(see details p50)

PAPEETE • HANGA ROA

Aboard *LE SOLÉAL*

From October 06th to 19th 2016 (13 nights)

From 2 970 €

See price list page 58.

HIGHLIGHTS

- From Hanga Roa, discover the impressive Ahu Tahai and its monumental statues listed as **Archaeological Heritage by UNESCO**.
- On the Gambier Islands, visit Saint Michael's Cathedral, a magnificent building erected in 1840.
- From Mangareva, you can visit one of the most beautiful pearl farms.
- From Pitcairn, visit the museum and its great collection of items from the Bounty shipwreck.
- A lecturer passionate about Maori culture will be on board.



PITCAIRN

During your cruise, *LE SOLÉAL* will take you to the Pitcairn Islands, an unspoiled and idyllic subtropical environment with crystal-clear water, abundant flora and endemic wildlife. First, discover Pitcairn and its capital, Adamstown, a charming village named after James Adam, one of the mutineers of the famous *HMS Bounty* – a mutiny which has inspired a number of films, books and songs. During your stop here, do not miss the chance to visit the museum, which houses a large collection of objects retrieved from the *Bounty*. Farther North, admire the unique beauty of Ducie Island, surrounded by a turquoise lagoon encircled by precious coral reefs that are home to rich and surprising marine life. Succumb to the charms of this fascinating journey to the heart of generous landscapes brimming with history.



UNESCO

EASTER ISLAND

Mythical Easter Island is probably the most isolated place on earth. This tiny strip of land was visited by the first European, the Dutch explorer Jakob Roggeveen, on Easter Day, and today boasts a population of some 4,000 people. Aboard *LE SOLÉAL*, come and discover the famous megalithic vestiges of the Rapanui people, and unravel the mystery around the production of these basalt blocks ranging from 2.5 to 20 m high, the erection of the Moais and the wooden panels, known as "Rongo-Rongo", covered with symbols, some of which have yet to be deciphered. An exceptional heritage listed as a World Heritage Site by UNESCO since 1995.



PAPEETE • HANGA ROA

LE SOLÉAL - From October 06th to 19th 2016
14 days / 13 nights



DAY ITINERARY

D 1	Papeete (Tahiti, French Polynesia) Embarkation from 16.00 to 17.00
D 2	Fakarava (Tuamotu, French Polynesia)
D 3	At sea
D 4	At sea
D 5	Rikitea (Mangareva, Gambier Islands)
D 6	Taravai (Gambier Islands) Sailing along Temoe Island
D 7	At sea
D 8	Adamstown* (Pitcairn, British Overseas Territory)
D 9	Sailing along Ducie Island
D 10	At sea
D 11	At sea
D 12	Hanga Roa (Easter Island, Chile)
D 13	Hanga Roa (Easter Island, Chile)
D 14	Hanga Roa (Easter Island, Chile). Disembarkation.

* Disembarkation subject to weather conditions.

YOUR PRE CRUISE (from Papeete)

- Visit and relaxation in Papeete (1 day/1 night)
Price per person: **please consult us.**

YOUR POST CRUISE (from Hanga Roa)

- Discovery of Santiago
Price per person: **please consult us.**

For more information on detailed descriptions of your programs and prices, please consult www.ponant.com or call our travel agents.

JAPAN'S TRADITIONS

*Few countries exert such fascination over us as Japan...
As L'AUSTRAL sails around the country, you will discover its
greatest riches, offering an unusual array of landscapes and
culture. Sakaiminato, Miyajima, Tokyo or Pusan in South Korea,
let yourself fall under the spell of these mysterious regions.*



SAKAIMINATO - SAMOURAI CULTURE

Situated at the tip of the Yumigahama peninsula, Sakaiminato is a small Japanese city dating from the 20th century and covering some 28km². From this small city, protected from the waves by the Shimane peninsula opposite, set out to discover Medieval Japan and the former homes of the Samurais. Great feudal lords and valiant warriors, the Samurais built sumptuous homes and castles. During your time here, do not miss the chance to visit the famous 17th century Matsue castle, an architectural marvel and the last structure of its type still standing on the Japanese coast, or the 300-year old Bukeyashiki palace, a formidable legacy of the golden age of the Edo dynasty.



TOKYO

A city in perpetual motion, Tokyo has become one of the largest metropolises, with its anarchic architecture and its extraordinary energy, where huge sky-scrappers soar alongside the most sumptuous parks and sanctuaries of the city. When we call here, do not miss the visit to the Hakone National Park and Owakudani valley, a veritable paradise on earth made up of forests, mountains and hot springs, offering uninterrupted views over imposing Mount Fuji, the symbol of Japan of incomparable beauty. Discover the Asakusa neighbourhood and its busy shopping streets, or the Edo museum where you will relive the story and lives of the inhabitants at the time of the Samurais. Allow yourself to fall under the spell of the timeless charm and ancient atmosphere of this futuristic city with its millennial traditions.



KANAZAWA • OSAKA

Aboard L'AUSTRAL

From October 05th to 14th 2016 (9 nights)

From 2 660 €

See price list page 56.

HIGHLIGHTS

- **UNESCO sites:** the famous Mount Fuji ; the city of Kanazawa ; pilgrimage routes of Kumano Kodo ; the Buddhist temple of Seigantoji, from Shingu.
- From Sakaiminato, visit the Matsue Castle and the homes of the Bukeyashiki Samurais and discover Izumo and its sacred temple.
- From Tokyo, visit of the National Park of Hakone and the temple Sensoji, in the district of Asakusa.
- From the valley Owakudani, observation of the Mount Fuji, the highest mountain of Japan.
- From Shingu, sailing in the emerald green color of the Dorokyo Gorge aboard a local boat.
- Lecturer on board, specialist in Japanese culture.

UNESCO

SHIMIZU

At the foot of Mount Fuji, over twenty or so hectares where tea plantations grow alongside fields of bamboo, the Nihondaira Natural Park is a kingdom. Overlooking the city of Shimizu, the vegetation forms a natural sound barrier, and only birdsong disturbs the serene silence. From this verdant idyll, where the wide emerald vales offer a picture postcard setting, the majestic silhouette of the most beautiful volcano in the world culminates at 3,776 meters: in the pantheon of sacred mountains in Japan, Mount Fuji is the master. Do not miss the elegant profile of this solitary, snow-capped cone, a magnificent natural location, listed as a World Heritage site by UNESCO.



UNESCO

SHINGU

Located in Wakayama prefecture, the port town of Shingu was once the venerated spiritual centre for pariahs, pilgrims and Emperors, who performed a long pilgrimage through the high mountain passes. When L'Austral calls here, we invite you to enjoy the serenity of the silence of the Kumano Hongu Taisha sanctuary, one of the most important pilgrimage sites in Japan for more than a thousand years, and be invigorated by the positive energy of the huge Nachi Falls, opposite the Seigantoji Buddhist temple, a UNESCO World Heritage site and one of the many sacred sites in the region. Fall under the spell of this mysterious land, entirely dedicated to Shinto and Buddhist beliefs.



KANAZAWA • OSAKA

L'Austral - From October 05th to 14th 2016
10 days / 9 nights



DAY ITINERARY

- | DAY | ITINERARY |
|------|--|
| D 1 | Kanazawa (Japan)
Embarkation from 16.00 to 17.00 |
| D 2 | Sakaiminato (Japan) |
| D 3 | Pusan (South Korea) |
| D 4 | Miyajima (Japan) |
| D 5 | Tokushima (Japan) |
| D 6 | Tokyo (Japan) |
| D 7 | Tokyo (Japan) |
| D 8 | Shimizu (Japan) |
| D 9 | Shingu (Japan) |
| D 10 | Osaka (Japan). Disembarkation. |



YOUR PRE CRUISE (from Kanazawa)

- Samourais and imperial capitals of Japan (4 days/3 nights)
Price per person: from 1 595 €.

YOUR POST CRUISE (from Osaka)

- Discovery of Osaka (1 day/1 night)
Price per person: from 505 €.

For more information on detailed descriptions of your programs and prices, please consult www.ponant.com or call our travel agents.

FROM JAPANESE COAST TO HONG KONG

Following itineraries punctuated with history and culture, L'Austral will sail to the heart of the "Land of the Rising Sun," a blend of modernity and tradition. Then she will chart a course for China, one of the oldest civilizations in the world, where centuries of history and Chinese culture lie side-by-side, via Shanghai, a futuristic city of a thousand faces.



UNESCO

HIROSHIMA

A new and modern city, Hiroshima has become the "City of Peace", following the tragic event whose scars it secretly hides... This port of call offers the unique opportunity to visit the Peace Memorial Park where you can visit the Memorial Museum, a UNESCO World Heritage site. Not far from here, anchored deep in the Inland Sea, discover the sacred island of Miyajima home to both men and gods. It is the gateway to the sublime Shinto Shrine of Itsukushima, a UNESCO World Heritage Site whose entrance is guarded by magnificent vermilion Torii, which seem to float on the waters of the bay.



JAPAN

Long cloaked in mystery as a result of being autarchic and insular, Japanese civilization has followed a truly unique path. With its 3,900 small islands and its 4 main isles, the Japanese archipelago offers visitors an unusual palette of landscapes and cultures and a rich medley of traditions, with secular temples and quiet sanctuaries co-existing alongside the futuristic technology of its bustling cities. In the Land of the Rising Sun, the pace is set by both the frenetic energy of the country's major cities with their unique architecture, and the serenity of its gardens, whose secrets are guarded by majestic scarlet "Torii". Eager for progress and enriched by its medieval past, the former Empire of Japan has an exceptionally refined culture.



OSAKA • HONG KONG

Aboard L'Austral

From October 14th to 26th 2016 (12 nights)

From 3 660 €

See price list page 56.

HIGHLIGHTS

- **UNESCO sites:** the sanctuary of Miyajima; Xian and the legendary Terracotta Army and the classic gardens of Suzhou, from Shanghai ; the Hiroshima Peace Memorial Park.
- From Tamano, visit of Naoshima, a museum-island entirely dedicated to contemporary art.
- Visit of the Uwajima Castle and the old town of Uchiko and its Taga sanctuary.
- Discover majestic Mount Sakurajima and its volcano, symbol of the city of Kagoshima.
- Lecturer on board, specialist in Japanese and Chinese civilizations.

♥ FROM SHANGHAI : OVERLAND TO XIAN

You will be comfortably settled on the outer decks of *L'Austral* to watch the coastline of Shanghai appear before you. Nestled in the heart of the Yangtze Delta and bathed by the East China Sea, the largest city in China is both modern and rich in ancestral customs, combining the skyscrapers of Pudong district with winding streets and traditional homes. Always keen to be ahead of its time, everything in this city of a thousand faces is excessive, extraordinary and above all futuristic. It is from this very special and innovative port of call that we invite you to visit the historic city of Suzhou and its Classical Gardens, listed as a UNESCO World Heritage Site. And why not take an exceptional extension trip to discover Xian and its legendary Terracotta Army, recognized as being the most important archaeological discovery of the last century. Between the past and the future, we promise you a stopover rich in emotions that will meet all your expectations.



HONG KONG

Hong Kong, city of lights - A blend of West and East with its unforgettable bay, its modern skyscrapers, its typical markets, its lively shops that are veritable caverns of unimaginable treasures. The name Hong Kong incorporates a number of territories: Hong Kong island itself, the Kowloon peninsula, the New Territories and the small neighboring islands. Despite its colonial heritage, its huge urban expanses, its renowned business culture and its incessant activity, the city has managed to preserve a typically Chinese character and some very attractive traditional aspects. Do not miss Aberdeen district and its colored junks, the occasion for you to discover the bustle of daily life aboard a traditional sampan.



OSAKA • HONG KONG

L'Austral - From October 14th to 26th 2016
13 days / 12 nights



DAY ITINERARY

- D 1 **Osaka** (Japan)
Embarkation from 16.00 to 17.00
- D 2 **Tamano - Uno Ko** (Japan)
- D 3 **Hiroshima** (Japan)
- D 4 **Uwajima** (Japan)
- D 5 **Kagoshima** (Japan)
- D 6 **Nagasaki** (Japan)
- D 7 **At sea**
- D 8 **Shanghai** (China)
- D 9 ♥ **Shanghai** (China)
- D 10 **At sea**
- D 11 **Xiamen** (China)
- D 12 **Hong Kong** (Hong Kong)
- D 13 **Hong Kong** (Hong Kong). *Disembarkation.*

♥ OVERLAND:

Xian from Shanghai (3 days/2 nights). **From 1 345 €.**
For more informations, please consult www.ponant.com or your travel agent.

YOUR PRE CRUISE (from Osaka)

- **Kyoto and Nara, imperial capitals** (3 days/3 nights)
Price per person: **from 1 670 €.**

YOUR POST CRUISE (from Hong Kong)

- **Discovery of Hong Kong** (1 day)
Price per person: **from 230 €.**

For more information on detailed descriptions of your programs and prices, please consult www.ponant.com or call our travel agents.

VIETNAMESE COASTLINES

Surrounded by the Gulf of Thailand, the Gulf of Tonkin and the South China Sea, Vietnam seems to have sailed through time without suffering its effects. Aboard L'Austral, we invite you to discover the splendours and mysteries of the country of two deltas, which will reveal its sumptuous landscapes of terraced paddy fields, lush jungle and cities that blend past and present.



UNESCO

HAIPHONG - HANOI

Founded more than 1,000 years ago on the right bank of the Red River, this ancient city whose name means "beyond the river" has maintained over the centuries a poetic aspect and a nostalgic charm. In Hanoi, you can find mythical city of temples and pagodas, a trading city with its narrow streets and also a city that dreams in front of the mirror of its lakes. The gateway to Vietnam, open to the world, Hanoi remains authentically Vietnamese, despite the fact that it has been forged by two cultures, Chinese and French, which are visible in its architecture and historic districts. When L'Austral calls at Haiphong, do not miss the visit to the Ho Chi Minh Mausoleum, the very beautiful One Pillar Pagoda or the Temple of Literature, dedicated to Confucius, a UNESCO World Heritage monument.

UNESCO

DA NANG - HOI AN

Lulled by the quite waters of the Thu Bon River, Hoi An seems to slumber under a spell that made time stand still. This former port city was very prosperous in the 15th century, and rich merchants based their trading posts there, building sturdy wooden houses in bright colors with roofs of ceramic tiles. A sleepy and charming village will transport you back through the centuries to a time where sampans supplied the surrounding markets with a thousand and one products, perfumes and flavors. A wander through its car-free streets is the best way to travel through time and discover this gentle nostalgia which has earned it a place on the UNESCO World Heritage list.



HONG KONG • HO CHI MINH

Aboard L'Austral

From Oct. 26th to Nov. 04th 2016 &
from Nov. 13th to 22nd 2016 (9 nights)

From 2 280 €

See price list page 56.

HO CHI MINH • HONG KONG

Aboard L'Austral

From November 04th to 13th 2016 (9 nights)

From 2 280 €

See price list page 56.

HIGHLIGHTS

- **UNESCO sites:** The Temple of Literature in Hanoi ; the natural site of Ha Long Bay ; the nostalgic city of Hoi An and the imperial city of Hue.
- Discover Hong Kong, the "City of lights", with its blend of modern skyscrapers, traditional markets and lively boutiques.
- The historic heart of Hanoi, capital of the North, a satisfying blend of past and present.
- Traditional junks in Ha Long Bay, a veritable natural wonder.
- Sailing on the Saigon River, home to many colorful floating markets.
- Experienced lecturer on board, specialist in vietnamese culture.



CHAN MAY - HUE

A UNESCO World Heritage Site, Hue is proud of its past and the regal origins of its ancestors. A picturesque city when the weather is fine, Hue is shrouded in mystery on less glorious days. The former capital of the Nguyen dynasty nestles in a bend in the Perfume River which flows in a valley between lush green hills. A number of landmarks testify to its former grandeur - you can visit the Imperial City nestled within the walls of the citadel and opposite the imposing Flag Tower, or the Thien Mu Pagoda, who hurls his frail silhouette towards the sky. Further, discover the mausoleum of the Tu Duc emperor. Like all sovereigns, the Nguyen emperors were concerned with the eternity of their life on the other side, and they paid particular attention to the construction of their mausoleum.



HO CHI MINH

Founded in the 17th century, Ho Chi Minh City, formerly Saigon, was initially a small trading port of the Khmer kingdom. A century later, it became the capital of Cochinchina and the largest French colony of the Far East. Its former name of Saigon, which still evokes the mysteries of the East, was a legendary source of inspiration for the novels of the French author Marguerite Duras. Today it is a thriving metropolis, both the largest city in the country and the economic powerhouse of Vietnam. From Ho Chi Minh, you will set off to discover the Mekong, the bearer of riches in its bright green surroundings, and also known as the "River of Nine Dragons." Do not miss the Mekong Delta where little colored ships throng on market days.



HONG KONG • HO CHI MINH

L'Austral - From Oct. 26th to Nov. 04th 2016
& from November 13th to 22nd 2016
10 days / 9 nights



DAY ITINERARY

- D 1 **Hong Kong** (Hong Kong)
Embarkation from 16.00 to 17.00
- D 2 *At sea*
- D 3 **Haiphong** (Vietnam)
- D 4 **Ha Long Bay** (Vietnam)
- D 5 **Da Nang** (Vietnam)
- D 6 **Chan May** (Vietnam)
- D 7 *At sea*
- D 8 *Sailing on Saigon River*
Ho Chi Minh (Vietnam)
- D 9 **Ho Chi Minh** (Vietnam)
- D 10 **Ho Chi Minh** (Vietnam). *Disembarkation.*

HO CHI MINH • HONG KONG

L'Austral - From November 04th to 13th 2016
10 days / 9 nights



DAY ITINERARY

- D 1 **Ho Chi Minh** (Vietnam)
Embarkation from 16.00 to 17.00
- D 2 **Ho Chi Minh** (Vietnam)
- D 3 **Ho Chi Minh** (Vietnam)
Sailing on Saigon River
- D 4 *At sea*
- D 5 **Chan May** (Vietnam)
- D 6 **Da Nang** (Vietnam)
- D 7 **Ha Long Bay** (Vietnam)
- D 8 **Haiphong** (Vietnam)
- D 9 *At sea*
- D 10 **Hong Kong** (Hong Kong). *Disembarkation.*

VIETNAMESE MYSTERIES & INDONESIAN TREASURES

From bustling Ho Chi Minh, set off to discover the Vietnamese shores on an exceptional cruise along the famous Saigon River. L'AUSTRAL will take you to the heart of the Indonesian archipelago for its thousand and one hidden treasures. From ancient temples to big, ultra-modern cities and vast beaches of golden sand, Indonesia will reveal to you its most precious secrets.



SAILING ON THE SAIGON RIVER

Bordering the former colonial district in the East of the city, the Saigon River gives Ho Chi Minh the image of a city that embraces its Delta and is open to the world. A majestic waterway located in Southern Vietnam, it takes its source near Phum Daung in the South-East of Cambodia. From the gardens that have been built along the Ton Duc Thang Avenue, do not miss the ceaseless ballet of the fragile looking skiffs that sail their way past the huge cargo ships coming from Hong Kong and Taiwan. Enjoy the strains of traditional Vietnamese music and be seduced by the splendid scenery along the riverbanks, such as the colonial houses, the last relics of the former French districts. Discovering the Saigon River, getting lost in one of the many colorful floating markets, or gazing at one of the countless pagodas that illustrate the fervour of its inhabitants, so different from our Western culture.



KARIMUNJAWA

During your cruise, L'AUSTRAL will take you to discover Karimunjawa, an idyllic archipelago composed of 27 small islands, far-removed from the modern world. At the place where the Pacific Ocean meets the Indian Ocean, translucent waves matching the colour of the horizon crash on long beaches of immaculate white sand. Listed as a Marine National Park, these stunningly beautiful islands lined with coral reefs are an extraordinary natural heritage. Equipped with a mask and tuba, we invite you to discover a fascinating underwater world where, in just a few seconds, dizzyingly bright multicolored marine life will reveal itself to you, including shimmering starfish, stingrays and mischievous crabs.



HO CHI MINH • BALI

Aboard L'AUSTRAL

From Nov. 22nd to Dec. 02nd 2016 (10 nights)

From 2 540 €

See price list page 56.

HIGHLIGHTS

- **UNESCO site:** from Semarang, visit the biggest Buddhist monument in the world ; Prambanan, a masterpiece of Hindu and Borobudur cultures, considered as the biggest Buddhist monument in the world.
- Exceptional sailing on the Saigon River.
- From Semarang, you may opt for a two-day overland to visit Semarang and Borobudur, including an overnight stay in a hotel.
- Beach and snorkelling in the preserved archipelago of Karimunjawa.
- Passionate lecturer on board.

SINGAPORE

Lying at the tip of the Malay Peninsula, the "Lion City" is known throughout the world for its economic success and its cosmopolitan lifestyle. A trading city on the edges of the Orient, Singapore can be proud of its multiculturalism. Its ethnic, religious and cultural diversity are an illustration of the complexity of an entire continent. Still rich in British traditions and stoicism, the city is now the third largest financial centre in the world, an essential destination for the jet set and business people. Entirely dedicated to business, Singapore is also home to a remarkable artistic vitality that combines the best of Western and Eastern cultures. Do not miss the Thian Hock Keng temple dedicated to Ma Zu, the goddess of the sea, and discover the colonial district, the veritable cultural heart of the city.



UNESCO

♥ FROM SEMARANG : OVERLAND TO BOROBUDUR & PRAMBANAN

Java: an island where nature deploys its full glory. Nature has created superb terraced paddy fields where a thousand and one treasures are hidden. One of them, a UNESCO World Heritage Site, includes almost 240 sanctuaries dating back to the 9th century - The Prambanan temples, the largest group of Hindu sanctuaries in Indonesia. From Semarang, discover this masterpiece of Hindu art, built at the height of the powerful Sailendra dynasty, and represents not only an inestimable architectural and cultural treasure but is also a moving reminder of its illustrious past. Farther on, we invite you to head for the exceptional Borobudur temple, also listed as a UNESCO World Heritage Site. This superb monument crafted by man between 778 and 856 is considered to be the largest Buddhist monument in the world and is now deemed to be the true symbol of an ancient and glorious heritage.



HO CHI MINH • BALI

L'Austral - From Nov. 22nd to Dec. 02nd 2016
11 days / 10 nights



DAY ITINERARY

- D 1 **Ho Chi Minh** (Vietnam)
Embarkation from 16.00 to 17.00
- D 2 **Sailing on Saigon River** (Vietnam)
- D 3 **At sea**
- D 4 **Singapore** (Singapore)
- D 5 **At sea**
- D 6 **Jakarta** (Indonesia)
- D 7 **Karimunjawa** (Indonesia)
- D 8 ♥ **Semarang** (Indonesia)
- D 9 **Semarang** (Indonesia)
- D 10 **At sea**
- D 11 **Benoa - Bali** (Indonesia). *Disembarkation.*



OVERLAND:

Borobudur & Prambanan from Semarang (2 days/1 night).
For more informations, please consult www.ponant.com or your travel agent.

YOUR PRE CRUISE (from Ho Chi Minh)

- **Imperial city of Angkor and visit of Saigon** (4 days/3 nights)
Price per person: **from 1 590 €.**

YOUR POST CRUISE (from Bali)

- **Discovery of Bali's landscapes** (1 day)
Price per person: **please consult us.**

For more information on detailed descriptions of your programs and prices, please consult www.ponant.com or call our travel agents.

FROM INDONESIA TO AUSTRALIA

The Indonesian archipelago is composed of a multitude of islands dotting the capricious waters at the heart of the Indian Ocean. This mosaic of cultures offers travellers a multitude of fascinating and enchanting landscapes. Then, L'Austral will head South to discover Australia, with its cosmopolitan cities, Aboriginal culture, and legendary Great Barrier Reef.



UNESCO

KOMODO NATIONAL PARK

On the remote island of Komodo, the eye can feast on a landscape of savannah and mangrove. A protected natural reserve, it is home to the largest lizards still walking the Earth, distant cousins of the dinosaurs: The monitor lizards of Komodo - the Komodo dragons. Do not miss the visit to the Komodo National Park, which has been a UNESCO World Heritage Site since 1991. These volcanic islands are inhabited by around 5,700 giant lizards, who earned their name of "Komodo Dragon". These reptiles can grow to 4 m in length and weigh around 70 kg, and are found nowhere else on earth, so they present a huge scientific interest for the study of evolution.



BANDA NEIRA

Like a pearl necklace set against a coral backdrop, the 10 small Banda Islands are dotted between Asia and the Pacific Ocean. From the age-old traditions of authentic cultures to ancient vestiges, traditional arts and crafts and, above all, powerful volcanoes, coral reefs and lush green jungle... The attractions of this remote archipelago seem endless. Better known as the legendary "Spice Islands" of the Ancient World, these small volcanic landmasses are covered with imposing aromatic conifers that produce nutmeg and mace, two precious spices. During your cruise, visit Banda Neira, the islands' capital. Located on the main island of Palau Neira, this picturesque town proudly invites visitors to admire its rich and moving history, reflected in its architecture - a mix of forts, old cannons and beautiful colonial homes.



BALI • CAIRNS

Aboard L'Austral

From December 02nd to 16th 2016 (14 nights)



From 3 550 €

See price list page 58.

HIGHLIGHTS

- **UNESCO sites:** Komodo National park; from Cairns, the great barrier reef.
- "Expedition" cruise accompanied by our professional naturalist-guide.
- Outings everyday in Zodiac® dinghies.
- From Lizard Island, snorkelling in the seabed of Watson's Bay.
- Discover the Asmat region with small rural settlements and a wild beauty.

ASMAT'S REGION

Located in the Coral Triangle, West New Guinea is a remote, faraway land and one of the most mysterious countries in the world. This "Land of a Thousand Cultures" under Indonesian sovereignty and where most of 700 languages co-exist remains a land of wild beauty and constant contrasts, where razor-sharp mountains covered in thick tropical jungle stand next to immaculate sandy beaches. As *L'Austral* slowly makes its way to Indonesian landscapes, set off in one of our Zodiac® inflatables to discover Asmat, the most fascinating of its regions, with small villages with thatched roofs and stilt houses. Between volcanic cones and vestiges of a bygone era, do not miss this "land of the unexpected", where the thrill of adventure and the pleasure of trekking off the beaten tracks are still intense.



UNESCO

CAIRNS - THE GREAT BARRIER REEF

In the far North of Australia's Queensland coast, Cairns, a city of a thousand colours, is surrounded on one side by lush slopes covered in exotic rainforests and on the other by the turquoise blue waters of the Coral Sea, whose splendour culminates in the extraordinarily vast expanse of its legendary Great Barrier Reef. With its tropical atmosphere, mangrove-lined paths, hip inner suburbs and numerous historic sites, Cairns has a few surprises in store for you, combining both the advantages of a modern city and fabulous landscapes. Comfortably settled aboard *L'Austral*'s outside decks, you will be able to watch as its numerous old colonial buildings, its picturesque port and the exceptional panorama surrounding the city appear before you. An idyllic setting at the heart of an unspoiled environment.



BALI • CAIRNS

L'Austral - From December 02nd to 16th 2016
15 days / 14 nights



DAY ITINERARY

- | | |
|------|--|
| D 1 | Benoa - Bali (Indonesia)
Embarkation from 16.00 to 17.00 |
| D 2 | Pink Beach (Indonesia) |
| D 3 | Komodo (Indonesia) |
| D 4 | Larantuka (Indonesia) |
| D 5 | At sea |
| D 6 | Banda Neira (Indonesia) |
| D 7 | Kay Island (Indonesia) |
| D 8 | Triton Bay (Indonesia) |
| D 9 | At sea |
| D 10 | Agats (Indonesia - West Papua) |
| D 11 | At sea |
| D 12 | Cape York (Australia) |
| D 13 | At sea |
| D 14 | Lizard Island (Australia) |
| D 15 | Cairns (Australia). Disembarkation. |

YOUR PRE CRUISE (from Bali)

- **Discovery of Bali** (1 day/1 night)
Price per person: **please contact us.**

YOUR POST CRUISE (from Cairns)

- **Cairns, at the edge of the tropical rain forest** (1 day)
Price per person: **please contact us.**

For more information on detailed descriptions of your programs and prices, please consult www.ponant.com or call our travel agents.

PAPUA NEW GUINEA & SOLOMON ISLANDS

Located in the Coral Triangle, the faraway land of Papua New Guinea is one of the most mysterious in the world. When L'AUSTRAL drops anchor on the shores of this land of permanent contrasts, you will have the chance to discover its wild beauty. Farther on, the Solomon Islands will welcome you and, through our different stops, you will discover a true paradise for adventurers and nature lovers.



EXPEDITION WITH PONANT

Discover eternal Asia with our "Expedition" cruises, which will show you the best of what these distant lands have to offer. Excursions in Zodiac® dinghies, accompanied by our experienced naturalist-guides will allow you to get as close as possible to the immensely rich wildlife and plant life, at the heart of unspoiled archipelagos, between isolated inlets, dense forest and long white-sand beaches. Between Papua and the Solomon Islands, before your adventures take you to the mysterious Vanuatu archipelago, come and discover Asia differently. It will be a chance for you to contemplate unique landscapes and meet the locals in the heart of traditional villages.

TUFI

Hidden behind a name that is much too long and living in the shadow of its imposing neighbour, Australia, Papua New Guinea offers visitors extraordinary nature that cannot be found anywhere else. Nicknamed "the land of a thousand cultures", where 800 languages co-exist, Papua New Guinea remains a land of wild beauty and permanent contrast of jagged mountains covered in dense rainforest, and of white-sand beaches surrounding the world's most stunning underwater scenery. During your cruise, we will make an exceptional stop on Tufi. Often called "Papua's best kept secret", this natural wonder nestling in the fjords of the South Pacific boasts an exceptional cultural richness thanks to its numerous traditional villages; but also extraordinary underwater scenery, including coral reefs, mysterious shipwrecks and multicolored fishes.



CAIRNS • PORT VILA

Aboard L'AUSTRAL

From December 16th to 28th 2016 (12 nights)



From 3 040 €

See price list page 58.

HIGHLIGHTS

- Spend Christmas in the archipelago of the Solomon Islands.
- "Expedition" cruise accompanied by our professional naturalist-guides to talk about hidden treasures of those faraway islands.
- Take numerous trips in Zodiac® dinghies to get closer to nature and wildlife.
- From Rabaul, observation of the Mount Tavurvur, the most active volcano of the region.
- Discover Papua New Guinea, mysterious land of fine-sand beaches and deep jungle.
- Discover the Solomon Islands and their picture-postcards landscapes.



PAPUA NEW GUINEA

Travelling to Papua New Guinea means leaving the beaten track, meeting primary tribes and discovering a rich and still little-known culture. A land at the end of the earth, Papua New Guinea brings together a number of islands, mostly containing active volcanoes, in the heart of Oceania. The promise of a singular journey, to the heart of raw nature, the destination is wild and captivating. Inhabited by tribes living in near-autarky, Papua promises rich encounters and the discovery of a robust culture where the methods of hunting and fishing coupled with the animalist rituals promise a journey that is out of the ordinary. With more than 600 tropical islands, each with exceptional underwater life and shimmering colours, this land of adventurers boasts long white sandy beaches, mysterious caves, isolated inlets and immense primary rainforests.



SOLOMON ISLANDS

One of the last areas to fall under European religious and political control, the Solomon Islands remains, today, a hidden paradise in the South Pacific. It is a land of contrast and adventure, best known for its crystal waters and spectacular white sand beaches. Comprising over 990 islands, the diversity of landforms and cultures are striking. Village life remains much as it has done for centuries, unhurried, undeveloped and unspoilt. Whilst 95% of the population is Christian, traditional customs handed down from ancestral spirits, forms the basis of cultural values remaining today. The island chain played a significant role during the Second World War and many relics and wrecks remain providing a window into this tumultuous period.



CAIRNS • PORT VILA

L'Austral - From December 16th to 28th 2016
13 days / 12 nights



DAY ITINERARY

- | DAY | ITINERARY |
|------|---|
| D 1 | Cairns (Australia)
Embarkation from 16.00 to 17.00 |
| D 2 | At sea |
| D 3 | Alotau (Papua New Guinea) |
| D 4 | Tufi (Papua New Guinea) |
| D 5 | Kitava Island - Trobriands (Papua New Guinea) |
| D 6 | Rabaul (Papua New Guinea) |
| D 7 | Rabaul (Papua New Guinea) |
| D 8 | At sea |
| D 9 | Gizo - Ghizo Island (Solomon Islands)
Kennedy Island (Solomon Islands) |
| D 10 | Mbike Island (Solomon Islands) |
| D 11 | At sea |
| D 12 | Espiritu Santo (Vanuatu) |
| D 13 | Port Vila (Vanuatu). Disembarkation. |

YOUR PRE CRUISE (from Cairns)

- Cairns, at the edge of the tropical rain forest (1 day)
Price per person: **please contact us.**

YOUR POST CRUISE (from Port Vila)

- From Port Vila to Sydney : the iconic Opera House and Manly Beach (2 days/1 night)
Price per person: **please contact us.**

For more information on detailed descriptions of your programs and prices, please consult www.ponant.com or call our travel agents.

TREASURES OF THE PACIFIC

From Port Vila in the Vanuatu, embark aboard L'Austral and cruise to the heart of New Zealand via New Caledonia's remote islands. Uncover the hidden treasures of the Pacific and spend New Year's Eve at the heart of this small corner of unspoiled paradise.



VANUATU

Vanuatu is an archipelago of 83 islands nestled between the warm tropical waters of the Coral Sea and the vast expanse of the Pacific Ocean. It is home to a unique blend of ancient traditional villages, picture perfect beaches, accessible active volcanoes and coral reefs teeming with life. It offers an idyllic setting for anyone seeking adventure or wanting to relax on a tropical beach fringed with palm trees. With no written language, songs and dances are of paramount importance in maintaining traditions. Art, in its many forms, from body decorations and tattoos, to elaborate masks, headwear and carvings are a vital part of ritual celebrations and the social life of the many villages spread throughout the archipelago. The largest Island, Espiritu Santo, is the highly fictionalized locale of James Michener's *Tales of the South Pacific* and the subsequent Rodgers and Hammerstein musical, *South Pacific*.



THE LOYALTY ISLANDS

Long considered by sailors as one of the most captivating sites on earth, the Loyalty Islands abound with pristine white sand beaches fringing crystal-clear turquoise lagoons. Each island has its own characteristics, from the rugged coastal scenery of Maré and breathtaking cliff-top views of Lifou to the serene beaches and tranquil lagoons of Ouvéa stretching endlessly to the horizon. The first recorded European contact is attributed to the English Captain William Raven from the London trading ship *Britannia* in 1793 during a voyage from Norfolk Island to Batavia. The native people of the Loyalty Islands are of mixed Melanesian and Polynesian ancestry, creating a rich cultural heritage that is a paradise for ethnologists.



PORT VILA • AKAROA

Aboard L'Austral

From Dec. 28th 2016 to 07th Jan. 2017 (10 nights)

From 3 060 €

See price list page 58.



HIGHLIGHTS

- Discover New Caledonia, its islets and its numerous lagoons **listed as UNESCO sites**.
- "Expedition" cruise accompanied by our professional naturalist-guides.
- Take numerous trips in Zodiac® dinghies to the heart of lagoons in the Pacific.
- Snorkelling in the calm and crystal waters of Bay of Islands.
- On Tanna Island, visit of the Mount Yasur and its numerous legends.

THE BAY OF ISLANDS

The Bay of Islands is a stunning natural bay with crystal-clear water, located in the Northland region at the Northern tip of New Zealand. It enchants visitors with its serene beauty, its charming villages full of artists, and its exceptional marine life. In this tropical playground composed of 144 islands, take the time to explore and discover the wonders of this region, which is home to numerous marine species, such as the seal, the whale, the penguin and the dolphin, one of the country's native animals, and which boasts a wide range of landscapes including lush dunes, fine-sand beaches and spectacular cliffs. When we drop anchor here, do not miss your chance to visit the site of the Treaty of Waitangi, the founding document of New Zealand as a nation, agreed between the Maori people and the British, as well as an opportunity to meet the local troupe *Te Pitowhenuaqui*, which will put on a show to introduce you to New Zealand's indigenous culture.



THE NEW YEAR'S EVE AT THE HEART OF THE PACIFIC ISLANDS

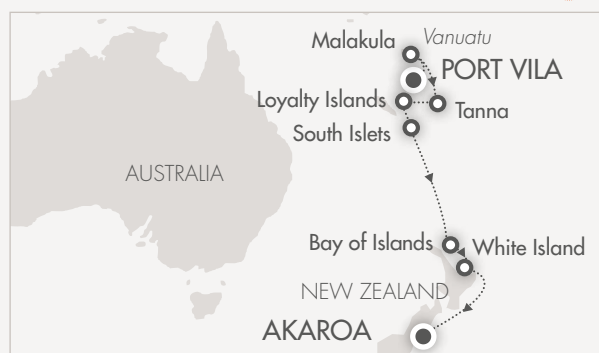
This year, gift yourself an unforgettable festive season, far from the cold and dreary weather at home. Whether at the heart of the Vanuatu archipelagos, on the long sandy beaches of New Caledonia or in the sparkling waters of New Zealand, you will get to enjoy the sun and traditions of the Caribbean, all so different from our own. Here, Christmas tree take place in the middle of hot sunny cities. You will spend your festive season on the golden sandy beaches in the shade of palm trees. Take the opportunity to discover the local culture on Christmas Eve and celebrate 2017 in the company of these islands' friendly locals.



PORT VILA • AKAROA

L'Austral - From 28th Dec. 2016 to 07th Jan. 2017

11 days / 10 nights



DAY ITINERARY

- | | |
|------|---|
| D 1 | Port Vila (Vanuatu)
Embarkation from 16.00 to 17.00 |
| D 2 | Rano Island - Malakula (Vanuatu) |
| D 3 | Tanna (Vanuatu) |
| D 4 | Loyalty Islands (New Caledonia) |
| D 5 | South Islets (New Caledonia) |
| D 6 | <i>At sea</i> |
| D 7 | <i>At sea</i> |
| D 8 | Bay of Islands (New Zealand) |
| D 9 | White Island (New Zealand) |
| D 10 | <i>At sea</i> |
| D 11 | Akaroa (New Zealand). Disembarkation. |

YOUR PRE CRUISE (from Port Vila)

- From Brisbane to Port Vila, koala and Aboriginal culture (2 days/2 nights)

Price per person: **please contact us.**

YOUR POST CRUISE (from Akaroa)

- Panoramas of Akaroa and Sydney (3 days/2 nights)

Price per person: **please contact us.**

For more information on detailed descriptions of your programs and prices, please consult www.ponant.com or call our travel agents.

NEW ZEALAND & SUB ANTARCTIC ISLANDS

The Sub Antarctic Islands are among the last unspoilt environments on Earth. Almost half of the world's albatross and penguin species reside here and The Snares Island alone boasts more nesting seabirds than the entire realm of the British Isles. For nature lovers, birders, photographers, and travellers wishing to venture where few have gone before, these UNESCO World Heritage Sites provide a truly privileged glimpse into a unique world.



UNESCO

MACQUARIE ISLAND

Long celebrated as one of the wonder spots of the world, the Macquarie Island Nature Reserve lies 1,500 km south-southeast of Tasmania, halfway between Australia and Antarctica. It is an island of great beauty and outstanding natural diversity, a breeding place for many of the Southern Ocean's birds and animals. The avian statistics are remarkable; around 3.5 million seabirds arrive on Macquarie Island each year to breed and moult. These include an estimated 850,000 Royal Penguins, up to 500,000 breeding pairs of Rock-Hopper Penguins, 100,000 breeding pairs of King Penguins and over 5,000 breeding pairs of Gentoo Penguins. In addition 4 species of fur seals and the southern elephant seal come ashore to breed and moult on Macquarie Island every year.

UNESCO

THE AUCKLAND ISLANDS

Lying 500 km South of New Zealand, the Auckland Islands, or "Motu Maha" in Maori are the largest, highest and biologically richest of the New Zealand Sub Antarctic Islands. The Islands have been identified as an Important Bird Area (IBA) by BirdLife International as they hold important seabird breeding colonies. They are the stronghold of the rare yellow-eyed penguin. Most of the world's population of white capped albatross breed here (some 90-100,000) as do Gibson's Wandering Albatross, Southern Royal Albatross, Light-Mantled Sooty Albatross and Antipodean albatross. The Auckland Islands are also the primary breeding location of the threatened New Zealand Sea Lion.



AKAROA • MILFORD SOUND



Aboard L'Austral

From January 07th to 22nd 2017 (15 nights)

From 5 800 €

See price list page 58.

HIGHLIGHTS

- **UNESCO sites:** All the stopovers on this cruise on the Sub Antarctic islands are listed as UNESCO World heritage.
- Outings everyday in Zodiac® dinghies.
- "Expedition" cruise to unusual destinations in New Zealand, accompanied by our professional naturalist-guides.
- Sailing through the splendid fjords of New Zealand.
- Exceptional wildlife: colonies of fur seals, elephant seals, king penguins, yellow-eyed penguins, royal penguins and numerous bird species.



EXPEDITION TO THE "GALÁPAGOS OF THE SOUTHERN OCEAN"

During your expedition, our expert team of naturalists and historians will guide you through these unique destinations. Remarkably, every destination we visit is a UNESCO World Heritage Site. These destinations are among the last unspoilt environments on Earth, they are home to a rich diversity of plants, seabirds and marine mammals, many of which are found nowhere else in the world. An estimated 170,000 people visit the Galapagos Islands every year, yet less than 1,200 get the opportunity to experience the unique habitats of the Sub Antarctic islands. If you are looking for your next great adventure sail aboard Le Soléal for an amazing experience.



UNESCO

SAILING IN NEW ZEALAND'S FJORDS

In New Zealand's South-West, L'AUSTRAL will sail to the heart of an extraordinary park with landscapes shaped by successive glaciations, including rocky hills, tall cliffs, mirror lakes and waterfalls. These uninhabited fjords are teeming with amazingly diverse wildlife: penguin and seal colonies sun themselves on the shoreline, while dolphins and whales indulge in bow riding as ships sail by. Set off to discover Dusky Sound, Doubtful Sound, and the more well-known Milford Sound, which the author Rudyard Kipling considered to be the 8th wonder of the world. There, reigns absolutely calm, disturbed only by bird songs and the sound of water cascading from the cliff tops.



AKAROA • MILFORD SOUND

L'AUSTRAL - From January 07th to 22nd 2017
16 days / 15 nights



DAY ITINERARY

- | | |
|------|--|
| D 1 | Akaroa (New Zealand)
Embarkation from 16.00 to 17.00 |
| D 2 | At sea |
| D 3 | Bounty Islands (New Zealand) |
| D 4 | Antipodes Island (New Zealand) |
| D 5 | At sea |
| D 6 | Campbell Island (New Zealand) |
| D 7 | At sea |
| D 8 | Macquarie Island (Australia) |
| D 9 | Macquarie Island (Australia) |
| D 10 | Macquarie Island (Australia) |
| D 11 | At sea |
| D 12 | Auckland Islands (New Zealand) |
| D 13 | The Snares (New Zealand) |
| D 14 | At sea |
| D 15 | Dusky Sound (New Zealand)
Doubtful Sound (New Zealand) |
| D 16 | Milford Sound (New Zealand). Disembarkation.
Transfer from Milford Sound to Queenstown by bus (apr. 4 h) |

YOUR PRE CRUISE (from Akaroa)

- From Auckland to Akaroa port (1 day/1 night)
Price per person: **please contact us.**

YOUR POST CRUISE (from Milford Sound)

- From Milford Sound to Sydney (3 days/2 nights)
Price per person: **please contact us.**

For more information on detailed descriptions of your programs and prices, please consult www.ponant.com or call our travel agents.

THE BEST OF NEW ZEALAND

New Zealand is an insular country in Oceania, bathing in the Southern Pacific Ocean and the Tasman Sea. This Eden composed of two islands whose landscapes are infinitely varied awaits your visit. From one port of call to the next, these remote, mineral and wild lands will reveal themselves to you as rich mosaics of colour and light and the ancestral land of the Maori culture.



DUNEDIN

Located to the East of New Zealand's South Island, the Victorian city of Dunedin blends natural beauty and a fascinating cultural history. Surrounded by spectacular hills at the foot of a long port, this city is part of the Otago Peninsula, a long strip of volcanic land shaped like a finger and displaying sumptuous undulating landscapes. When *L'Austral* drops anchor here, do not miss your chance to visit the Royal Albatross Center in Taiaroa Head to observe fascinating birds whose wingspan can reach up to 3 metres, and to discover the tip of the peninsula, home to rare native animal species such as the little blue penguins or the yellow-eyed penguins, called Hoiho in Maori. Aboard a train, cross the fertile lands of the Taieri Gorge, famous for its sheer cliffs and spectacular ravines that frame the river, as well as its railway, a true marvel built by the first pioneers along the roughest of terrain.

PICTON

Journey to the antipodes... The Pacific Ocean provides the backdrop as *L'Austral* heads towards New Zealand, a faraway insular paradise of singular beauty. From romantic lakes to majestic glaciers, sulphur geysers, tropical rainforests, white-sand beach and Maori culture, the twin islands of the "land of the long white cloud" offer visitors the pristine beauty of their national parks and their unfathomable fjords. To the North-East of the South Island lies Picton. This small town surrounded by sea and hills welcomes you in an attractive and hip atmosphere amid numerous buildings from the colonial period. Once called "Newton", it was renamed during the Battle of Waterloo in honour of the general Sir Thomas Picton.



MILFORD SOUND • AUCKLAND

Aboard *L'Austral*

From Jan. 22nd to 31st & from Feb. 09th to 18th 2017 (9 nights)

From 2 720 €

See price list page 58.

AUCKLAND • MILFORD SOUND

Aboard *L'Austral*

From 31st January to 09th February 2017 (9 nights)

From 2 720 €

See price list page 58.

HIGHLIGHTS

- From Tauranga, discover the Wai-O-Tapu Thermal Wonderland and sail on Lake Rotorua aboard the Lakeland Queen.
- From the city of Wellington, discover the Zealandia eco-sanctuary, a site entirely dedicated to the unique history of New Zealand's conservation.
- From Picton, visit the Otago Aviation Heritage Center and its exhibitions of aircraft from World War I, and enjoy a wine tasting at the Brancott Estate Heritage Center.
- From Dunedin, visit of the Royal Albatross Center and discovery of the Taieri Gorge.
- A lecturer passionate by New Zealand history will be on board.



WELLINGTON

Capital of New Zealand since the 19th century, ancestral home to generations of Maori tribes, as confirmed by the many historical sites in the city, Windy Wellington, as the city is known, perfectly combines local traditions and a bustling nightlife. Avant-garde and friendly, skilfully blending history and modernity, the city is as startling as it is non-conformist. Its climate adds to its charm, giving it a unique atmosphere that is bound to surprise you during your stop there aboard *L'AUSTRAL*. Close by, the Zealandia nature reserve gives you the opportunity to visit several hundred hectares that are home to some of the country's rarest animals, such as the kiwi, the famous little wingless bird with a long bill that is emblematic of New Zealand.



TAURANGA - ROTORUA

Peacefully established on the Southern shore of the lake bearing the same name, Rotorua, or "second lake" in Maori, is by far New Zealand's most unusual city. Considered to be the heart of Maori culture, this city offers visitors the chance to discover all of its richness and variety through numerous activities such as a traditional meal, and shows combining singing and dancing to reveal this fascinating ancestral culture. On the edges of the city, a place like no other lies waiting to welcome you. Aboard *L'AUSTRAL*, you will be able to discover the heart of the surrounding protected forests, whose thick mantle conceals a multitude of treasures: volcanoes, hot springs, spouting geysers, rivers and gorges, and lakes that are sometimes deep blue, sometimes tinged in orange. This place will not fail to leave a lasting and memorable impression.



MILFORD SOUND • AUCKLAND

L'AUSTRAL - From Jan. 22nd to 31st & from Feb. 09th to 18th. 2017
10 days / 9 nights



DAY ITINERARY

- D 1 Transfer from **Queenstown** to **Milford Sound** by bus (apr. 4 h)
Milford Sound (New Zealand)
Embarkation from 16.00 to 17.00
- D 2 *Sailing the Dusky Sound*
- D 3 **Dunedin - Port Chalmers** (New Zealand)
- D 4 **Akaroa** (New Zealand)
- D 5 **Picton** (New Zealand)
- D 6 **Wellington** (New Zealand)
- D 7 **Napier** (New Zealand)
- D 8 *At sea*
- D 9 **Tauranga - Rotorua** (New Zealand)
- D 10 **Auckland** (New Zealand). Disembarkation.

AUCKLAND • MILFORD SOUND

L'AUSTRAL - From Jan. 31st au Feb. 09th 2017
10 days / 9 nights



DAY ITINERARY

- D 1 **Auckland** (New Zealand)
Embarkation from 16.00 to 17.00
- D 2 **Tauranga - Rotorua** (New Zealand)
- D 3 *At sea*
- D 4 **Napier** (New Zealand)
- D 5 **Wellington** (New Zealand)
- D 6 **Picton** (New Zealand)
- D 7 **Akaroa** (New Zealand)
- D 8 **Dunedin - Port Chalmers** (New Zealand)
- D 9 *Sailing the Dusky Sound*
- D 10 **Milford Sound** (New Zealand). Disembarkation.
Transfer from **Milford Sound** to **Queenstown** by bus (apr. 4 h)

BETWEEN NEW CALEDONIA & VANUATU

From Auckland, set off to discover New Caledonia and its islands, lost in the blue immensity of the Pacific Ocean. Further on, L'Austral will head for the Vanuatu archipelago and its long mountain ranges, its vast tranquil bays and its translucent lagoons.



AUCKLAND

Imagine a modern city, two harbors filled with thousands of boats, a gigantic bridge spanning the bay and, in the distance, islands shimmering in the sunlight and towering volcanoes all around... Welcome to Auckland, the "City of Sails". One of the few cities in the world to have harbors on two separate major bodies of water, it cleverly blends modernity and culture through numerous architectural gems. A place of art and fashion, Auckland's charm lies in its cosmopolitan atmosphere, its exceptional cultural venues and, of course, the omnipresence of water, which only adds to the magic of the place. This is an exceptional journey to the heart of the home of the *All Blacks* and the *America's Cup*.



NEW CALEDONIA

As a faraway, authentic land of contrasts, New Caledonia is an unusual, multifaceted destination. Poetically nicknamed "the island of eternal spring" by the Japanese, this faraway land was discovered by the explorer James Cook in the 18th century. Surrounded by crystal-clear waters and gently rocked year-round by the trade winds, it offers visitors exceptional panoramas of long, white-sand beaches, tranquil bays, mountain ranges and tall cliffs and, as its horizon, the most extraordinary of aquariums: the Pacific Ocean. At the start of your cruise, discover Noumea, whose evocative name means "Small Island with fish". Built on a peninsula shaped like a starfish, the city is surrounded by large bays that are home to beaches and marinas.



AUCKLAND • PORT VILA

Aboard L'Austral

From February 18th to March 01st 2017 (11 nights)

From 2 520 €

See price list page 58.



HIGHLIGHTS

- "Expedition" cruise to exceptional sites, accompanied by our professional naturalist-guides.
- From Espiritu Santo Island, snorkelling at the heart of the translucent lagoons and optional discovery of the historic locations dating from the Second World War (optional).
- On Tanna Island, visit of the Mount Yasur, imposing volcano with its numerous legends.
- A lecturer specialist of the Pacific Islands and their culture will be on board.

TANNA

Located to the north of New Caledonia and once called the New Hebrides, the Vanuatu archipelago scatters its 81 islands and islets across the heart of the Pacific Ocean. Made up of volcanic lands covered in mountains and deep forests with giant banyan trees, a visit to Vanuatu cannot be complete without viewing the erupting Mount Yasur Volcano on the Island of Tanna. It is regarded as the world's most accessible active volcano. Its spectacular persistent strombolian activity, consisting of regular small to violent explosions, has been in continuous activity since Captain James Cook observed ash eruptions in 1774. Often referred to as "The lighthouse of the Pacific", the glow of the volcano led Captain Cook to Tanna during the first European journey to the island. Today the volcano is considered a sacred area by members of the John Frum cargo cult, who believe their deity resides in the heart of the volcano.



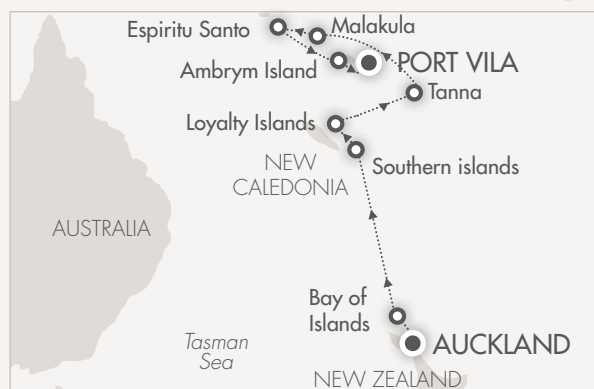
ESPIRITU SANTO

Located in the North-West of the Vanuatu archipelago, the wild island of Espiritu Santo boasts many hidden treasures. It is known for its natural beauty, created by remarkable landscapes, endemic wildlife and white-sand beaches, as well as its historic and cultural past. A former military base, the island is now home to many shipwrecks from the Second World War, but also stunning waterholes in infinite shades of blue and sparkling lagoons where you can find the widest variety of marine life in the archipelago, including sea turtles, angelfish and manatees. When L'AUSTRAL drops anchor here, discover the wonders of this mysterious paradise edged by a lagoon of warm, crystal-clear water.



AUCKLAND • PORT VILA

L'AUSTRAL - From February 18th to March 01st 2017
12 days / 11 nights



DAY ITINERARY

- | | |
|------|--|
| D 1 | Auckland (New Zealand)
Embarkation from 16.00 to 17.00 |
| D 2 | Bay of Islands (New Zealand) |
| D 3 | At sea |
| D 4 | At sea |
| D 5 | Southern Islands (New Caledonia) |
| D 6 | Loyalty Islands (New Caledonia) |
| D 7 | Loyalty Islands (New Caledonia) |
| D 8 | Tanna (Vanuatu) |
| D 9 | South West Bay Malakula (Vanuatu) |
| D 10 | Espiritu Santo (Vanuatu) |
| D 11 | Ambrym Island (Vanuatu) |
| D 12 | Port Vila (Vanuatu). Disembarkation. |

YOUR PRE CRUISE (from Auckland)

- **Discovery of Auckland** (1 day/1 night)
Price per person: **please contact us.**

YOUR POST CRUISE (from Port Vila)

- **From Port Vila to Sydney** (3 days / 2 nights)
Price per person: **please contact us.**

For more information on detailed descriptions of your programs and prices, please consult www.ponant.com or call our travel agents.

SOLOMON ISLANDS, PAPUA & MALAYSIA

Aboard L'Austral, set sail for a one-of-a-kind cruise to the heart of the Asian archipelagos. From Port Vila, capital of Vanuatu, discover the Solomon Islands, a true tropical Eden, to then head for Papua New Guinea, the last refuge of numerous Papuan tribes. Farther on, we will set a course for Malaysia and its lands of legend.



UNESCO

RAJA AMPAT

A country of rare beauty, Indonesia surprises travellers with its landscapes, fauna and culture, which are completely different from one island to the next. During your cruise, we offer you the chance to discover, and even linger, in the Raja Ampat Islands, whose name means "the four kings". Situated in the "Coral Triangle", in the middle of the Molucca Sea, this archipelago was discovered by the British biologist Alfred Russel Wallace in the 19th century. These astonishing tracts of land boast a unique marine biodiversity, considered to be one of the most beautiful on the planet. A heaven for divers, these islands are home to numerous multicolored coral reefs, exuberant micro fauna and many endemic species.



SULAWESI ARCHIPELAGO

Between the Maluku Islands and Borneo, Sulawesi, also known as Celebes, unfurls like an orchid with its many surrounding islands. One look at its shape is enough to understand that here, between inlets and mountains, the sea is omnipresent and bestows on this immense land the charms of a tropical paradise. Long considered as the refuge of the famous Bugis and Makassar pirates, this island chain with its thousand shades of green and blue offers its visitors long beaches of golden sand, high mountain chains and immense terraced paddy fields. The equatorial jungle is home to a wide variety of wildlife such as the nocturnal tarsier and a large number of flamboyantly colored birds. The land of Indigenous people, still living the earth of traditional villages, the Sunda Islands encapsulate all the charms of Indonesia.



PORT VILA • KOTA KINABALU

Aboard L'Austral

From March 01st to 18th 2017 (17 nights)



From 3 890 €

See price list page 58.

HIGHLIGHTS

- Raja Ampat, made up of a multitude of jungle-covered islets, a veritable paradise for divers, and a **UNESCO site**.
- "Expedition" cruise accompanied by our professional naturalist-guides.
- Outings everyday in Zodiac® dinghies.
- Traditional villages and encounters with the ethnic peoples in Papua New Guinea.
- Sandakan, a natural paradise and an encounter with the orang-utans, majestic primates with flamboyant fur.

MALAYSIA

Malaysia is divided into two regions: Peninsular Malaysia and East Malaysia. The first, a long finger of land pointing towards Indonesia, reveals the colorful temples and the hospitable lands that successively welcomed the Chinese, Indian and Malaysian people. The second, to the North of Borneo, offers pristine landscapes and a fascinating return to nature. You will explore authentic villages and a world of legends. With its turquoise sea, magnificent sunsets, mysterious mangroves, wild islands and crystal-clear waters, Malaysia has inspired 20th century literature as the setting for exciting adventures featuring pirates and sultans. Lastly, Malaysia's ancient jungle is the realm of the nomadic indigenous people and its stunning nature is home to unique animals found nowhere else in the world. A trip to Malaysia is the way to discover the roots of our planet, where nature is king and where dense tropical forests, beaches of golden sand and exceptional underwater treasures mingle.



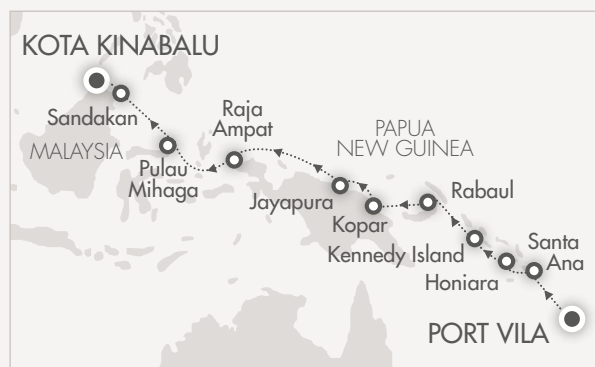
SANDAKAN - BORNEO

Since the beginning of the 20th century, the oldest tropical rainforest in the World has been protected within the national parks of Malaysia. It is at the heart of one of these natural heritage sites, Sandakan National Park in Sabah, that you will set out to explore primitive landscapes and experience a natural and unique adventure. This old growth forest is one of the richest kaleidoscopes of flora and fauna, including the famous orang-utan, whose name means "man of the forest" in Malay. The latter is the only Asian representative of the great apes and is easily recognizable by its long arms and its flamboyant orange fur. Particularly impressive, like their cousins the gorillas and chimpanzees, orang-utans are capable of using tools and learning simple languages through signs.



PORT VILA • KOTA KINABALU

L'AUSTRAL - From March 01st to 18th 2017
18 days / 17 nights



DAY	ITINERARY
D 1	Port Vila (Vanuatu) Embarkation from 16.00 to 17.00
D 2	At sea
D 3	Santa Ana (Solomon Islands)
D 4	Honiara - Mbike (Solomon Islands)
D 5	Kennedy Island (Solomon Islands)
D 6	At sea
D 7	Rabaul (Papua New Guinea)
D 8	At sea
D 9	Kopar Village - Sepik (Papua New Guinea)
D 10	Jayapura (Irian Java, Indonesia)
D 11	At sea
D 12	Wayag Islands - Raja Ampat (Indonesia)
D 13	At sea
D 14	Pulau Mihaga - Bunaken & Tangkoko National Parks (Sulawesi, Indonesia)
D 15	At sea
D 16	Sandakan (Borneo, Malaysia)
D 17	Sandakan (Borneo, Malaysia)
D 18	Kota Kinabalu (Borneo, Malaysia). Disembarkation.

YOUR PRE CRUISE (from Port Vila)

- From Brisbane Port Vila (1 day/1 night)
Price per person: **please contact us.**

YOUR POST CRUISE (from Kota Kinabalu)

- North Borneo Railway and relaxation on the meridian
Price per person: **please contact us.**

For more information on detailed descriptions of your programs and prices, please consult www.ponant.com or call our travel agents.

FROM PHILIPPINES TO JAPANESE COASTS

Leaving from Malaysia, L'Austral will take you to the Philippines, a string of idyllic islands where the white-sand beaches, limestone cliffs and lush mangroves try to outdo one another with their beauty. Then, Japan will welcome you to its magnificent Southern Islands which boast spectacular nature and ancestral culture, including zen gardens and age-old temples.



UNESCO

PUERTO PRINCESA

The capital of Palawan Island, Puerto Princesa owes its name to the legend of Princess Eulalia of Spain and is considered to be a real corner of paradise. During your stopover, we invite you to discover its mysterious subterranean river, which winds its way through a vast cave composed of giant stalactites and stalagmites before throwing itself into the China Sea. Today, the fact that it is subject to tidal influences makes it one of the rarest natural phenomena in the world! Fall under the spell of this strange site, listed as a UNESCO World Heritage Site and recognized as one of the "New 7 Wonders of nature".



MANILA

Founded in 1571 by the famous Spanish conqueror Miguel Lopez de Legazpi, the city of Manila is both the capital and the nerve center of the Philippines. Nestled in the bay bearing the same name, at the mouth of the Pasig River which separates the city in two, Manila is a lively place where traditions exist alongside modern customs, and where centuries-old buildings mingle amidst skyscrapers and shopping centers. During your stopover, we offer you a chance to set off on an unusual visit along Ayala Avenue, better known as "the Wall Street of the Philippines", before discovering Manila's art and history museum. Farther on, the Intramuros district awaits you, with the visit of the city's most ancient building, erected in the 16th century.



KOTA KINABALU • OSAKA

Aboard L'Austral

From March 18th to April 01st 2017 (14 nights)

From 3 200 €

See price list page 56.

HIGHLIGHTS

- **UNESCO Sites:** The underground river of Puerto Princesa; Yakushima Island in Japan; the Shuri-jo castle in Naha on Okinawa Island; the Shinto sanctuary of Itsukushima on Miyajima Island from Hiroshima.
- Manila, the bustling capital of the Philippines and its city center blend of ancient districts and modern skyscrapers.
- The island of Coron, with its lush green landscapes and its exceptional underwater world, with lagoons, steep limestone cliffs and beaches.
- Navigation at the heart of the islands of the Southwest of Japan and discover the Shuri-jo castle and its traditional Japanese architecture.
- A lecturer specialist and passionate will be on board.

TAIWAN - HUALIEN

The island of Taiwan is full of contrasts, with its modern capital in the north, its tall mountain ranges in the east, and its fine-sand beaches in the south. Nicknamed “the beautiful island” by Portuguese sailors, 70% of it is covered in lush, subtropical vegetation. The city of Hualien will be your departure point for discovering the stunning Taroko Gorge, one of the island’s must-see sites. This natural masterpiece, sculpted by the pure waters of the Liwu River, is known for its 1,200 metre-high marble cliffs, from which a unique panorama unfolds. During your stop here, discover the “Eternal Spring Shrine”, a complex made up of several small temples clinging to the side of a mountain and overlooking a glistening waterfall. Then, along the Tunnel of Nine Turns, you will be able to admire the spectacular gorges which wind their way through deep canyons over some twenty kilometres.



UNESCO

YAKUSHIMA

Belonging to Kagoshima Prefecture, Yakushima is a striking island in the south of Japan, covered in forest. Thanks to the pristine and wild nature found here, this highly mountainous terrain has been listed as a UNESCO World Heritage Site. Hikers are very fond of this destination because of the lush vegetation, Mount Miyanoura, the waterfalls and cascades. But without a doubt, the symbol of the island remains its many age-old cedar trees which make up a very dense forest. This park covered in these imposing Japanese cedars is said to have inspired some of the scenes in the animated film *Princess Mononoke* by the director Hayao Miyazaki. On this island, you will also find wildlife including the Japanese macaque, the sika deer, and you might be lucky enough to spot loggerhead turtles or green sea turtles which lay their eggs on the magnificent sandy beaches here.



KOTA KINABALU • OSAKA

L'Austral - From March 18th to April 01st 2017
15 days / 14 nights



DAY ITINERARY

- | DAY | ITINERARY |
|------|--|
| D 1 | Kota Kinabalu (Borneo, Malaysia)
Embarkation from 16.00 to 17.00 |
| D 2 | At sea |
| D 3 | Puerto Princesa (Philippines) |
| D 4 | Coron (Philippines) |
| D 5 | Manila (Philippines) |
| D 6 | At sea |
| D 7 | At sea |
| D 8 | Hualien (Taiwan) |
| D 9 | Ishigaki-Jima (Japan) |
| D 10 | Naha - Okinawa (Japan) |
| D 11 | Oshima (Japan) |
| D 12 | Yakushima (Japan) |
| D 13 | At sea |
| D 14 | Hiroshima (Japan) |
| D 15 | Osaka (Japan). Disembarkation. |

YOUR PRE CRUISE (from Kota Kinabalu)

- Transfer to Kota Kinabalu port.
Price per person: **please contact us.**

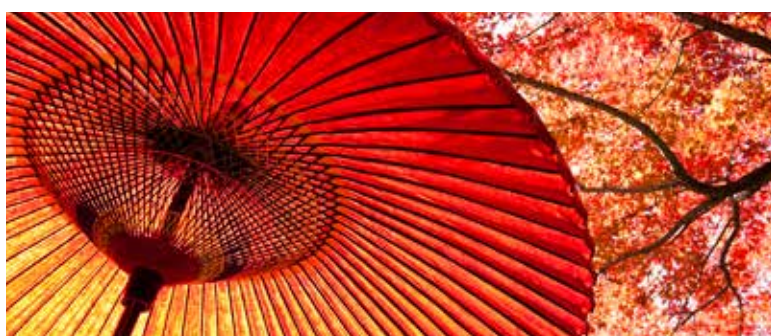
YOUR POST CRUISE (from Osaka)

- Kyoto and Nara, ancient imperial capitals.
Price per person: **please contact us.**

For more information on detailed descriptions of your programs and prices, please consult www.ponant.com or call our travel agents.

THE BEST OF JAPAN

Aboard L'AUSTRAL, set sail for a cruise to the heart of the "Land of the Rising Sun" and its world of contrasts. From Osaka to Maizuru via romantic Kagoshima, during your cruise Japan will open its doors to you and lift the veil on its imperial past, where the history of the Samurais rubs shoulders with the delicateness of Geishas.



TAMANO - OKAYAMA

You will be comfortable ensconced on the outer decks of L'AUSTRAL when you get your first glimpse of the skyline of Okayama, a 16th castle town. Located on the shores of the Seto inland sea, this Japanese city has a remarkable cultural heritage. When you stop here, do not miss the visit to its famous Korakuen Gardens, one of the three essential landscape gardens of Japan. Created in the 18th century, the extraordinary panorama offers visitors vast lawns edged by peaceful lakes, gracious copses and former tea houses. Further on, you can also make an exceptional visit to Okayama's black castle, a feudal construction located on the shores of the Asahi River or discover the small town of Kurashiki and its pleasant merchants' district with a unique architectural style.



UWAJIMA

Lying South-West of Shikoku Island, Uwajima is a small and very picturesque city, nestled deep in the eponymous bay, between the sea and mountains soaring to more than 3,000 metres altitude. Prosperous since the 17th Century under the aegis of the Date family as a "castle city", it is fortunate to possess one of the final twelve castles built during the Edo period. A veritable architectural marvel, its donjon or keep is one of the few to have preserved its original structure and has thus been designated a cultural artefact of national importance. When L'AUSTRAL calls here, do not miss the chance to discover this fascinating city, also renowned for its famous cultured "Doi Pearls", unless you would rather venture further afield and discover the little town of Uchiko, the vestige of traditional rural Japan, and discover its temples and historic districts.



OSAKA • MAIZURU

Aboard L'AUSTRAL

From April 1st to 09th & from April 17th to 25th 2017 (8 nights)

From 2 880 €

See price list page 56.

MAIZURU • OSAKA

Aboard L'AUSTRAL

From Apr. 09th to 17th & Apr. 25th to May 03rd 2017 (8 nights)

From 2 880 €

See price list page 56.

HIGHLIGHTS

- **UNESCO sites:** From Hiroshima, the Miyajima sanctuary and its vermillion « Torii » ; the Bulguska temple and its 7 national treasures from Pusan; the museum of the peace in Hiroshima.
- Sakaiminato and Matsue or medieval Japan and its former Samurai homes.
- Discover Okayama, a former seigniorial city, with its remarkable cultural heritage and its famous "black castle".
- Discovery of the Japanese culture with its several customs and former traditions.
- Lecturer on board, specialist in Art & Japanese History.

PUSAN

If the traditional image of South Korea is of "the Land of the Morning Calm", the cultural slogan is that of a "dynamic country". And culture is considered to be an essential sector for generating an impact on the international stage. Not far from Pusan, the country's second city, Gyeongji is an unmissable stop. The former capital of the Silla dynasty, this 1000-year old town presents a number of vestiges that speak of its prestigious past. This dynasty was one of the oldest in Asia; it brought Buddhism to Korea as well as printing, porcelain and writing. During this port of call you will visit a number of royal tombs buried under the walls of secular temples, demonstrating the cultural and historical importance of this museum-city and will discover the moving Bulguksa Temple on the slopes of Mount Tohamsan. Listed as a UNESCO World Heritage Site and a veritable architectural masterpiece from the Silla Empire, it represents one of the most important sites in Korea for the Buddhist faith.



GEISHA CULTURE

If there is one last enduring myth, it is that of the graceful Geisha. They first appeared around 1660 during the Edo period and quickly became appreciated for their education and refinement in Art and their elegance. Their name comes from the Japanese words Gei (art) and Sha (the person), and they were specially educated in the entertainment arts, such as singing, dancing, poetry, traditional musical instruments, the tea ceremony or conversation, and were used to provide entertainment during important meetings and dinners. The sumptuous handcrafted and brightly colored kimonos, "split peach" chignon and immaculate white face of the Geisha are distinctions that make this icon of femininity truly a living work of art. As professionals in the "Art de Vivre", Geishas play an authentic cultural role and still represent one of the liveliest aspects of Japanese tradition.



OSAKA • MAIZURU

L'Austral - From Apr. 1st to 09th & from Apr. 17th to 25th 2017
9 days / 8 nights



DAY ITINERARY

- D 1 **Osaka** (Japan)
Embarkation from 16.00 to 17.00
- D 2 Tamano - Okayama (Japan)
- D 3 Hiroshima (Japan)
- D 4 Uwajima (Japan)
- D 5 Kagoshima (Japan)
- D 6 Nagasaki (Japan)
- D 7 Pusan (South Korea)
- D 8 Sakaiminato (Japan)
- D 9 **Maizuru** (Japan). Disembarkation.

MAIZURU • OSAKA

L'Austral - From Apr. 09th to 17th &
Apr. 25th to May 03rd 2017
9 days / 8 nights









DAY ITINERARY

- D 1 **Maizuru** (Japan)
Embarkation from 16.00 to 17.00
- D 2 Sakaiminato (Japan)
- D 3 Pusan (South Korea)
- D 4 Nagasaki (Japan)
- D 5 Kagoshima (Japan)
- D 6 Uwajima (Japan)
- D 7 Hiroshima (Japan)
- D 8 Tamano - Okayama (Japan)
- D 9 **Osaka** (Japan). Disembarkation.

SHORE EXCURSIONS IN ASIA

PONANT offers a wide choice of tailor-made excursions to allow you discover the best of Asia's treasures. For more informations, please consult www.ponant.com or call your travel agent.

PORT	COUNTRY	YOUR SHORE EXCURSIONS
CHAN MAY	VIETNAM	 Discover the indescribable charm of the palaces, pagodas and the imposing citadel of the last imperial capital, Hue.
CORON	PHILIPPINES	Discover the lagoons, fine-sand beach and limestone cliffs by local boat.
DA NANG	VIETNAM	 Hoi An, stroll through the attractive narrow streets of this architectural jewel, a result of the harmonious blend of Chinese, Japanese and Western influences.
HA LONG BAY	VIETNAM	 Sail in a local junk boat or kayak in the heart of the engulfed mountains and rocky pitons of the beautiful Ha Long Bay.
HAIPHONG	VIETNAM	 Visit the essential of Hanoi : its superb One Pillar Pagoda, its famous Temple of Literature and the surprising diversity of its 36-streets old district.
HIROSHIMA	JAPAN	 Stroll around the charming island of Miyajima to discover the Shinto sanctuary of Itsukushima and its famous vermillion Torii or visit the Hiroshima Peace Memorial Park and the Atomic Bomb Dome.
HUALIEN	TAIWAN	Discover Taroko National Park, a 19-kilometer long canyon, and its gorges, a breathtaking spectacle of craggy rocks and cascading waters.
ISHIGAKI	JAPAN	Admire the emerald blue Kabira Bay, considered the island's most scenic view with its Yaeyama Palm Tree Groves, or visit the traditional well-preserved Ryuku village.
JAKARTA	INDONESIA	Visit the Old Batavia and the National Museum of Indonesia, considered one of the best museums in South East Asia.
KAGOSHIMA	JAPAN	Discover the majestic and imposing Mount Sakujima, one of the most active volcanoes in Japan, then head for Chiran, "Little Kyoto" renowned for its marvellous well-preserved Samurai Places.
KOPAR VILLAGE	PAPUA NEW GUINEA	Visit this remote village and discover traditional ceremony and Sepik River artefacts.
MANILA	PHILIPPINES	From Manila, visit the Ayala Museum and its gold collection and Manila Intra-Muros, the oldest part of the city, or discover Corregidor Island, essential site of WWII.
MIYAJIMA	JAPAN	 Stroll around the charming island of Miyajima to discover the Shinto sanctuary of Itsukushima and its famous vermillion Torii.
NAGASAKI	JAPAN	Discover Ground Zero, the Atomic Bomb Museum and Nagsaki Museum of History and Culture.
OKINAWA ISLAND	JAPAN	Visit the Chinese-influenced Shuri Castle and the Shikina-en garden.



PORT	COUNTRY	YOUR SHORE EXCURSIONS
PUSAN	SOUTH KOREA	Visit the Buddhist temple Haedong Yonggungsa and the renowned Jagalchi Fishery Market.
SAKAIMINATO	JAPAN	Visit Izumo and its sacred temple, one of the oldest shrines in Japan, or the Matsue Castle and the homes of the Bukeyashiki Samurais.
SANDAKAN	MALAYSIA	From Sandakan, encounter with the Orangutans and the Proboscis monkeys of Borneo.
♥ SEMARANG	INDONESIA	UNESCO Visit the sumptuous Buddhist temple of Borobudur or the Prambanan Temple, a masterpiece of early Hindu culture.
SHANGHAI	CHINA	Visit the Shanghai Museum of ancient Chinese art and discover the classical Chinese gardens of Yu Yuan.
♥ SHANGHAI	CHINA	UNESCO From Shanghai, discover Xian and the legendary terracotta army which guard the tomb of Qinshihuangdi, the first Emperor of China.
SHIMIZU	JAPAN	From Shimizu, observe the majestic Mount Fuji and visit Ryugeji temple and its old-style traditional garden.
SINGAPORE	SINGAPORE	Discover different districts of this cosmopolite and vibrant city such as Little India, China Town and Gardens by the Bay or visit the Asian Civilization Museum.
TAMANO (OKAYAMA)	JAPAN	Visit Kurashiki city developed along the Kurashiki river and the magnificent Korakuen gardens.
TANGKOKO NATIONAL PARK	INDONESIA	Visit Tangkoko National Park in search of the Crested Black Macaque, Spectral tarsier and various bird species.
TOKUSHIMA	JAPAN	Attend to the famous Japanese Awa Odori Dance and visit the Ryozen-ji Temple.
TOKYO	JAPAN	Discover the observation terrace of Roppongi Hills with its 360° view on Tokyo and visit the Edo-Tokyo Museum.
UWAJIMA	JAPAN	Visit the old town of Uchiko, vestige of a traditional rural Japan and fertility shrine.
XIAMEN	CHINA	Discover the charming island of Gulanyu and its colonial buildings or visit the South Putuo Buddhist temple and Xiamen Overseas Chinese Museum.
YAKUSHIMA ISLAND	JAPAN	UNESCO Discover the World Heritage site of Yakushima sheltering a rich flora including, ancient specimens of the sugi (Japanese cedar).



SHORE EXCURSIONS IN THE PACIFIC

PONANT offers a wide choice of tailor-made excursions to allow you discover the best of Pacific's treasures. For more informations, please consult www.ponant.com or call your travel agent.

PORT	COUNTRY	YOUR SHORE EXCURSIONS
AGATS	INDONESIA	Welcome by local tribe, their traditional canoes and war ceremonies.
AKAROA	NEW ZEALAND	Visit a traditional sheep farm with demonstration of sheep shearing and sheepdogs performance.
ATUONA	HIVA OA, MARQUESAS ISLANDS	Discover Paul Gauguin and Jacques Brel's resting places, as well as two museum devoted to their work.
BANDA NEIRA	INDONESIA	From Banda Neira, the global centre for Nutmeg trade, visit Fort Nassau and Fort Belgica, the Governor's house or the VOC church.
BORA BORA	FRENCH POLYNESIA	Snorkelling in the lagoon's crystal-clear waters to observe manta rays and multicoloured fish or discover the island from the sky with an exceptional helicopter flight.
DUNEDIN	NEW ZEALAND	Discover the Otago Peninsula, famous for its magnificent wildlife, and the mythical Taieri Gorge Railway.
ESPIRITU SANTO	VANUATU	Tropical beaches for swimming and snorkelling with a Vanuatu string band or visit World War II historical locations.
FAKARAVA	FRENCH POLYNESIA	Time at leisure to enjoy pristine beaches, crystal-clear waters and fluorescent corals of these UNESCO Biosphere Reserve.
HANA VAVE	FATU HIVA, MARQUESAS ISLANDS	From Hana vave, Grand Panoamic Tour of Omoa, a village where nature is wild and abundant.
HANGA ROA	EASTER ISLAND, CHILE	Discover the impressive Rano Raruka volcano or the magnificent archaeological site of Ahu Tahai and its monumental statues, the enigmatic Moais.
HILO	HAWAII	Discover the Akaka Falls, the tallest interrupted waterfalls in the state of Hawaii, and the Nani Maui botanic gardens, or visit the impressive Kilauea Volcano in the Hawaii Volcanoes Park.
HUAHINE	FRENCH POLYNESIA	Discover the fascinating sites of the island in a snorkel or safari adventure or hike along Mata'irea Hill to the archaeological sites of the village of Maeva.



PORT	COUNTRY	YOUR SHORE EXCURSIONS
KOMODO	INDONESIA	Meet the Komodo Dragons.
LAHAINA	HAWAII	Visit the Iao Valley Gardens, discover the craters and waterfalls in Haleakala National Park through the famous scenic of Hana Road and lunch at the Maui Tropical Plantation.
MOOREA	FRENCH POLYNESIA	Discover Moorea deep valleys and mountains by 4-wheel drive and observe wild dolphins.
NAPIER	NEW ZEALAND	Visit the art-deco town of Napier and meet Maori warriors or go to Cape Kidnappers and its astonishing gannet colony.
PUERTO PRINCESA	PHILIPPINES	Discover the Underground River of Puerto Princesa, listed as UNESCO World Heritage site.
RABAUL	PAPUA NEW GUINEA	Discover the active volcano Mount Tavurvur or a famous World War II site, before taking in a show of fire dancers "Baining".
RAIATEA	FRENCH POLYNESIA	Visit a pearl farm and go down the Faaroa River in kayak.
RANGIROA	FRENCH POLYNESIA	From Rangiroa, discover turquoise lagoons by snorkelling or on a glassbottom boat.
SANTA ANA	SALOMON ISLANDS	Discover the traditional life of this village and attend warrior ceremonies and cultural performances.
TAURANGA	NEW ZEALAND	Hike to the heart of the Wai-O-Tapu Thermal Wonderland with geysers and the surprising geothermal feature of Champagne Pool.
WELLINGTON	NEW ZEALAND	Visit the innovative and interactive Museum of New Zealand "Te Papa Tongarewa".



L'AUSTRAL & LE SOLÉAL



With their fluid lines, their size perfectly adapted to sailing to the heart of isolated reserves and archipelagos in Asia and the Pacific, their appearance enhanced by two glass arches that let in light and provide water views: *L'AUSTRAL* and *LE SOLÉAL* reflect the spirit of a subtly revisited nautical theme.

On board, irrespective of which cruise you choose, you will always find the same exceptional conditions of comfort, service and elegance that have forged PONANT's reputation. Whether you are enjoying breakfast among friends with the horizon as special guest, a sun-kissed lunch on one of our outside decks, or a delicious dinner in the elegant and intimate setting of our fine dining restaurants, you will appreciate the French touch that naturally gives pride of place to discreet service and excellent cuisine.

To ensure a tailored cruise where you can enjoy total peace of mind, our beauty spa, run in partnership with the French beauty institute SOTHY'S Paris™, invites you to enjoy deep relaxation, and a butler service is also available to passengers travelling in one of the suites on Deck 6.

And because we are convinced that a responsible approach is a must in our quest for excellence, PONANT made the decision to equip its sisterships with outstanding eco-friendly equipment. As a result, all ships bear the international "Clean ship" label.

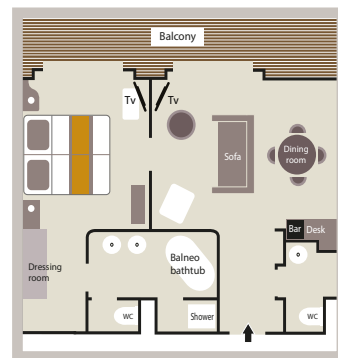
Welcome on board.



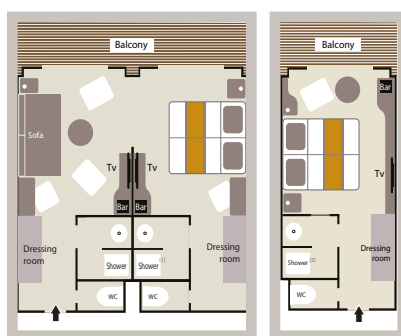


Staterooms & Decks

OWNER'S SUITE (484 sq.ft + 97 sq.ft. private balcony)



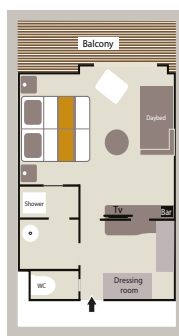
20 PRESTIGE SUITES (398 sq.ft. + 86 sq.ft. private balcony)



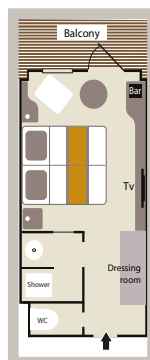
(1) Prestige Suites aboard Le Soléal : 1 shower and 1 bathtub.

(2) Prestige Staterooms aboard Le Soléal, Decks 5 & 6 : 1 shower or 1 bathtub, depends on staterooms.

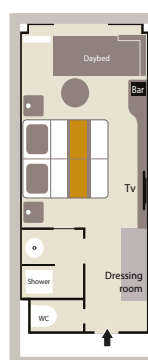
3 DELUXE SUITES (290 sq.ft. + 54 sq.ft. private balcony)

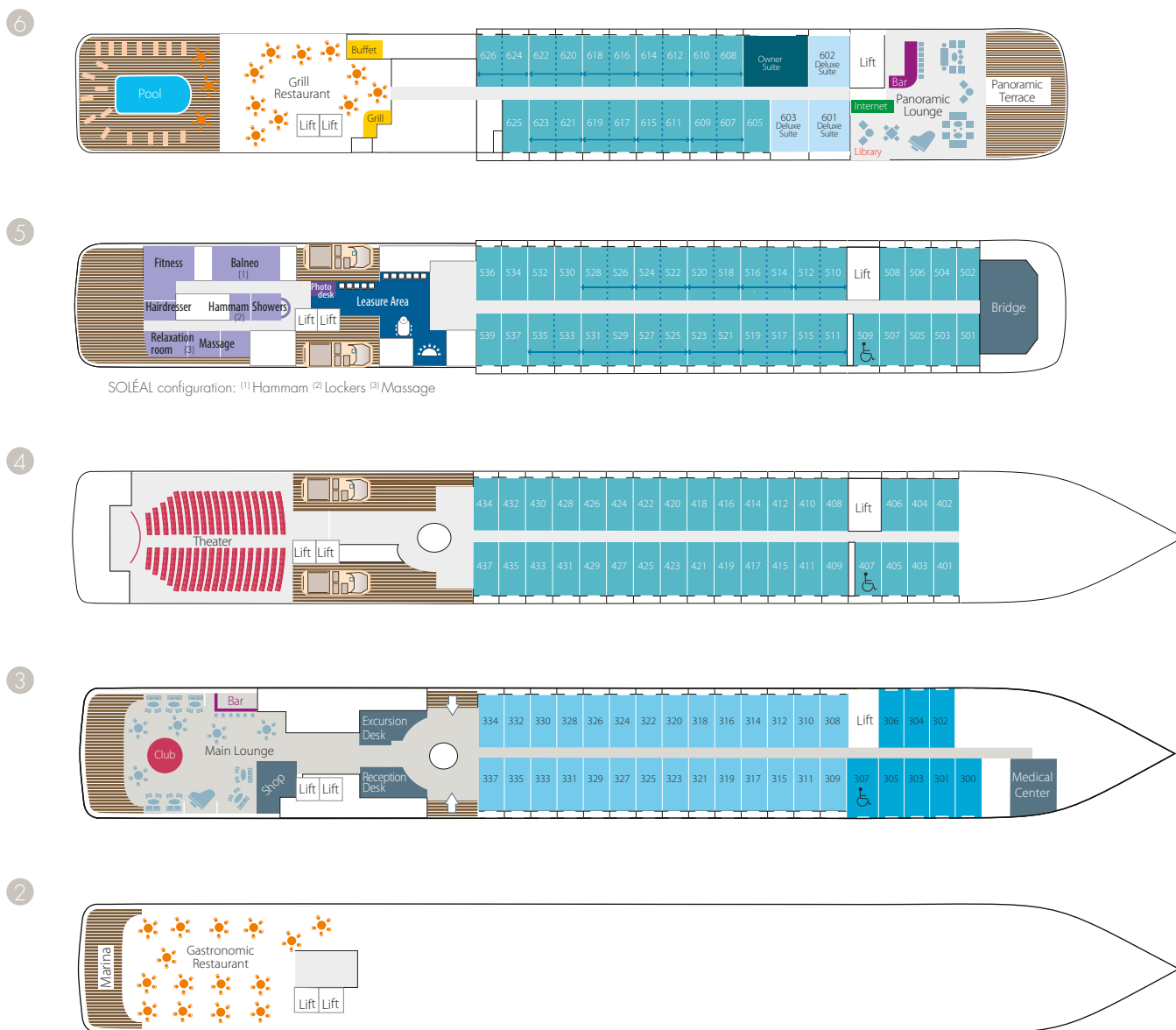


28 DELUXE STATEROOMS (200 sq.ft. + 43 sq.ft. private balcony)



8 SUPERIOR STATEROOMS (226 sq.ft.)





- 2 Gastronomic Restaurant - Marina
- 3 28 Deluxe Staterooms with private balcony
- 8 Superior Staterooms - Main Lounge
- Shop - Reception desk - Excursion desk - Medical center
- 4 35 Prestige Staterooms with private balcony
- Theater
- 5 37 Prestige Staterooms with private balcony
(with 22 Prestige Staterooms convertible into 11 Prestige suites) - Fitness - Beauty Corner Sothys Paris™ : Hammam, cloak rooms, Massage, Hairdresser, Relaxation room - Leisure Area - Image & photo corner - Bridge
- 6 Owner's suite - 3 Deluxe Suites with private balcony - 20 Prestige Staterooms with private balcony (with 18 Prestige Staterooms convertible into 9 Prestige suites) - Pool - Grill Restaurant - Internet station - Library - Panoramic lounge - Panoramic terrace

- Owner's Suite
Deck 6
- Prestige Suite
Deck 6 - 5
- Deluxe Suite
Deck 6
- Prestige Stateroom
Deck 4 - 5 - 6
- Deluxe Stateroom
Deck 3
- Superior Stateroom
Deck 3

- Length 466 ft
- Beam 59 ft
- Draft 15,3 ft
- Cruising Speed 16 knots
- Ice class 1 C
- Classification Bureau Veritas
- Flag French
- Guest Decks 6
- Guest capacity (double occupancy) up to 264 PAX
- Normal Crew Size 140
- Fleet of expedition Zodiacs® (Mark V HD)
- Gross tonnage 10 944 UMS
- Electric motors 2 x 2300 KW
- Installed power 6 400 KW
- Construction Fincantieri-Ancona-Italy

ASIA PRICE LIST*

CRUISE FARE

OCTOBER 05TH 2016
9 nights on board

KANAZAWA • OSAKA
L'Austral



Superior Stateroom	3 810 €	2 660 €
Deluxe Stateroom	4 190 €	2 930 €
Prestige Stateroom - Deck 4	4 490 €	3 140 €
Prestige Stateroom - Deck 5	4 710 €	3 290 €
Prestige Stateroom - Deck 6	4 950 €	3 460 €
Deluxe Suite	6 430 €	4 500 €
Prestige Suite - Deck 5	7 070 €	4 940 €
Prestige Suite - Deck 6	7 420 €	5 190 €
Owner Suite	9 650 €	-
3 rd adult Pass. in a Superior Stateroom	1 910 €	1 330 €
3 rd adult Passenger in a Prestige Suite	3 530 €	2 470 €
4 th adult Passenger in a Prestige Suite	3 530 €	2 470 €
Children 8-11 sharing parents ⁽¹⁾	-	-
Single Occupancy Supplement ⁽¹⁾	From + 30%	
Safety and port taxes ⁽¹⁾	450 €	

OCTOBER 14TH 2016
12 nights on board

OSAKA • HONG KONG
L'Austral



Superior Stateroom	5 080 €	3 660 €
Deluxe Stateroom	5 590 €	4 020 €
Prestige Stateroom - Deck 4	5 980 €	4 290 €
Prestige Stateroom - Deck 5	6 280 €	4 500 €
Prestige Stateroom - Deck 6	6 600 €	4 720 €
Deluxe Suite	8 570 €	6 100 €
Prestige Suite - Deck 5	9 420 €	6 700 €
Prestige Suite - Deck 6	9 890 €	7 030 €
Owner Suite	12 860 €	-
3 rd adult Pass. in a Superior Stateroom	2 540 €	1 880 €
3 rd adult Passenger in a Prestige Suite	4 710 €	3 400 €
4 th adult Passenger in a Prestige Suite	4 710 €	3 400 €
Children 8-11 sharing parents ⁽¹⁾	-	-
Single Occupancy Supplement ⁽¹⁾	From + 30%	
Safety and port taxes ⁽¹⁾	600 €	

OCTOBER 26TH & NOVEMBER 13TH 2016
9 nights on board

HONG KONG • HO CHI MINH
L'Austral



Superior Stateroom	3 260 €	2 280 €
Deluxe Stateroom	3 590 €	2 510 €
Prestige Stateroom - Deck 4	3 840 €	2 680 €
Prestige Stateroom - Deck 5	4 030 €	2 820 €
Prestige Stateroom - Deck 6	4 240 €	2 960 €
Deluxe Suite	5 510 €	3 850 €
Prestige Suite - Deck 5	6 050 €	4 230 €
Prestige Suite - Deck 6	6 350 €	4 440 €
Owner Suite	8 260 €	-
3 rd adult Pass. in a Superior Stateroom	1 630 €	1 140 €
3 rd adult Passenger in a Prestige Suite	3 030 €	2 120 €
4 th adult Passenger in a Prestige Suite	3 030 €	2 120 €
Children 8-11 sharing parents ⁽¹⁾	-	-
Single Occupancy Supplement ⁽¹⁾	From + 30%	
Safety and port taxes ⁽¹⁾	450 €	

APRIL 01ST & 17TH 2017
8 nights on board

OSAKA • MAIZURU
L'Austral



Superior Stateroom	4 120 €	2 880 €
Deluxe Stateroom	4 540 €	3 170 €
Prestige Stateroom - Deck 4	4 850 €	3 390 €
Prestige Stateroom - Deck 5	5 100 €	3 570 €
Prestige Stateroom - Deck 6	5 350 €	3 740 €
Deluxe Suite	6 960 €	4 870 €
Prestige Suite - Deck 5	10 190 €	7 130 €
Prestige Suite - Deck 6	10 700 €	7 490 €
Owner Suite	13 920 €	-
3 rd adult Pass. in a Superior Stateroom	2 060 €	1 440 €
3 rd adult Passenger in a Prestige Suite	5 100 €	3 570 €
4 th adult Passenger in a Prestige Suite	5 100 €	3 570 €
Children 8-11 sharing parents ⁽¹⁾	-	-
Single Occupancy Supplement ⁽¹⁾	From + 85%	
Safety and port taxes ⁽¹⁾	400 €	

APRIL 09TH & 25TH 2017
8 nights on board

MAIZURU • OSAKA
L'Austral



Superior Stateroom	4 120 €	2 880 €
Deluxe Stateroom	4 540 €	3 170 €
Prestige Stateroom - Deck 4	4 850 €	3 390 €
Prestige Stateroom - Deck 5	5 100 €	3 570 €
Prestige Stateroom - Deck 6	5 350 €	3 740 €
Deluxe Suite	6 960 €	4 870 €
Prestige Suite - Deck 5	10 190 €	7 130 €
Prestige Suite - Deck 6	10 700 €	7 490 €
Owner Suite	13 920 €	-
3 rd adult Pass. in a Superior Stateroom	2 060 €	1 440 €
3 rd adult Passenger in a Prestige Suite	5 100 €	3 570 €
4 th adult Passenger in a Prestige Suite	5 100 €	3 570 €
Children 8-11 sharing parents ⁽¹⁾	-	-
Single Occupancy Supplement ⁽¹⁾	From + 85%	
Safety and port taxes ⁽¹⁾	400 €	

*The detailed itineraries and the conditions of application of the cruise prices shown in this PONANT « ASIA & PACIFIC - WINTER CRUISES 2016 - 2017 » catalogue are subject to the [General Information](#) and [Terms and Conditions](#) shown in page 62. Also discover our [Insurance](#) offer page 66. **The free single supplement is subject to availability at the time of booking. The cruises are only provided as an example. The cruises for which the offer is valid are subject to change. For more information, please viewed at www.ponant.com

NOVEMBER 04TH 2016
9 nights on board

HO CHI MINH • HONG KONG
L'AUSTRAL



Superior Stateroom	3 260 €	2 280 €
Deluxe Stateroom	3 590 €	2 510 €
Prestige Stateroom - Deck 4	3 840 €	2 680 €
Prestige Stateroom - Deck 5	4 030 €	2 820 €
Prestige Stateroom - Deck 6	4 240 €	2 960 €
Deluxe Suite	5 510 €	3 850 €
Prestige Suite - Deck 5	6 050 €	4 230 €
Prestige Suite - Deck 6	6 350 €	4 440 €
Owner Suite	8 260 €	-
3 rd adult Pass. in a Superior Stateroom	1 630 €	1 140 €
3 rd adult Passenger in a Prestige Suite	3 030 €	2 120 €
4 th adult Passenger in a Prestige Suite	3 030 €	2 120 €
Children 8-11 sharing parents ⁽¹⁾	-	-
Single Occupancy Supplement ⁽¹⁾	From + 30%	
Safety and port taxes ⁽¹⁾	450 €	

NOVEMBER 22ND 2016
10 nights on board

HO CHI MINH • BALI
L'AUSTRAL



Superior Stateroom	3 630 €	2 540 €
Deluxe Stateroom	3 990 €	2 790 €
Prestige Stateroom - Deck 4	4 270 €	2 980 €
Prestige Stateroom - Deck 5	4 480 €	3 130 €
Prestige Stateroom - Deck 6	4 710 €	3 290 €
Deluxe Suite	6 120 €	4 280 €
Prestige Suite - Deck 5	6 720 €	4 700 €
Prestige Suite - Deck 6	7 060 €	4 940 €
Owner Suite	9 180 €	-
3 rd adult Pass. in a Superior Stateroom	1 810 €	1 260 €
3 rd adult Passenger in a Prestige Suite	3 360 €	2 350 €
4 th adult Passenger in a Prestige Suite	3 360 €	2 350 €
Children 8-11 sharing parents ⁽¹⁾	-	-
Single Occupancy Supplement ⁽¹⁾	From + 0%	
Safety and port taxes ⁽¹⁾	500 €	

MARCH 18TH 2017
14 nights on board

KOTA KINABALU • OSAKA
L'AUSTRAL



Superior Stateroom	4 580 €	3 200 €
Deluxe Stateroom	5 040 €	3 520 €
Prestige Stateroom - Deck 4	5 390 €	3 770 €
Prestige Stateroom - Deck 5	5 660 €	3 960 €
Prestige Stateroom - Deck 6	5 950 €	4 160 €
Deluxe Suite	7 730 €	5 410 €
Prestige Suite - Deck 5	8 490 €	5 940 €
Prestige Suite - Deck 6	8 920 €	6 240 €
Owner Suite	11 590 €	-
3 rd adult Pass. in a Superior Stateroom	2 290 €	1 600 €
3 rd adult Passenger in a Prestige Suite	4 250 €	2 970 €
4 th adult Passenger in a Prestige Suite	4 250 €	2 970 €
Children 8-11 sharing parents ⁽¹⁾	-	-
Single Occupancy Supplement ⁽¹⁾	From + 0%	
Safety and port taxes ⁽¹⁾	700 €	



*The detailed itineraries and the conditions of application of the cruise prices shown in this PONANT « ASIA & PACIFIC - WINTER CRUISES 2016 - 2017 » catalogue are subject to the [General Information](#) and [Terms and Conditions](#) shown in page 62. Also discover our [Insurance](#) offer page 66. **The free single supplement is subject to availability at the time of booking. The cruises are only provided as an example. The cruises for which the offer is valid are subject to change. For more information, please viewed at www.ponant.com

PACIFIC PRICE LIST*

CRUISE FARE

SEPTEMBER 12TH 2016

14 nights on board

HONOLULU • PAPEETE
LE SOLÉAL



Superior Stateroom	4 580 €	3 200 €
Deluxe Stateroom	5 040 €	3 520 €
Prestige Stateroom - Deck 4	5 390 €	3 770 €
Prestige Stateroom - Deck 5	5 660 €	3 960 €
Prestige Stateroom - Deck 6	5 950 €	4 160 €
Deluxe Suite	7 730 €	5 410 €
Prestige Suite - Deck 5	8 490 €	5 940 €
Prestige Suite - Deck 6	8 920 €	6 240 €
Owner Suite	11 590 €	-
3 rd adult Pass. in a Superior Stateroom	2 290 €	1 600 €
3 rd adult Passenger in a Prestige Suite	4 250 €	2 970 €
4 th adult Passenger in a Prestige Suite	4 250 €	2 970 €
Children 8-11 sharing parents ⁽¹⁾	-	-
Single Occupancy Supplement ⁽¹⁾	From + 0%	
Safety and port taxes ⁽¹⁾	700 €	

SEPTEMBER 26TH 2016

10 nights on board

PAPEETE • PAPEETE
LE SOLÉAL



Superior Stateroom	3 600 €	2 520 €
Deluxe Stateroom	3 960 €	2 770 €
Prestige Stateroom - Deck 4	4 240 €	2 960 €
Prestige Stateroom - Deck 5	4 450 €	3 110 €
Prestige Stateroom - Deck 6	4 670 €	3 260 €
Deluxe Suite	6 070 €	4 240 €
Prestige Suite - Deck 5	8 900 €	6 230 €
Prestige Suite - Deck 6	9 340 €	6 530 €
Owner Suite	12 150 €	-
3 rd adult Pass. in a Superior Stateroom	1 800 €	1 260 €
3 rd adult Passenger in a Prestige Suite	4 450 €	3 110 €
4 th adult Passenger in a Prestige Suite	4 450 €	3 110 €
Children 8-11 sharing parents ⁽¹⁾	-	-
Single Occupancy Supplement ⁽¹⁾	From + 30%	
Safety and port taxes ⁽¹⁾	500 €	

OCTOBER 06TH 2016

13 nights on board

PAPEETE • HANGAROA
LE SOLÉAL



Superior Stateroom	4 250 €	2 970 €
Deluxe Stateroom	4 680 €	3 270 €
Prestige Stateroom - Deck 4	5 010 €	3 500 €
Prestige Stateroom - Deck 5	5 260 €	3 680 €
Prestige Stateroom - Deck 6	5 520 €	3 860 €
Deluxe Suite	6 630 €	4 640 €
Prestige Suite - Deck 5	6 840 €	4 780 €
Prestige Suite - Deck 6	7 180 €	5 020 €
Owner Suite	9 330 €	-
3 rd adult Pass. in a Superior Stateroom	2 130 €	1 490 €
3 rd adult Passenger in a Prestige Suite	3 420 €	2 390 €
4 th adult Passenger in a Prestige Suite	3 420 €	2 390 €
Children 8-11 sharing parents ⁽¹⁾	-	-
Single Occupancy Supplement ⁽¹⁾	From + 0%	
Safety and port taxes ⁽¹⁾	650 €	

JANUARY 07TH 2017

15 nights on board

AKAROA • MILFORD SOUND
L'AUSTRAL



Superior Stateroom	8 290 €	5 800 €
Deluxe Stateroom	9 120 €	6 380 €
Prestige Stateroom - Deck 4	9 760 €	6 830 €
Prestige Stateroom - Deck 5	10 250 €	7 170 €
Prestige Stateroom - Deck 6	10 760 €	7 530 €
Deluxe Suite	13 980 €	9 780 €
Prestige Suite - Deck 5	15 370 €	10 750 €
Prestige Suite - Deck 6	16 140 €	11 290 €
Owner Suite	20 980 €	-
3 rd adult Pass. in a Superior Stateroom	4 150 €	2 900 €
3 rd adult Passenger in a Prestige Suite	7 680 €	5 370 €
4 th adult Passenger in a Prestige Suite	7 680 €	5 370 €
Children 8-11 sharing parents ⁽¹⁾	-	-
Single Occupancy Supplement ⁽¹⁾	From + 30%	
Safety and port taxes ⁽¹⁾	750 €	

JANUARY 22ND 2017

9 nights on board

MILFORD SOUND • AUCKLAND
L'AUSTRAL



Superior Stateroom	3 780 €	2 720 €
Deluxe Stateroom	4 160 €	2 990 €
Prestige Stateroom - Deck 4	4 450 €	3 190 €
Prestige Stateroom - Deck 5	4 670 €	3 350 €
Prestige Stateroom - Deck 6	4 910 €	3 510 €
Deluxe Suite	6 380 €	4 540 €
Prestige Suite - Deck 5	7 010 €	4 980 €
Prestige Suite - Deck 6	7 360 €	5 230 €
Owner Suite	9 570 €	-
3 rd adult Pass. in a Superior Stateroom	1 890 €	1 400 €
3 rd adult Passenger in a Prestige Suite	3 500 €	2 530 €
4 th adult Passenger in a Prestige Suite	3 500 €	2 530 €
Children 8-11 sharing parents ⁽¹⁾	-	-
Single Occupancy Supplement ⁽¹⁾	From + 30%	
Safety and port taxes ⁽¹⁾	450 €	

JANUARY 31ST 2017

9 nights on board

AUCKLAND • MILFORD SOUND
L'AUSTRAL



Superior Stateroom	3 780 €	2 720 €
Deluxe Stateroom	4 160 €	2 990 €
Prestige Stateroom - Deck 4	4 450 €	3 190 €
Prestige Stateroom - Deck 5	4 670 €	3 350 €
Prestige Stateroom - Deck 6	4 910 €	3 510 €
Deluxe Suite	6 380 €	4 540 €
Prestige Suite - Deck 5	7 010 €	4 980 €
Prestige Suite - Deck 6	7 360 €	5 230 €
Owner Suite	9 570 €	-
3 rd adult Pass. in a Superior Stateroom	1 890 €	1 400 €
3 rd adult Passenger in a Prestige Suite	3 500 €	2 530 €
4 th adult Passenger in a Prestige Suite	3 500 €	2 530 €
Children 8-11 sharing parents ⁽¹⁾	-	-
Single Occupancy Supplement ⁽¹⁾	From + 30%	
Safety and port taxes ⁽¹⁾	450 €	

*The detailed itineraries and the conditions of application of the cruise prices shown in this PONANT « ASIA & PACIFIC - WINTER CRUISES 2016 - 2017 » catalogue are subject to the [General Information](#) and [Terms and Conditions](#) shown in page 62. Also discover our [Insurance](#) offer page 66. **The free single supplement is subject to availability at the time of booking. The cruises are only provided as an example. The cruises for which the offer is valid are subject to change. For more information, please viewed at www.ponant.com

DECEMBER 02ND 2016
14 nights on board

BALI • CAIRNS
L'AUSTRAL



Superior Stateroom	5 080 €	3 550 €
Deluxe Stateroom	5 590 €	3 910 €
Prestige Stateroom - Deck 4	5 980 €	4 180 €
Prestige Stateroom - Deck 5	6 280 €	4 390 €
Prestige Stateroom - Deck 6	6 590 €	4 610 €
Deluxe Suite	8 570 €	5 990 €
Prestige Suite - Deck 5	9 410 €	6 580 €
Prestige Suite - Deck 6	9 880 €	6 910 €
Owner Suite	12 850 €	-
3 rd adult Pass. in a Superior Stateroom	2 540 €	1 770 €
3 rd adult Passenger in a Prestige Suite	4 710 €	3 290 €
4 th adult Passenger in a Prestige Suite	4 710 €	3 290 €
Children 8-11 sharing parents ^(*)	-	-
Single Occupancy Supplement ^(**)	From + 0%	
Safety and port taxes ^(*)	700 €	

DECEMBER 16TH 2016
12 nights on board

CAIRNS • PORT VILA
L'AUSTRAL



Superior Stateroom	4 350 €	3 040 €
Deluxe Stateroom	4 790 €	3 350 €
Prestige Stateroom - Deck 4	5 120 €	3 580 €
Prestige Stateroom - Deck 5	5 380 €	3 760 €
Prestige Stateroom - Deck 6	5 650 €	3 950 €
Deluxe Suite	7 340 €	5 130 €
Prestige Suite - Deck 5	8 070 €	5 640 €
Prestige Suite - Deck 6	8 470 €	5 920 €
Owner Suite	11 010 €	-
3 rd adult Pass. in a Superior Stateroom	2 180 €	1 520 €
3 rd adult Passenger in a Prestige Suite	4 030 €	2 820 €
4 th adult Passenger in a Prestige Suite	4 030 €	2 820 €
Children 8-11 sharing parents ^(*)	-	-
Single Occupancy Supplement ^(**)	From + 0%	
Safety and port taxes ^(*)	600 €	

DECEMBRE 28TH 2016
10 nights on board

PORT VILA • AKAROA
L'AUSTRAL



Superior Stateroom	4 380 €	3 060 €
Deluxe Stateroom	4 820 €	3 370 €
Prestige Stateroom - Deck 4	5 160 €	3 610 €
Prestige Stateroom - Deck 5	5 420 €	3 790 €
Prestige Stateroom - Deck 6	5 690 €	3 980 €
Deluxe Suite	7 400 €	5 180 €
Prestige Suite - Deck 5	8 130 €	5 690 €
Prestige Suite - Deck 6	8 530 €	5 970 €
Owner Suite	11 090 €	-
3 rd adult Pass. in a Superior Stateroom	2 190 €	1 530 €
3 rd adult Passenger in a Prestige Suite	4 060 €	2 840 €
4 th adult Passenger in a Prestige Suite	4 060 €	2 840 €
Children 8-11 sharing parents ^(*)	-	-
Single Occupancy Supplement ^(**)	From + 0%	
Safety and port taxes ^(*)	500 €	

FEBRUARY 09TH 2017
9 nights on board

MILFORD SOUND • AUCKLAND
L'AUSTRAL



Superior Stateroom	3 780 €	2 720 €
Deluxe Stateroom	4 160 €	2 990 €
Prestige Stateroom - Deck 4	4 450 €	3 190 €
Prestige Stateroom - Deck 5	4 670 €	3 350 €
Prestige Stateroom - Deck 6	4 910 €	3 510 €
Deluxe Suite	6 380 €	4 540 €
Prestige Suite - Deck 5	7 010 €	4 980 €
Prestige Suite - Deck 6	7 360 €	5 230 €
Owner Suite	9 570 €	-
3 rd adult Pass. in a Superior Stateroom	1 890 €	1 400 €
3 rd adult Passenger in a Prestige Suite	3 500 €	2 530 €
4 th adult Passenger in a Prestige Suite	3 500 €	2 530 €
Children 8-11 sharing parents ^(*)	-	-
Single Occupancy Supplement ^(**)	From + 30%	
Safety and port taxes ^(*)	450 €	

FEBRUARY 18TH 2017
11 nights on board

AUCKLAND • PORT VILA
L'AUSTRAL



Superior Stateroom	3 600 €	2 520 €
Deluxe Stateroom	3 960 €	2 770 €
Prestige Stateroom - Deck 4	4 240 €	2 960 €
Prestige Stateroom - Deck 5	4 450 €	3 110 €
Prestige Stateroom - Deck 6	4 670 €	3 260 €
Deluxe Suite	6 070 €	4 240 €
Prestige Suite - Deck 5	6 670 €	4 660 €
Prestige Suite - Deck 6	7 010 €	4 900 €
Owner Suite	9 110 €	-
3 rd adult Pass. in a Superior Stateroom	1 800 €	1 260 €
3 rd adult Passenger in a Prestige Suite	3 340 €	2 330 €
4 th adult Passenger in a Prestige Suite	3 340 €	2 330 €
Children 8-11 sharing parents ^(*)	-	-
Single Occupancy Supplement ^(**)	From + 0%	
Safety and port taxes ^(*)	550 €	

MARCH 01ST 2017
17 nights on board

PORT VILA • KOTA KINABALU
L'AUSTRAL



Superior Stateroom	5 560 €	3 890 €
Deluxe Stateroom	6 120 €	4 280 €
Prestige Stateroom - Deck 4	6 550 €	4 580 €
Prestige Stateroom - Deck 5	6 880 €	4 810 €
Prestige Stateroom - Deck 6	7 220 €	5 050 €
Deluxe Suite	9 390 €	6 570 €
Prestige Suite - Deck 5	10 310 €	7 210 €
Prestige Suite - Deck 6	10 830 €	7 580 €
Owner Suite	14 080 €	-
3 rd adult Pass. in a Superior Stateroom	2 780 €	1 940 €
3 rd adult Passenger in a Prestige Suite	5 160 €	3 610 €
4 th adult Passenger in a Prestige Suite	5 160 €	3 610 €
Children 8-11 sharing parents ^(*)	-	-
Single Occupancy Supplement ^(**)	From + 0%	
Safety and port taxes ^(*)	850 €	

*The detailed itineraries and the conditions of application of the cruise prices shown in this PONANT « ASIA & PACIFIC - WINTER CRUISES 2016 - 2017 » catalogue are subject to the [General Information](#) and [Terms and Conditions](#) shown in page 62. Also discover our [Insurance](#) offer page 66. **The free single supplement is subject to availability at the time of booking. The cruises are only provided as an example. The cruises for which the offer is valid are subject to change. For more information, please viewed at www.ponant.com

FORMALITIES ASIA

POUR TOUTES LES CROISIÈRES

The below information is current but subject to change at any time without advance notice from government authorities. Please consult your respective government agencies for visa and health information.

Passport valid for at least six (6) months beyond the completion of your trip. Passport must contain at least two completely clear, blank, unused visa pages for each visa required, not including any amendment pages. Visa pages with stains or ink from other pages in the passport are not usable. Guests who deviate from the scheduled embarkation or disembarkation port should research the foreign entry requirements for the port country. Due to government regulations, regrettably PONANT will have to deny boarding to any guest who fails to obtain the appropriate travel documentation for this trip.

SPECIFIC FORMALITIES

L'Austral: OSAKA • HONG KONG FROM OCTOBER 14TH 2016 - PAGE 24 ^{(1) (2)}

L'Austral: HONG KONG • HO CHI MINH FROM OCTOBER 26TH 2016 & NOVEMBER 13TH 2016 - PAGE 26 ^{(2) (3)}

L'Austral: HO CHI MINH • HONG KONG FROM NOVEMBER 04TH 2016 - PAGE 26 ^{(2) (4)}

L'Austral: HO CHI MINH • BALI FROM NOVEMBER 22ND 2016 - PAGE 28 ^{(4) (5)}

(1) China: mandatory visa to be obtained before the start of the cruise and valid for the entire duration of your stay within China. A copy of your visa must be sent to PONANT at least 30 days prior to cruise date.

(2) Hong Kong: a visa is not necessary for Hong Kong. However, should you plan on staying in China before or after your cruise; you will need to obtain an individual visa for China.

(3) Vietnam: entry and exit visa issued and charged onboard (65€ to date, subject to change), this visa will allow you to exit Vietnam up to 30 days after disembarkation.

(4) Vietnam: an individual visa must be obtained prior to your cruise.

(5) Indonesia: visa delivered and charged onboard (45€ subject to change). This visa (valid of 30 days) is valid for disembarking passengers as well as for passengers continuing onto the next cruise.

L'Austral: PORT VILA • KOTA KINABALU FROM MARCH 01ST 2017 - PAGE 42

Vanuatu Islands: no visa necessary

Solomon Islands: visa delivered onboard

Indonesia: visa delivered and charged onboard (45€ subject to change)

Australia: Should you travel to Australia before and/or after your cruise, you will need to obtain an Electronic Travel Authority (ETA) before your arrival in Australia. For more information, please visit www.immi.gov.au. Carriers should be aware that there will not be any physical evidence in your passport. Australian customs regulations are very strict, especially for the import of food items such as fresh food (even sealed), fruits, eggs, meat, plants, vegetables, seeds, grains. Fur and feathers are also forbidden. We highly recommend you consult this website for further details: www.customs.gov.au

It is recommended that you contact your health professional for any specific medical advice relating to travel through these regions, including advice on Malaria prevention, dengue fever as well as Ross River fever, tetanus, hepatitis and typhoid. In addition, it is mandatory to return the medical questionnaire, provided at time of booking, between 90 and 45 days prior to departure.

IMPORTANT INFORMATIONS

- **Visas:** Before departure, please check carefully that your visas are valid for the right date and time spent in the countries in order to avoid unpleasant situations.
- **Sightseeing:** Some places can only be visited on foot. Also, sites may have stairs or require you to take off shoes.
- **Currency:** Plan to have US dollars in small notes as they are easier to use outside of large cities.
- **Medication:** If you have a medical treatment, do not forget your prescription.
- **Coaches:** road conditions are poor in certain countries. Timings are unpredictable due to heavy traffic conditions. The comfort of coaches cannot be compared to that of international vehicles and often lack suspension.
- **Guides:** PONANT is aware that the quality of guides is of utmost importance and puts all efforts in place to secure the best local guides available. Note that guides in Asia often have heavy accents. Several of our calls visit small and isolated communities where resources (transportation and guides) are scarce, resulting in higher prices.

As you will be visiting some very remote and isolated parts of the world, resources (transportation and guides) are scarce and may not be of the standards you are used to. We ask for your patience and understanding during these truly unique experiences as we share the lifestyle and cultures of these seldom visited people and places.

FORMALITIES PACIFIC

POUR TOUTES LES CROISIÈRES

The below information is current but subject to change at any time without advance notice from government authorities. Please consult your respective government agencies for visa and health information.

Passport valid for at least six (6) months beyond the completion of your trip. Passport must contain at least two completely clear, blank, unused visa pages for each visa required, not including any amendment pages. Visa pages with stains or ink from other pages in the passport are not usable. Guests who deviate from the scheduled embarkation or disembarkation port should research the foreign entry requirements for the port country. Due to government regulations, regrettably PONANT will have to deny boarding to any guest who fails to obtain the appropriate travel documentation for this trip.

SPECIFIC FORMALITIES

LE SOLÉAL: HONOLULU • PAPEETE FROM SEPTEMBER 12TH 2016 - PAGE 16

USA: Visa may be required. Please contact USA consulate website for details.

LE SOLÉAL : PAPEETE • PAPEETE FROM SEPTEMBER 26TH 2016 - PAGE 18

LE SOLÉAL : PAPEETE • HANGA ROA FROM OCTOBER 06TH 2016 - PAGE 20

USA: Should your flight transit via the USA, a visa or ESTA may be required. Please contact USA consulate website for details

L'Austral : BALI • CAIRNS FROM DECEMBER 02ND 2016 - PAGE 30 ^{(1) (2) (7)}

L'Austral : CAIRNS • PORT VILA FROM DECEMBER 16TH 2016 - PAGE 32 ^{(2) (4) (5) (7)}

L'Austral : PORT VILA • AKAROA FROM DECEMBER 28TH 2016 - PAGE 34 ^{(3) (5) (7)}

L'Austral : AKAROA • MILFORD SOUND FROM JANUARY 07TH 2017 - PAGE 36 ⁽⁶⁾

L'Austral : AUCKLAND • PORT VILA FROM FEBRUARY 18TH 2017 - PAGE 40 ^{(3) (5) (7)}

(1) Indonesia The visa (35USD subject to change) is necessary, which can be obtained at the airport in Bali. We recommend having the exact change as credit cards are not accepted. Depending on your flight arrival time you might experience some waiting time.

(2) Australia: An Electronic Travel Authority (ETA) must be obtained before your arrival in Australia. For more information, please visit www.immi.gov.au. Carriers should be aware that there will not be any physical evidence in your passport. Australian customs regulations are very strict, especially for the import of food items such as fresh food (even sealed), fruits, eggs, meat, plants, vegetables, seeds, grains. Fur and feathers are also forbidden. We highly recommend you consult this website for further details: www.customs.gov.au.

(3) Australia: Should you travel to Australia before and/or after your cruise, you will need to obtain an Electronic Travel Authority (ETA) before your arrival in Australia. For more information, please visit www.immi.gov.au. Carriers should be aware that there will not be any physical evidence in your passport. Australian customs regulations are very strict, especially for the import of food items such as fresh food (even sealed), fruits, eggs, meat, plants, vegetables, seeds, grains. Fur and feathers are also forbidden. We highly recommend you consult this website for further details: www.customs.gov.au.

(4) Solomon Islands: Visa delivered onboard.

(5) Vanuatu Islands: no visa required.

(6) Sub Antarctic Islands: It is important to note that during this entire voyage, you will visit areas where medical infrastructure is totally inexistent and emergency evacuation impossible.

(7) It is recommended that you contact your health professional for any specific medical advice relating to travel through these regions, including advice on Malaria prevention and dengue fever. In addition, it is mandatory to return the medical questionnaire, provided at time of booking, between 90 and 45 days prior to departure.

IMPORTANT INFORMATIONS

- **Australia:** Australian customs regulations are very strict, especially for the import of food items such as fresh food (even sealed), fruits, eggs, meat, plants, vegetables, seeds, grains. Fur and feathers are also forbidden. We highly recommend you consult this website for further details: www.customs.gov.au.
- **Visas:** Before departure, please check carefully that your visas are valid for the right date and time spent in the countries in order to avoid unpleasant situations.
- **Sightseeing:** Some places can only be visited on foot. Also, sites may have stairs or require you to take off shoes.
- **Currency:** Plan to have US dollars in small notes as they are easier to use outside of large cities.
- **Medication:** If you have a medical treatment, do not forget your prescription.
- **Coaches:** road conditions are poor in certain countries. Timings are unpredictable due to heavy traffic conditions. The comfort of coaches cannot be compared to that of international vehicles and often lack suspension.
- **Guides:** PONANT is aware that the quality of guides is of utmost importance and puts all efforts in place to secure the best local guides available. Note that guides in Asia often have heavy accents. Several of our calls visit small and isolated communities where resources (transportation and guides) are scarce, resulting in higher prices.

GENERAL IMPORTANT INFORMATION

1. - The rates of our cruises are per person and include the following:

- All meals while on board the ship (from dinner on the day of embarkation to breakfast on the day of disembarkation)
- Captain's welcome cocktail and gala dinner
- "Open Bar" (pouring wines, house champagne, alcohol except premium brands...list available upon request)
- Evening entertainment and events
- Room service 24h (special selection)
- Highly qualified bilingual French/English expedition team on all cruises identified by "expedition"
- English speaking lecturer on selected sailings identified by "lecturer on board" logo
- Water sports activities (except scuba diving) using the ship's equipment, when permitted by local authorities and confirmed by ship Master according to safety and sea conditions onsite
- Highly experienced bilingual (French-English) Expedition team for all cruises identified with "Expedition" logo.
- Park entry fees into protected areas
- Complimentary bus transfer from Milford Sound to Queenstown and v.v. for the following cruises ; Akaroa – Milford Sound; Milford Sound – Auckland and vice versa.

2. - "Cruise, Flights and Transfers" program rates don't include:

- Airport taxes
- Port and safety taxes and crew gratuities
- Luggage handling
- Any ground services before and/or after the cruise other than the ones mentioned in each "Cruise, Flights & Transfers" package and for which details are available upon request. Don't hesitate to contact your travel agent or consult www.ponant.com
- Optional Spa package to be booked prior your departure; Please ask for more information
- Beverages other than the ones mentioned
- Laundry services, hair salon and à la carte Spa treatments
- Personal expenses, on board medical consultations and drug prescriptions
- Cancellation/luggage/assistance/repatriation/medical insurance(s)
- Visa expenses and/or immigration reciprocity taxes if applicable

Please do not forget to bring your medical certificates when it is required to participate in an expedition cruise.

3-Ground services

3.1 Services included in "Cruise , flights and Transfers packages:

Packages "Cruise, Flights and Transfers" include ground services before and/or after the cruise as described in documents available 10 months prior departure of each cruise and available on www.ponant.com . Services to the port of departure, transfers to the ship, including, as applicable, hotel room and restaurant bookings or guided tours, are performed by independent suppliers who are not employees of Compagnie du Ponant. In this respect, Compagnie du Ponant acts only as an agent and shall not be held liable for said services or for the acts or omissions of sub-contractors or other contractors. The passenger agrees that Compagnie du Ponant acts as agent and/or trustee for any person including ground and maritime agents and subcontractors, who provide any service forming, or in connection with, any part of the cruise.

Our Cruise and Flights package programs are made in connection with Compagnie du Ponant selected regular or private charter flights. Final timings and schedule of the day by day program will be communicated with the cruise ticket. All our programs are made in economy class and according to number of seats available. If the class is not available anymore, we will suggest, depending on the availability, extra seats with a supplement. On International flights, check-in luggage is limited to 23kg/50lbs and 8kg/11 to 17lbs per person for carry-on luggage (besides airlines' frequent flyer advantages). On regular domestic or intercontinental flights, check-in luggage limits are between 15 and 20 kg/33 to 44lbs and 5 to 8kg/11 to 17lbs per person for carry-on. On Compagnie du Ponant Private charter flights, check-in luggage is limited to 20 kg/44lbs and 5kg/11lbs maximum per person as carry-on. We thank you for taking these restrictions into account. Airline carriers charge for extra weight and sometimes refuse, for strict security reasons, to check-in overweight and oversized luggage. Compagnie du Ponant and the airline carriers waive all liability for luggage with extra weight that is refused at the check-in.

3.2 - Ground activities included during expedition cruises itself:

It is understood that taking part to activities proposed during expedition cruising certain risks and dangers including but not limited to activities in remote areas, animals, forces of nature, accident and illness. Compagnie du Ponant, organizer of this expedition, does not undertake and does not have any responsibility for the accuracy of any information it provides or to determine or assure the suitability of any participant to expedition activities proposed in general or as to a particular person. Compagnie du Ponant has no duty to provide medical assistance or advice to any activity participant. Each individual participating in any expedition activity accepts responsibility for making their own determinations as to the suitability of the activity and for their own safety, conduct and well-being and agrees to participate solely at their own risk. Being informed, each participant in any expedition activities, assume the risk associated with these activities and will hold Compagnie du Ponant, its officers, directors, crew and expedition team members as well as hike leaders harmless from and defend them against any and all liability, actions, suits, claims and demands which could arise from any of the Compagnie du Ponant's activities and from any loss or injury which may sustain as a result of my participation in any of these activities.

It is essential to be properly equipped and not to forget to bring you your binoculars for a good fauna observation during Nature outings.

3.3 - Pre and post-cruise programs and pre bookable tours

Pre and Post-cruise programs (as detailed on www.ponant.com), pre bookable tours and shore excursions are performed by independent suppliers who are not employees of Compagnie du Ponant. In this respect, Compagnie du Ponant acts only as an agent and shall not be held liable for said services or for the acts or omissions of sub-contractors or other contractors. The passenger agrees that Compagnie du Ponant acts as agent and/or trustee for any person including ground and maritime agents and subcontractors, who provide any service forming, or in connection with, any part of the cruise.

Hotel accommodations are based on 4 and 5-star rated hotels. Official check-in time is 4pm, check-out time is 11am unless early check-in or late check-out supplement are paid.

3.4 - Shore excursions

Unless otherwise noted, shore excursions are sold and charged on board and are ruled by general conditions that apply to the contract signed with the local tour operator and the relevant national regulations. The passenger agrees that CDP acts as agent and/or trustee for any person including ground and maritime agents and subcontractors, who provide any service in connection with any part of the cruise.

Excursions can involve activities that may not suit persons with disabilities. Prices are only given as an indication and may change. Before departure, you will receive a tour program detailing the excursions on offer with the latest rates. Five months before cruise departure, shore excursions can also be viewed on www.ponant.com. Shore excursions are currently only bookable onboard. In the event of an excursion being cancelled due to a technical reason, shortage of participants or a case of force majeure, the client will not be eligible for any compensation. Please note that you will not be reimbursed for excursions if you cancel after registration. Any meals offered during excursions are simple and should not be compared to the standards on board the ship.

4 - Rates and Savings

Please find the rates for each expedition program on our website www.ponant.com. Ponant Bonus saving is not applicable on taxes. Tax amounts are subject to change and in addition to the package rates (Except for All Inclusive packages presented in US\$)

4-1: Public rates:

They are the reference rates of the cruise applicable for the validity period of the brochure. Public rates are per person and based on double occupancy.

4.2: Ponant Bonus Fares

PONANT BONUS is a special savings program off published cruise-only rates for selected voyages. Ponant Bonus is the guaranteed best price you can obtain on the day you make your reservation. It can save you up to 30% off the public rates. Ponant Bonus fares are capacity controlled, subject to availability and may change at any time without notice. Ponant Bonus could decrease or be closed for specific stateroom and suite categories or entire cruises. Contact your travel agent or refer to www.ponant.com to determine the Ponant Bonus available at the time of booking your cruise (s). Ponant Bonus may not be combinable with other promotional offers or onboard cruise credits.

4.3: "Guaranteed" cabin

Depending on cruise occupancy at time of booking, a "guaranteed" cabin in Deluxe category – deck 3 may be proposed. This means that the booking is made in the Deluxe category – deck 3 without cabin number assignment. Cabin assignment will be made at Compagnie du Ponant's discretion and can change at all times up to embarkation. Once cabin number is assigned no changes are accepted. The advantage of this option is to maybe benefit of a higher cabin category without additional surcharge. In all events, the minimum category chosen at time of reservation is guaranteed.

4-4: Other savings:

Consecutive cruise offers: *(Reduction relates to the port/port fare excluding port taxes. The offer is only available on selected cruises. Offer cannot be combined with any other discounts or offers.)

- **On all our cruises:** -10% on all consecutive cruise

- **Prolong the pleasure with several consecutive cruises ⁽¹⁾:**

- When this cruise is in 2nd position get a -20% discount
- When this cruise is in 3rd position get a -30% discount
- When this cruise is in 4th position get a -40% discount

(1)Reduction does not apply to the first cruise and relates to the port/port fare excluding port taxes. The offer is only available on selected cruises. Validity of the fare subject to availability. Please, contact us or visit www.ponant.com

- **Ponant Yacht Club Grand Admiral Members:** -5% off the cruise-only rate, port taxes excluded
- **Family & Friends:** -5% off the cruise-only rate, port taxes excluded, for all bookings of 5 adults or more, booked at the same time and all sailing together on the same cruise
- **Honeymoon:** see details on www.ponant.com
- **Wedding Anniversary (every 5th year):** see details on www.ponant.com
- **On board Reservations:** -5% off the cruise-only rate, port taxes excluded for each new cruise booked with our onboard staff

NOTE: These discounts/benefits are not combinable with any offer other than those mentioned above. They are not applicable on Ocean Voyages (programs not qualifying for Ponant Yacht Club Benefits) If you are entitled to several discounts, the value of the second discount is calculated from the revised rate obtained after the deduction of the first discount and so on.

5-Children

Children under 3 years of age and women who are over 6 months pregnant are not authorized to sail. Children between 3 and 8 years old are accepted subject to agreement at the time of booking. If accepted, a liability waiver will have to be completed and returned to Compagnie du Ponant to validate your booking. On expedition cruises, children must be able to disembark/embarc by zodiac without assistance and be able to understand and follow safety instructions. Therefore disembarkation is submitted to Captain's and Expedition Leader's decision depending on weather conditions and landing sites. In all cases, children and young adults, once on board, are the entire and total responsibility of their parents or guardians.

Children from 8 to 11 years old sharing with 2 adults and Teenagers from 12 to 17 years old, sharing with 1 or 2 adults benefit from special discounts on cruise-only fares; please contact us for more details.

6-Mobility

L'Austral, LE BORÉAL, LE SOLÉAL and LE LYRIAL have three cabins which are specially adapted for disabled guests (ADA Norms). Nevertheless, for safety reasons, all passengers must either be fully mobile or must be accompanied by a travelling companion fit and able to provide all necessary assistance during the voyage. Please note that animals (including service and/or comfort animals) are not permitted aboard. Persons who are not fully mobile, with physical disabilities or other handicaps requiring special treatment or assistance, including persons who use a wheelchair, must advise Compagnie du Ponant in writing of the nature of such conditions when making a reservation request and by all means before the signature of booking form. Compagnie du Ponant reserves the right to refuse passage to anyone who has failed to notify them of such limited mobility, disabilities or need of assistance, whose medical conditions is not compatible with security rules and requirements specific to the navigation area, or who, in the Compagnie du Ponant's opinion is unfit for travel. Please note that landings are done using zodiacs making them very difficult or even impossible for passengers with limited mobility. Each landing will be subject to Captain and Expedition Leader approval.

Please note that the sailing vessel LE PONANT is not accessible for those with limited mobility or using a wheelchair.

7- Others

- Women who are pregnant must inform us by mail or email before their cruise and submit a medical certificate confirming their ability to travel. Women who are more than 5 months pregnant at the time of embarkation or during their cruise are not permitted to embark.
- All our vessels are non-smoking with the exception of designated areas on outside decks.
- Animals (including service and/or comfort animals) are not permitted aboard.
- Any specific health issue, if known, must be reported in writing to our medical department (medical@ponant.com). There is a specific and mandatory medical questionnaire to be completed by your physician between 90 and 45 days prior to your cruise. The completed questionnaire must be returned by each participant to an Antarctica program, at the latest 40 days prior departure. Any medical questionnaire completed before this time period will be invalid. Should the information on the medical questionnaire not correspond to the reality, embarkation might be refused at the port of embarkation without any recourse. Any passenger who has not returned the completed compulsory medical form will be denied boarding.
- Due to exceptional nature of these programs, sites names are given as an indication only. Final route will be confirmed daily by Captain and Expedition Leader depending on ice conditions, weather forecasts with priority being given to passenger safety.
- Euro, US Dollar currencies and credit cards (VISA, MASTERCARD and AMEX) are accepted on board. Note there are no ATMs onboard the ships or money exchange. Onboard purchases may be charged back to the guest's stateroom.
- Ship master retains the right to change the itineraries as per article 4.2 of the cruise ticket.
- Detailed terms and conditions are available on www.ponant.com and upon request.



TERMS AND CONDITIONS

These are extracts of the terms and conditions which will apply to your cruise. Please read them carefully. Complete terms and conditions are available upon request. Attention is particularly drawn to the exemption and limitation of liability in favor of Compagnie Du Ponant / Compagnie Du Ponant USA LLC, Compagnie du Ponant Pty Limited Australia / Compagnie du Ponant HK Limited / Compagnie du Ponant Shanghai Information Consulting Co., Ltd. hereinafter referred as "the Company" or "CDP". These terms and conditions are subject to change without notice.

1- Transferability:

A reservation for one of the programs listed in this brochure is only valid for date, cruise program and passenger(s) names listed on the written confirmation received upon reservation and on the cruise ticket provided with travel documents. Passenger may transfer the ticket to a third party, who shall fill the same conditions as the passenger to perform all purchased services, as long as the agreement has not rendered any effect. The transferor and/or transferee must settle any fees which result, and inform the Company and the seller of this decision by registered letter with acknowledgement of receipt no later than 90 days prior day of embarkation. In the event where the passenger transfers his/her ticket without informing the Company and the seller as per the terms described above, this ticket transfer will be invalid and the ticket will be cancelled without any possible refund.

2- Payment Schedule:

In order to secure a booking, the guest is required to pay 25% of total cruise price upon confirmation. The final 75% is due no later than 90 days prior to sailing/departure. All reservations are subject to cancellation fees if payments are not received by the due date. Your full payment or acceptance of a ticket constitutes agreement to these Terms and Conditions. General and Important information presented in this brochure as part of the Passenger Ticket Contract. Any revisions to the above payment plan must be in writing and approved by CDP.

3- Revisions & modifications:

Guests who deviate from the scheduled embarkation or disembarkation port should inform the Company in advance to obtain her agreement. Once a booking is secured by a deposit, all revisions and/or changes which occurred less than 90 days before departure are subject to an administration change fee that has to be paid by the passenger as stated hereunder in "Cancellation & Refunds". The passenger who decides to shorten his journey cannot claim any refund for any unused services. The passenger, who fails to present himself in time for his departure or relinquishes booked services included in the program for any reason, cannot claim any refund.

4 - Terms and conditions for, and cost of rebooking and/or cancelling a trip:

If the traveler is forced to either rebook or cancel their trip, they will need to inform Compagnie du Ponant via any means that enables them to obtain an acknowledgement of receipt (fax, email, or registered letter with acknowledgement of receipt) as soon as the event resulting in this rebooking or cancellation occurs. The date on which the document was sent will be the date on which the rebooking and/or cancellation fees will be invoiced.

4-1 Term and conditions for rebooking a cruise:

Requests to rebook a cruise will only be accepted subject to Compagnie du Ponant being informed within a timeframe of at least 90 days before the departure of the cruise, via the means set out above. This timeframe is increased to 150 days for the Expedition Cruise program. The rebooking terms and conditions exclusively involve the option for the traveler to replace a port-to-port cruise with another port-to-port cruise with Compagnie du Ponant. In the event of a switch to a higher-value travel package, and subject to compliance with the terms and conditions set out in Points 4a to 4d, no alteration fees will be applied to the cruise service, or to the other services, (e.g. air travel). The alteration fees will amount to the expenses already incurred by Compagnie du Ponant:

- 4.a: The passenger may rebook their cruise subject to replacing it with a more expensive cruise than the one that is being replaced;
- 4.b: The departure date of the cruise booked as a replacement must fall within a maximum timeframe of 12 months as from the date when the rebooking request was made
- 4.c: The reservation and payment of the deposit for the replacement cruise must be made at the same time as the rebooking request.
- 4.d: The replacement cruise selected will become non-exchangeable and nonrefundable from that point; the passenger may only cancel it.

4-2 Specific terms and conditions for a rebooking request from Ponant Yacht Club High Admirals:

In the event of the 1st rebooking of a tourism package: no fees will be applied to the cruise service, as long as the request is made within a timeframe of at least 90 days before the departure of the cruise. This timeframe is extended to 150 days for the Expedition Cruise programs. Any rebooking request aside from the rebooking of the 1st cruise will be subject to the specific allocation conditions set out in Article 4.1 above. In the case of other services (e.g. air travel), the rebooking fees will amount to the expenses already incurred by Compagnie du Ponant

4.3 : Terms and conditions for rebooking a cruise:

No switch may be made to a travel package with a lower value within a timeframe of 90 days (150 days for Expedition Cruises) before the departure of the cruise: cancellation fees will apply, and are set out in Article 4.4 below.

4.4 : Cancellation fees:

The cancellation fee schedules below apply to all the services booked with Compagnie du Ponant that are not specified as "non-exchangeable, and nonrefundable". The cancellation fees will amount to 100% of the value of the services in that case.

Expedition Cruise programs:

- From the registration confirmation date up to 91 days before departure: 25% of the amount of the trip;
- Between 90 days and 76 days before departure: 50% of the amount of the trip;
- Between 75 days and 61 days before departure: 75% of the amount of the trip;
- Less than 61 days before departure: 100% of the amount of the trip.

For other cruise programs:

- From the registration confirmation date up to 91 days before departure: 10% of the amount of the trip;
- Between 90 days and 61 days before departure: 25% of the amount of the trip;
- Between 60 days and 46 days before departure: 50% of the amount of the trip;
- Between 45 days and 31 days before departure: 75% of the amount of the trip;
- Less than 30 days before departure: 100% of the amount of the trip.

5- Formalities and health information

Before booking one of these journeys or trips offered in this brochure, each passenger is personally responsible for complying with the required legal regulations. All passengers must carry a valid passport, as well as the visas and vaccination certificates which may be required at the airport, at the port of arrival and departure. Company du Ponant waives all liability for not complying with the required legal regulations regarding immigration, customs or sanitary documents required before departure and during his trip. Please note that Australian, Canadian, and U.S. citizens entering/exiting Argentina must have a valid passport and pay a Reciprocity Tax. Currently, the fee will have to be paid by credit card online before arriving in Argentina: Please consult www.migraciones.gov.ar or www.provinciapagos.com.ar. At time of print, the fees were as follow (subject to change without notice) Australia: USD 100 - (multiple entry valid for one year). Canada: USD 75 - (one entry) or USD 150 - (multiple entry valid for 5 years from first entry). USA: USD 140 - (one entry).

Any guest who fails to obtain the appropriate travel documentation to board the airplane or access to the ship is responsible and may not claim any compensation or refund of his trip or services.

The information given in this brochure is current but subject to change at any time without advance notice from government authorities. Please consult respective government agencies up to the departure date.

6- Air transport and Flight Package information

All airline tickets are provided in the electronic ticket format. It is imperative to ensure that the first names and surnames communicated are those mentioned on the relevant passport, as they cannot be changed later. Any mistakes, or requests to alter the name, will require the purchase of a new ticket. Compagnie du Ponant will provide passengers, at the time they make their booking, with the name of the airline or airline carriers which have either already been selected or are likely to be selected. Compagnie du Ponant undertakes to inform passengers, before departure, of any changes to the identity of the airline or airline carriers as soon as they are known.

The schedules and type of transportation listed are provided by the transportation companies at the time this brochure was being produced. They are a guideline to the moment of departure and are subject to change for all kinds of reasons (additional stops added, weather conditions, air traffic control authorization, strikes...etc.).

In accordance with the Warsaw and Montreal Convention, timings and routes as well as departure/destination airports are not a contractual element of the transportation ticket. Under these conditions, Compagnie du Ponant cannot be held responsible for changes that are beyond its control.

Changes to the original travel program may be the result, in particular, of technical faults, weather conditions, political reasons, delays or cancellations, strikes, additional stops, changes to aircraft or routes, etc. Under no circumstances can these incidences be attributed to Compagnie du Ponant or any compensation made whatsoever. If a client wishes to abandon his journey, he will be liable to the cruise cancellation fees indicated above.

The airline carrier's responsibility, in the event of damages, complaints or claims of any kind, is limited to the carriage of passengers and their luggage by air, within the terms and conditions stipulated on the tickets and by the airline companies themselves. Compagnie du Ponant will not reimburse any expenses (taxis, meals, hotels, etc.), when the passenger is under the responsibility of the airline company. The consequences of accidents/incidents occurring when travelling by air are governed by the Warsaw and Montreal Convention, or by the local regulations governing national transportation in the country concerned.

Our Cruise and Flights package programs are made in connection with Compagnie du Ponant selected regular or private charter flights. Final timings and schedule of the day by day program will be communicated with the cruise ticket. All our programs are made in economy class and according to number of seats available. If the class is not available anymore, we will suggest, depending on the availability, extra seats with a supplement.

On International flights, check-in luggage is limited to 23kg/50lbs and 8kg/11 to 17lbs per person for carry-on luggage (besides airlines' frequent flyer advantages). On regular domestic or intercontinental flights, check-in luggage limits are between 15 and 20 kg/33 to 44lbs and 5 to 8kg/11lbs per person for carry-on. On Compagnie du Ponant Private charter flights, check-in luggage is limited to 23 kg/50lbs and 5kg/11lbs maximum per person as carry-on. We thank you for taking these restrictions into account. Airline carriers charge for extra weight and sometimes refuse, for strict security reasons, to check-in overweight and oversized luggage. Compagnie du Ponant and the airline carriers waive all liability for luggage with extra weight that is refused at the check-in.

7- Boarding and transportation terms and conditions

a) Embarkation: Guests must report for boarding in the conditions set by the cruise ticket (details of cruise ticket document are available upon request). Passengers are responsible for having received all medical inoculations necessary for the voyage and having their cruise ticket, a valid passport, visas and other documents mandatory for the scheduled ports of call and disembarkation. If a passenger does not have proper documents he/she will not be allowed to embark. Boarding the ship automatically makes the passenger subject to the application of the provisions hereafter, as well as the general conditions concerning the travel program, which they are familiar with and which they have accepted.

b) Visas, Passport and Health information: At the time of boarding, all guests must have a passport valid for six months following disembarkation as well as necessary visas and vaccination certificates which may be required in destination ports where the ship calls. CDP accepts no responsibility for obtaining required visas or for advising guests of visa or other immigration requirements. Please consult relevant authorities or a visa service to determine accurately if any visas, health certificates, or vaccinations are required. If incorrect documents are obtained, guests will be unable to participate in particular shore excursions and may be denied boarding and/or disembark in certain port of calls/countries. The Company and/or master of the ship are entitled to refuse embarkation or to prevent disembarkation of any passengers who do not show the documents allowing them to disembark at the scheduled destination or stopover ports. Every passenger is personally responsible for compliance with the statutory and regulatory provisions in force before departure.

Note: Due to airline security measures, your passport name must match your airline ticket name or you may be denied boarding.

c) Health and Security: If it appears to the Company and/or the Master of the ship that a passenger is for any reason whatsoever unfit to travel or likely to endanger his health or safety or impair the comfort of others on board or seems likely to be refused permission to land at any port or to render the Company liable for his maintenance,

support or repatriation, the Company or the Master of the ship shall be entitled at any time to take any of the following courses as appear appropriate to them, namely a) To refuse to embark or disembark the passenger at any particular port; b) To disembark him at any port; c) To transfer him from one berth to another; d) To confine him to one cabin of the ship's medical center; e) Through the ship's doctor and/or his staff to administer any drug, medication or other substance or to admit and/or confine the passenger to the hospital, or any similar institution at any port provided that the ship's doctor considers it necessary.

Health care, medical expenses and drugs on land or aboard the ship shall be paid by passengers. In Antarctica, please remember that there is no medical structure available before several days at sea. A mandatory medical questionnaire is provided and has to be properly filled by you and your personal physician between 90 and 75 days prior departure and returned to our dedicated Medical Department no later than 60 days prior departure. Any guest not having provided this mandatory document completed will not be authorized to embark without possible recourse. Please note that given the inaccessibility of Antarctica, we recommend you choose your travel insurance company very carefully as in case of evacuation; all kind of expenses will have to be paid up front.

L'Austral, le Boréal, le Soléal and le Lyrial have three cabins which are specially adapted for disabled guests (ADA Norms). Nevertheless, for safety reasons, all passengers must either be fully mobile or must be accompanied by a travelling companion fit and able to provide all necessary assistance during the voyage. Please note that animals (including service and/or comfort animals) are not permitted aboard. Persons who are not fully mobile, with physical disabilities or other handicaps requiring special treatment or assistance, including persons who use a wheelchair, must advise Compagnie du Ponant in writing of the nature of such conditions when making a reservation request and by all means before the signature of booking form. Compagnie du Ponant reserves the right to refuse passage to anyone who has failed to notify them of such limited mobility, disabilities or need of assistance, whose medical conditions is not compatible with security rules and requirements specific to the navigation area, or who, in the Compagnie du Ponant's opinion is unfit for travel. Please note that landings are done using zodiacs making them very difficult or even impossible for passengers with limited mobility. Each landing will be subject to Captain and Expedition Leader approval.

Passengers accept civil and criminal liability for all damages caused to Compagnie du Ponant, other passengers or third parties by their actions. Passengers are individually and solely responsible for the payment of any and all fines or penalties inflicted by competent authorities on account of their own acts.

d) Itinerary changes/alterations/cancellation of a trip: Arrival and departure times are given as an indication only. The Company cannot guarantee coincidence with corresponding schedules (plane, train...) notably due to modification of the program duration initially planned, which cannot incur any compensation, as the Company cannot be held liable for indirect damages. CDP reserves the right to withdraw and/or cancel a sailing to make changes in the itinerary whenever, in its sole judgment, or in the judgment of the vessel owner or operator, conditions warrant it.

In the event of adverse meteorological conditions or adverse political or social conditions in the country of a port of call or for any other fact that may jeopardize the safety of guests or of the ship, or in the event of orders by public authorities, the Company may change the itinerary or ports of call or destination, delay, end or cancel the trip, divert the ship, tow or be towed, transfer guests and their luggage aboard any other means of transportation, even when this results in an increase or a shortening of the advertised program. The Company does not warrant that these will correspond to the time schedule of connecting flights or transfers (e.g. planes or trains...), due to the fact that the initially scheduled trip duration may be altered. No indemnification shall be due on this account, as the Company is not liable for indirect damages.

Under any circumstances, the ship may provide assistance to any person or goods at sea, and will not be liable for the consequences of a modification to the cruise program for this reason.

In the case of external events beyond the control of the Company or for any reason regarding the safety of travelers or the ship or due to charter of the ship or due to an insufficient number of participants, according to that which is provided for by the terms and conditions of the trip program, the Company may cancel the cruise and must inform the passengers by registered letter with acknowledgement of receipt or email, fax with proof of delivery.

Cruise & Flight and Transfer Programs indicated in the brochure "COMPAGNIE DU PONANT- WINTER CRUISES 2016-2017" are subject to a minimum of participants. Compagnie du Ponant may cancel any cruise program up to 21 days before departure if the minimum of guests registered is under or equal to 50% of the ship capacity (200 guests).

In the event of an alteration of the contract by the Company after boarding the ship, passengers shall in any case not be entitled to any indemnification other than refund for unperformed services for which no replacement was provided. In addition, passengers may be requested to pay extra monies for services rendered under such circumstances and for the costs of living aboard the ship in the event that the duration of the trip is extended.

Compagnie du Ponant may give passengers cabins other than those initially planned.

e) Luggage: Each guest can bring aboard a reasonable amount of clothing and personal effects without charge, subject to airline restrictions. Hand luggage or cabin luggage and personal effects shall comply with allowances in the terms and conditions provided for in the program. Luggage must be distinctly labeled with the passenger's full name, the name of the ship and cabin number.

All passengers are prohibited from transporting merchandise in their luggage whose content may threaten the health of other passengers, damage or contaminate their luggage on the vessel. It is notably forbidden to board or pack animals or inflammable, explosive, corrosive, dangerous, scented or leaking materials in your luggage. Failure to comply with these rules will lead to payment of a lump sum penalty provided for by law.

The passenger will in any case be responsible for any injury, loss or damages suffered due to the presence of these objects, and shall ensure that the Company is not sued due to such events. Such objects may at any time and in any place be disembarked, destroyed, thrown into the sea or made safe by the Company without any compensation. It is also prohibited to load objects as luggage other than those intended for personal use by the passenger, and notably goods in general, and objects whose importing is prohibited or which are not compliant with customs or police regulations. The passenger is responsible for all consequences, expenses, damages and penalties resulting therefrom, and the Company, in such cases, shall not be held liable for loss or damages.

Passengers must look after their personal luggage during the entire duration of the stay aboard the ship as well as during embarking, transfer and disembarking operations. Compagnie du Ponant waives all liability for luggage left unattended by passengers and for which passengers have not taken the necessary precautions against theft, loss or damage. Specifically, the Company shall not be liable for breakable items and valuables including but not limited to money, watches, securities, jewelry, computers and any electronic materials, mobile phones and other precious objects which must be hand-carried by the passenger on and off the ship; are the full responsibility of the passenger at all time. CDP is not responsible for loss of or damage to such items. Passenger is responsible for subscribing to insurance to cover luggage.

8- Independent contractors/Limit of liability

The passenger agrees that Compagnie du Ponant acts as agent and/or trustee for any person, ground and maritime agents and subcontractors, who provide any service forming, or in connection with, any part of the cruise. Transportation services to the port of departure, transfers to the ship, including, as applicable, hotel room and restaurant bookings or guided tours, are performed by independent suppliers who are not employees of Compagnie du Ponant. In this respect, Compagnie du Ponant acts only as an agent and shall not be held liable for said services or for the acts or omissions of sub-contractors or other contractors.

Compagnie du Ponant shall not be held liable for bodily injury to, or death of passengers, or for loss of, or damage to luggage or other personal belongings, unless it is proved that the carrier has infringed statutory obligations or that it or one of its employees or agents has committed gross negligence. However, in the event the liability of Compagnie du Ponant is incurred, such liability is limited (details available upon request).

Compagnie du Ponant shall in any case not be liable for failure of an improper performance when the same is due to or caused by the fault of the passenger; the unforeseeable or unavoidable fault or a third party unconnected with the provision of any services to be provided under the contract; unusual and unforeseeable circumstances beyond the control of Compagnie du Ponant; an event of "Force Majeure" such as a war, threat of war, riots, civil commotion, acts of God, terrorist activities, natural and nuclear disaster, fire, technical problems with transport, closure of ports, strikes and any industrial action, or any other event beyond the control of Compagnie du Ponant. During expedition programs, all persons who participate in any expedition activity accept responsibility for making their own determinations as to the suitability of the activity and for their own safety, conduct and well-being and agree to participate solely at their own risk. Attending information briefings is mandatory. Thus informed, each participant assumes the risk associated with these activities and will hold Compagnie du Ponant, its officers, directors, crew and expedition team members as well as hiking leaders harmless from and defend them against any and all liability, actions, suits, claims and demands which could arise from any of the Compagnie du Ponant's activities and from any loss or injury which may sustain as a result of participation in any of these activities.

Compagnie du Ponant and the Owners and operators of the vessels identified in this brochure shall be entitled to claim the benefit of whichever law, regulation, treaty or doctrine provides the greatest protection.

9- Validity of the brochure

From May 12th, 2015 and until further notice, this brochure cancels and replaces all information contained in all brochures COMPAGNIE DU PONANT or any other leaflet.

10- Rates

The prices given at the time of booking are based on economic conditions known on May 12th 2015 for the period from May 15th 2015 (TBC) and until further notice. These conditions are, amongst others, the cost of transport and fuel, relevant dues and taxes for the proposed operation (port taxes, embarkation and disembarkation taxes, entrance costs to tourist sites), currency exchange rates relevant to the pricing of these programs. Compagnie du Ponant reserves the right within the legal limits of French Law to vary the prices if necessary.

All variation of the cost of transport, fuel, taxes, dues and visa costs will be passed on within the voyage cost. Additionally, any surcharge levied will be increased to include an amount to cover agent's commission. Any change in fare cannot be imposed less than 60 days prior to departure. For the cruise-only rate, daily surcharge, if any, will be calculated based on:

$$S = \frac{\text{fuel variation} * x \text{ daily consumption} **}{\text{Ship capacity} ***}$$

(*): MGO FOB Rotterdam 0,1% in US\$

(**): 20t

(***): 200

11- Travel Insurance

Passengers shall be responsible for subscribing to cancellation/luggage/assistance/repatriation/medical insurance(s).

12- Claims

No claims can be made against CDP without a written and detailed statement of the claim by registered letter with acknowledgment of receipt requested within the following time periods: a) For luggage: in the event of obvious damages or loss: at the time of disembarkation at the latest. In the event of hidden damages or loss: within seven (7) days of disembarkation or of the date when disembarkation should have taken place; b) For passengers in the case of bodily harm and damages other than to luggage: within thirty (30) days from the date when the passenger disembarked or should have disembarked. Failure to comply with these provisions shall mean that the passenger is deemed to have safely disembarked without harm and collected his or her luggage without damage thereto.

13- Jurisdiction

These terms & conditions are subject to and interpreted according to International regulations and concern the transportation of passengers and their luggage from the time of boarding the ship to the moment of disembarking, as well as at ports of departure, destination, or stopover. CDP shall incur no liability outside this period of time. Without prejudice to required legal regulations, any actions related either to the interpretation, or execution of this agreement shall be brought before the competent courts of Marseille-France.

CDP is not responsible for omissions, printing and/or presentation errors and reserves the right to make corrections as required.

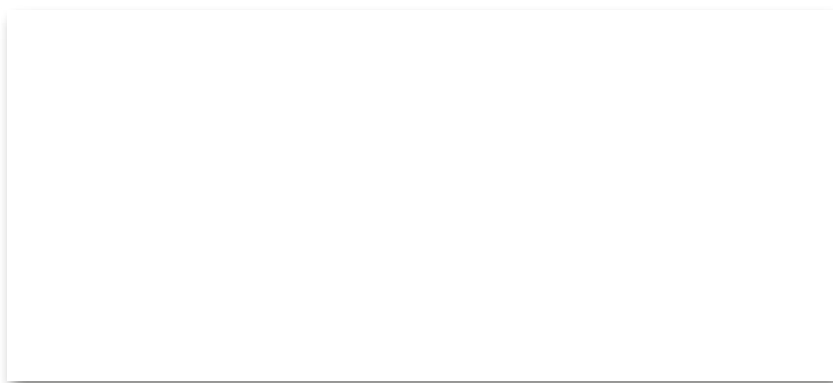
INSURANCE



PONANT is creating a new insurance and multi-risk assistance contract. Enjoy worry-free travel with our exclusive **Ponant 5* Insurance** policy, arranged through our partner, APRIL, a specialist in high-end travel insurance. This insurance will cover you on all our itineraries without exception, and for the full duration of your cruise. APRIL has been our partner for nearly 15 years and has plenty of experience in the type of problems that may arise. We are therefore offering to be the single and unique point of contact for booking your flights and cruises and also for managing insurance cover throughout your trip. The guarantees provided are subject to a surcharge of **5% incl. taxes on the total cost of your travel if your cruise is ranges from 0 € to 25 000 € / person or 7% incl. taxes on the total cost of your travel if your cruise is ranges from 25 001€ to 50 000 € / person**. The policy must be taken out on the day your cruise is purchased. Our sales staff are at your disposal to answer all your questions. To be eligible you must live in mainland France including Corsica, the French overseas departments, Andorra and Monaco, or in an EU country or in Switzerland.

BENEFITS	Maximum amounts / person, incl. tax
TRIP CANCELLATION	
<ul style="list-style-type: none"> Illness (including relapse from previous illness or injury), accident, death of the insured, of a family member or an insured accompanying party: deductible 5% of the cancellation cost with a minimum of 75 € / person. Attack or natural disaster occurring at destination point Other justified reasons ↳ Deductible 	50 000 € maximum / person 100 000 € maximum / event (75 000 € / event if the amount of the trip is less than 25 000 € / person) 10% of the cancellation cost with a minimum of 75 € / person
MISSED CONNECTION	
<ul style="list-style-type: none"> Travel expenses up to the next stop-over OR Early return 	50% of the trip cost with a maximum of 1 500 € / person Return ticket + taxi fare
BAGGAGE	
<ul style="list-style-type: none"> Theft, total or partial destruction, loss during conveyance by a shipping company ↳ Deductible Late delivery > 24h 	3 049 € incl. tax / person 30 € / file Fixed sum of 400 € incl. tax / person
ASSISTANCE TO PERSONS IN CASE OF ILLNESS OR INJURY DURING TRAVEL	
<ul style="list-style-type: none"> Transportation / Repatriation Return travel of family members or insured accompanying party OR Presence during hospitalization <ul style="list-style-type: none"> - Transportation - Accommodations Prolonged stay of accompanying party in the event of hospitalization Accompanying children under 18 years old Travel continuation Reimbursement of medical expenses abroad and advance of hospitalization costs abroad <ul style="list-style-type: none"> - Europe and Mediterranean countries - Rest of the world ↳ Deductible for medical expenses 	Actual costs Return ticket + taxi fare Round trip ticket + taxi fare 80 € / night (maximum 10 nights) 80 € / night (maximum 4 nights) Hostess or round trip ticket Additional travel expenses 75 000 € / person 152 500 € / person 30 € / person / event
ASSISTANCE PROVIDED IN CASE OF DEATH	
<ul style="list-style-type: none"> Return travel of family members or one or two of the insured accompanying party Anticipated return in the event of death of a family member, the person in charge of child care or the professional replacement 	Return ticket + taxi fare Return ticket + taxi fare
TRAVEL ASSISTANCE	
<ul style="list-style-type: none"> Advance of bail abroad Coverage of lawyers' fees abroad Early return in case of damages at home Assistance in case of damages at home <ul style="list-style-type: none"> - Conservatory measures - Accommodations Assistance and advance of funds in case of theft, loss OR destruction of identification papers or payment means 	15 300 € / person 3 100 € / person Return ticket + taxi fare 80 € 50 € / night (maximum 2 nights) 2 300 € / person
CIVIL LIABILITY	
<ul style="list-style-type: none"> All bodily injury and property damage Including property damage ↳ Deductible 	500 000 € incl. tax / person 75 000 € incl. tax / person 75 € / claim
TRIP INTERRUPTION	
<ul style="list-style-type: none"> Cost of trip interruption, due to: <ul style="list-style-type: none"> - Hospitalization or death of close relations - Damages at home Compensation travel, following: <ul style="list-style-type: none"> - Medical repatriation of the insured 	Prorata temporis (excluding transportation) Initial cost of insured trip
TRAVEL ACCIDENT	
<ul style="list-style-type: none"> Death Disability 	15 245 € incl. tax / person 15 245 € incl. tax / person 150 000 € incl. tax / event





408 Avenue du Prado - 13008 Marseille - France

www.ponant.com

Licence 013060005 - Member of SNAV, ATOUT FRANCE and APST